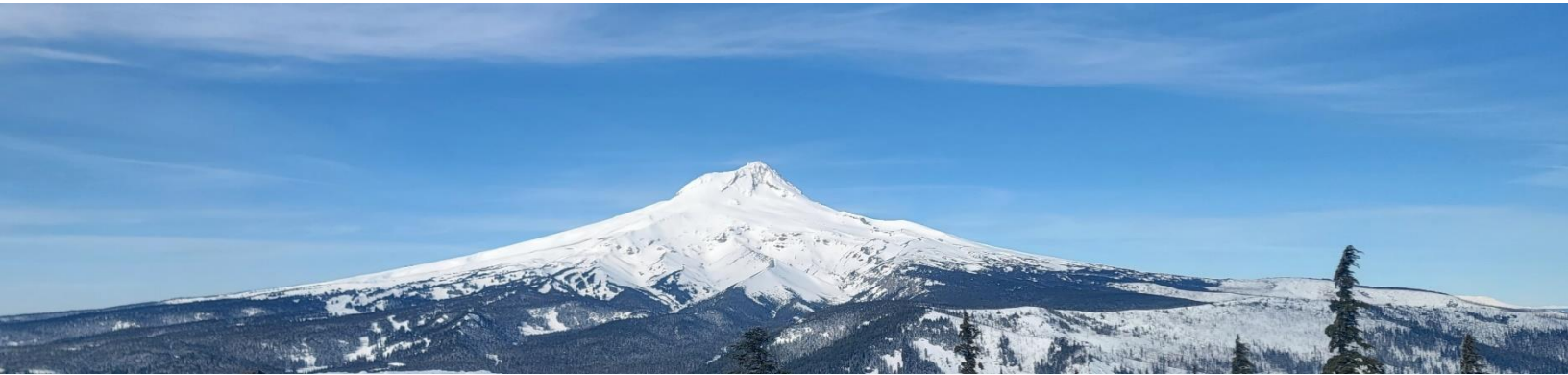




Mt. Hood National Forest

SNOW CONDITIONS REPORT

MARCH 8, 2024



DO YOU HAVE YOUR SNO-PARK PASS?

In order to park at a sno-park, you need to purchase a pass at a local vendor or online through [OR Dept. of Transportation](#).

Sno-Park passes are not available on-site.

CHECK WINTER CONDITIONS!

Winter weather and road conditions vary greatly with elevation and can change quickly. Before you leave home, check the [mountain weather forecast](#) and [Tripcheck.com webcams](#) for road conditions.

Check the current [NW Avalanche Forecast](#) to learn about avalanche dangers in the Cascades!

Ski Areas Conditions:

- [Timberline Lodge](#)
- [Mt. Hood Meadows](#)
- [Mt. Hood Skibowl](#)
- [Teacup Nordic](#)

WINTER GEAR CHECKLIST

Always carry these items in your vehicle when visiting the forest in winter:

- Tire chains
- Shovel
- Flashlight
- Extra layers
- Forest map
- Water & food

RECREATION REMINDER



Mt. Hood winter recreation areas are very popular. Please plan ahead before heading out!

- Check Tripcheck.com for road conditions and traffic alerts. Use I-84 & mass transit when possible.
- **DO NOT PARK ON HIGHWAYS!** This is unsafe and illegal. You may get ticketed and towed.
- Have a back-up plan if your intended site is full.
- Take home all your trash and broken sleds.

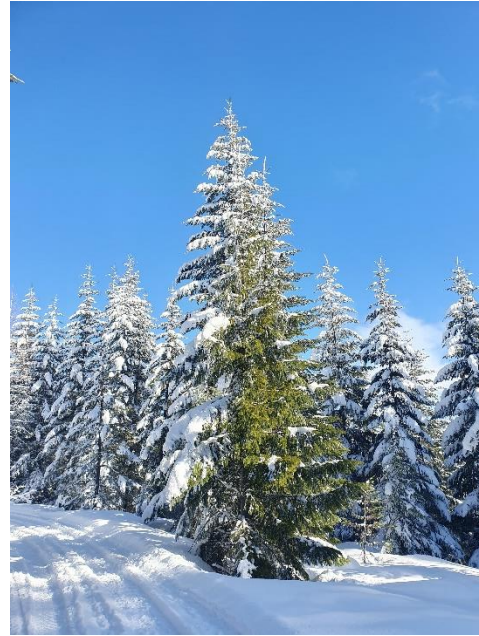
MT. HOOD SNO-PARKS IN THIS REPORT:

General Overview	2
Tamanawas Falls TH.....	2
Little John Sno-Park.....	3
Pocket Creek Sno-Park.....	3
Bennett Pass Sno-Park	4
White River Sno-Park (East/West).....	4
Barlow Pass Sno-Park	5
Trillium Sno-Park.....	5
Snow Bunny Sno-Park	6
Mirror Lake Sno-Park	6
Frog Lake Sno-Park	7
Skyline Sno-Park.....	7
Billy Bob Sno-Park	8
Tilly Jane Sno-Park	8



General Overview

The sun has made a welcome appearance at the Mt. Hood National Forest this week! All our Sno-Park sites have received lots of snow over recent weeks to refresh trail and sledding hill conditions for recreation. Friday remains sunny and then over the weekend warmer temperatures will bring the snow level up to 3,000-4,000 feet. This means that our lower elevation sites will receive rain or mixed precipitation while our higher sites will have more snow. Some precipitation will start on Saturday and Sunday, but most will fall on Monday and Tuesday. There is fresh snow at each of the winter recreation sites, so be sure to get out there and enjoy!



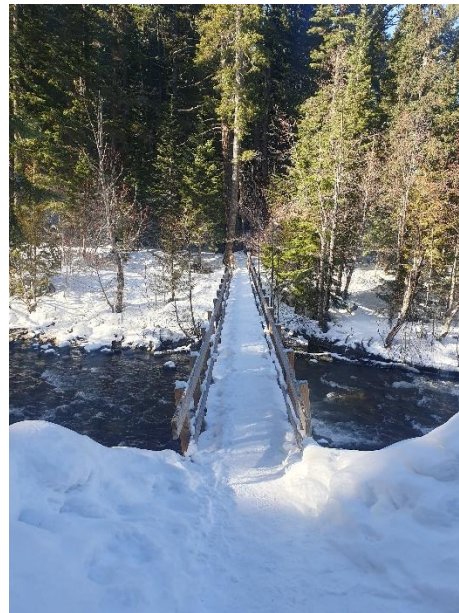
Tamanawas Falls TH **OR Hwy 35: 3,000ft.**

Amount of Snow: 31" (3/7)

General Park Conditions:

Tamanawas Falls has a refreshed snowpack! Over the weekend, warmer temperatures will bring some mixed precipitation and rain, mostly Sunday (3/10) through Tuesday (3/12). The trail is compacted with snow and some ice, while off-trail has deeper snow. This trail has consistently seen heavy use this winter, so expect busy trails. A section of this trail has been washed out and rerouted over running water as a result of flooding that occurred back in December, so use caution while crossing. In the winter, Tamanawas Falls Trail isn't regularly maintained, the conditions are much more challenging, and constantly changing. Please use this trail with extreme caution. Traction devices are recommended.

As of Thursday (3/7), the lot was plowed.





Little John Sno - Park
OR Hwy 35: 3,700ft.

Amount of Snow: 28" (2/29)

General Park Conditions:

Little John currently has wonderful sledding hill conditions! Get out there on Friday and Saturday before some rain and mixed precipitation fall Sunday (3/10) through Tuesday (3/12). The hill has full coverage again so get out and enjoy the fresh snow!

As of Thursday (3/7), the lot is plowed. Poor asphalt conditions here mean it will be plowed less frequently.



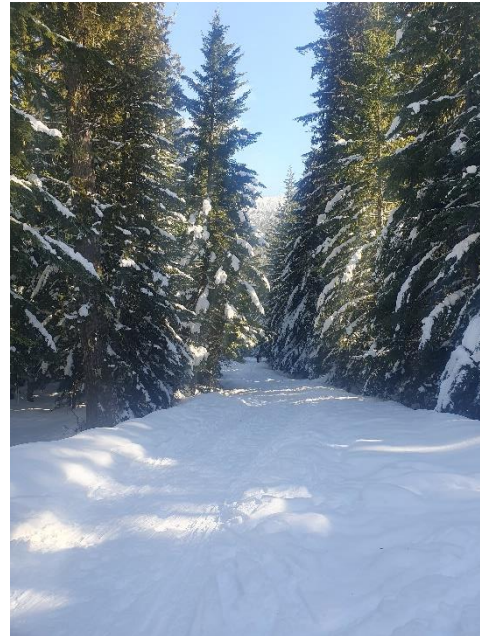
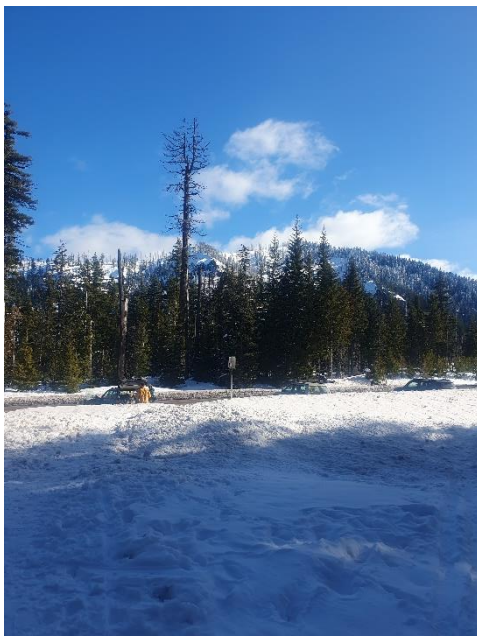
Pocket Creek Sno - Park
OR Hwy 35: 3800ft.

Amount of Snow: 59" (3/7)

General Park Conditions:

Pocket Creek has seen moderate to high usage over the last week with skiers taking advantage of the snow. Pocket Creek has lots of soft snow with compacted ski and snowshoe trails. There are powdery conditions on the trails, so be sure to get out there this weekend! With high temperatures in the mid 30s, Pocket Creek is forecast to get mixed precipitation falling mostly Sunday (3/10) through Tuesday (3/12).

As of Thursday (3/7) the lot was plowed. The Clark Creek ski bridge on the Meadows Tie Trail is [closed due to structural deterioration](#). Please review ski trail maps posted on site and plan around this closure.





Bennett Pass Sno - Park
OR Hwy 35; 4700ft.

Amount of Snow: 91" (3/7)

General Park Conditions:

Bennett Pass has received loads of fresh snow over the past few weeks adding lots of powder to the snowpack. Conditions on trail are great for snowshoeing, skiing, or snowmobiling! In the forecast, Friday is sunny followed by a storm moving in and bringing up to a foot of new snow at Bennett, mostly on Tuesday (3/12). Make sure to get out and enjoy the fresh snow!

As of Thursday (3/7), the lot was partially plowed. Wind often creates pockets of deep drifted snow during and after storms. Bring a shovel and be prepared for difficult driving conditions. Snowmobile users are reminded that only Bennett Pass to Pocket Creek are multi-use, please refrain from using the ski trails. If traveling towards Camp Windy, please remember that snowmobiles are prohibited within wilderness areas.



White River Sno - Park (East/West)
OR Hwy 35; 4200ft.

Amount of Snow: 83" (3/7)

General Park Conditions:

White River saw high usage last weekend and is expected to be busy again this weekend! This site has received tons of fresh snow in recent weeks making conditions sublime. Snow is expected to fall again at White River with up to a foot forecast Sunday (3/10) through Tuesday (3/12). The parking lot can have deep snow so be prepared when parking here and anticipate that this site will be busy this weekend. Be sure to get out and enjoy the snow this weekend!

As of Thursday (3/7) both lots were plowed. Many popular areas along the river have exposed flowing water. Please use caution and keep an eye on the kids if recreating near the river.





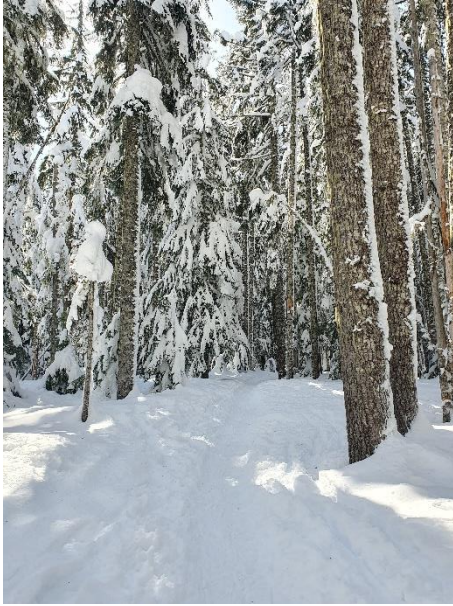
Barlow Pass Sno - Park
OR Hwy 35; 4150ft.

Amount of Snow: 65" (3/7)

General Park Conditions:

Barlow Pass has received lots of fresh snow over recent weeks so expect a busy weekend as people explore the snow! Sunny weather will continue Friday (3/8) followed by some snow and mixed precipitation moving in Sunday (3/10) through Tuesday (3/12) with most of the snow falling on Tuesday. Conditions are great for snowshoeing or cross-country skiing!

As of Thursday (3/7), the lot was partially plowed. Barlow Rd (3530) is closed to vehicles for the season.



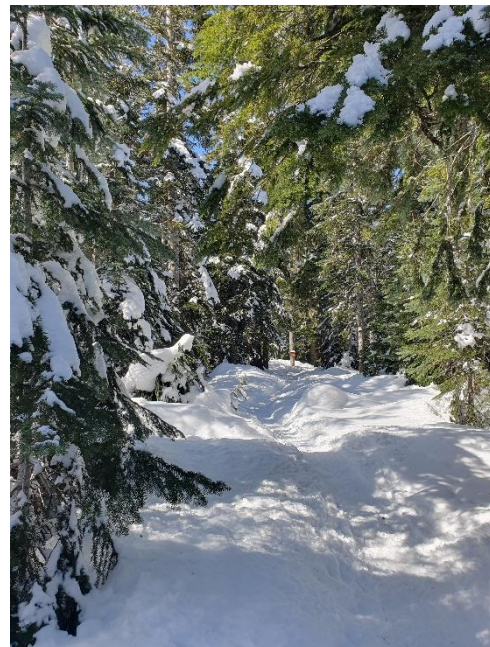
Frog Lake Sno - Park
US 26; 3950ft.

Amount of Snow: 57" (3/7)

General Park Conditions:

Frog Lake has lots of fresh snow from the last few weeks so expect a busy weekend as recreators get out on the fresh snow! Friday will be sunny followed by snow and mixed precipitation moving in Sunday (3/10) through Tuesday (3/12). It will be a great weekend for snowshoeing, cross-country skiing, or snowmobiling on the trails!

As of Thursday (3/7), the parking lot was plowed.





Skyline Sno - Park

US 26; 3600ft.

Amount of Snow: 47" (3/7)

General Park Conditions:

Skyline has received a bunch of fresh snow over the past weeks and so expect a busy parking lot and high usage this weekend as people get out in the fresh snow! Friday will be clear followed by some mixed precipitation falling Sunday (3/10) through Tuesday (3/12). It will be a great weekend to get out there on the trails! Keep in mind that NF-42 is a groomed snowmobile trail and is closed for motor vehicles over 50" wide.

As of Thursday (3/7), the parking lot was partially plowed.



Snow Bunny Sno-Park

US 26; 3800ft.

Amount of Snow: ~27" (3/8)

General Park Conditions:

The Snow Bunny area still has plenty of snow to play in! The snowshoes and ski trails in this area should have good conditions, as well as the sledding hill. Sledding is prohibited on the trails but can be enjoyed in the surrounding area.

As of Friday morning, (3/08) the lot was a combination of ice and pavement. Overnight parking is located along the southern guardrail.





Mirror Lake Sno-Park

US 26; 3600ft.

Amount of Snow: ~24" (3/8)

General Park Conditions:

Mirror Lake is expected to be great for snowshoe/ski use with the amount of snow that has stuck around since the last storm. Expect deep snow at the lake and on the way to Tom, Dick, and Harry. **Hiking without snowshoes, skis, or traction devices is NOT recommended on this trail.** This is because post hole-ing is possible along the trail and lake without snowshoes or skis, or trail conditions may be slippery on the boot pack trail. Always plan ahead and prepare for the conditions!

As of Friday morning (3/8), the lot was a combination of pavement and ice. Overnight parking is not permitted.



Trillium Lake Sno-Park

US 26; 3600ft.

Amount of Snow: ~28" (3/8)

General Park Conditions:

The amount of snow is suitable for snowshoe/ski /snowmobile use. **Remember to keep ski and snowshoe tracks separate from each other**, per the trailhead signage. This decreases user conflict and keep all users safe! Hiking without snowshoes or skis is not recommended on this trail. Many hikers find that they post-hole on the trail as the snow gets deeper and conditions warm. There are no bathrooms in this lot, so stop somewhere along the way.

As of Friday morning, (3/8) the lot was a combination of snow and ice. Overnight parking is only permitted along the northern edge of the parking lot.





Tilly Jane Sno - Park
Cloud Cap Road; 3800ft.

Amount of Snow: 53" (3/6)

General Park Conditions:

Tilly Jane has seen moderate usage with lots of fresh snow in recent weeks. With temperatures hovering around freezing, this site will see snow and mixed precipitation in the next storm from Sunday (3/10) through Tuesday (3/12) with most precipitation falling on Tuesday. Snow conditions are currently great for getting out on the trails! Please use caution while in the backcountry and consider avalanche information from the Northwest Avalanche Center before heading out.

As of Wednesday (3/6), the lot was plowed.



Billy Bob Sno - Park
OR 44/Dufur Valley RD; 3500ft.

Amount of Snow: 30" (3/8)

General Park Conditions:

Billy Bob has seen lots of new snow over the past few weeks! Many of the surrounding trails have been groomed recently. In the forecast, temperatures in the upper 30s will bring mixed precipitation to this site on Sunday (3/10) through Tuesday (3/12). Conditions are great for getting out on the trails! Please keep in mind that Hwy 44 is a groomed snowmobile route and is closed to motor vehicles over 50" wide between US-35 and Billy Bob.

As of Friday (3/8), the lot was plowed.

