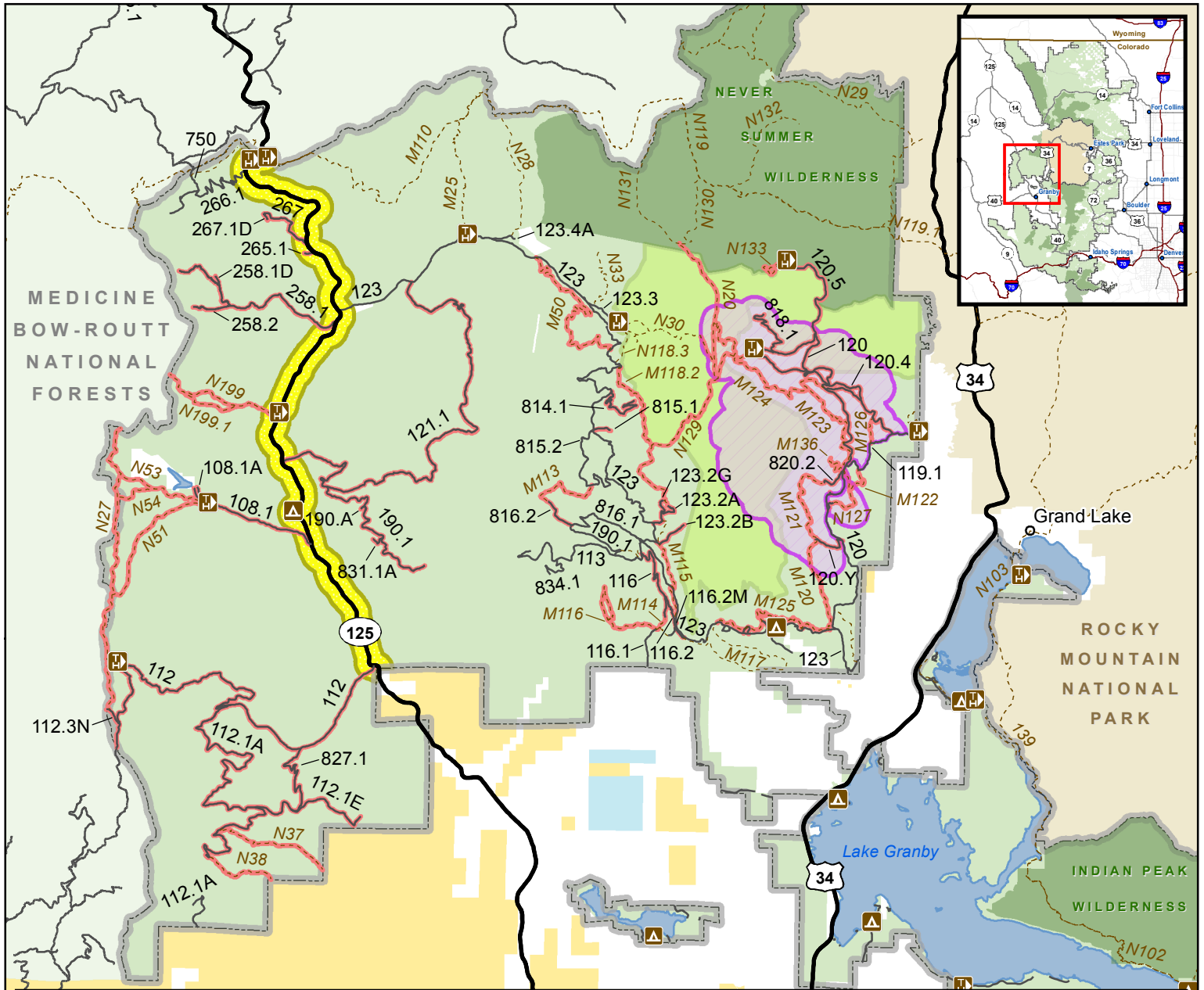




**Exhibit A (Applies to National Forest System Lands Only)**  
**# ARP-SRD-2021-12**



**Legend**

- Arapaho-Roosevelt National Forests
- Area Closed - See Map Exhibit B
- Closed to Camping
- Wilderness
- Bowen Gulch Protection Area
- Arapaho National Recreation Area

**Land Ownership**

- US Forest Service
- Private/Non Federal
- State, County, City
- National Park Service
- Bureau of Land Management

**Roads and Trails**

- State or US Highway
- National Forest System Road
- Trail
- Closed to All Uses

dmuise 9/16/2021

**Disclaimer:** This map is for display purposes only and not for navigation. The Forest Service reserves the right to correct, update, modify or replace GIS products without notification. The Forest Service uses the most current and complete data it has available. GIS data and product accuracy may vary. For more information, contact the Arapaho-Roosevelt National Forests and Pawnee National Grassland Supervisor's Office 2150 Centre Ave Ft Collins, CO 80526 970-295-6600

