



File Code: 1920

Date: December 16, 2020

Dear Planning Partner:

The Sumter National Forest Land and Resource Management Plan (Forest Plan) was revised in January 2004. The 2012 Planning Rule, issued by the Forest Service in April 2012, allows the USDA Forest Service to make non-substantive corrections or adjustments to the revised Forest Plan using a process called “Administrative Changes.” “Administrative Changes” as defined by 36 CFR 219.13(c) in the 2012 Planning Rule are “...any change to a plan that is not a plan amendment or revision. Administrative Changes include corrections of clerical errors to any part of the plan, conformance of the plan to new statutory or regulatory requirements, or other content in the plan (§219.7(f)).”

Administrative Change #2 -Acquired Lands

“Administrative Change #2 -Acquired Lands” applies to the Enoree, Long Cane, and Andrew Pickens Ranger Districts of the Sumter National Forest. Since the Forest Plan was revised, the Sumter National Forest has acquired thousands of acres of land with no specific forest plan direction as to how these tracts will be managed. These tracts have not been assigned management prescriptions due to the following reasons: 1) lands acquired since the 2004 Forest Plan analysis was completed; 2) lands “missed” during the Forest Plan analysis or historic gaps/data entry lags in the Forest Service’s Automated Lands Program; or 3) possible tract boundary errors due to spatial data technology.

Therefore, we are proposing to make an Administrative Change to the Sumter Forest Plan to make this mapping change to incorporate those tracts of acquired land that are surrounded or nearly surrounded by a single management prescription. The attached information documents the tracts that have been acquired, and their applicable management prescription is listed.

This Administrative Change makes the mapping changes needed to incorporate these tracts of acquired land that are surrounded or nearly surrounded by a single management prescription into the Forest Plan for the Sumter National Forest. The 2004 Sumter Forest Plan and associated updates are online:

<https://www.fs.usda.gov/detailfull/scnfs/landmanagement/planning/?cid=STELPRDB5261413&width=full>. The 2004 Sumter Forest Plan (pp. 2-30 to 2-31) states the following:

- **Goal 36** Acquire non-federal lands through purchase, donation or exchange to improve management effectiveness, support specific resource management objectives, and enhance public benefits.
- **Standard FW-99** When compatible, manage future acquired lands according to the management prescription direction within which the newly acquired lands are located.



The ability to implement this standard is authorized by 36 CFR 254.3(f), which states:

“Lands acquired by exchange that are located within areas having an administrative designation established through the land management planning process shall automatically become part of the area within which they are located, without further action by the Forest Service, and shall be managed in accordance with the laws, rules, regulations, and land and resource management plan applicable to such area.”

“Administrative Change #2 – Acquired Lands” is effective upon signature. The change will be posted online. Administrative changes are not subject to the objection process (36 CFR 219.50).

This administrative change will remain in effect until the 2004 Sumter Forest Plan is revised, at which time the direction from this amendment will be incorporated into the new Forest Plan.

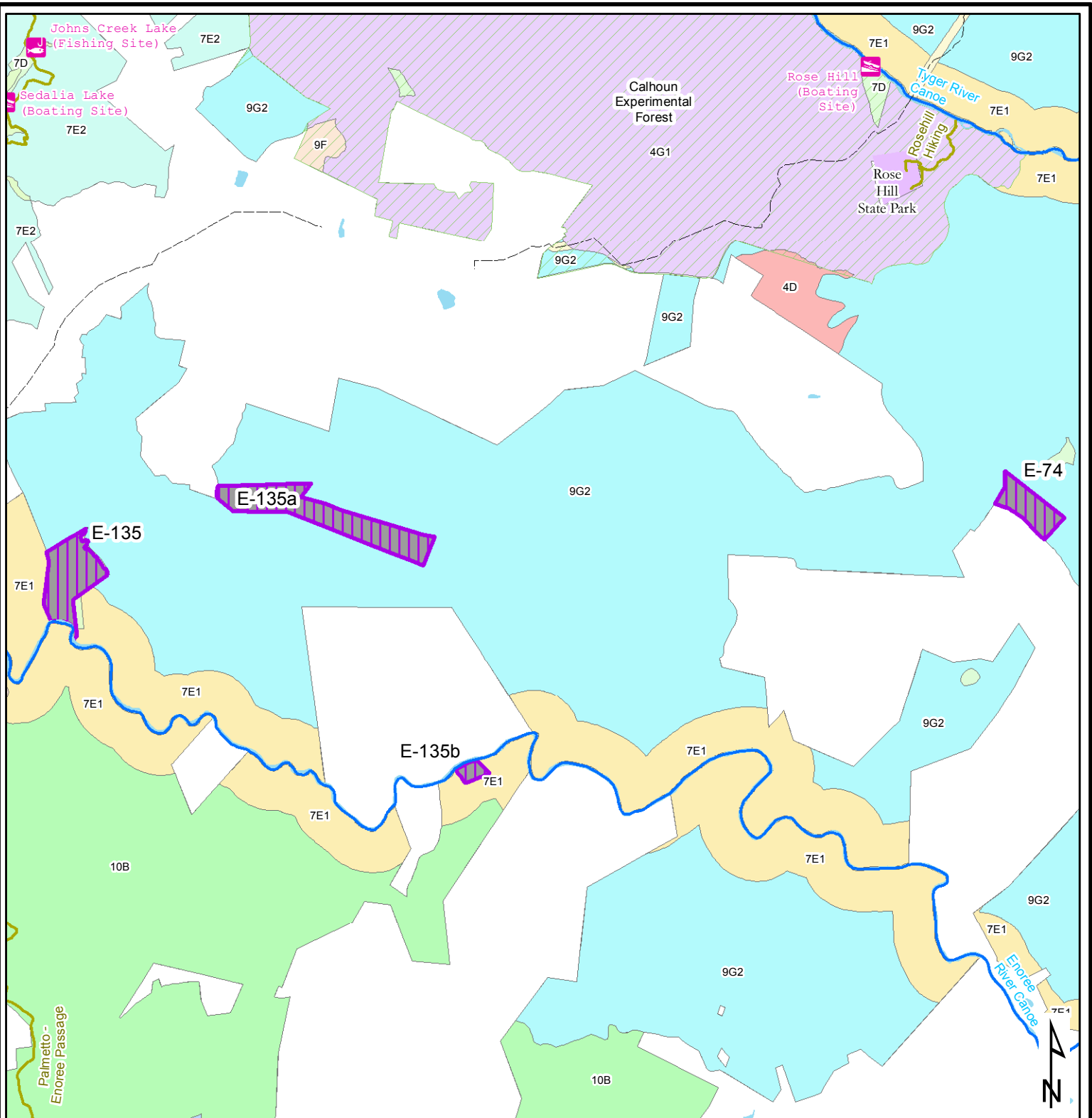
Sincerely,

/s/ John Richard Lint
JOHN RICHARD LINT
Forest Supervisor

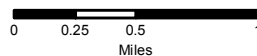
Enclosures: Maps of Acquired Tracts
List of Assigned Forest Plan Direction

TRACT NUMBER	SURVEY ACRES	Acquistion Year	Management Prescription	Acres	Management Prescription	Acres	Management Prescription	Acres	District	map page	Comments
E-135*	78	2001	9G2 Restoration of Upland Hardwoods	78	N/A	0	N/A	0	Enoree	1	
E-135a	112	2001	9G2 Restoration of Upland Hardwoods	112	N/A	0	N/A	0	Enoree	1	
E-135b	13		7E1 Dispersed Recreation Area	13	N/A	0	N/A	0	Enoree	1	
Gilchirst		2020	9G2 Restoration of Upland Hardwoods	8	N/A	0	N/A	0	Enoree	2	
E-258b	526		7E1 Dispersed Recreation Area	108	10B High quality forest products	13	N/A	0	Enoree	6	Only northern portion of tract (above Indian Creek) is missing;
E-297	76	1989	10B High quality forest products	76	N/A	0	N/A	0	Enoree	4	
E-297a	87	1989	10B High quality forest products	84	5C Designated Utility Corridors	9	N/A	0	Enoree	4	
E-34*	1412	2004	10B High quality forest products	1351	5C Designated Utility Corridors	61	N/A	0	Enoree	4	
E-41	48	2013	10B High quality forest products	48	N/A	0	N/A	0	Enoree	4	
E-43*	727	2004	10B High quality forest products	859	N/A	0	N/A	0	Enoree	6	
E-43a*	398	2004	10B High quality forest products	392	N/A	0	N/A	0	Enoree	7	Henderson Island;
E-43b*	537	2004	10B High quality forest products	529	N/A	0	N/A	0	Enoree	7	Henderson Island;
E-43c*	278	2004	10B High quality forest products	270	N/A	0	N/A	0	Enoree	7	
E-43d*	54	2004	10B High quality forest products	54	N/A	0	N/A	0	Enoree	7	
E-43e	193	2004	10B High quality forest products	193	N/A	0	N/A	0	Enoree	7	
E-43f	145	2004	10B High quality forest products	145	N/A	0	N/A	0	Enoree	7	
E-43g	9	2004	10B High quality forest products	9	N/A	0	N/A	0	Enoree	7	
E-43h	38	2004	10B High quality forest products	39	N/A	0	N/A	0	Enoree	7	
E-50a*	210	2014	9G2 Restoration of Upland Hardwoods	207	N/A	0	N/A	0	Enoree	3	Delta;
E-50b	238	2014	9G2 Restoration of Upland Hardwoods	238	N/A	0	N/A	0	Enoree	3	Delta;
E-50c	338	2014	9G2 Restoration of Upland Hardwoods	338	N/A	0	N/A	0	Enoree	3	Delta;
E-50d*	529	2014	9G2 Restoration of Upland Hardwoods	526	5C Designated Utility Corridors	3	N/A	0	Enoree	3	Delta; Railroad corridor;
E-73*	149	2005	10B High quality forest products	137	5C Designated Utility Corridors	12	N/A	0	Enoree	4	Railroad corridor;
E-73a	2	2015	7E1 Dispersed Recreation Area	2	N/A	0	N/A	0	Enoree	4	Railroad corridor
E-74	39	2013	9G2 Restoration of Upland Hardwoods	39	N/A	0	N/A	0	Enoree	1	
L-25	840	2005	9G2 Restoration of Upland Hardwoods	760	5C Designated Utility Corridors	27	4D Botanical Area	54	Long Cane	4	Turkey-Stevens Creek
L-25a	780	2009	9G2 Restoration of Upland Hardwoods	722	4D Botanical Area	42	5C Designated Utility Corridors	16	Long Cane	4	Turkey-Stevens Creek
L-26	432	2007	10B High quality forest products	389	5C Designated Utility Corridors	46	N/A	0	Long Cane	3	Typo- should have been listed in the 2004 Sumter Forest Plan
Price		2020	10B High quality forest products	179	N/A	0	N/A	0	Long Cane	3	Same management prescription for two tracts
L-411	116	1997	10B High quality forest products	116	N/A	0	N/A	0	Long Cane	5	Typo- should have been listed in the 2004 Sumter Forest Plan
L-411a	73	1997	10B High quality forest products	73	N/A	0	N/A	0	Long Cane	3	Typo- should have been listed in the 2004 Sumter Forest Plan
L-83	85	2008	Management	85	N/A	0	N/A	0	Long Cane	1	
Mathis		2020	10B High quality forest products	143	N/A	0	N/A	0	Long Cane	5	
L-91	100	2013	10B High quality forest products	100	N/A	0	N/A	0	Long Cane	5	
L-91a	366	2013	10B High quality forest products	366	N/A	0	N/A	0	Long Cane	5	

TRACT NUMBER	SURVEY ACRES	Acquisition Year	Management Prescription	Acres	Management Prescription	Acres	Management Prescription	Acres	District	map page	Comments
L-91b	387	2013	10B High quality forest products	383	5C Designated Utility Corridors	4	N/A	0	Long Cane	5	
L-91c	194	2013	10B High quality forest products	194	N/A	0	N/A	0	Long Cane	5	
L-91d	53	2013	10B High quality forest products	53	N/A	0	N/A	0	Long Cane	3	
L-91e	84	2013	10B High quality forest products	84	N/A	0	N/A	0	Long Cane	2	
L-91f	121	2013	10B High quality forest products	121	N/A	0	N/A	0	Long Cane	2	
L-91g	272	2013	10B High quality forest products	272	N/A	0	N/A	0	Long Cane	2	
P-35	49	2004	7E2 Dispersed Recreation with Vegetation Management	49	N/A	0	N/A	0	Pickens	1	
P-39a	0.4	2015	2A3 Chattooga w&s river corridor - Recreational	0.4	N/A	0	N/A	0	Pickens	1	
P-69	0.3	2016	2A3 Chattooga w&s river corridor - Recreational	0.3	N/A	0	N/A	0	Pickens	1	
P-92	22	2001	8A1 Mix of Successional Forest Habitats	22	N/A	0	N/A	0	Pickens	2	
P-97	84	2004	7E2 Dispersed Recreation with Vegetation Management	84	N/A	0	N/A	0	Pickens	2	Long Creek dove field.
P-98	160	2001	7E2 Dispersed Recreation with Vegetation Management	160	N/A	0	N/A	0	Pickens	2	Long Creek dove field.
<p>*Based on review of the monitoring of the Scenic Integrity Objective (SIO); monitoring of scenery and recreation settings (See Monitoring question 13 in the Sumter monitoring reports posted on FMS public website) and Forest Plan direction for aesthetic/scenery management (Sumter Forest Plan, Chapter 2 Forest-wide plan direction pgs 2-26 to 2-27), and embedded Management prescription 11 Riparian Corridor (Sumter Forest Plan, Chapter 3 Management Prescriptions, pages 3-39 to3-44) the ID team felt that we did not need to assign several newly acquired tracts to managment prescription 7E1 Dispersed Recreation Area to protect the viewsheds along the Enoree, Tyger and Broad Rivers.</p>											



	Tract		7E1
	4D		7E2
	4G1		9F
	5C		9G2
	6C		10B
	7D		



USFS Tracts Without Management Area or Prescription Designation

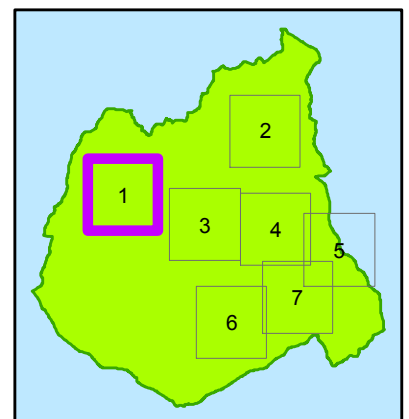
Enoree Ranger District
Page 1

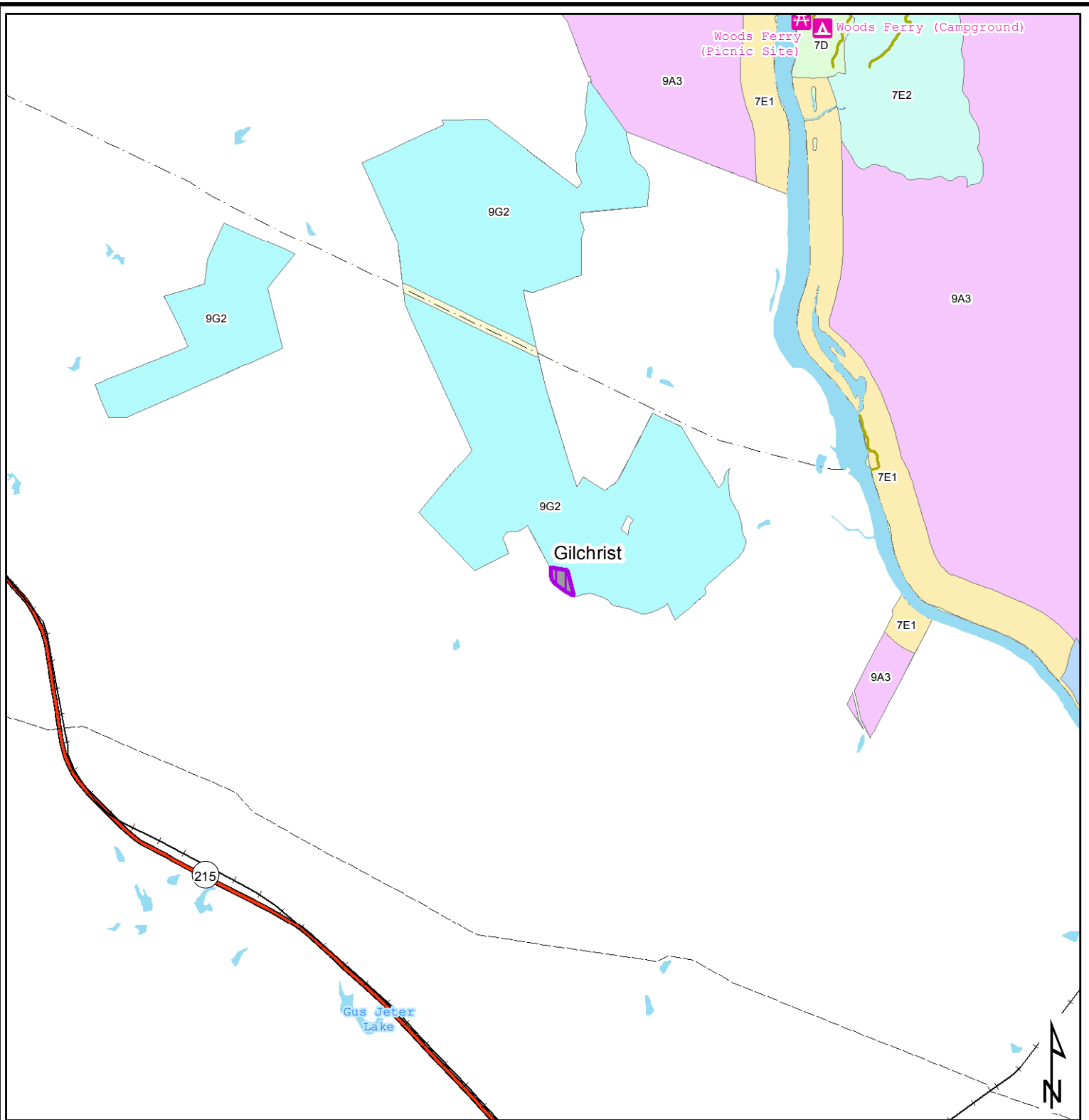
Coordinate System: NAD 1983 UTM Zone 17N

Disclaimer: The USDA Forest Service makes no warranty, expressed or implied, regarding the data displayed on the map, and reserves the right to correct, update, modify, or replace this information without notification.

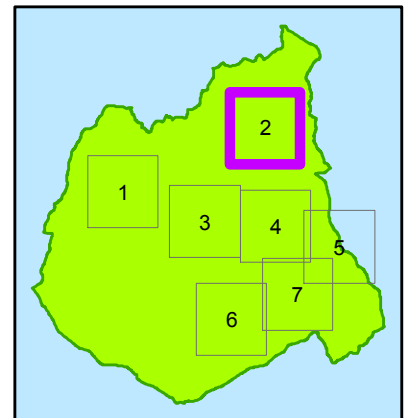


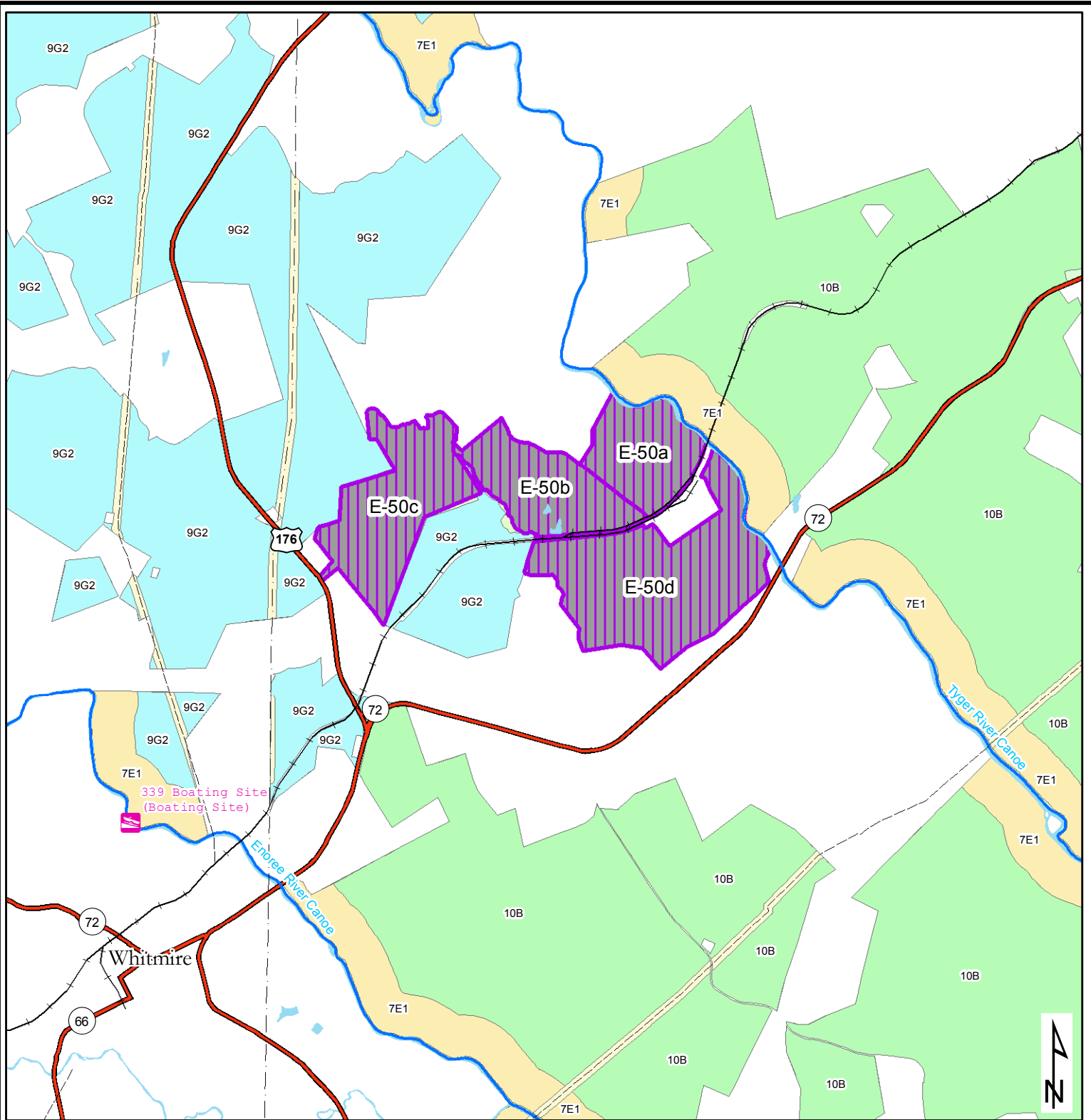
gholden, 11/2/2020 11:33:44 AM





	Tract		7E1
	5C		7E2
	6C		9A3
	7D		9G2






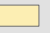
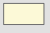
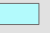
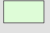

0 0.25 0.5 1
Miles

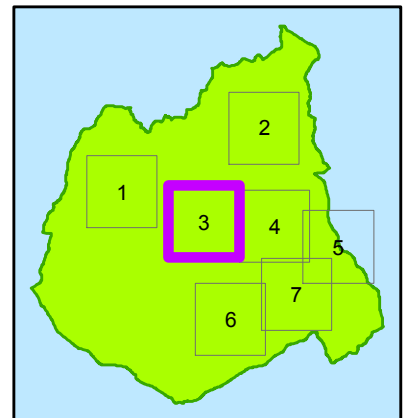
USFS Tracts Without Management Area or Prescription Designation

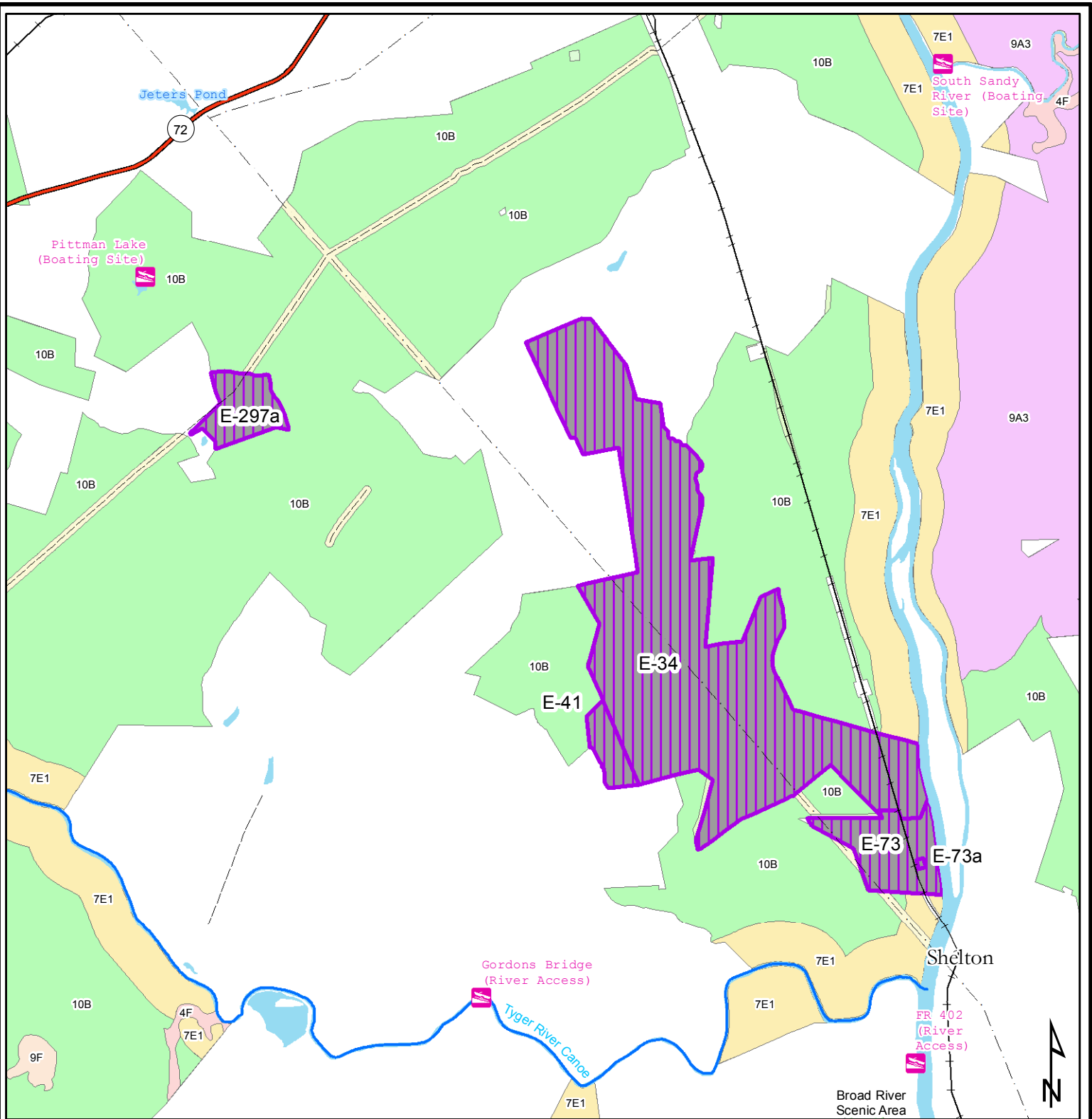
**Enoree Ranger District
Page 3**

Coordinate System: NAD 1983 UTM Zone 17N

Disclaimer: The USDA Forest Service makes no warranty, expressed or implied, regarding the data displayed on the map, and reserves the right to correct, update, modify, or replace this information without notification.

	Tract		7E1
	5C		9G2
	7D		10B





	Tract		7E1
	4F		9A3
	5C		9F
	7D		10B

USFS Tracts Without Management Area or Prescription Designation

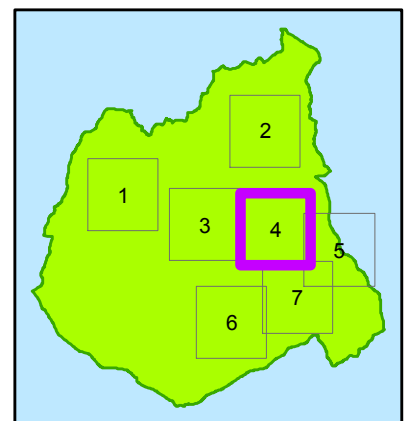
Enoree Ranger District
Page 4

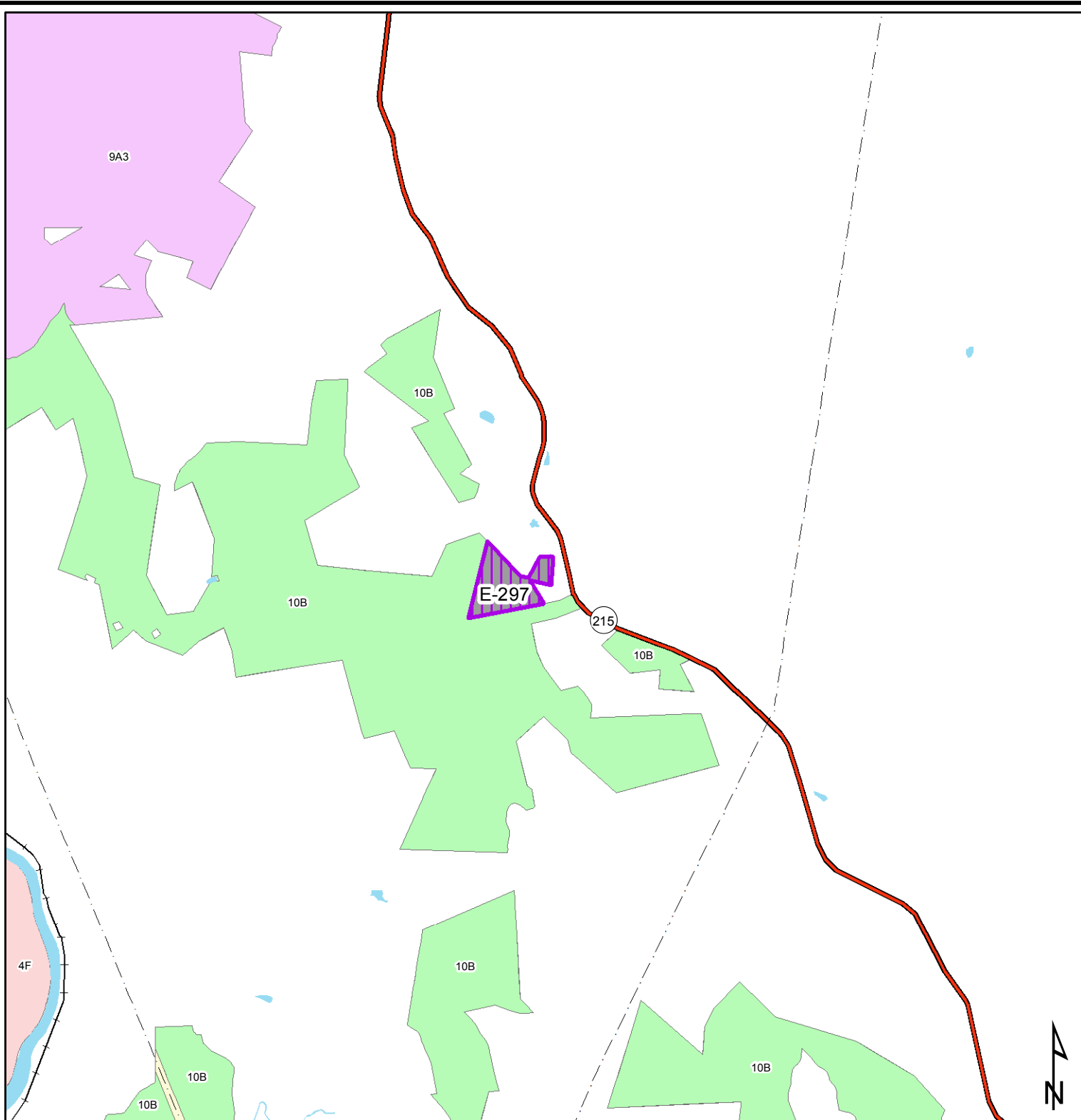
Coordinate System: NAD 1983 UTM Zone 17N

Disclaimer: The USDA Forest Service makes no warranty, expressed or implied, regarding the data displayed on the map, and reserves the right to correct, update, modify, or replace this information without notification.



gholden, 11/2/2020 11:34:07 AM





0 0.25 0.5 1
Miles

USFS Tracts Without Management Area or Prescription Designation

**Enoree Ranger District
Page 5**

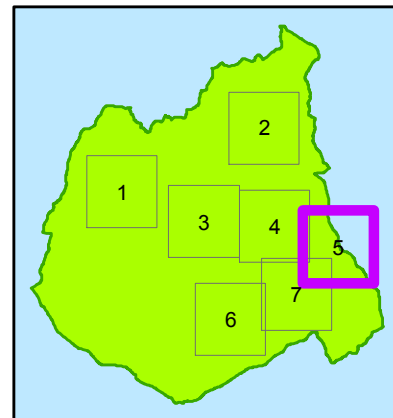
Coordinate System: NAD 1983 UTM Zone 17N

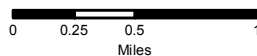
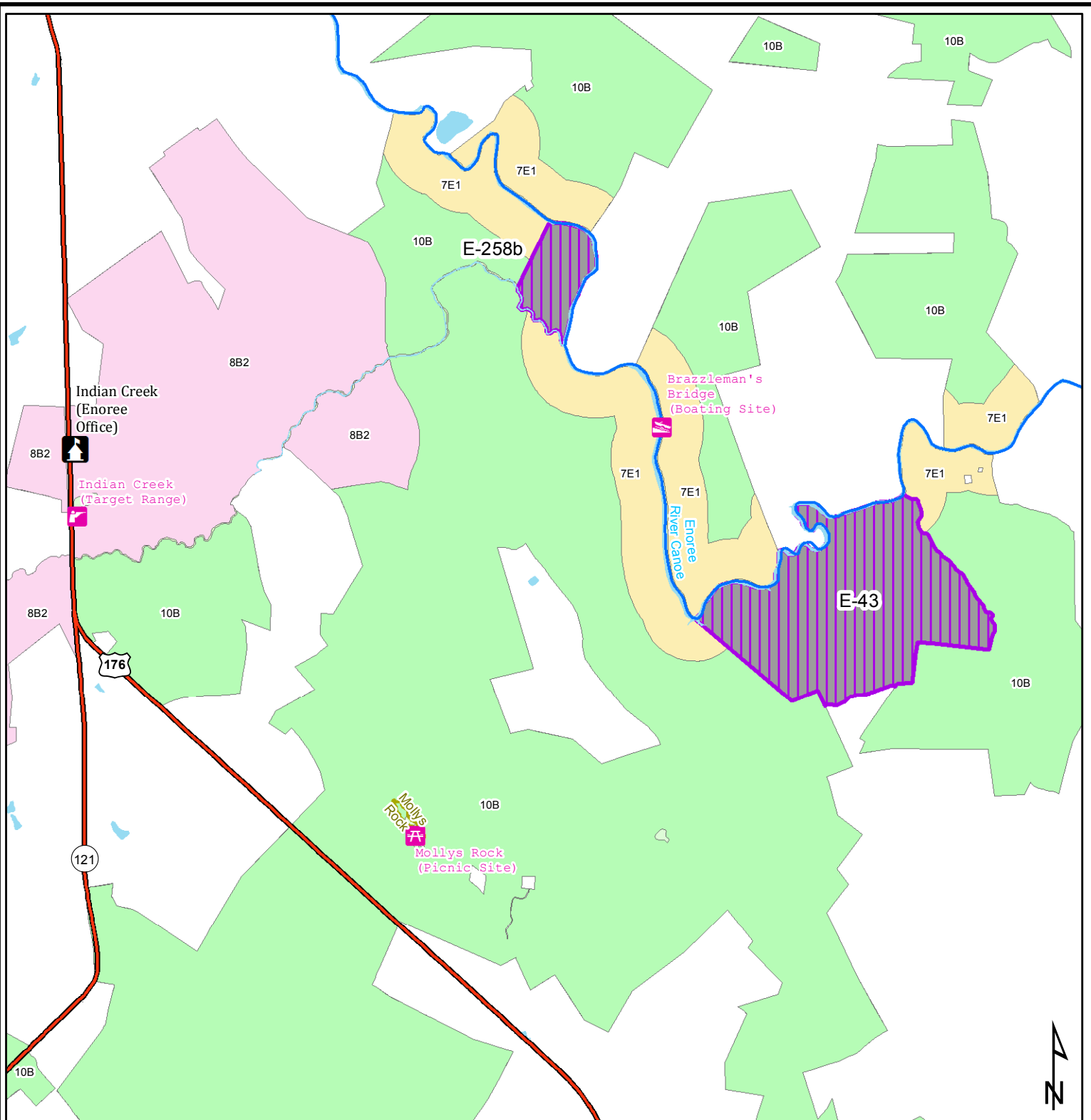
Disclaimer: The USDA Forest Service makes no warranty, expressed or implied, regarding the data displayed on the map, and reserves the right to correct, update, modify, or replace this information without notification.

	Tract		9A3
	4F		10B
	5C		



gholden, 11/2/2020 11:34:13 AM



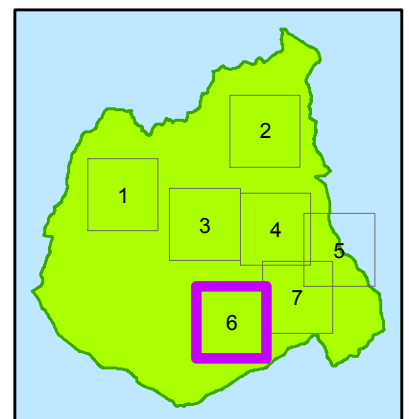
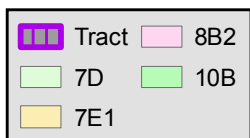


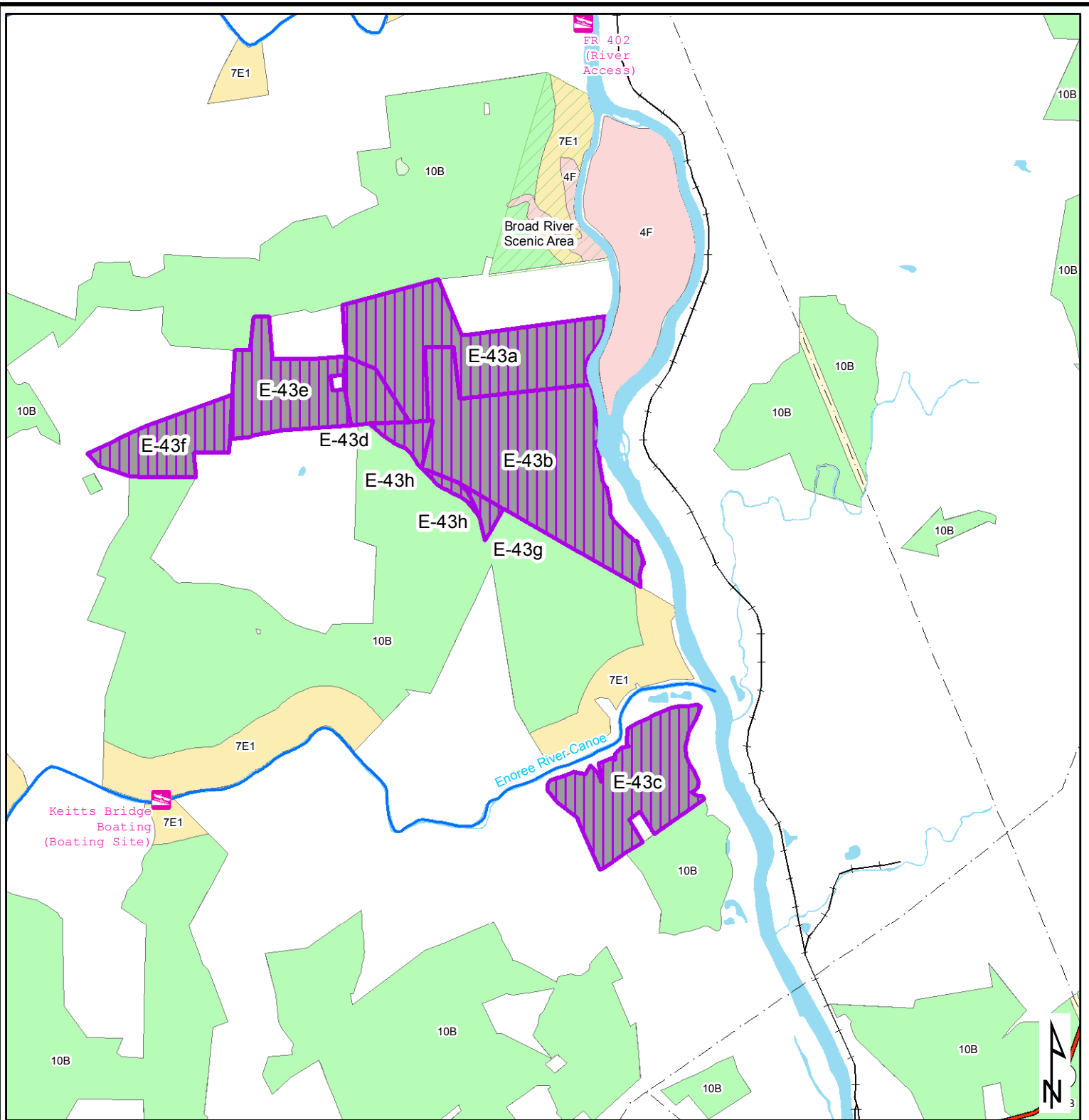
USFS Tracts Without Management Area or Prescription Designation

**Enoree Ranger District
Page 6**

Coordinate System: NAD 1983 UTM Zone 17N

Disclaimer: The USDA Forest Service makes no warranty, expressed or implied, regarding the data displayed on the map, and reserves the right to correct, update, modify, or replace this information without notification.



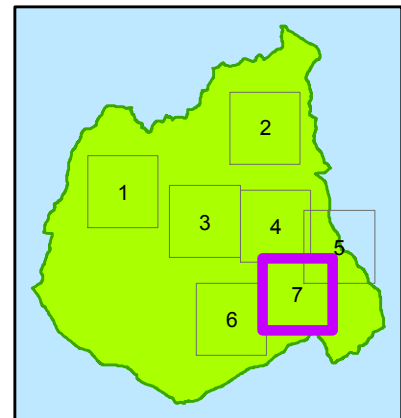
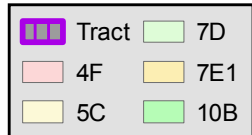


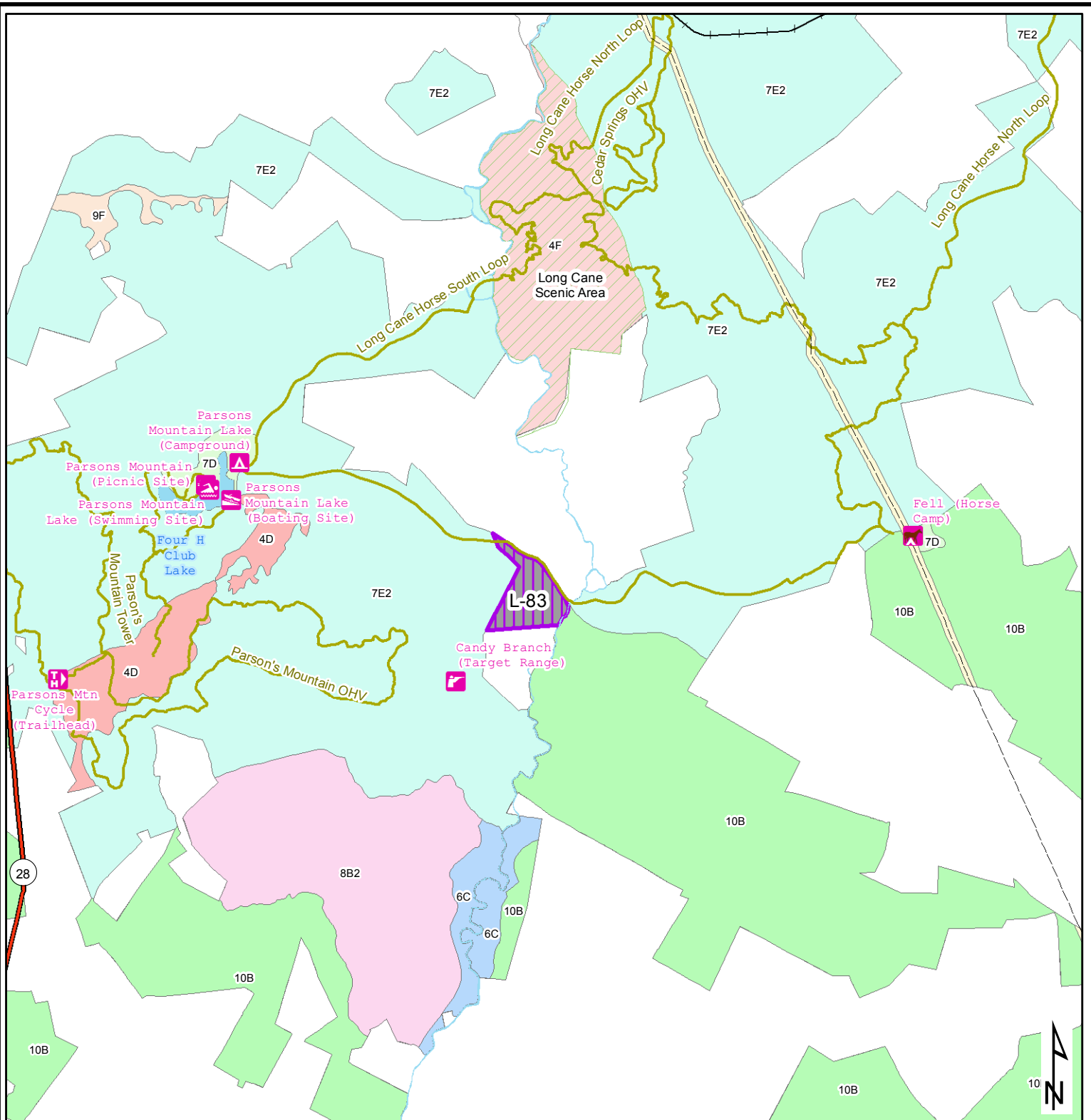
**USFS Tracts Without
Management Area or Prescription
Designation**

**Enoree Ranger District
Page 7**

Coordinate System: NAD 1983 UTM Zone 17N

Disclaimer: The USDA Forest Service makes no warranty, expressed or implied, regarding the data displayed on the map, and reserves the right to correct, update, modify, or replace this information without notification.





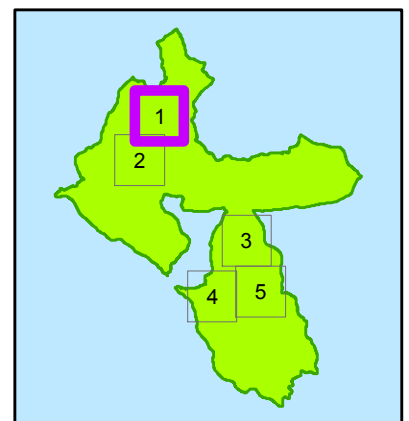
	Tract		7D
	4D		7E2
	4F		8B2
	5C		9F
	6C		10B

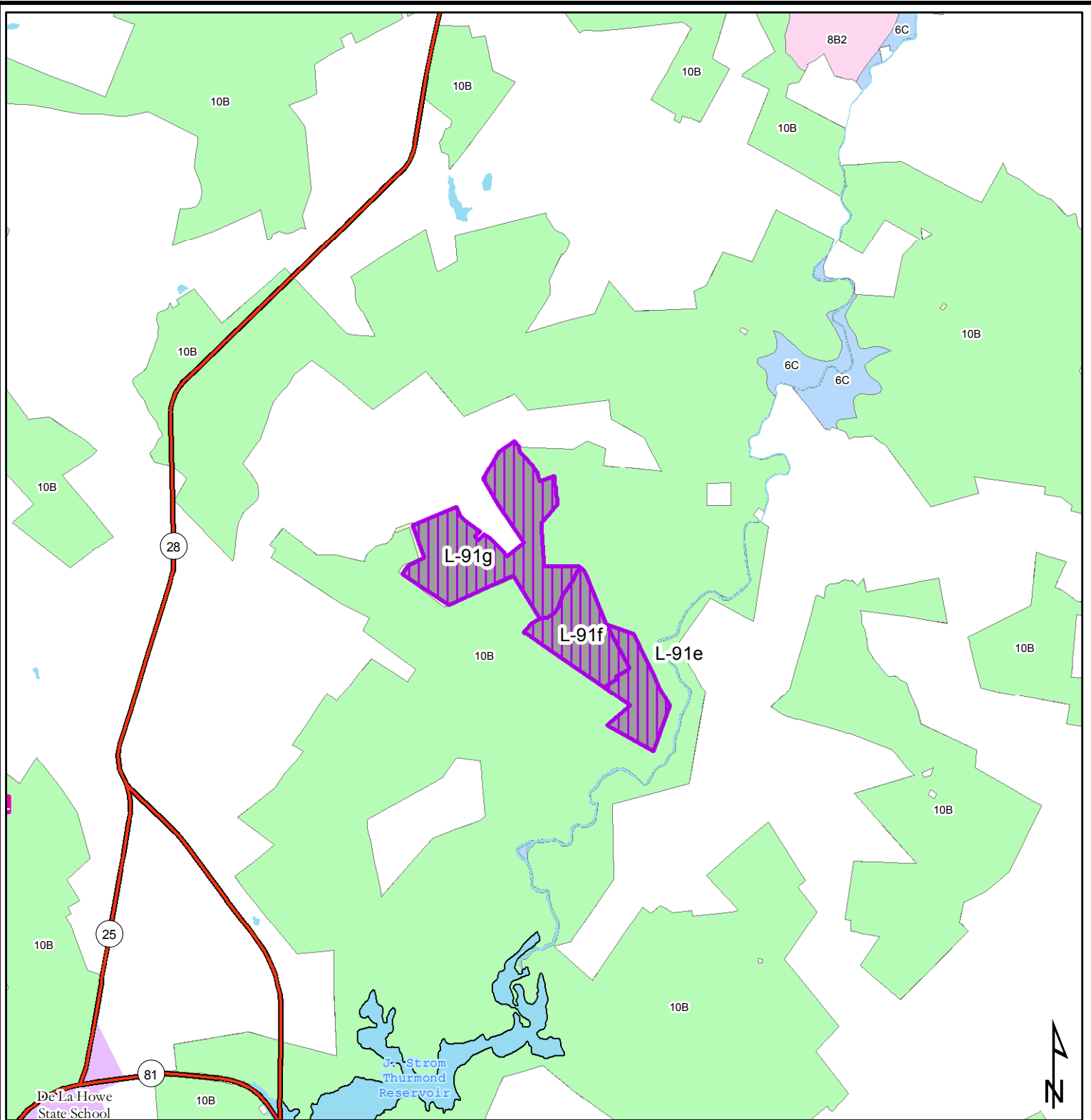
USFS Tracts Without Management Area or Prescription Designation

Long Cane Ranger District
Page 1

Coordinate System: NAD 1983 UTM Zone 17N

Disclaimer: The USDA Forest Service makes no warranty, expressed or implied, regarding the data displayed on the map, and reserves the right to correct, update, modify, or replace this information without notification.





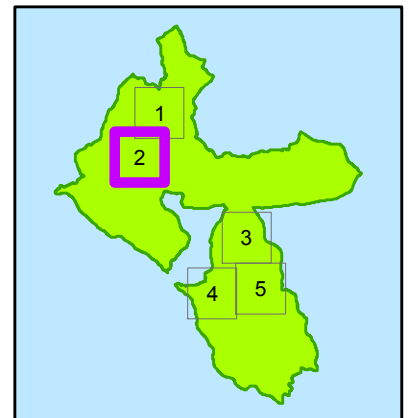
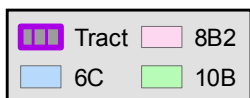
0 0.25 0.5 1
Miles

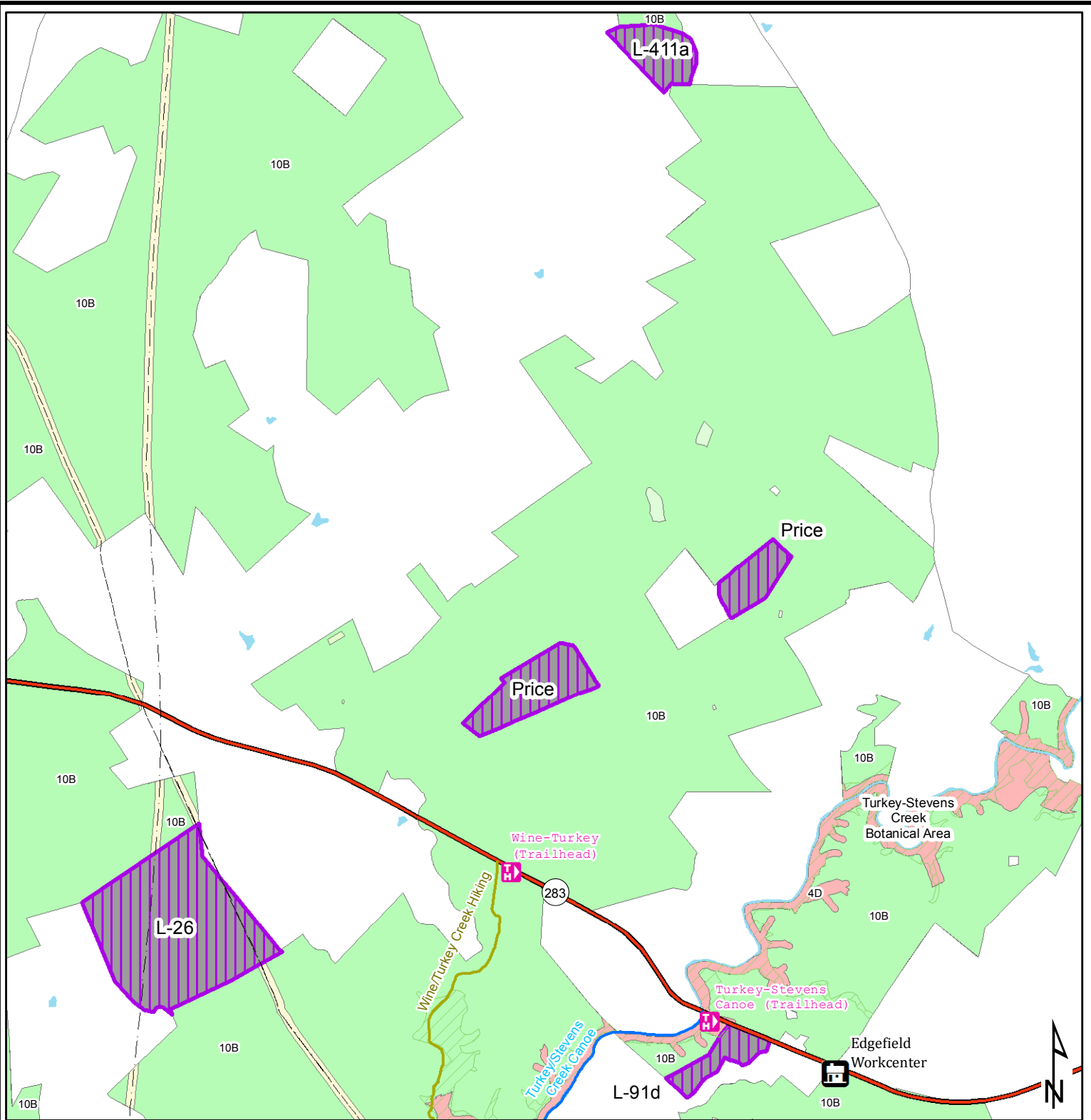
**USFS Tracts Without
Management Area or Prescription
Designation**

**Long Cane Ranger District
Page 2**

Coordinate System: NAD 1983 UTM Zone 17N

Disclaimer: The USDA Forest Service makes no warranty, expressed or implied, regarding the data displayed on the map, and reserves the right to correct, update, modify, or replace this information without notification.



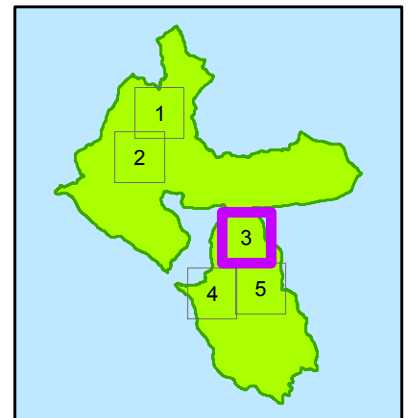
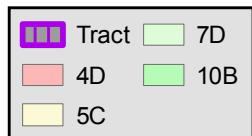


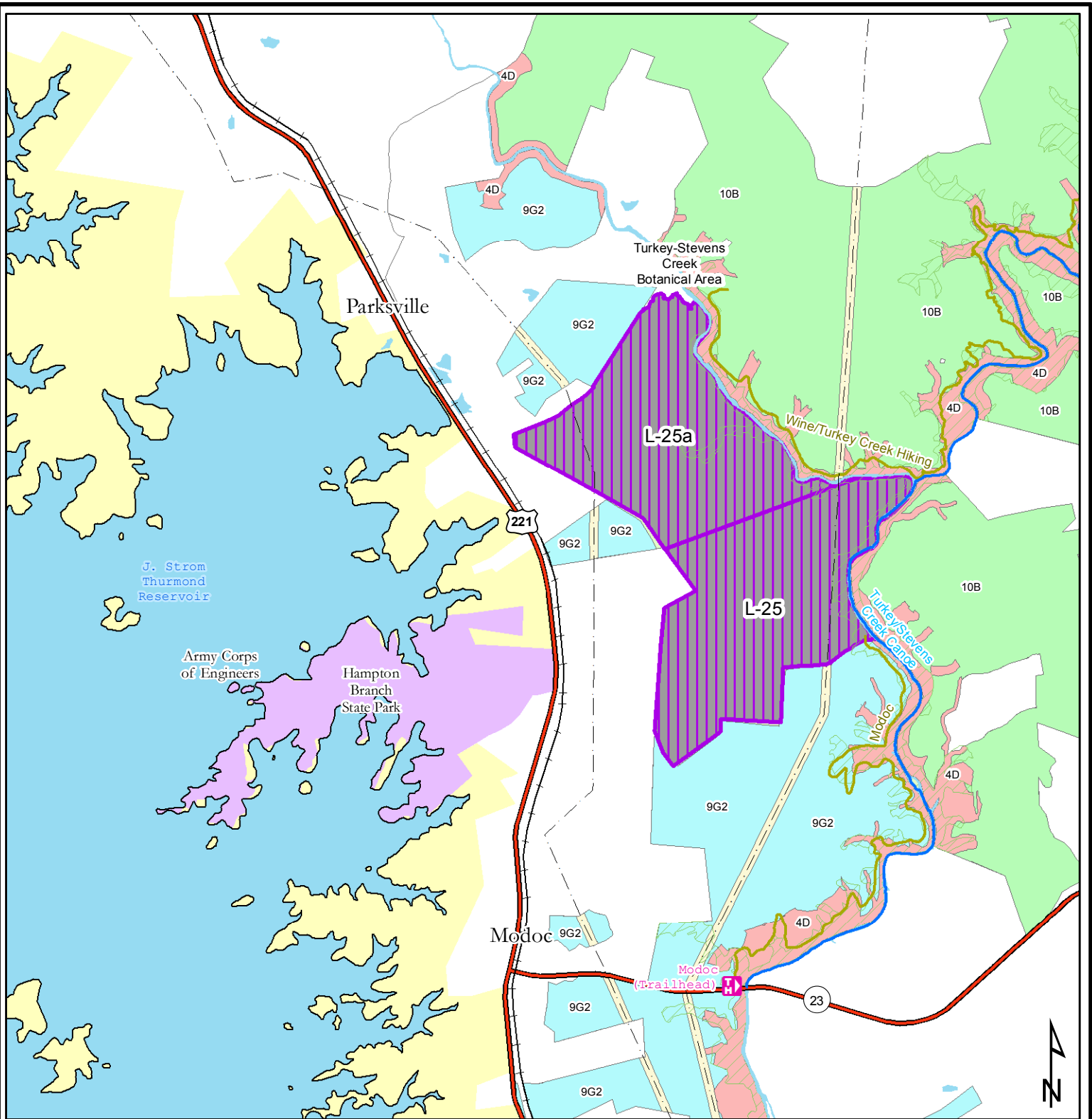
**USFS Tracts Without
Management Area or Prescription
Designation**

**Long Cane Ranger District
Page 3**

Coordinate System: NAD 1983 UTM Zone 17N

Disclaimer: The USDA Forest Service makes no warranty, expressed or implied, regarding the data displayed on the map, and reserves the right to correct, update, modify, or replace this information without notification.






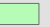



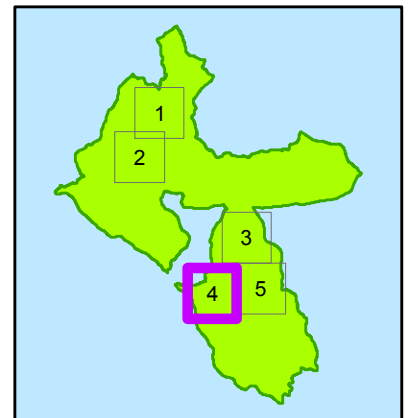
USFS Tracts Without Management Area or Prescription Designation

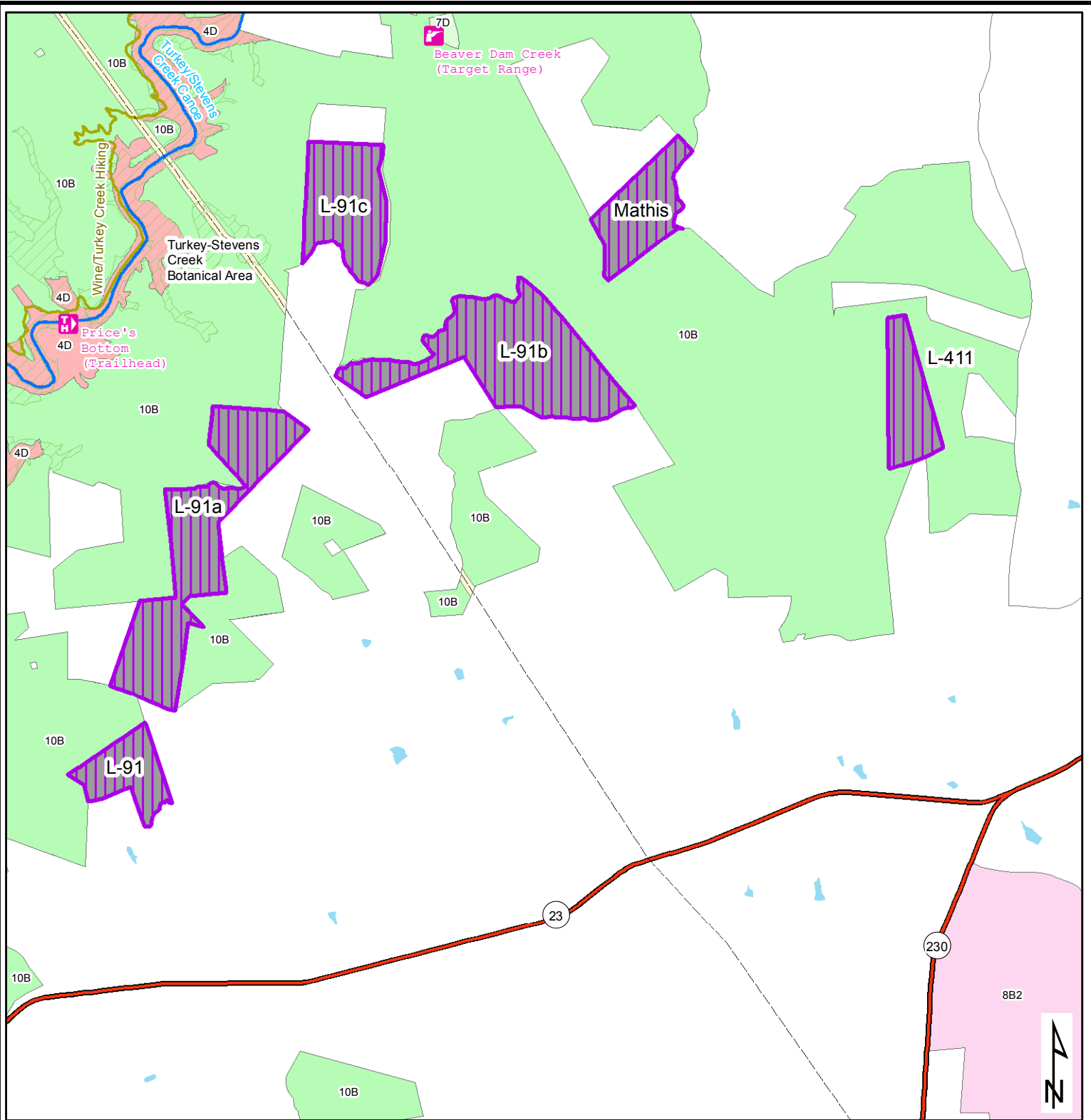
Long Cane Ranger District
Page 4

Coordinate System: NAD 1983 UTM Zone 17N

Disclaimer: The USDA Forest Service makes no warranty, expressed or implied, regarding the data displayed on the map, and reserves the right to correct, update, modify, or replace this information without notification.

	Tract		9G2
	4D		10B
	5C		





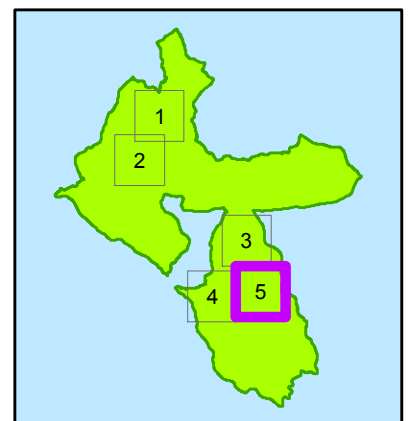
**USFS Tracts Without
Management Area or Prescription
Designation**

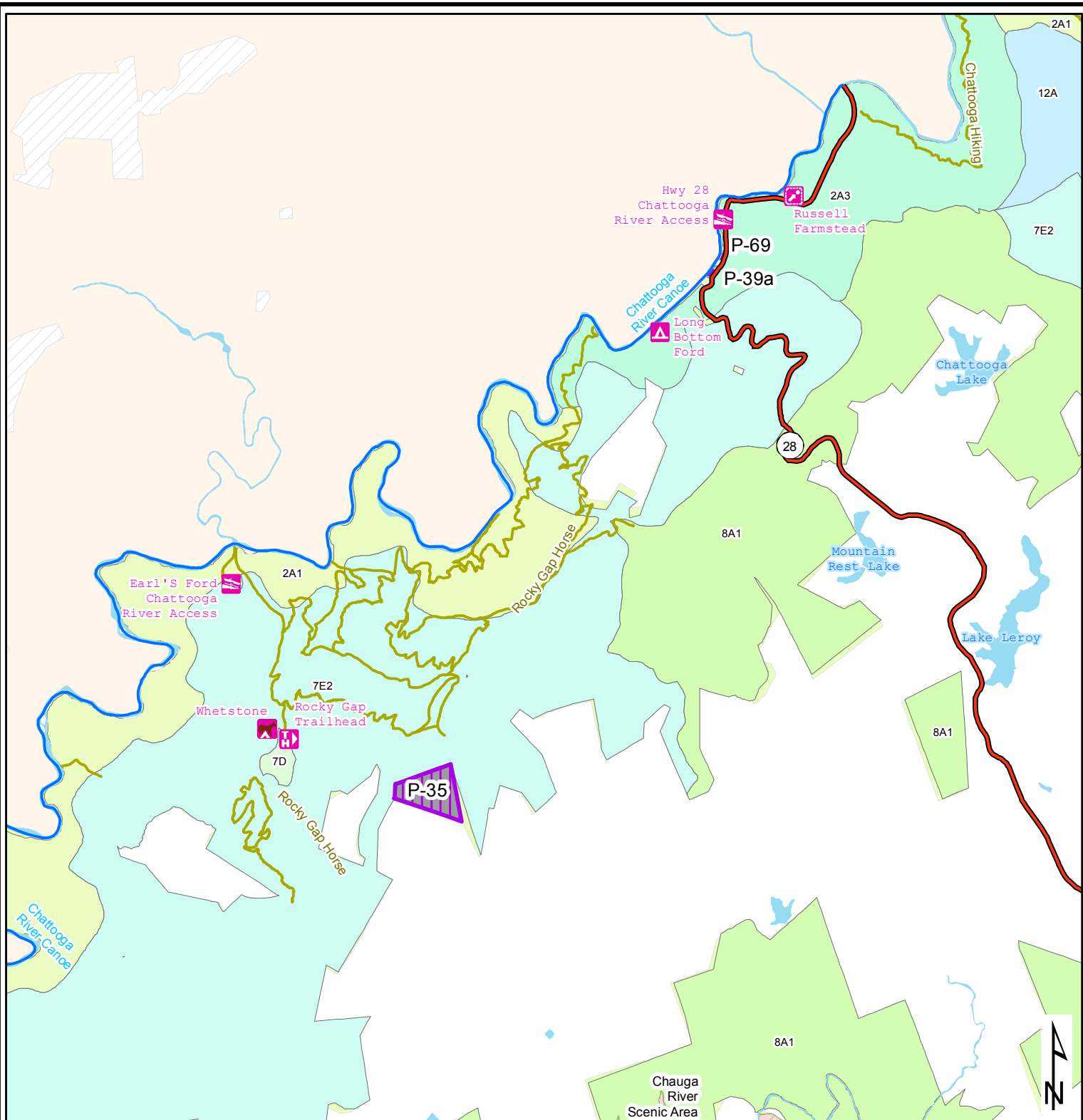
**Long Cane Ranger District
Page 5**

Coordinate System: NAD 1983 UTM Zone 17N

Disclaimer: The USDA Forest Service makes no warranty, expressed or implied, regarding the data displayed on the map, and reserves the right to correct, update, modify, or replace this information without notification.

	Tract		7D
	4D		8B2
	5C		10B





USFS Tracts Without Management Area or Prescription Designation

Andrew Pickens Ranger District
Page 1

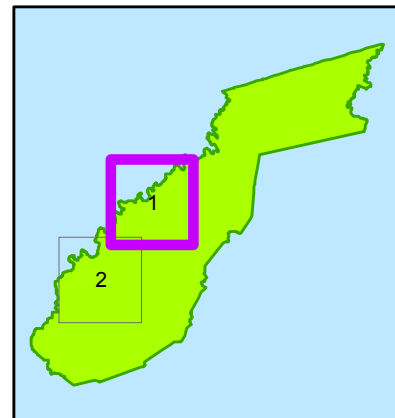
Coordinate System: NAD 1983 UTM Zone 17N

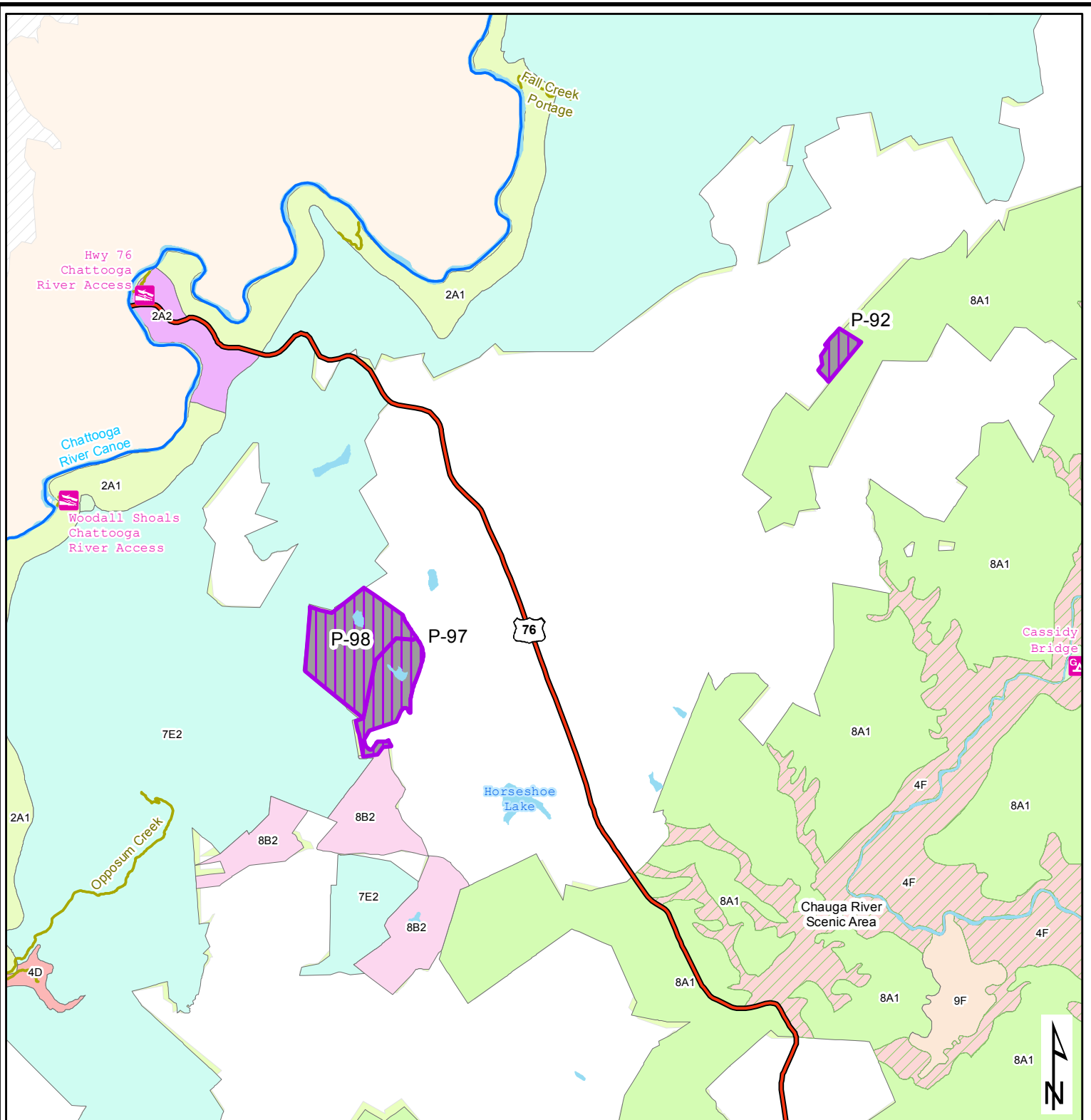
Disclaimer: The USDA Forest Service makes no warranty, expressed or implied, regarding the data displayed on the map, and reserves the right to correct, update, modify, or replace this information without notification.

	Tract		7D
	2A1		7E2
	2A3		8A1
	4F		12A



gholden, 11/18/2019 4:22:00 PM





	Tract		7D
	2A1		7E2
	2A2		8A1
	4D		8B2
	4F		9F

USFS Tracts Without Management Area or Prescription Designation

Andrew Pickens Ranger District
Page 2

Coordinate System: NAD 1983 UTM Zone 17N

Disclaimer: The USDA Forest Service makes no warranty, expressed or implied, regarding the data displayed on the map, and reserves the right to correct, update, modify, or replace this information without notification.



gholden, 11/18/2019 4:22:05 PM

