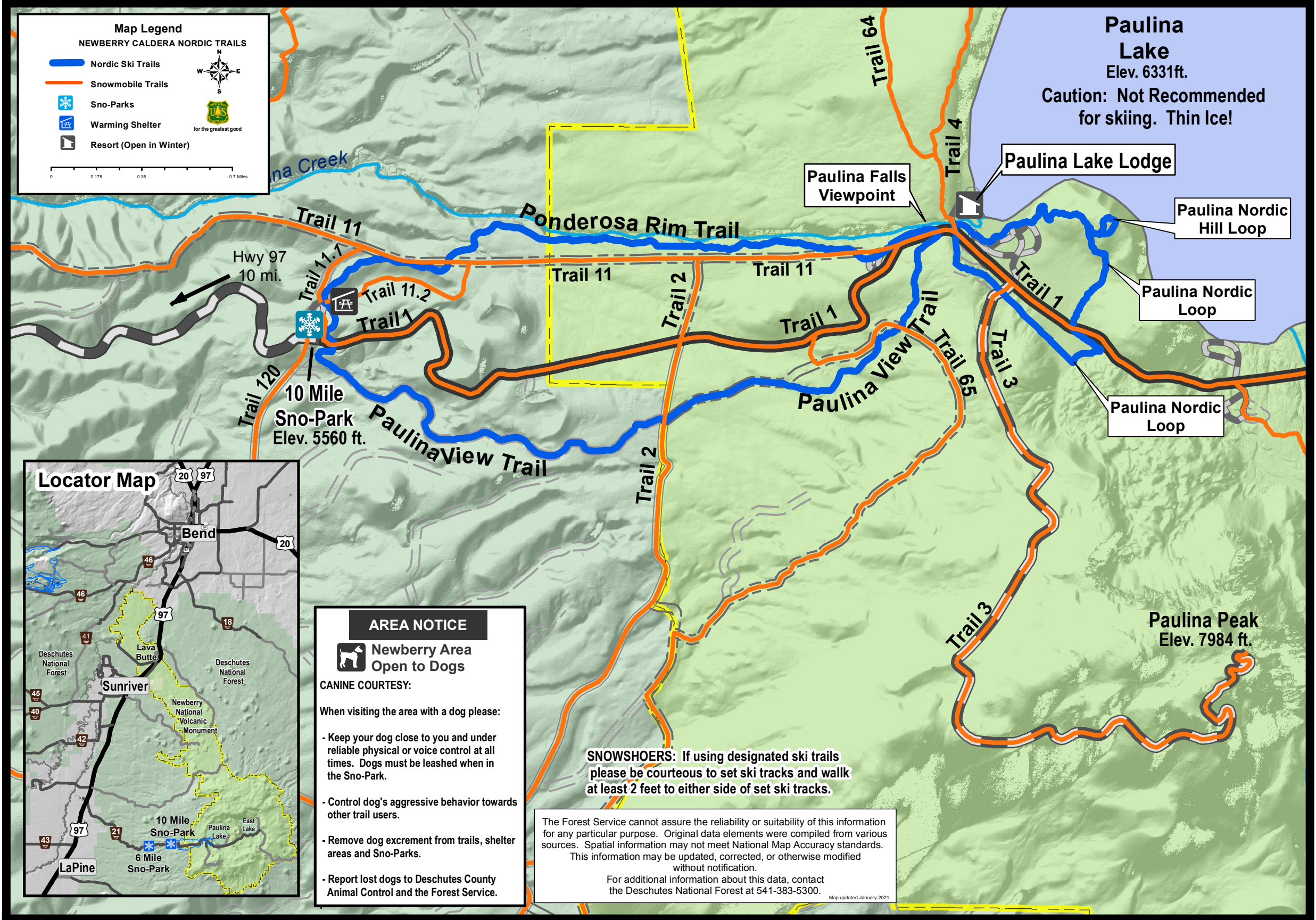


NEWBERRY CALDERA NORDIC TRAILS

Map Legend
NEWBERRY CALDERA NORDIC TRAILS

- Nordic Ski Trails
- Snowmobile Trails
- Sno-Parks
- Warming Shelter
- Resort (Open in Winter)



Paulina Lake
Elev. 6331ft.
Caution: Not Recommended for skiing. Thin Ice!

Paulina Lake Lodge

Paulina Nordic Hill Loop

Paulina Nordic Loop

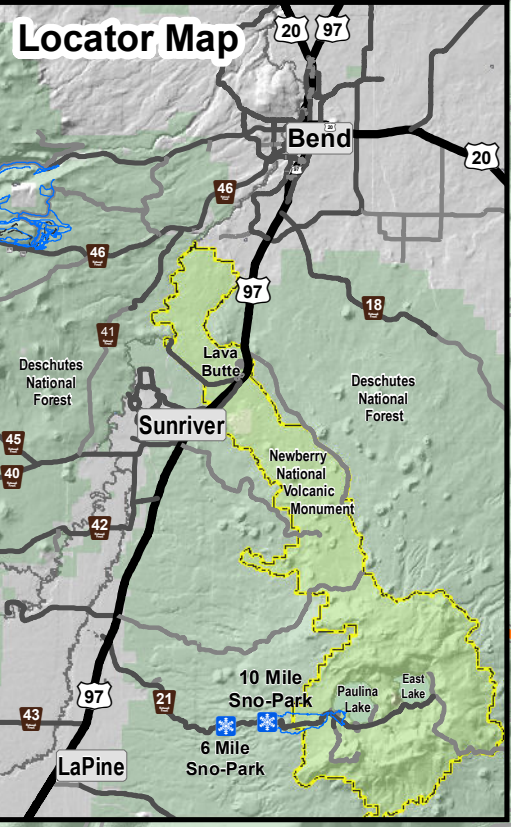
Paulina Nordic Loop

Paulina Peak
Elev. 7984 ft.

Paulina Falls Viewpoint

Hwy 97
10 mi.

10 Mile Sno-Park
Elev. 5560 ft.



AREA NOTICE

Newberry Area Open to Dogs

CANINE COURTESY:

When visiting the area with a dog please:

- Keep your dog close to you and under reliable physical or voice control at all times. Dogs must be leashed when in the Sno-Park.
- Control dog's aggressive behavior towards other trail users.
- Remove dog excrement from trails, shelter areas and Sno-Parks.
- Report lost dogs to Deschutes County Animal Control and the Forest Service.

SNOWSHOERS: If using designated ski trails please be courteous to set ski tracks and walk at least 2 feet to either side of set ski tracks.

The Forest Service cannot assure the reliability or suitability of this information for any particular purpose. Original data elements were compiled from various sources. Spatial information may not meet National Map Accuracy standards. This information may be updated, corrected, or otherwise modified without notification.

For additional information about this data, contact the Deschutes National Forest at 541-383-5300.

Map updated January 2021