

Upper Three Creeks Sno-Park Nordic Trails

CANINE COURTESY



This area is Open to Dogs

- When visiting this area with your dog please:
- Keep your dog close to you and under reliable physical or voice control at all times. Dogs must be leashed when in the Sno-Park.
 - Control dogs' aggressive behavior towards other parties.
 - Remove dog excrement from trails, shelter areas and Sno-Parks.

Report Lost dogs to Deschutes County Animal Control and the Forest Service.

To Sisters
6 miles

Lower Three Creek Sno-Park
Elev. 4,800 ft.

Upper Three Creek Sno-Park
Elev. 5,200 ft.

Three Sisters Wilderness

Cross District Sno-Park Trail
Peak View Snowshoe

Nancy's Loop

Warren's Trail

Jeff View Tie

Jeff View Shelter

Peak View Snowshoe

Triangle Hill Sno-Park Loop

Cross District Trail (Shared Use)

Snow Creek Trail

Three Creek Lake Trail

Snowshoers and Snow Hikers:
Where available please use designated snowshoe trails. These are marked with blue diamonds with a yellow snowshoer in the center. If using designated ski trails please avoid walking on set ski tracks.

Download a PDF version of this map for your cell phone by scanning this QR code and use the Avenza Maps app. Find where you are on the map by following the little blue dot.

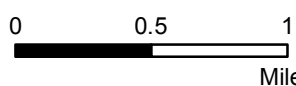


Three Creeks Sno-Park (500K8)

Available for Android or iPhone

Map Legend

- Marked Nordic Ski Trail
- Marked Snowshoe Trail
- - - Unmarked Nordic Ski Trail
- Marked Snowmobile Trail
- 201 Snowmobile Trail Junction Number
- Shelter - No Camping
- Sno-Park



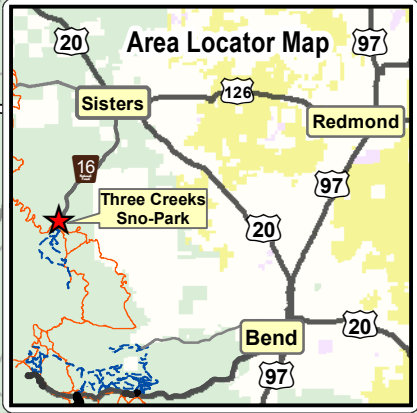
Contour interval: minor = 100', major = 500'

GPS coordinate Grids:
Gray Label = UTM, NAD27, Zone 10
Black Label = Lat, Long. NAD1983

Deschutes National Forest



Map updated January 2021



The Forest Service cannot assure the reliability or suitability of this information for any particular purpose. Spatial information may not meet National Map Accuracy standards. This information may be updated, corrected, or otherwise modified without notification. For additional information about this data contact the Deschutes National Forest at 541-383-5300.

Tam McArthur Rim