

## Firewood Measurement Guide

1/2 Cord = One full-size pick-up truck load (8' box), whether the wood is stacked carefully so it is about level with the truck box sides, or is thrown into the truck box with the pile being mounded.



Full-size pick-up  
truck (8')

=  
Equals



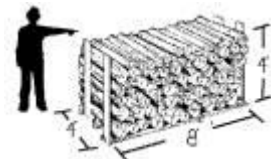
1/2 Cord

Full Cord = Two full-size pick-up truck loads (8' box), whether the wood is stacked carefully so it is about level with the truck box sides, or is thrown into the truck box with the pile being mounded.



Two Full-size pick-up  
trucks (8')

=  
Equals



Full Cord