



TEMPORARY FIRE RESTRICTIONS
GIFFORD PINCHOT NATIONAL FOREST

Pursuant to 16 U.S.C. § 551, 36 C.F.R. § 261.50(a) and (b), the following restrictions and prohibitions apply to all lands, roads, and trails within the Gifford Pinchot National Forest, within the State of Washington. This Order becomes effective on July 02, 2021, at 12:01 am (0001), and will remain in effect through September 30, 2021, or until rescinded.

PROHIBITIONS:

1. Building, maintaining, attending or using a fire, campfire or stove fire, including a charcoal fire, and pellet fire. Exhibit A **36 C.F.R. § 261.52(a)**.
2. Smoking, except within an enclosed vehicle or building, a designated campground, or while stopped in an area at least three feet in diameter that is barren or cleared of all flammable material. **36 C.F.R. § 261.52(c) and (d)**.
3. Possessing, discharging or using any kind of firework or other pyrotechnic device. **36 C.F.R. § 261.52(f)**.
4. Using an explosive. **36 C.F.R. § 261.52(b)**.
5. Discharging a Firearm. **36 C.F.R. § 261.58(m)**. Hunting is permissible. Persons possessing a valid hunting license who are legally attempting to take game are exempt from this section of the prohibition.
6. Operating or using any internal or external combustion engine without a spark arresting device properly installed, maintained and in effective working order meeting either:
 - U.S. Department of Agriculture, Forest Service Standard 5100-1a; or
 - Appropriate Society of Automotive Engineers (SAE recommended practice J335(b) and J350(a)). **36 C.F.R. § 261.52(j)**.
7. Welding, or operating acetylene or other torch with open flame. **36 C.F.R. § 261.52(i)**.
8. Possessing or using a motor vehicle off National Forest System roads or trails. **36 C.F.R. § 261.56**, EXCEPT when operating in compliance with travel management rule and the Motor Vehicle Use Map (MVUM) pursuant to **36 C.F.R. § 261.13**.
9. Violating any state law concerning burning, fires, or which is for the purpose of preventing or restricting the spread of fires. **36 C.F.R. § 261.52(k)**.

EXEMPTIONS:

Pursuant to 36 C.F.R. § 261.50(e), the following are exempt from this order:

1. Persons with a Forest Service permit specifically authorizing the prohibited act or omission.



2. Any Federal, State or local officer or member of an organized firefighting force in the performance of an official duty.
3. Petroleum-fueled stoves, lanterns or heating devices, provided such devices meet the fire underwriter's specifications for safety and can be turned off.

This prohibition is in addition to the general prohibitions in 36 C.F.R. Part 261, Subpart A.

PURPOSE:

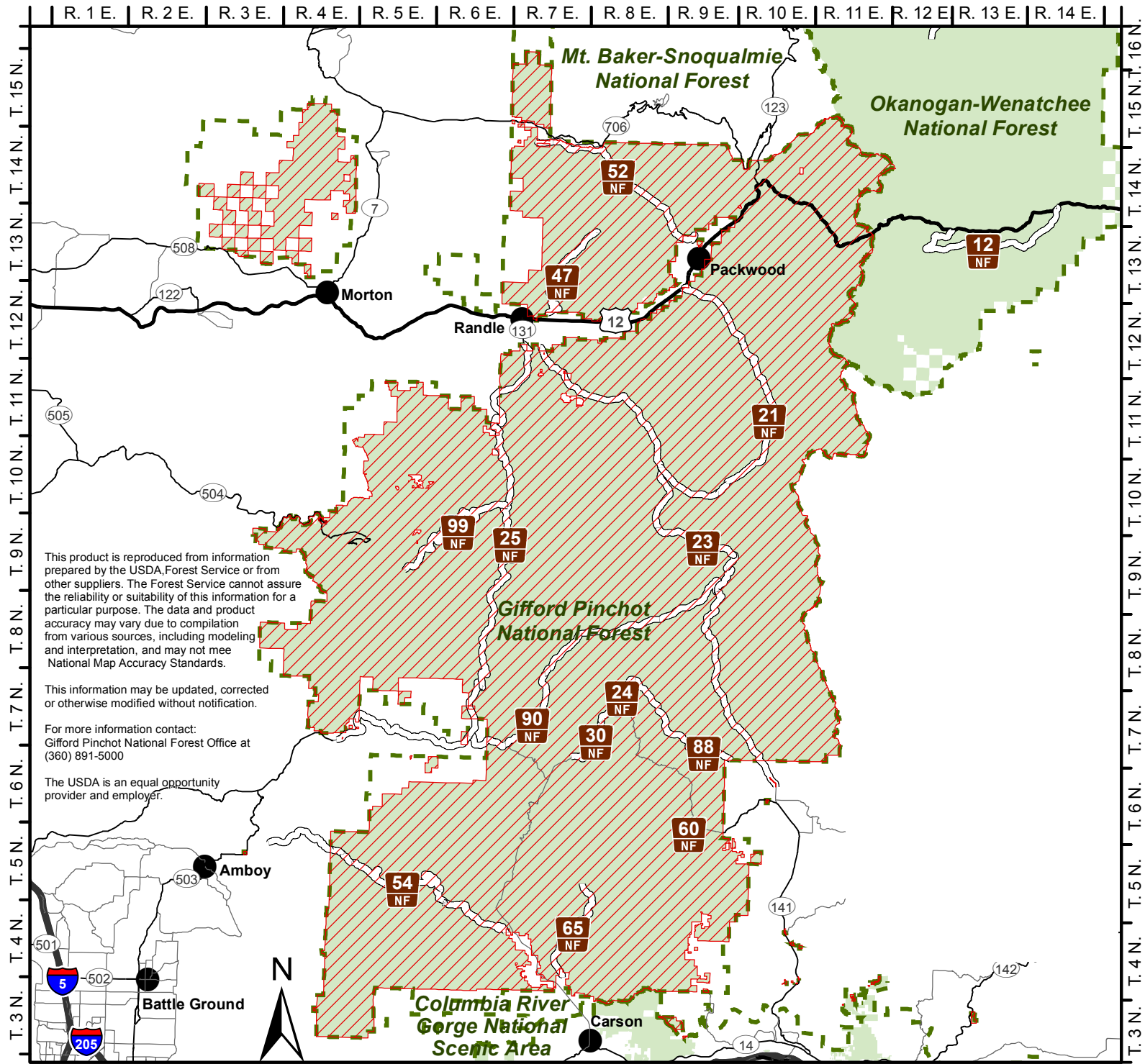
1. To enhance area-wide fire prevention and safety objectives by restrict high-risk activities.
2. To lessen the occurrence and threat of human-caused fires during high to extreme fire danger.

Violations of this prohibition are punishable by a fine of not more than \$5,000 for an individual or \$10,000 for an organization, or imprisonment for not more than 6 months, or both (16 USC § 551; 18 USC §§ 3551, 3559, 3571, and 3581).

Done at Vancouver, Washington, on _____, at _____ AM / PM.

Eric R. Veach

Eric Veach
Forest Supervisor
Gifford Pinchot National Forest

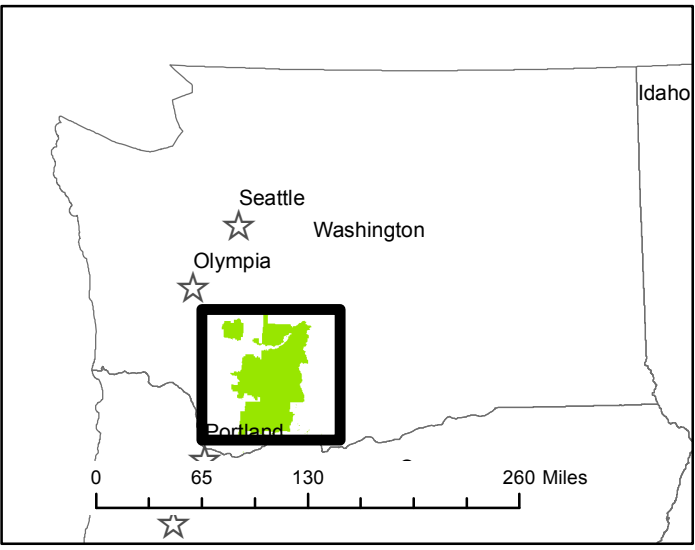


This product is reproduced from information prepared by the USDA, Forest Service or from other suppliers. The Forest Service cannot assure the reliability or suitability of this information for a particular purpose. The data and product accuracy may vary due to compilation from various sources, including modeling and interpretation, and may not meet National Map Accuracy Standards.

This information may be updated, corrected or otherwise modified without notification.

For more information contact:
Gifford Pinchot National Forest Office at
(360) 891-5000

The USDA is an equal opportunity provider and employer.



**Public Use Restrictions Order Exhibit A
Fire Prevention Restrictions
Closure Number 06-03-00-21-01
Gifford Pinchot National Forest (360) 891-5000**

Legend

- Arterial NFS Roads
- Interstate Highway
- Other Major Road
- US Highway
- State Highway and Route
- USFS Admin Boundary
- National Forest Land
- Towns

