



**UNITED STATES DEPARTMENT OF AGRICULTURE
FOREST SERVICE
IDAHO PANHANDLE NATIONAL FORESTS
ST. JOE RANGER DISTRICT
ST. MARIES, IDAHO**

**FOREST ORDER #01-04-01-21-001
TUMBLEDOWN FIRE CLOSURE ORDER**

Pursuant to 16 U.S.C. § 551, and 36 C.F.R. § 261.50(a) and/or (b), the following acts are prohibited on the National Forest System Lands described below, within the St. Joe Ranger District, Idaho Panhandle National Forests:

PROHIBITION:

1. Prohibited to go into or be upon any area which is closed for the protection of Public Health and Safety. [36 CFR 261.53(e)]
2. Being on the Trail [36 CFR 261.55(a)]
3. Being on the Road [36 CFR 261.54(e)]
4. Prohibited from going into or being upon an area [36 CFR 261.52(e)]

PURPOSE:

This closure is for public safety due to wildfire activity on the Tumbledown Fire on St. Joe RD and prohibits all methods of travel (foot, mechanized, motorized and stock) described in the Area Closure Description (Attachment A).

AREA CLOSURE DESCRIPTION:

Beginning on Highway 50 (Township 17N, Range 31W section 35, where Highway 50 leaves section 35 to the west) proceeding northeast to Eagle Point. Proceed north along the ridge to Adams Peak. Proceed northeast to where Trail 83 meets FSR214. Then, proceed north on Trail 83 to the intersection of FSR 391 on the Bitterroot Divide. Then proceeding on FSR 391 generally southeast until FSR 391 intersect with Highway 50. Then proceeding west on highway 50 towards the St. Joe River. Then proceed downriver along Highway 50 to the junction of Highway 50 and FSR 1214, the starting point.

Trail 3355, Trail 83, FSR 1214, FSR 391, and Highway 50 are not included in the closure.

Being on the following roads:

- **FSR 1940:** From its intersection at the 1214 to its terminus
- **FSR 339:** From its intersection with Highway 50 to the intersection of Highway 50
- **FSR 1223:** From its junction at Highway 50 to its terminus on Quartz Ridge
- **FSR 214:** At its junction with FSR 391 to Float Saddle
- **FSR 3546**
- **FSR 1227**
- **FSR 1411**
- **FSR 3399**
- **FSR 3723**
- **FSR 1227A**

Being on the following Trails:

- **Trail 1424**
- **Trail 1411**
- **Trail 1223**
- **Trail 1226**
- **Trail 3723**
- **Trail 3459**
- **Trail 1231**
- **Trail 214A**

Being in Campground:

Conrad Crossing

IMPLEMENTATION:

This order will be in effect from **July 13, 2021** and shall remain in effect until, November 30, 2021 or until the order is rescinded.

These prohibitions are in addition to the general prohibitions in 36 C.F.R. Part 261, Subpart A.

EXEMPTIONS:

Pursuant to 36 CFR 261.50(e), the following persons are exempt from this Order:

(1) Persons with a permit specifically authorizing the otherwise prohibited act or omission.

(4) Any Federal, State, or local officer, or member of an organized rescue or fire fighting force in the performance of an official duty; and

VIOLATION:

Violation of these prohibitions is punishable by a fine of not more than \$5,000 for an individual or \$10,000 for an organization, imprisonment for not more than 6 months, or both. (16 U.S.C. §551 and 18 U.S.C. §§ 3559, 3571(b)(6) and 3581(b)(7).

INFORMATION:

Further information regarding this Order may be obtained at the St. Joe Ranger District, 222 S. 7th Street, Suite 1, St. Marie, Idaho. Telephone: (208) 245-2531.

Signed at Coeur d'Alene, Idaho, this 13th day of July, 2021

Carl Petrick
Forest Supervisor
Idaho Panhandle National Forests

1. Assessment of Need and Enforcement Plan

1. Background:

The Forest Service has prepared this emergency closure due to wildfire activity. It is necessary to close this area, in order to protect public safety during fire operations.

2. Intent of Subpart B order:

The intent of the following order is to protect public safety by restricting access on and around National Forest System lands, while providing for efficient operations while this closure is in effect.

3. Enforcement:

Enforcement of the closure forest order will be a combination of signing, public information, personal contacts, and law enforcement actions. The following summarizes the enforcement goals with respect to this closure order:

- The goal will be to ensure that people are informed of the closure order. This will initially be promulgated through contacts and information releases before the special order goes into effect.
- LEO's & FPO's will endeavor to enforce the order through patrols and contacts when available to do so. Enforcement with a warning or citation will be at the discretion of the Law Enforcement Officer (LEO) or Forest Protection Officer (FPO).

4: Posting:

Current posting will be modified to reflect the new prohibition. Posting will be completed by the Forest Staff and will be posted at a minimum on the IPNF Alerts & Notices web page, the District office and signage in the immediate area of the closure.

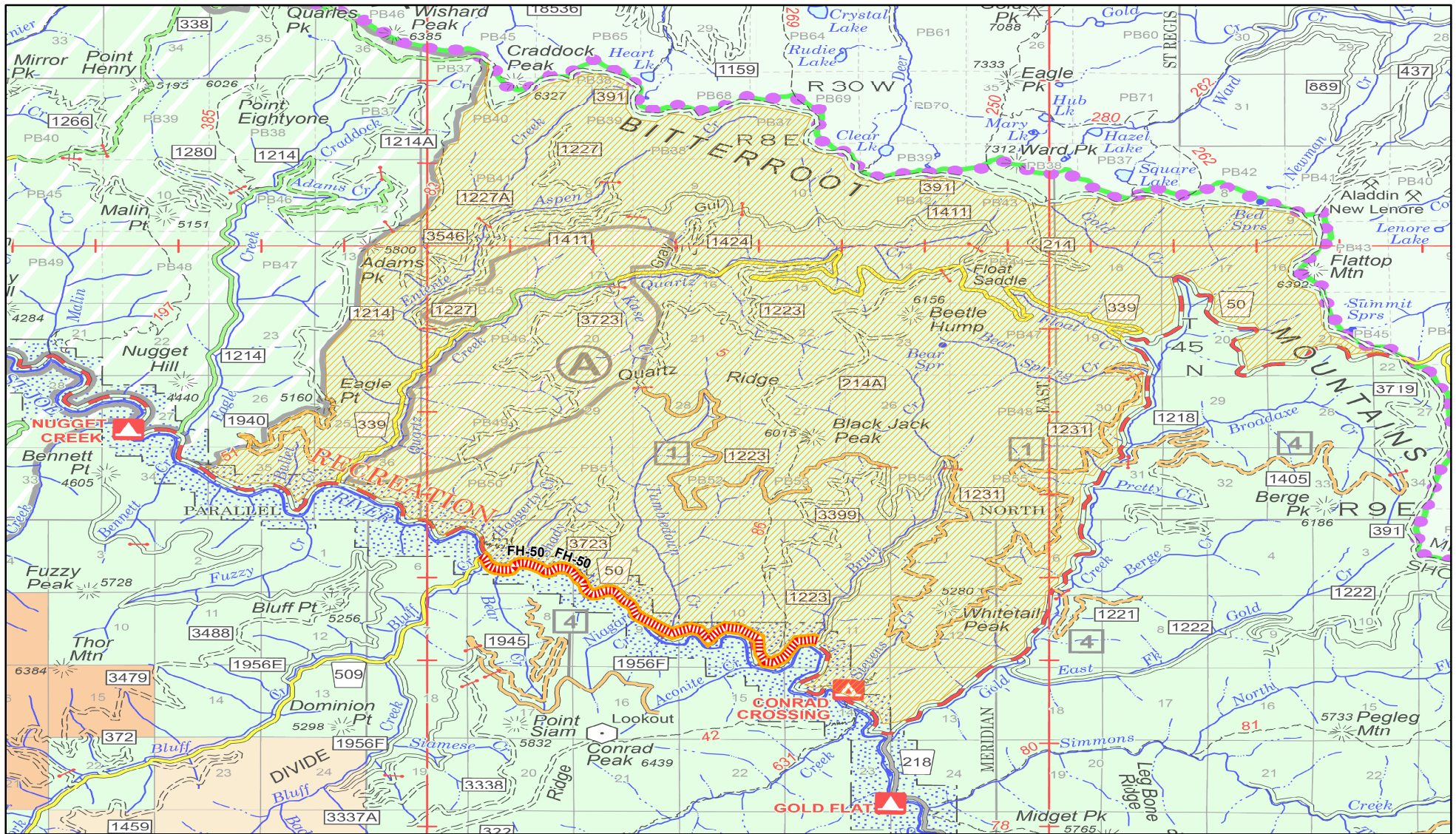


Forest Closures

Idaho Panhandle National Forests

Closure Order: 01-04-02-21-001

Attachment A



Closure Information

Name: Tumbledown Closure
Closure Order Number: 01-04-02-21-001
Effective Date: 07/10/2021
Rescind Date: 11-30-2021; or until rescinded
Reason: Provide public safety; prevent interference with firefighting activity
Closed Road(s): FH50 - under Sheriff's authority
Closed Site(s): Conrad Crossing Campground

Disclaimer

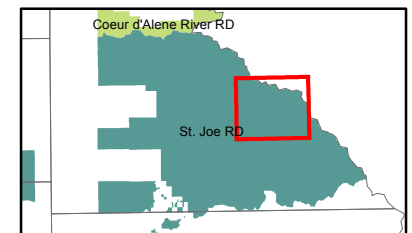
The USDA Forest Service makes no warranty, expressed or implied regarding the data displayed on this map, and reserves the right to correct, update, modify, or replace this information without notification.

Closures

- Campground Closure
- Area
- Route Closure



IDAHO
Shoshone



Map Author: amymthompson; Map Creation Date: 7/10/2021