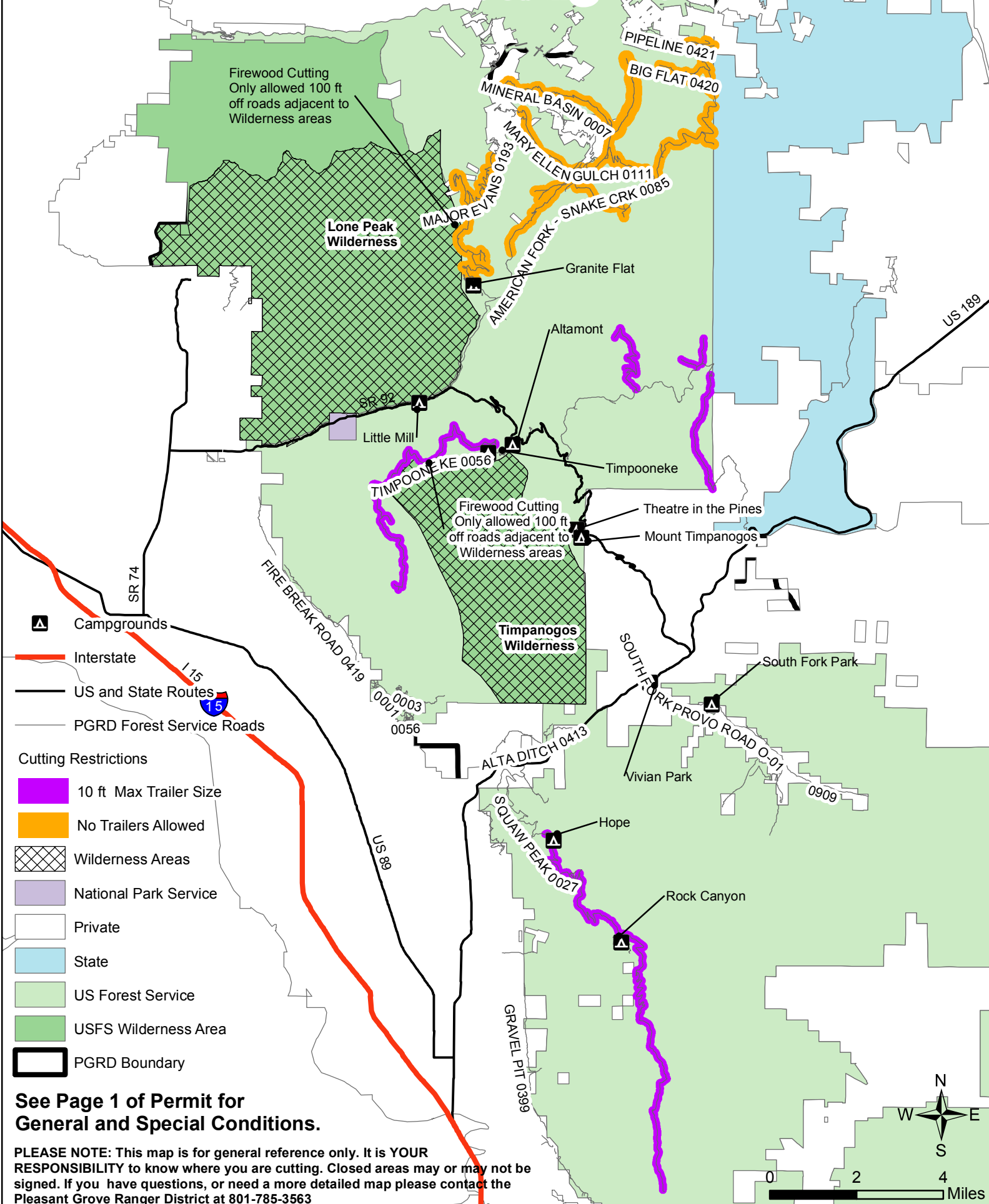


Uinta-Wasatch-Cache National Forest Pleasant Grove Ranger District

Firewood Cutting Areas



Firewood Cutting
Only allowed 100 ft
off roads adjacent to
Wilderness areas

Firewood Cutting
Only allowed 100 ft
off roads adjacent to
Wilderness areas

- Campgrounds
- Interstate
- US and State Routes
- PGRD Forest Service Roads
- Cutting Restrictions**
- 10 ft Max Trailer Size
- No Trailers Allowed
- Wilderness Areas
- National Park Service
- Private
- State
- US Forest Service
- USFS Wilderness Area
- PGRD Boundary

See Page 1 of Permit for General and Special Conditions.

PLEASE NOTE: This map is for general reference only. It is YOUR RESPONSIBILITY to know where you are cutting. Closed areas may or may not be signed. If you have questions, or need a more detailed map please contact the Pleasant Grove Ranger District at 801-785-3563

