



**UNITED STATES DEPARTMENT OF AGRICULTURE  
FOREST SERVICE  
IDAHO PANHANDLE NATIONAL FORESTS  
ST. JOE RANGER DISTRICT  
ST. MARIES, IDAHO**

**FOREST ORDER #01-04-01-21-007  
TUMBLEDOWN FIRE CLOSURE**

Pursuant to 16 U.S.C. § 551 and 36 C.F.R. § 261.50(a) and (b), the following acts are prohibited on the National Forest System land described below, within the St. Joe River Ranger District on the Idaho Panhandle National Forests.

**PROHIBITIONS:**

1. Going into or being upon the closed area [36 CFR 261.52(e)]
2. Being on the Road [36 CFR 261.54(e)]
3. Being on the Trail [36 CFR 261.55(a)]

**AREA CLOSURE:**

Starting on the south side of the St. Joe River across from the junction of Highway 50 and FSR 1223, follow the high-water mark west to the Aconite Creek. Proceed upstream on the southeast side of Aconite Creek to Conrad Peak. Then proceeding southwest along FSR 322 to the junction of FSR 322 and FSR 3338. Proceed northwest on FSR 3338 until Siamese Creek intersects FSR 3338. Proceeding west down stream along Siamese Creek to where Siamese Creek intersects with FSR 1956F. Proceed north on FSR 1956F to the junction of 1956F and FSR 509. Proceed west on the southern boundary of Section 7 in T44N, R8E to the southwest corner of Section 10 in T44N, R7E. Proceed north on the west boundary of section 10 in T44N, R7E, to the northwest corner of Section 10. Proceed west along the southern boundary of Section 4 in T44N, R7E where Periwinkle Creek intersect the southern boundary of Section 4. Proceed north along Periwinkle Creek until Periwinkle Creek intersects with the east boundary of Section 28 in T45N, R7E. Continue north to the northwest corner of Section 22 in T45N, R7E. Proceed east to the northeast corner of Section 24 in T45N, R7E. Continue south, to the southwest corner of Section PB49 in T45N, R8E. Continue east along the southern boundary of Section PB49 to the northeast corner of Section PB54 in T45N, R8E. Proceed south to FSR 1223, following FSR 1223, to the starting point at the junction of Highway 50 and FSR 1223.

**CLOSED CAMPSITE:**

**Nugget Creek Campsite**

**CLOSED ROAD:**

**FSR 1214:** From its junction at Highway 50 to FSR 1214's furthest extent.

**FSR 339:** From its junction at Highway 50 (Quartz Creek) to the junction of FSR 339 and FSR 214.

**FSR 1223:** From its junction at Highway 50 to FSR 1223's furthest extent.

**FSR 509:** From its junction at Highway 50 to the junction of FSR1956E and FSR 509.

**FSR 1956E:** From its junction with FSR 509 to its terminus at Bennett Point.

**FSR 1956F:** From its junction with FSR 509 to its junction at FSR 3338 and FSR 1945.

**FSR 3338:** From its junction with FSR 1945 to the junction of FSR 3338 and FSR 322.

**FSR 322:** From its junction at FSR 332 and FSR 201 to its terminus at Conrad Peak.

**PURPOSE:**

This closure is for public safety due to wildfire effects on the Tumbledown Fire.

**IMPLEMENTATION:**

This order will be in effect from **August 30, 2021 at 5:00 pm and shall remain in effect until, November 30, 2021**, or until the order is rescinded.

These prohibitions are in addition to the general prohibitions in 36 C.F.R. Part 261, Subpart A.

**EXEMPTIONS:**

Pursuant to 36 C.F.R. § 261.50(e), the following persons are exempt from this Order:

1. Persons with a special use authorization or other Forest Service authorization specifically exempting them from the effect of this order. 36 C.F.R. § 261.50(e)(1).
2. Any Federal, State, or local officer, or member of an organized rescue or fire fighting force in the performance of an official duty. 36 C.F.R. § 261.50(e)(4).

**VIOLATION:**

Violation of these prohibitions is punishable by a fine of not more than \$5,000 for an individual or \$10,000 for an organization, imprisonment for not more than 6 months, or both. (16 U.S.C. §551 and 18 U.S.C. §§ 3559, 3571(b)(6) and 3581(b)(7)).

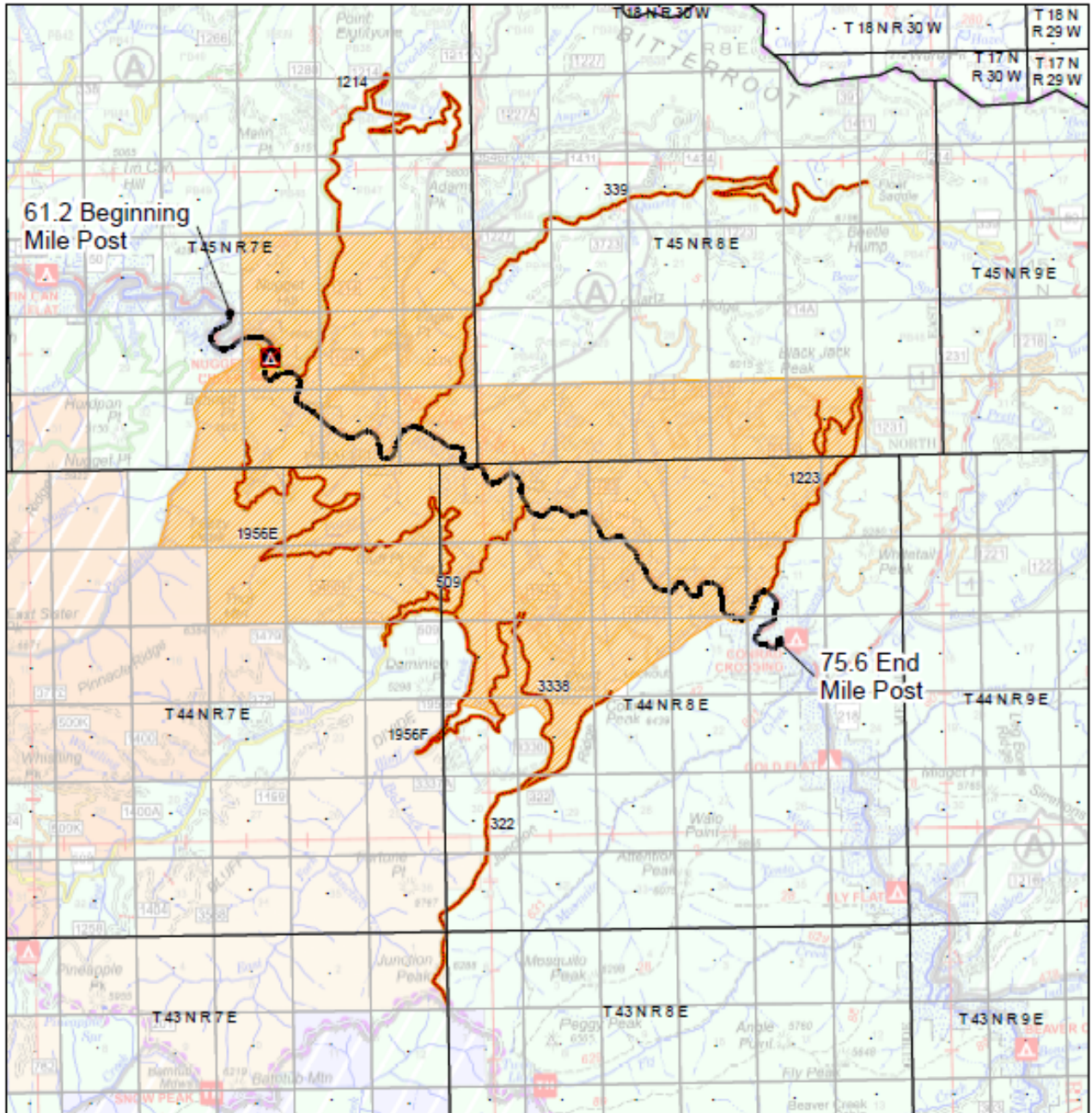
**INFORMATION:**

Further information regarding this Order may be obtained at the St. Joe Ranger District, 222 S. 7<sup>th</sup> Street, Suite 1, St. Marie, Idaho. Telephone: (208) 245-2531.

Signed at *Coeur d'Alene*, Idaho, this 30<sup>th</sup> day of August 2021

---

Carl Petrick  
Forest Supervisor  
Idaho Panhandle National Forests



**Closure Information**

Name: Tumbledown Fire Closure  
 Closure Order Number : 01-04-01-21-007  
 Effective Date : August 27, 2021  
 Rescind Date : June 01, 2021 or until Rescinded  
 Purpose : Public Safety due to Wildfire Effects  
 Road Number(s): 322, 339, 509, 1214, 1223, 1956E, 1956F, 3338  
 Campsite: Nugget Creek

**Disclaimer**

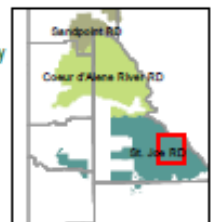
The USDA Forest Service makes no warranty, expressed or implied regarding the data displayed on this map, and reserves the right to correct, update, modify, or replace this information without notification.

**Closures**

- Area Closure
- Closed Campsite
- Road Closure
- FH 50 State Closure



IDAHO  
 Shoshone County



## **1. Assessment of Need and Enforcement Plan**

### **1. Background:**

The Forest Service has prepared this emergency closure due to wildfire activity. It is necessary to close this area, in order to protect public safety during fire operations.

### **2. Intent of Subpart B order:**

The intent of the following order is to protect public safety by restricting access on and around National Forest System lands, while providing for efficient operations while this closure is in effect.

### **3. Enforcement:**

Enforcement of the closure forest order will be a combination of signing, public information, personal contacts, and law enforcement actions. The following summarizes the enforcement goals with respect to this closure order:

- The goal will be to ensure that people are informed of the closure order. This will initially be promulgated through contacts and information releases before the special order goes into effect.
- LEO's & FPO's will endeavor to enforce the order through patrols and contacts when available to do so. Enforcement with a warning or citation will be at the discretion of the Law Enforcement Officer (LEO) or Forest Protection Officer (FPO).

### **4: Posting:**

Current posting will be modified to reflect the new prohibition. Posting will be completed by the Forest Staff and will be posted at a minimum on the IPNF Alerts & Notices web page, the District office and signage in the immediate area of the closure.