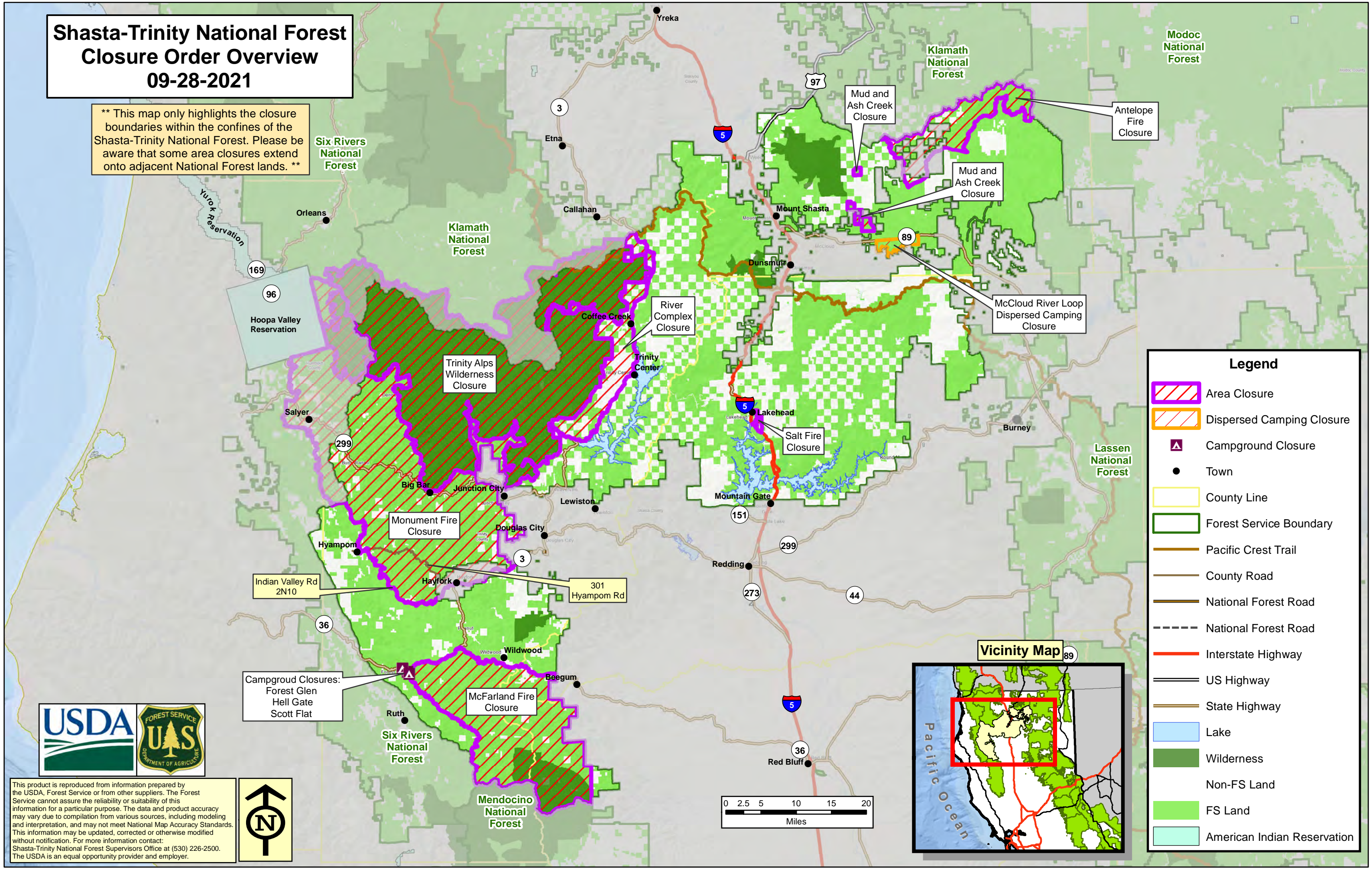


# Shasta-Trinity National Forest Closure Order Overview

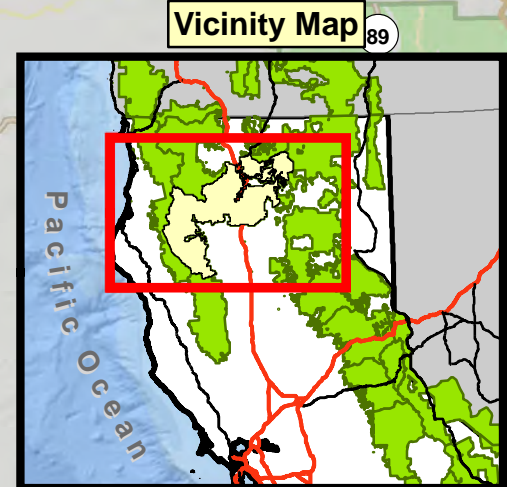
## 09-28-2021

\*\* This map only highlights the closure boundaries within the confines of the Shasta-Trinity National Forest. Please be aware that some area closures extend onto adjacent National Forest lands. \*\*



### Legend

- Area Closure
- Dispersed Camping Closure
- Campground Closure
- Town
- County Line
- Forest Service Boundary
- Pacific Crest Trail
- County Road
- National Forest Road
- National Forest Road
- Interstate Highway
- US Highway
- State Highway
- Lake
- Wilderness
- Non-FS Land
- FS Land
- American Indian Reservation



This product is reproduced from information prepared by the USDA, Forest Service or from other suppliers. The Forest Service cannot assure the reliability or suitability of this information for a particular purpose. The data and product accuracy may vary due to compilation from various sources, including modeling and interpretation, and may not meet National Map Accuracy Standards. This information may be updated, corrected or otherwise modified without notification. For more information contact: Shasta-Trinity National Forest Supervisors Office at (530) 226-2500. The USDA is an equal opportunity provider and employer.

