



Forest Order No. 03-21-18
Eldorado National Forest
Pacific Southwest Region
Caldor Fire Area, Road, and Trail Closure

Pursuant to 16 U.S.C. § 551 and 36 C.F.R. § 261.50(a) and (b), and to provide for public safety, the following acts are prohibited within the Eldorado National Forest. This Order is effective from September 30, 2021, through March 31, 2022.

1. Going into or being upon National Forest System lands within the Caldor Fire Closure Area, as described in Exhibit A and shown on Exhibit C. 36 C.F.R. § 261.52(e).
2. Being on National Forest System roads within the Caldor Fire Closure Area, including National Forest System roads that comprise part of the Caldor Fire Closure boundary, as listed in Exhibit B and shown on Exhibit C. 36 C.F.R. § 261.54(e).
3. Being on National Forest System trails within the Caldor Fire Closure Area, including National Forest System trails that comprise part of the Caldor Fire Closure boundary, as listed in Exhibit B and shown on Exhibit C. 36 C.F.R. § 261.55(a).

Pursuant to 36 C.F.R. § 261.50(e), the following persons are exempt from this Order:

1. Any Federal, State, or local officer, or member of an organized rescue or fire fighting force in the performance of an official duty.
2. Persons with Forest Service Permit No. FS-7700-48 (Permit for Use of Roads, Trails, or Areas Restricted by Regulation or Order), specifically exempting them from this Order.
3. Persons with Federal Energy Regulatory Commission license or Forest Service special use authorization for an electric transmission line, an oil or gas pipeline, or communications site may access their permit areas to conduct administrative and emergency functions to property and related assets.
4. Commercial recreation special-use permit holders and their customers are not exempt from this Forest Order, however, they may access the permitted areas under the terms and conditions of their permits to conduct administrative functions and to protect property and related assets. Recreation residence permit holders are not exempt from this order.
5. Persons with a Forest Service non-special use written authorization to conduct nonrecreational activities, such as harvesting timber, forest products or grazing livestock.
6. Owners or lessees of land and residents of such private landholdings, to the extent to access their land. Recreation residence permit holders are not exempt from this order.

These prohibitions are in addition to the general prohibitions contained in 36 C.F.R. Part 261, Subpart A.

A violation of these prohibitions is punishable by a fine of not more than \$5,000 for an individual or \$10,000 for an organization, or imprisonment for not more than 6 months, or both. 16 U.S.C. § 551 and 18 U.S.C. §§ 3559, 3571, and 3581.

Executed in Placerville, California, this 29th day of September 2021.



JEFF MARSOLAIS
Forest Supervisor
Eldorado National Forest
Pacific Southwest Region

**Forest Order No. 03-21-18
Eldorado National Forest
Pacific Southwest Region
Caldor Fire Area, Road, and Trail Closure**

Exhibit A

The boundary of the Caldor Fire Closure Area begins at the intersection of California Highway 88 and the Eldorado National Forest boundary, as shown on Exhibit C, and continues as described below:

- The closure boundary continues south along the Eldorado National Forest boundary to its intersection with Alpine County Road 196,
- then continues south on Alpine County Road 196 to its intersection with Forest Trail No. 18E21,
- then continues northwest on Forest Trail No. 18E21 to its intersection with Forest Trail No. 18E07,
- then continues west on Forest Trail No. 18E07 to its intersection with Forest Trail No. 18E13,
- then continues southwest on Forest Trail No. 18E13 to its intersection with Forest Trail No. 17E21,
- then continues northwest on Forest Trail No. 17E21 to its intersection with 17E24,
- then continues southwest on Forest Trail No. 17E24 to its intersection with Forest Trail No. 17E24 at Mud Lake,
- then continues south and east on Forest Trail No. 17E24 at Mud Lake to its intersection with Bear River,
- then continues north 2.58 miles from Bear River to its intersection with Forest Road No. 9N09,
- then continues west on Forest Road No. 9N09 to its intersection with Highway 88,
- then continues west on Highway 88 to its intersection with Omo Ranch Road,
- then continues west on Omo Ranch Road to its intersection with Fairplay Road,
- then continues northwest on Fairplay Road to its intersection with Mt. Aukum Road,
- then continues north on Mt. Aukum Road to its intersection with Sly Park Road,
- then continues north on Sly Park Road to its intersection with Highway 50,
- then continues east on Highway 50 to its intersection with Ice House Road,
- then continues north on Ice House Road to its intersection with Granite Springs Road (Forest Road No. 11N99),

- then continues east on Granite Springs Road (Forest Road No. 11N99) to its intersection with Forest Road No. 11N34,
- then continues north on Forest Road No. 11N34 to its intersection with South Fork Creek,
- then continues north on South Fork Creek to its intersection with Forest Road No. 12N25B,
- then continues northwest on Forest Road No. 12N25B to its intersection with Forest Road. No. 12N25,
- then continues north on Forest Road No. 12N25 to its intersection with Forest Road No. 11N37,
- then continues east on Forest Road No. 11N37 to its intersection with Forest Road No. 11N37F,
- then continues north on Forest Road No. 11N37F to its intersection with Forest Road No. 11N37FA,
- then continues north on Forest Road No. 11N37FA to its intersection with Forest Trail No. 15E12,
- then continues east on Forest Trail No. 15E12 to its intersection with Forest Road No. 11N26,
- then continues north on Forest Road No. 11N26 to its intersection with Forest Trail No. 16E19,
- then continues west then east on Forest Trail No. 16E19 to its intersection with Forest Trail No. 16E21,
- then continues north on Forest Trail No. 16E21 to its intersection with Jones Fork Silver Creek,
- then continues northeast along Jones Fork Silver Creek to its intersection with Forest Trail No. 16E08,
- then continues northeast on Forest Trail No. 16E08 to its intersection with Forest Trail No. 16E30,
- then continues southeast on Forest Trail No. 16E30 to its intersection with the Eldorado National Forest boundary,
- then continues southeast along the Eldorado National Forest boundary back to the starting point at its intersection with California Highway 88, as shown on Exhibit B.

Forest Order No. 03-21-18
Eldorado National Forest
Pacific Southwest Region
Caldor Fire Area, Road, and Trail Closure

Exhibit B

Closed Roads:

- 08N18
- 08N23
- 08N23A
- 08N23C
- 08N25
- 08N26
- 08N26B
- 08N26C
- 08N27
- 08N31
- 08N31A
- 08N31B
- 08N37
- 08N42
- 08N42C
- 08N42E
- 08N42F
- 08N43
- 08N43A
- 08N44
- 08N45
- 08N46
- 08N46A
- 08N47
- 08N47A
- 08N48
- 08N48A
- 08N49
- 08N49B
- 08N51
- 08N54
- 08N54B
- 08N55
- 08N55A
- 08N55C
- 08N55E
- 08N55F
- 08N55H
- 08N55W
- 08N56
- 08N57
- 08N57C
- 08N57D
- 08N58
- 08N58B
- 08N58C
- 08N58D
- 08N60
- 08N61
- 08N66
- 08N66A
- 08N67
- 08N67A
- 08N72
- 08N72C
- 08N76
- 08N77
- 08N78
- 08N79
- 08N81
- 08N87
- 08N91
- 08N92
- 08N92A
- 09N02
- 09N02A
- 09N05
- 09N05A
- 09N06
- 09N07
- 09N08
- 09N09
- 09N10
- 09N10D
- 09N10E
- 09N10G
- 09N10H
- 09N10K
- 09N11
- 09N11A
- 09N14
- 09N14A
- 09N14H
- 09N14K
- 09N14L
- 09N14M
- 09N14N
- 09N14O
- 09N14W
- 09N15
- 09N15A
- 09N15B
- 09N16
- 09N17
- 09N17A
- 09N17B
- 09N17C
- 09N17D
- 09N17H
- 09N17J
- 09N17K
- 09N17L
- 09N17M
- 09N17MS
- 09N17Q
- 09N17R
- 09N17S
- 09N17T
- 09N17U
- 09N17W
- 09N17Z
- 09N18
- 09N19
- 09N20
- 09N22
- 09N22B
- 09N22D
- 09N23
- 09N23A
- 09N24
- 09N24A
- 09N24B
- 09N24C
- 09N25
- 09N25B
- 09N25D
- 09N25E
- 09N25F
- 09N25G
- 09N30
- 09N30A
- 09N30C
- 09N30J
- 09N30JW
- 09N30K
- 09N30L
- 09N30M
- 09N30N
- 09N30P
- 09N30R
- 09N30RA
- 09N30T
- 09N30U
- 09N30V
- 09N30W
- 09N31
- 09N32
- 09N33
- 09N34
- 09N34C
- 09N34D
- 09N34G
- 09N35
- 09N36
- 09N38

• 09N38A	• 09N68	• 09NY43	• 10N26C	• 10N42A
• 09N38B	• 09N69	• 09NY46	• 10N26C	• 10N43
• 09N38C	• 09N71	• 09NY47	• 10N26D	• 10N43
• 09N39	• 09N72	• 09NY48	• 10N27	• 10N43C
• 09N40	• 09N73	• 10N01	• 10N28	• 10N44
• 09N40A	• 09N75	• 10N01A	• 10N28A	• 10N46
• 09N40B	• 09N76	• 10N01B	• 10N28C	• 10N46G
• 09N41	• 09N76B	• 10N03	• 10N28D	• 10N46J
• 09N41A	• 09N76C	• 10N04	• 10N28F	• 10N46L
• 09N42	• 09N77	• 10N04A	• 10N28W	• 10N46M
• 09N42A	• 09N77A	• 10N04B	• 10N29	• 10N47
• 09N42C	• 09N78	• 10N06	• 10N29B	• 10N47A
• 09N43	• 09N78A	• 10N07	• 10N29C	• 10N47B
• 09N44	• 09N79	• 10N08	• 10N30	• 10N47C
• 09N44A	• 09N79A	• 10N08A	• 10N30	• 10N50
• 09N45	• 09N80	• 10N08B	• 10N31	• 10N50B
• 09N46	• 09N84	• 10N11	• 10N31A	• 10N50C
• 09N46D	• 09N86	• 10N11A	• 10N31B	• 10N50G
• 09N46J	• 09N87	• 10N13	• 10N32	• 10N50H
• 09N47	• 09N92	• 10N13D	• 10N32A	• 10N50M
• 09N47A	• 09N93	• 10N14	• 10N32B	• 10N50R
• 09N48	• 09N95	• 10N14A	• 10N33	• 10N52
• 09N49	• 09N95B	• 10N14G	• 10N33A	• 10N52A
• 09N49B	• 09N96	• 10N14H	• 10N34	• 10N55
• 09N49E	• 09N96A	• 10N14HB	• 10N34D	• 10N55E
• 09N49H	• 09N96B	• 10N16	• 10N35	• 10N55H
• 09N50	• 09N96C	• 10N16A	• 10N35B	• 10N55HS
• 09N50B	• 09NY07	• 10N16B	• 10N36	• 10N55K
• 09N51	• 09NY08	• 10N16BA	• 10N38	• 10N55P
• 09N53	• 09NY08B	• 10N16BB	• 10N39	• 10N55R
• 09N54	• 09NY12	• 10N16BC	• 10N39D	• 10N55S
• 09N55	• 09NY14	• 10N16C	• 10N39F	• 10N55W
• 09N55E	• 09NY14A	• 10N16D	• 10N40	• 10N57
• 09N56	• 09NY21	• 10N16E	• 10N40	• 10N57
• 09N57	• 09NY22	• 10N17	• 10N40C	• 10N58
• 09N58C	• 09NY26	• 10N19	• 10N40D	• 10N59
• 09N59	• 09NY26A	• 10N20	• 10N40E	• 10N59
• 09N60	• 09NY32	• 10N22	• 10N40G	• 10N59
• 09N61	• 09NY32C	• 10N23	• 10N40GS	• 10N59C
• 09N62	• 09NY33	• 10N23A	• 10N40M	• 10N59W
• 09N63	• 09NY33A	• 10N23B	• 10N40N	• 10N61
• 09N65	• 09NY33C	• 10N25	• 10N40R	• 10N61
• 09N65A	• 09NY33D	• 10N25A	• 10N40T	• 10N61C
• 09N66	• 09NY34	• 10N25W	• 10N41	• 10N62
• 09N67	• 09NY37	• 10N26	• 10N41B	• 10N62C
• 09N67A	• 09NY40	• 10N26B	• 10N42	• 10N62D

- 10N63
- 10N64
- 10N64W
- 10N65
- 10N65A
- 10N66
- 10N67
- 10N68
- 10N69
- 10N72
- 10N75
- 10N75A
- 10N76
- 10N82
- 10N83
- 10N83
- 10N83B
- 10N83C
- 10N83J
- 10N83K
- 10N83M
- 10N83N
- 10N83R
- 10N83S
- 10N83W
- 10N84
- 10N87
- 10N91
- 10N91A
- 10N91B
- 10N91D
- 10N91E
- 10N94
- 10N94A
- 10N95
- 10N98
- 10N98B
- 10N99
- 10NY02
- 10NY04
- 10NY04E
- 10NY05
- 10NY06
- 10NY06B
- 10NY07
- 10NY09
- 10NY10
- 10NY12
- 10NY13
- 10NY16
- 10NY21
- 10NY22
- 10NY22
- 10NY26
- 10NY26A
- 10NY32
- 11N01
- 11N02
- 11N02A
- 11N02W
- 11N06
- 11N06A
- 11N06F
- 11N06F
- 11N09
- 11N09A
- 11N10
- 11N10A
- 11N11
- 11N13
- 11N14
- 11N15
- 11N16
- 11N16A
- 11N17
- 11N18
- 11N18C
- 11N19
- 11N20A
- 11N22
- 11N22A
- 11N23
- 11N23C
- 11N23D
- 11N23M
- 11N24
- 11N26
- 11N26A
- 11N26B
- 11N26C
- 11N26C
- 11N26E
- 11N26H
- 11N26J
- 11N26JA
- 11N27
- 11N27A
- 11N28
- 11N28A
- 11N28B
- 11N28D
- 11N28E
- 11N29
- 11N30
- 11N31
- 11N32
- 11N33
- 11N34
- 11N36
- 11N37
- 11N37F
- 11N37G
- 11N37GW
- 11N38
- 11N40
- 11N40A
- 11N40B
- 11N40E
- 11N40G
- 11N40GA
- 11N40GB
- 11N40H
- 11N40K
- 11N40M
- 11N40R
- 11N42
- 11N43
- 11N46
- 11N46F
- 11N46H
- 11N46J
- 11N46K
- 11N46N
- 11N46NA
- 11N46P
- 11N47
- 11N47C
- 11N47D
- 11N50
- 11N53
- 11N74
- 11N99
- 11N99A
- 11N99AA
- 11N99E
- 11NY01
- 11NY02
- 11NY08
- 11NY27
- 11NY27A
- 11NY28
- 11NY29
- 11NY31
- 11NY32
- 11NY33
- 11NY34
- 11NY37
- 11NY74
- 12N23
- 12N23A
- 12N24
- 12N24A
- 12N24B
- 12N24C
- 12N25
- 12N25B

Roads Partially Closed Within Closed Area Perimeter:

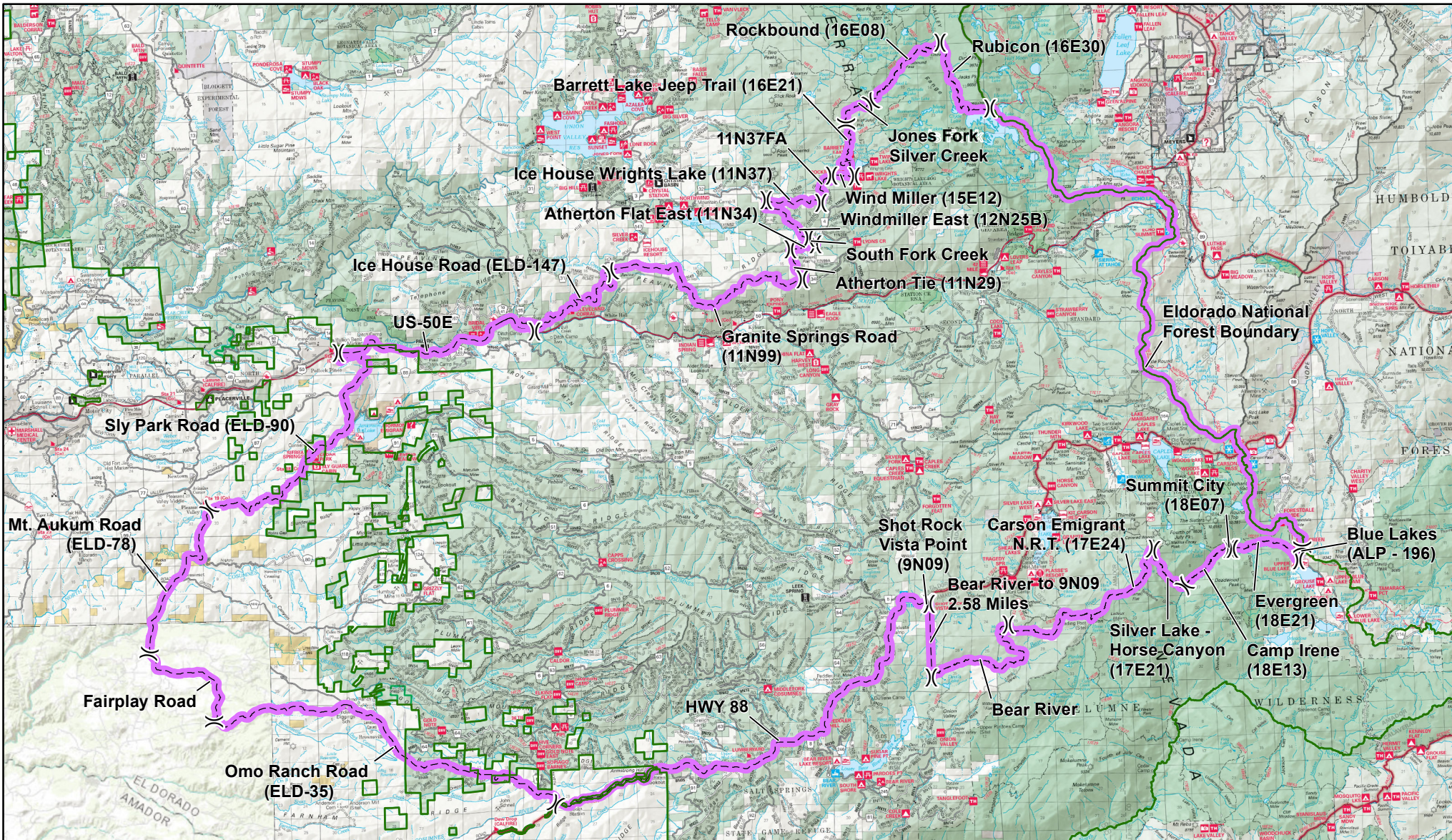
- 12N25
- 11N37
- 11N29
- 8N18

Closed Trails:

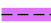


- | | | | | |
|---------|---------|---------|---------|---------|
| • 17E79 | • 17E22 | • 16E27 | • 14E33 | • 14E25 |
| • 17E78 | • 17E21 | • 16E21 | • 14E32 | • 13E40 |
| • 17E77 | • 17E19 | • 15E35 | • 14E31 | • 13E34 |
| • 17E74 | • 17E17 | • 14E41 | • 14E30 | • 13E33 |
| • 17E73 | • 17E16 | • 14E38 | • 14E29 | • 13E19 |
| • 17E32 | • 17E12 | • 14E36 | • 14E28 | |
| • 17E28 | • 16E33 | • 14E35 | • 14E27 | |
| • 17E24 | • 16E29 | • 14E34 | • 14E26 | |

Trails Partially Closed Within Closed Area Perimeter:

- Forest Trail No. 17E28



Order No. 03-21-18
Eldorado National Forest
Caldor Fire Closure
Exhibit C

-  Closure Boundary
-  Intersection
-  Eldorado National Forest Boundary

