



Resurrection Pass South Trail

Seward Ranger District, Chugach National Forest

(907) 288-3178

Recommended Uses

Difficulty

Public Use

Length (one way)



Easy to moderate

Moderate

16.7 miles (Devil's CR TR)

USGS Map

Trip Time (one way)

Recommended Season

Elevation Gain

Seward B8, C8

2-4 days

Year round

2200 feet

Trail Access

Mile 53.2 of the Sterling Highway. *Winter motorized use is allowed December 1 – April 30 when December is an odd year. When December is an even year motorized use is not allowed except for qualified subsistence users. Trail is closed to saddle/pack stock from April 1-June 30.*

Trail Grade/Condition

Level path, and some steep grades with switchbacks. Well maintained, may be muddy in places. Heavy snow in Resurrection Pass into late spring. Downed trees can impede travel year round.

Recreational Opportunities

Spruce/aspen at lower elevations grading into tundra with wildflowers. Day hike to Juneau Creek Falls, 4 ½ miles from trailhead. Trout Lake, Romig, Juneau Lake, Swan Lake, or Devil's Pass Cabins, by reservation only (7.7, 9, 9.5, 12.8, 16.7 miles from trailhead) offer potential multi-day trips. Several designated campsites located along trail. Travel the entire 38.4 mile trail for an extended trip, or travel the 16.7 miles to Devil's CR Trail and take this trail for 10 miles to the Seward Hwy (see Devil's trail sheet).

Surrounding trail, reddish-gray, dead trees killed by spruce bark beetle. 2019 wildfire between Trout and Juneau Lakes will have trees down across the trail more regularly for next couple of years. Wildlife includes moose, black and brown bears, wolves, marmots, Dall sheep, mountain goats, ptarmigan and grouse. Hunting for these species is permitted in designated seasons. Fishing for Dolly Varden, rainbow, grayling, in Juneau Creek; whitefish, rainbow/lake trout in Trout Lake; whitefish, burbot, grayling, rainbow/lake trout in Juneau Lake; and Dolly Varden, sockeye salmon, rainbow in Swan Lake. Sockeye spawn in Swan Lake outlet during mid-July and August. [Review Alaska Department of Fish and Game \(ADF&G\) hunting and fishing regulations.](#)

Special Considerations

Winter travel from the southern trailhead is not recommended due to steep, icy, narrow side hills. Alternate winter routes: At mile 47.7 of the Sterling Highway, turn onto Bean Creek Road (same road to Kenai Princess Lodge), travel 1 mile to Slaughter Ridge Rd. Travel ½ mile to small turn around for limited winter parking. Travel 1.3 miles to the Bean Creek trail, then go 1.8 miles to the jct. with Resurrection Pass Trail. Or use the West Juneau Rd. (better parking area for large vehicles with trailers) 100 feet west of the trailhead and follow it for 4 ½ miles to the junction with Res Pass Trail.

Use caution with bear and moose. Giardia (a microscopic parasite that can infect warm-blooded animals and humans) could be present in all open water sources, filter surface water before drinking. Winter travel may be hazardous due to avalanches, thin lake ice, and white out conditions above tree line. Winter travelers need to be able to evaluate avalanche and over-ice travel hazards. Be prepared for rapid weather changes. Remember to pack out your trash. You can contact a U.S. Forest Service office to receive more detailed information on safety precautions and Leave No Trace outdoor skills and ethics.

Cabin Reservations

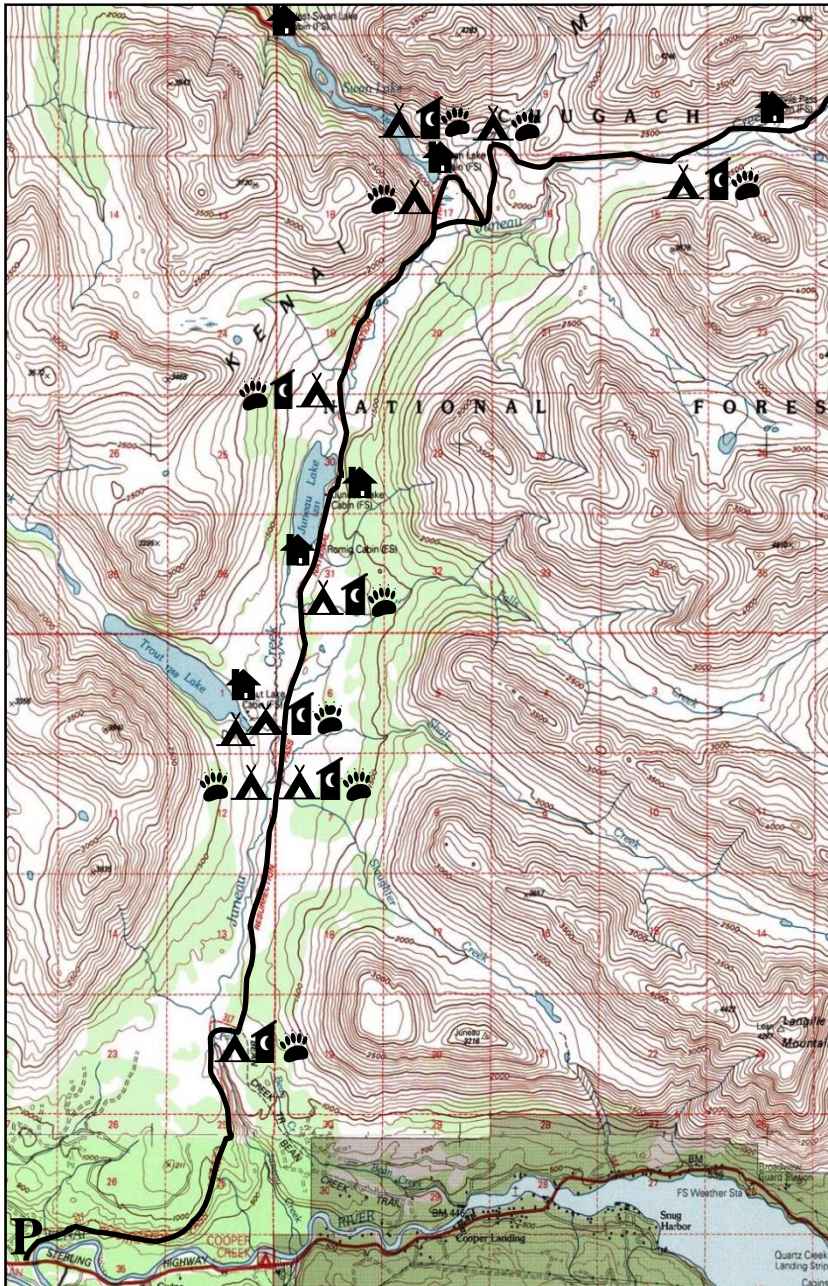
Occupancy of Forest Service cabins is by permit only. Reservations may be made up to 180 days in advance by calling 1-877-444-6777 or via the Internet at www.recreation.gov.



Resurrection Pass Trail

SOUTH SIDE

Seward Ranger District, Chugach National Forest (907) 288-3178



Map not to scale

Designated Campsites

From South to North

- Mile 4.3** N 60° 30' 42" W 149° 54' 08"
- Mile 6.9** N 60° 32' 37.1" W 149° 53' 3.6"
- Mile 7.3 on Trout Lake Cabin Trail**
650 ft in on right side, 700 ft in on left side
- Mile 8.4** N 60° 33' 49.6" W 149° 52' 36.7"
- Mile 10.3** N 60° 35' 21.1" W 149° 52' 14.1"
- Mile 12.6** N 60° 36' 49.7" W 149° 50' 35.9"
- Mile 12.7** N 60° 37' 1.8" W 149° 50' 46.1"
- Mile 13.5** N 60° 37' 3.5" W 149° 49' 49.2"
- Mile 15.6** N 60° 36' 53.3" W 149° 46' 34.9"

Cabins

- Trout Lake** Mile 7.3
N 60° 33' 06.9" W 149° 53' 37.6"
- Romig** Mile 9.0
N 60° 34' 13.4" W 149° 52' 32.5"
- Juneau Lake** Mile 9.5
N 60° 34' 34.3" W 149° 52' 19.3"
- Swan Lake** Mile 12.7
N 60° 36' 53.8" W 149° 50' 29.1"
- Devils Pass** Mile 16.7
N 60° 37' 17.5" W 149° 45' 07.9"

LEGEND

- Resurrection Pass Trail
- Trailhead Parking
- Forest Service Cabin
- Designated Campsite
- Bear Box (food storage)
- Backcountry Toilet