



Forest Order No. 03-21-19
Eldorado National Forest
Pacific Southwest Region
Caldor Fire Area, Road, and Trail Closure

Pursuant to 16 U.S.C. § 551 and 36 C.F.R. § 261.50(a) and (b), and to provide for public safety, the following acts are prohibited within the Eldorado National Forest. This Order is effective from October 15, 2021, through March 31, 2022.

1. Going into or being upon National Forest System lands within the Caldor Fire Closure Area, as described in Exhibit A and shown on Exhibit C. 36 C.F.R. § 261.52(e).
2. Being on a National Forest System road within the Caldor Fire Closure Area, including the National Forest System roads that comprise part of the Caldor Fire Closure Area boundary, as listed in Exhibit B and shown on Exhibit C. 36 C.F.R. § 261.54(e).
3. Being on National Forest System trails within the Caldor Fire Closure Area, including National Forest System trails that comprise part of the Caldor Fire Closure Area boundary, as listed in Exhibit B and shown on Exhibit C. 36 C.F.R. § 261.55(a).

Pursuant to 36 C.F.R. § 261.50(e), the following persons are exempt from this Order:

1. Any Federal, State, or local officer, or member of an organized rescue or fire-fighting force in the performance of an official duty.
2. Persons with Forest Service Permit No. FS-7700-48 (Permit for Use of Roads, Trails, or Areas Restricted by Regulation or Order), specifically exempting them from this Order.
3. Persons with a Federal Energy Regulatory Commission license or Forest Service special use authorization for an electric transmission line, an oil or gas pipeline, or a communications site may access their permit areas to conduct administrative functions to protect property and related assets.
4. Commercial recreation special-use permit holders and their customers are not exempt from this Forest Order, however, commercial recreation special-use permit holders and their customers may access their permitted areas under the terms and conditions of their permits to conduct administrative functions and to protect property and related assets. Recreation residence permit holders are not exempt from this Order.
5. Owners or lessees of land and residents of such private landholdings, to the extent necessary to access their land.

These prohibitions are in addition to the general prohibitions contained in 36 C.F.R. Part 261, Subpart A.

A violation of these prohibitions is punishable by a fine of not more than \$5,000 for an individual or \$10,000 for an organization, or imprisonment for not more than 6 months, or both. 16 U.S.C. § 551 and 18 U.S.C. §§ 3559, 3571, and 3581.

Executed in Placerville, California, this 14th day of October 2021.



JEFF MARSOLAIS
Forest Supervisor
Eldorado National Forest
Pacific Southwest Region

This Order supersedes Forest Order No. 03-21-18, dated September 29, 2021.

**Forest Order No. 03-21-19
Eldorado National Forest
Pacific Southwest Region
Caldor Fire Area, Road, and Trail Closure**

Exhibit A

The boundary of the Caldor Fire Closure Area begins at the intersection of California Highway 50 and Sly Park Road, then continues east along Highway 50 for 18 miles to Kyburz, CA, then continues 1.3 miles north from Kyburz, CA at Highway 50 to Forest Service Road No. 11N99, then continues east on Granite Springs Road (Forest Road No. 11N99) to its intersection with Forest Road No. 11N29, then continues north on Forest Road No. 1129 to its intersection with Forest Road No. 11N34, then continues 1 mile east on Forest Road No. 11N34, then continues northwest 0.36 miles crossing South Fork Silver Creek to its intersection with Forest Road No. 12N25B, then continues northwest on Forest Road No. 12N25B to its intersection with Forest Road No. 12N25, then continues north on Forest Road No. 12N25 to its intersection with Forest Road No. 11N37, then continues east on Forest Road No. 11N37 to its intersection with Forest Road No. 11N37F, then continues north on Forest Road No. 11N37F to its intersection with Forest Road No. 11N37FA, then continues northeast on Forest Road No. 11N37FA to its intersection with Forest Trail No. 15E12, then continues east on Forest Trail No. 15E12 to its intersection with Forest Road No. 11N26, then continues north on Forest Road No. 11N26 to its intersection with Forest Trail No. 16E08, then continues north on Forest Trail No. 16E08 to its intersection with Forest Trail No. 16E17, then continues east on Forest Trail No. 16E17 to its intersection with Forest Trail No. 16E12, then continues east on Forest Trail No. 16E12 to its intersection with the Desolation Wilderness Boundary, then continues south and east along the Desolation Wilderness Boundary to its intersection with the Eldorado National Forest Boundary at Talking Mtn, then continues south along the Eldorado National Forest Boundary to its intersection with Highway 88, then continues west on Highway 88 to its intersection with Forest Trail No. 17E22, then continues south on Forest Trail No. 17E22 to its intersection with Forest Trail No. 17E21, then continues north on Forest Trail No. 17E21 to its intersection with Highway 88, then continues west on HWY 88 to its intersection with Omo Ranch Road, then continues northwest on Omo Ranch Road to its intersection with Fairplay Road, then continues northwest on Fairplay Road to its intersection with Mt. Aukum Road, then continues north on Mt. Aukum Road to its intersection with Sly Park Road, then continues north on Sly Park Road back to the starting point at its intersection with Highway 50, as shown on Exhibit C.

Forest Order No. 03-21-19
Eldorado National Forest
Pacific Southwest Region
Caldor Fire Area, Road, and Trail Closure

Exhibit B

Closed Roads:

08N23	08N55H	09N11A	09N22B	09N34D	09N55	09N95	10N08B
08N23A	08N55W	09N14	09N22D	09N34G	09N55E	09N95B	10N11
08N23B	08N56	09N14A	09N23	09N35	09N56	09N96	10N11A
08N23C	08N57	09N14H	09N23A	09N36	09N57	09N96A	10N13
08N26	08N57C	09N14K	09N24	09N38	09N58C	09N96B	10N13D
08N26B	08N57D	09N14L	09N24A	09N38A	09N59	09N96C	10N14
08N26C	08N58	09N14M	09N24B	09N38B	09N60	09NY07	10N14A
08N27	08N58B	09N14N	09N24C	09N38C	09N61	09NY08	10N14G
08N31	08N58C	09N14O	09N25	09N39	09N62	09NY08B	10N14H
08N31A	08N58D	09N14W	09N25B	09N40	09N63	09NY12	10N14HA
08N31B	08N60	09N15	09N25D	09N40A	09N65	09NY14	10N14HB
08N37	08N66	09N15A	09N25E	09N40B	09N65A	09NY14A	10N16
08N42	08N66A	09N15B	09N25F	09N41	09N66	09NY21	10N16A
08N42C	08N67	09N16	09N25G	09N41A	09N67	09NY22	10N16B
08N42E	08N72	09N17	09N30	09N42	09N67A	09NY26	10N16BA
08N42F	08N72C	09N17A	09N30A	09N42A	09N68	09NY26A	10N16BB
08N43	08N76	09N17B	09N30C	09N42C	09N69	09NY32	10N16BC
08N43A	08N77	09N17C	09N30H	09N43	09N71	09NY32C	10N16C
08N44	08N78	09N17D	09N30J	09N44	09N72	09NY33	10N16D
08N45	08N79	09N17H	09N30JW	09N44A	09N73	09NY33A	10N16E
08N46	08N81	09N17J	09N30K	09N45	09N75	09NY33C	10N22
08N46A	08N87	09N17K	09N30L	09N46	09N76	09NY33D	10N23
08N47	08N91	09N17L	09N30M	09N46D	09N76B	09NY34	10N23A
08N47A	08N92	09N17M	09N30N	09N46J	09N76C	09NY37	10N23B
08N48	08N92A	09N17MS	09N30P	09N47	09N77	09NY40	10N25
08N48A	09N02	09N17Q	09N30R	09N47A	09N77A	09NY43	10N25A
08N49	09N02A	09N17R	09N30RA	09N48	09N78	09NY46	10N25W
08N49B	09N06	09N17S	09N30T	09N49	09N78A	09NY47	10N26
08N51	09N07	09N17T	09N30U	09N49B	09N79	09NY48	10N26B
08N54	09N10	09N17U	09N30V	09N49E	09N79A	10N04	10N26C
08N54B	09N10D	09N17W	09N30W	09N49H	09N80	10N04A	10N26D
08N55	09N10E	09N17Z	09N31	09N50	09N84	10N04B	10N27
08N55A	09N10G	09N18	09N32	09N50B	09N86	10N06	10N28
08N55C	09N10H	09N19	09N33	09N51	09N87	10N07	10N28A
08N55E	09N10K	09N20	09N34	09N53	09N92	10N08	10N28C
08N55F	09N11	09N22	09N34C	09N54	09N93	10N08A	10N28D

10N28F	10N42	10N59W	10N94A	11N16	11N40A	11NY31
10N28W	10N42A	10N61	10N95	11N16A	11N40B	11NY32
10N29	10N43	10N61C	10N98	11N17	11N40E	11NY33
10N29B	10N43C	10N62	10N98B	11N18	11N40G	11NY34
10N29C	10N44	10N62C	10N99	11N18C	11N40GA	11NY37
10N30	10N46	10N62D	10NY02	11N19	11N40GB	11NY74
10N31	10N46G	10N63	10NY04	11N20A	11N40H	12N23
10N31A	10N46J	10N64	10NY04E	11N22	11N40K	12N23A
10N31B	10N46L	10N64W	10NY05	11N22A	11N40M	12N23AB
10N32	10N46M	10N65	10NY06	11N23	11N40R	12N24
10N32A	10N47	10N65A	10NY06B	11N23C	11N43	12N24A
10N32B	10N47A	10N66	10NY07	11N23D	11N46	12N24B
10N33	10N47B	10N67	10NY09	11N23M	11N46F	12N24C
10N33A	10N47C	10N72	10NY10	11N24	11N46H	12N25
10N34	10N50	10N75	10NY12	11N26	11N46J	12N25B
10N34D	10N50B	10N75A	10NY13	11N26A	11N46K	
10N35	10N50C	10N76	10NY16	11N26B	11N46N	
10N35B	10N50G	10N82	10NY21	11N26C	11N46NA	
10N36	10N50H	10N83	10NY22	11N26E	11N46P	
10N38	10N50M	10N83B	10NY26	11N26H	11N47	
10N39	10N50R	10N83C	10NY26A	11N27	11N47C	
10N39D	10N52	10N83J	10NY32	11N27A	11N47D	
10N39E	10N52A	10N83K	11N01	11N28	11N50	
10N39F	10N55	10N83M	11N02	11N28A	11N53	
10N40	10N55E	10N83N	11N02A	11N28B	11N74	
10N40C	10N55H	10N83R	11N02W	11N28D	11N99	
10N40D	10N55HS	10N83S	11N06	11N28E	11N99A	
10N40E	10N55K	10N83W	11N06A	11N30	11N99AA	
10N40G	10N55P	10N84	11N09	11N31	11N99E	
10N40GS	10N55R	10N87	11N09A	11N32	11NY01	
10N40M	10N55S	10N91	11N10	11N33	11NY02	
10N40N	10N55W	10N91A	11N10A	11N34	11NY08	
10N40R	10N57	10N91B	11N11	11N36	11NY27	
10N40T	10N58	10N91D	11N13	11N37G	11NY27A	
10N41	10N59	10N91E	11N14	11N37GW	11NY28	
10N41B	10N59C	10N94	11N15	11N40	11NY29	

Roads Partially Closed (Closed Within the Caldor Fire Closure Area):

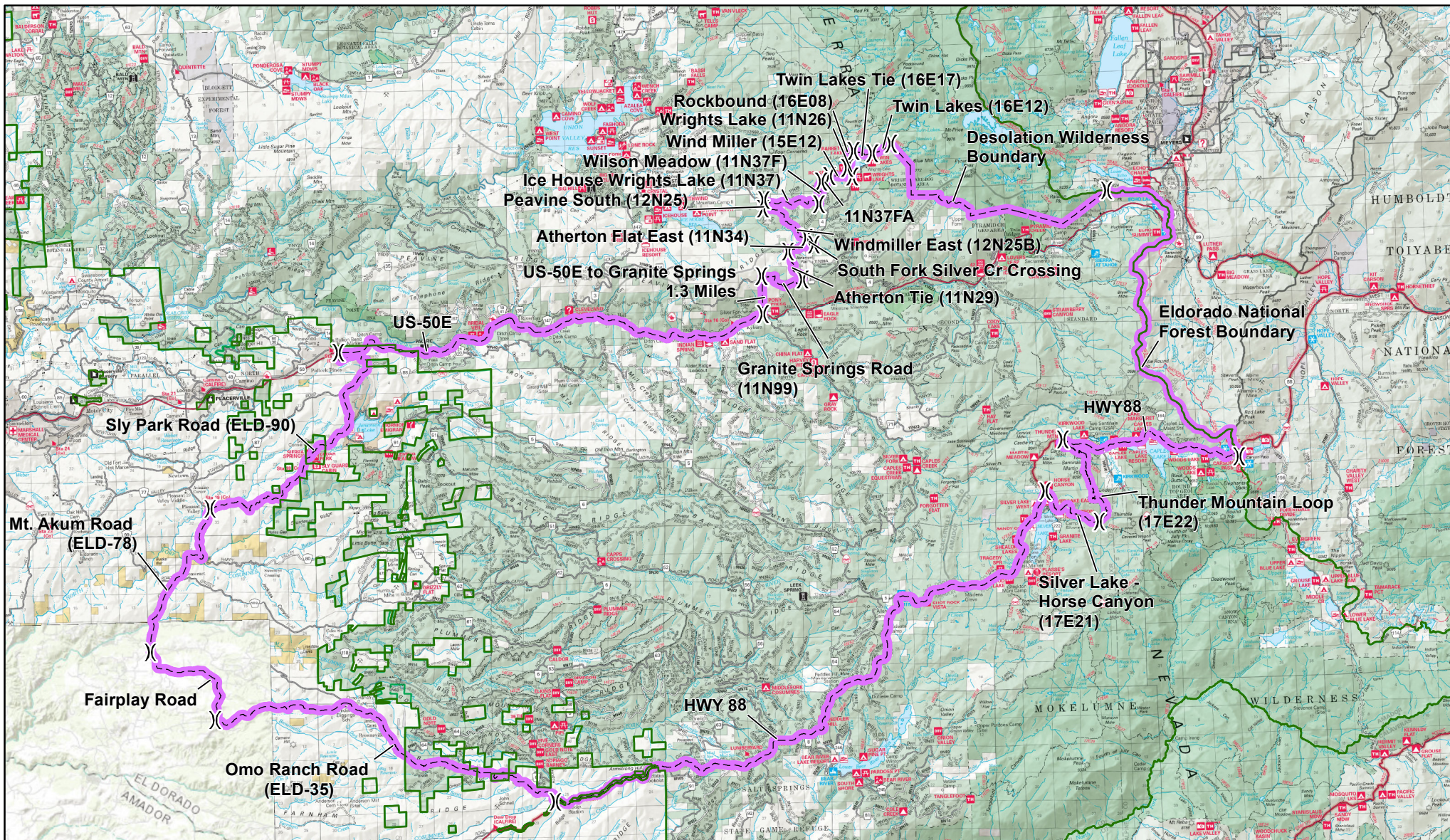
11N06F
11N26
11N29
11N34
11N37
11N99

Closed Trails:

13E04	14E33	17E16
13E07	14E34	17E17
13E08	14E35	17E20
13E09	14E36	17E22
13E19	14E38	17E25
13E33	14E41	17E46
13E34	15E12	17E49
13E40	15E35	17E51
14E15	15E40	17E52
14E16	16E12	17E53
14E17	16E14	17E57
14E20	16E18	17E63
14E25	16E27	17E71
14E26	16E29	17E73
14E27	16E33	17E74
14E28	17E04	17E75
14E29	17E12	17E77
14E30	17E13	17E78
14E31	17E14	
14E32	17E15	

Trails Partially Closed (Closed Within the Caldor Fire Closure Area):

13E19
16E08
16E12
16E13
16E15
17E21
17E24
17E41



Order No. 03-21-19 **Eldorado National Forest** **Caldor Fire Closure** **Exhibit C**

- Closure Boundary
- X Intersection
- Eldorado National Forest Boundary

