



UNITED STATES DEPARTMENT OF AGRICULTURE
FOREST SERVICE
UMPQUA NATIONAL FOREST
Roseburg, OR
ORDER NO. 06-15-00-21-454

**EMERGENCY FIRE AREA CLOSURE
ROUGH PATCH, JACK, ARCHIE CREEK, DEVIL'S KNOB FIRE AREAS**

Pursuant to 16 U.S.C. § 551 and 36 CFR § 261.50(b), the following acts are prohibited upon roads and trails within the Umpqua National Forest as described below and shown in Exhibit A. This Order will be effective beginning October 22, 2021, through May 16, 2022, unless rescinded sooner. This Order supersedes Closure Order No. 06-15-02-21-453.

PROHIBITIONS:

1. Being on the road. [36 CFR § 261.54(e)]
2. Being on a trail. [36 CFR § 261.55(a)]

CLOSED ROAD SYSTEMS:

- Forest Service Road (FSR) 2300-650 is closed
- FSR 3828 is closed from the junction with FSR 38 to the junction with FSR 2358
- FSR 3829 is closed from the junction with FSR 38 to the junction with FSR 2212
- FSR 3818 is closed from the junction with FSR 38 to the junction with FSR 5850
- FSR 3850-200 and all 3850-200 spur roads are closed
- FSR 3850-300 and all 3850-300 spur roads are closed
- FSR 4713 is closed from the junction with State Highway 138E to the junction with FSR 4713-300
- FSR 4713-100 is closed from the junction with FSR 4713 to FSR 4760
- FSR 2813 is closed from the junction with FSR 28 to the junction with FSR 2792
- FSR 2719 is closed from the junction with FSR 28 to the junction with FSR 2719-617
- FSR 27 is closed from FSR 28 to the junction with FSR 2781
- FSR 28 is closed from the junction with FSR 2813 to the junction with FSR 29
- FSR 2929 is closed from the junction with FSR 29 to the junction with FSR 2980
- FSR 2980 is closed from the junction with FSR 2929 to the junction with FSR 29

CLOSED TRAIL SYSTEMS:

- Forest Service Trail (FST) 1513 is closed
- FST 1518 is closed
- FST 1502 is closed
- FST 1414 (North Umpqua Trail) is closed from the forest boundary in T26S R1W Section 19, to Steamboat Inn, and again from Mott Bridge to Horseshoe Bend

EXEMPTIONS:

Pursuant to 36 CFR § 261.50(e), the following persons are exempt from this order:

1. Persons with Forest Service Permit No. FS-7700-48 (Permit for Use of Roads, Trails, or Areas Restricted by Regulation or Order), specifically exempting them from this Order.
2. Any Federal, State, or local officer, or member of any organized rescue or fire fighting force in the performance of an official duty.

This prohibition is in addition to the general prohibitions in 36 C.F.R. Part 261, Subpart A.

Violations of this prohibition are punishable by a fine of not more than \$5,000 for an individual or \$10,000 for an organization, or imprisonment for not more than 6 months, or both (16 U.S.C. § 551; 18 U.S.C. §§ 3551, 3559, 3571, and 3581).

Executed in Roseburg, Oregon, October 22, 2021.

ALICE CARLTON Digitally signed by ALICE
CARLTON
Date: 2021.10.22 14:17:04 -07'00'

Alice Carlton Date
Forest Supervisor
Umpqua National Forest

Closure Exhibit A - South Half

Closure Number. 06-15-00-21-454

Umpqua National Forest 541-957-3200

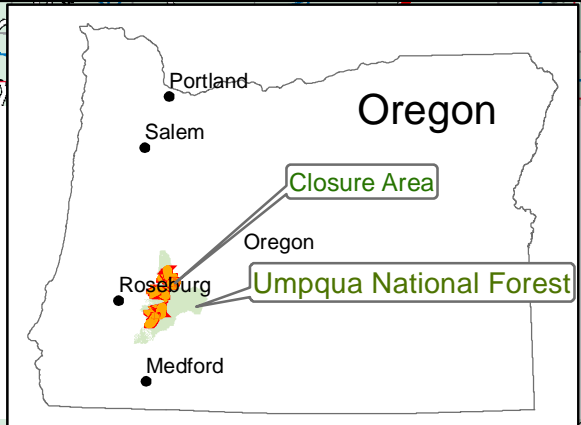
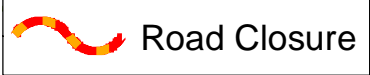


R. 2 W.

R. 1 W.

R. 1 E.

R. 2 E.



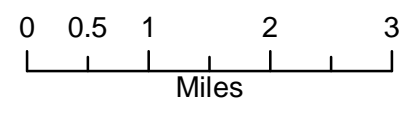
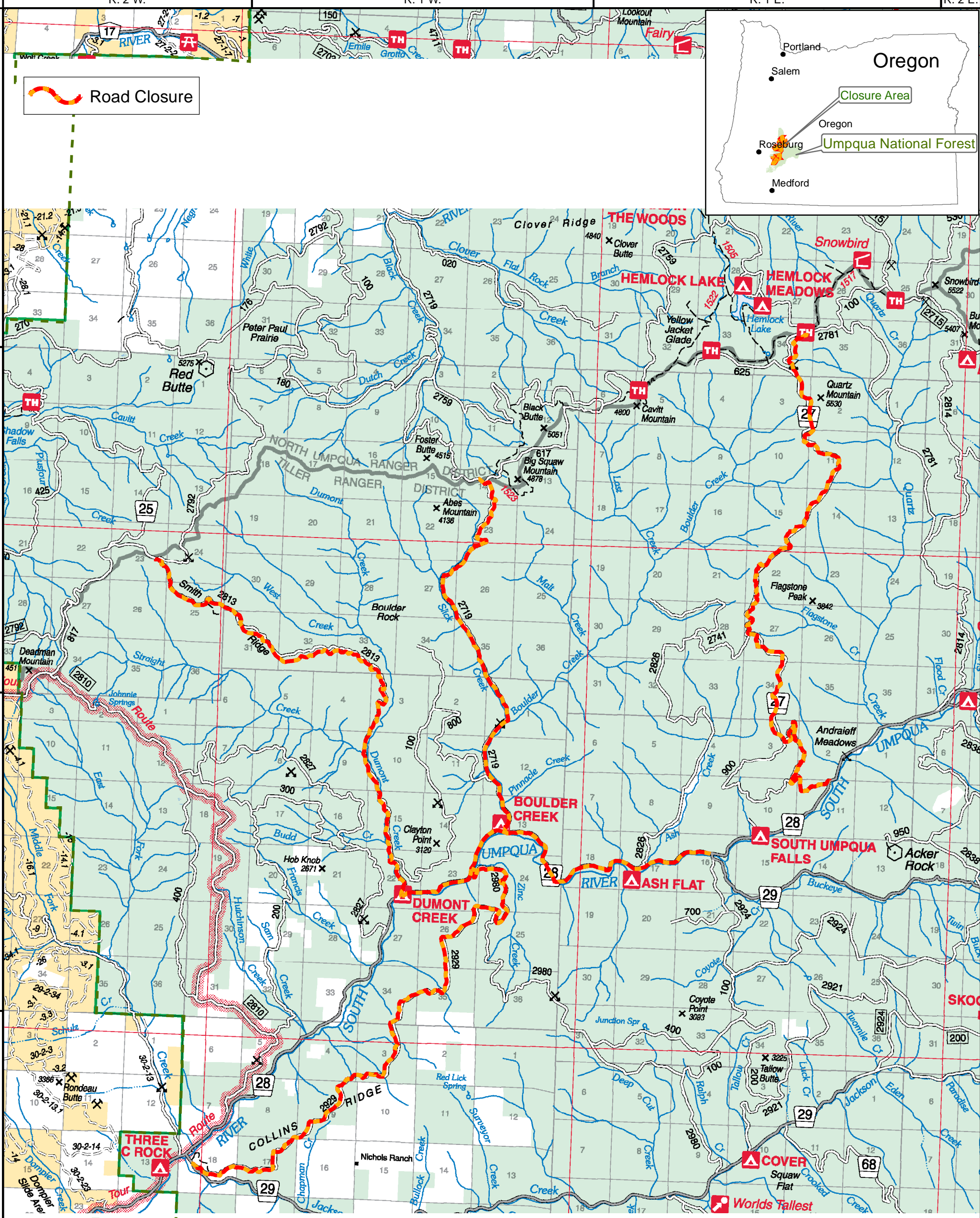
T. 27 S.

T. 28 S.

T. 29 S.

T. 30 S.

T. 31 S.



R. 2 W.

R. 1 W.

R. 1 E.

R. 2 E.