



Forest Service  
U.S. DEPARTMENT OF AGRICULTURE

# Environmental Assessment for Travel Management

---

Shoshone National Forest

Wind River Ranger District

Virtual Public Meeting

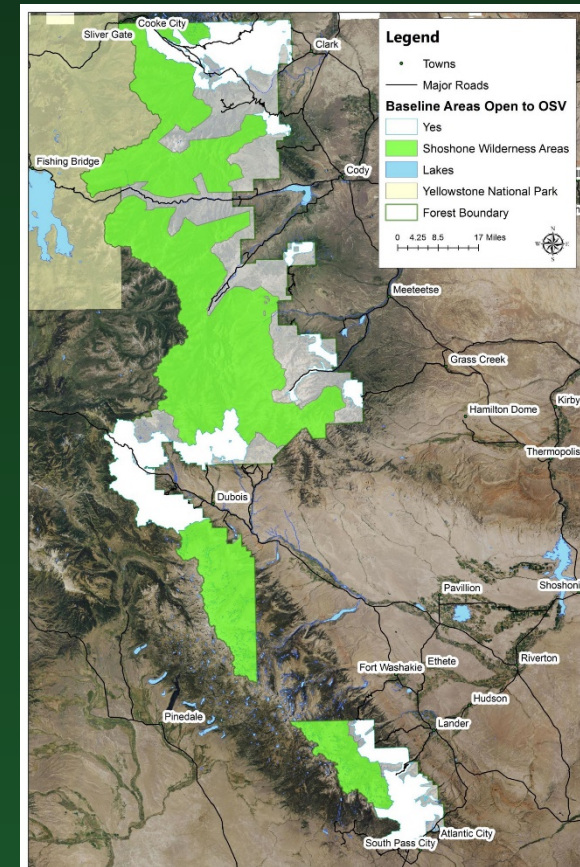
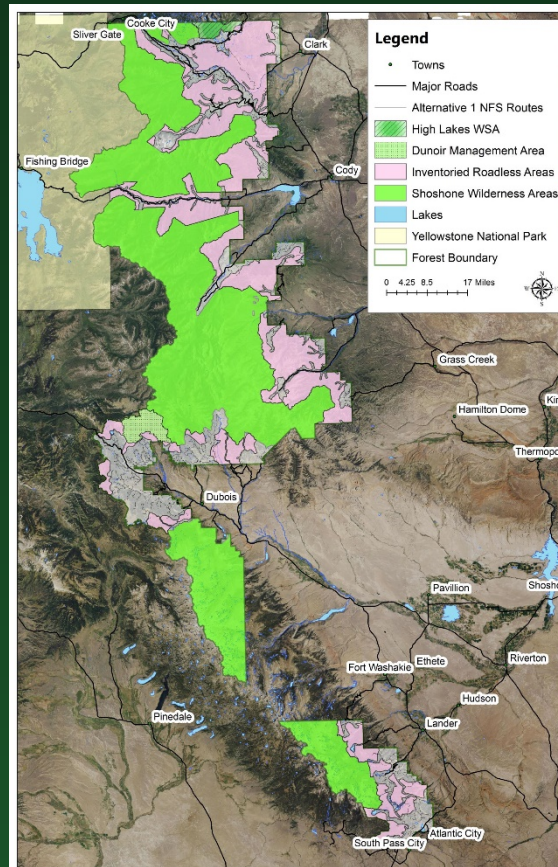
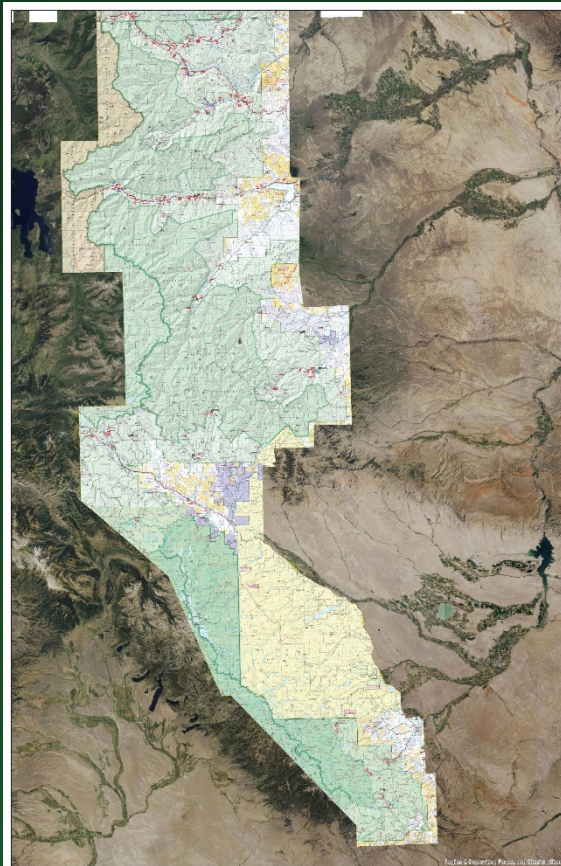
November 3, 2021

# Agenda

---

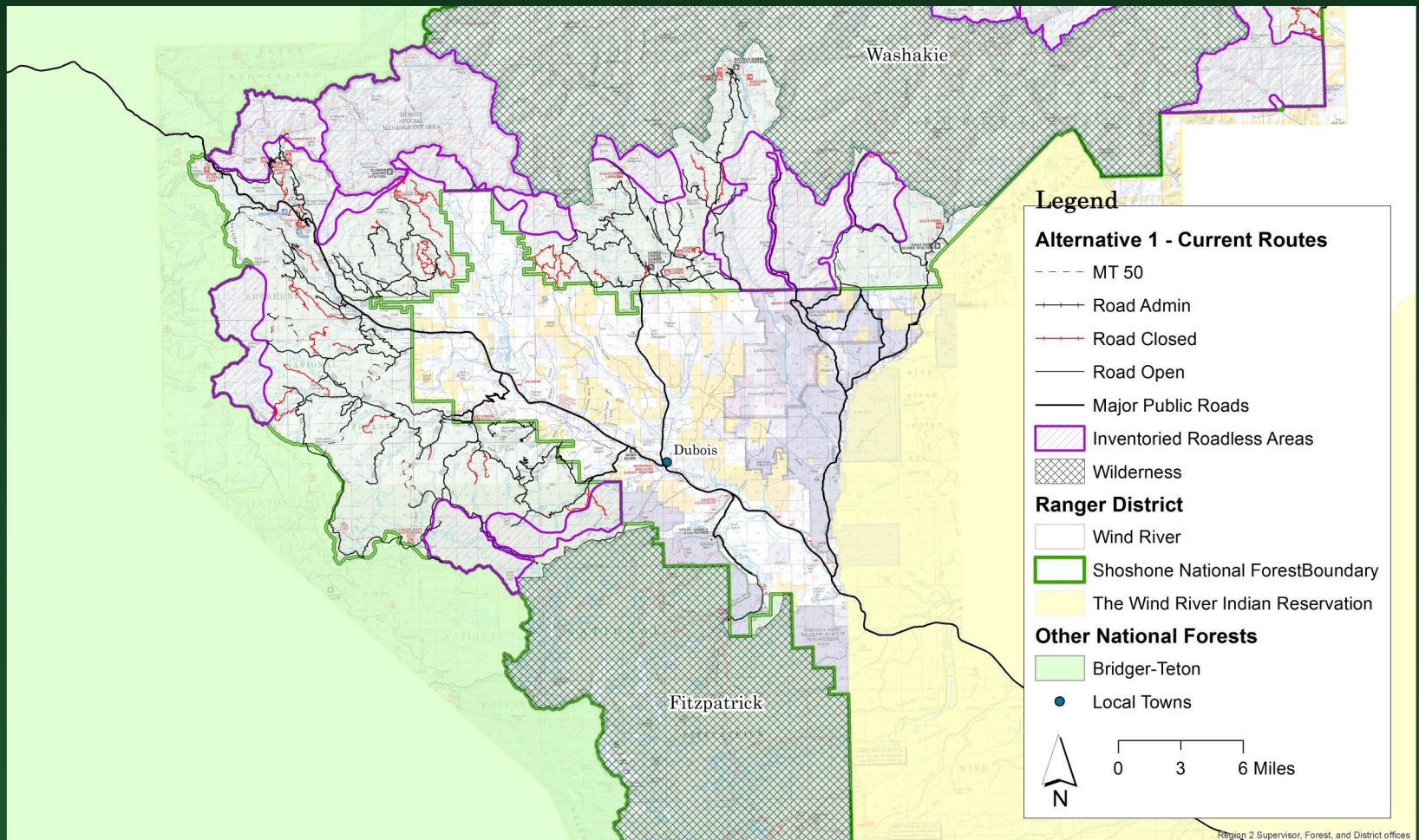
- Welcome, layout ground rules, agenda – Kristie Salzmann, Shoshone NF Public Affairs Officer
- Travel Management Planning process – Lisa Timchak, Shoshone NF Supervisor
- Forestwide analysis effort – Mark Foster, Shoshone NF Environmental Coordinator
- District specific maps – Jeff von Kienast, District Ranger for the Wind River District
- Question & Answer portion
- Next steps

# Forest-wide Analysis: Foundation



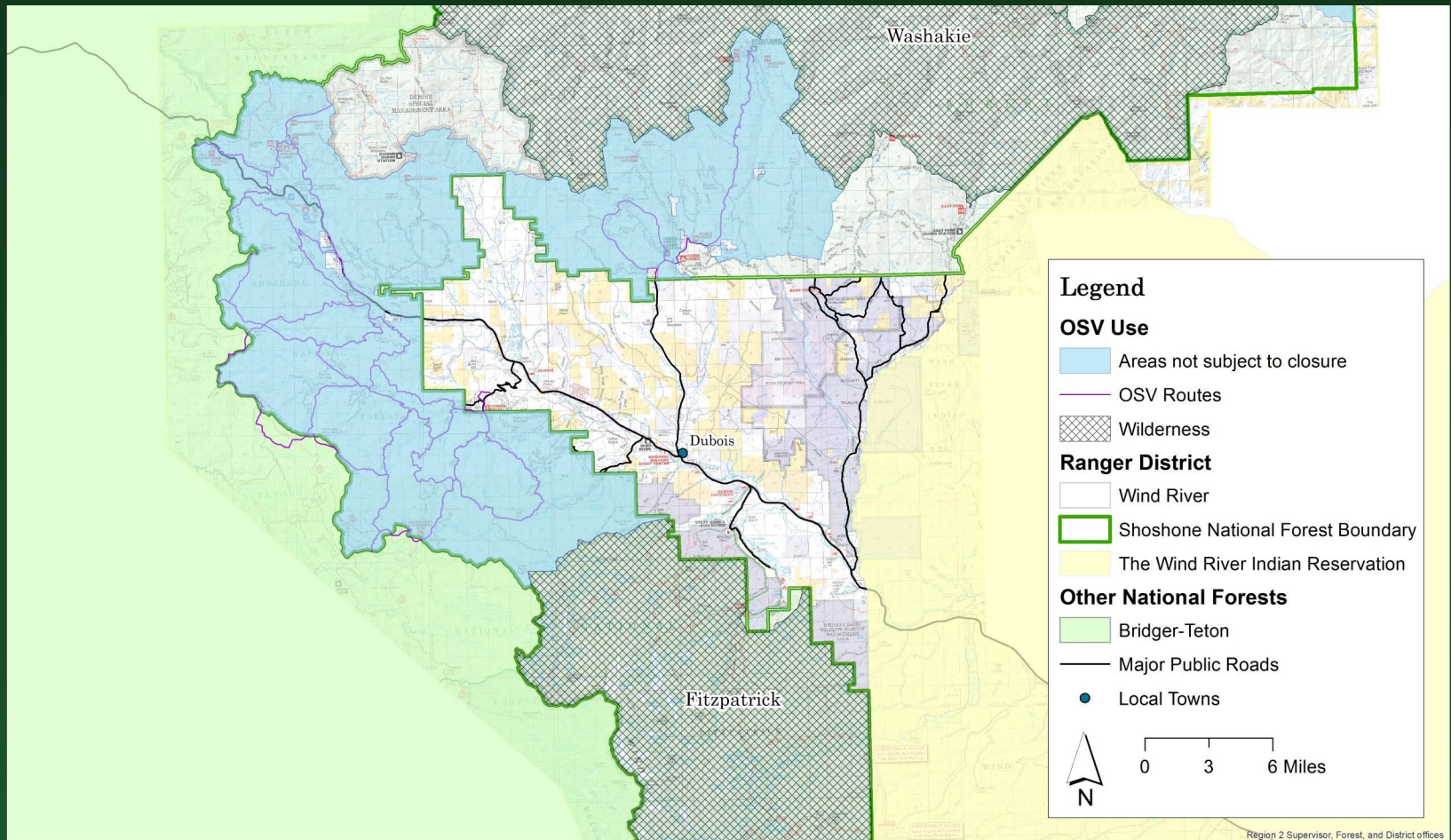


# Wind River: Wheeled Foundation





# Wind River: OSV Foundation



# Forest-Wide Analysis: Getting to PA

---

## Forest-Wide

- Consider public comments from 2020
- Consider input from key partners
- Review TAP / TAR
- Review Seasonal Closures
- Revise as Necessary Analysis

## Wind River Specific

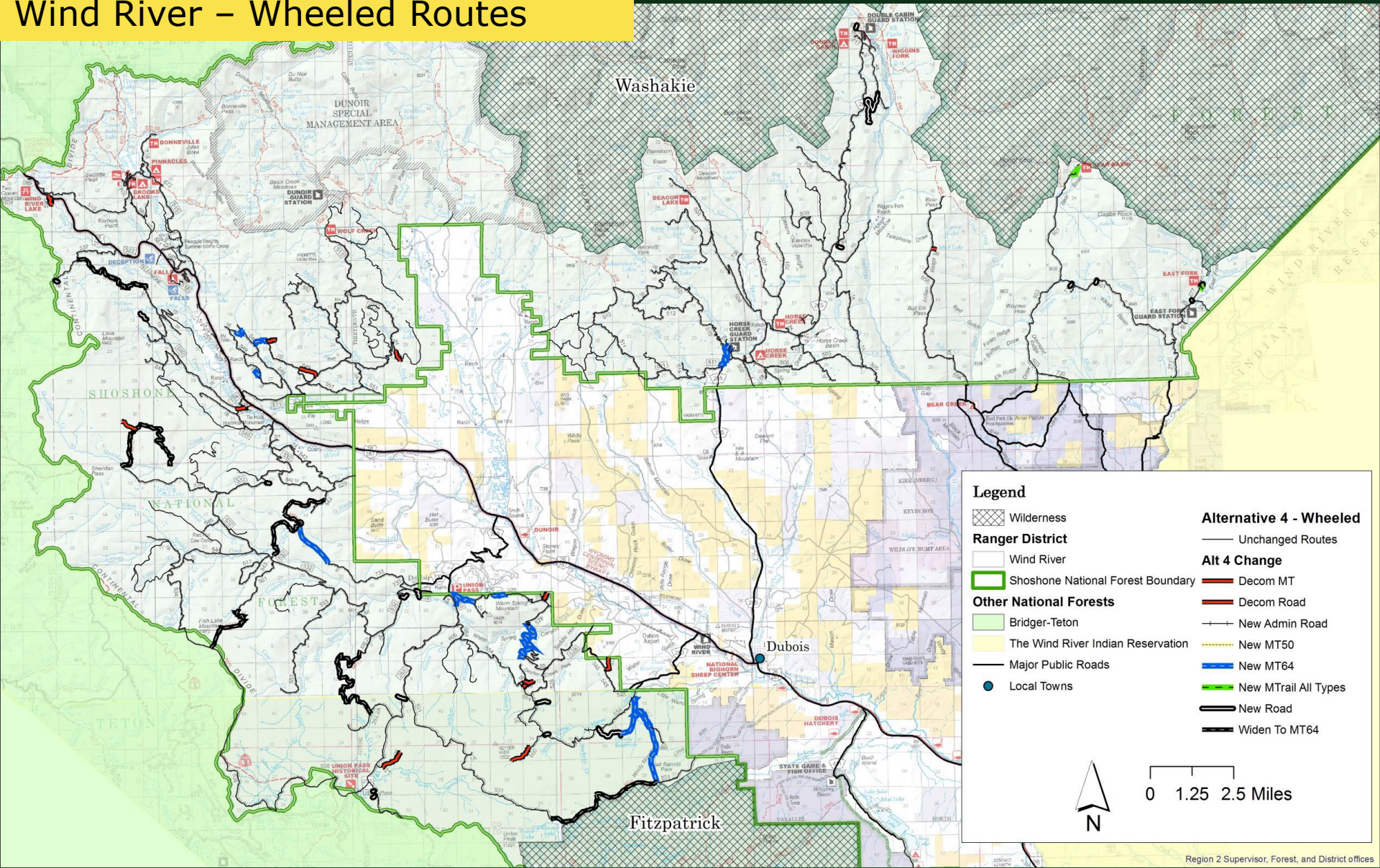
- Examined Program Needs
  - Dropped the WR-86 Administrative Road Proposal
- Examined Motorized Trail Opportunities
  - Long Creek (Conversion / +)
  - Brent & Burroughs (Conversion)
  - Windy Ridge (+)
  - No Mans (+)
- Incorporated Pinnacles & Deception OSV Closure
- Examined and Maintained OSV Season Dates:
  - November 1 to June 15

# WR Statistics – Wheeled Designated System

	Wind River RD
Designated (Open) FS Roads	265
Closed Roads but Open for Administrative Use	4
Closed Roads (not open to anyone)	68
Total Road System	<b>337</b>
(Alt 1)	378
New Designated Road (miles shown on MVUM)	6
Subtotal Additions to Designated Roads	6
Decommission Road	5
New Admin Road Closure (existing road, Not on MVUM)	0
Road Converted To Designated Motorized Trail 64"	8
Road Converted To MT, Open to All Vehicles	30
Subtotal Subtractions to Designated Roads	43
Net Change to the Designated (Open) Road System	-38
50" ORV Motorized Trail	0
64" ORV Motorized Trail	42
Single Track Motorized Trail	0
Motorized Trail, Open To All	30
Subtotal Designated MT System	72
(Alt 1)	22
New Constructed MT	9
Routes Converted to MT	41
Subtractions to Designated Trail System (Decommission)	0
Subtotal Additions to Designated Trail System	50
Total Designated Motorized Route System	<b>337</b>
(Alt 1)	324
Net Change to Designated Motorized Route System	13
Percentage Change to Designated Route System	4%

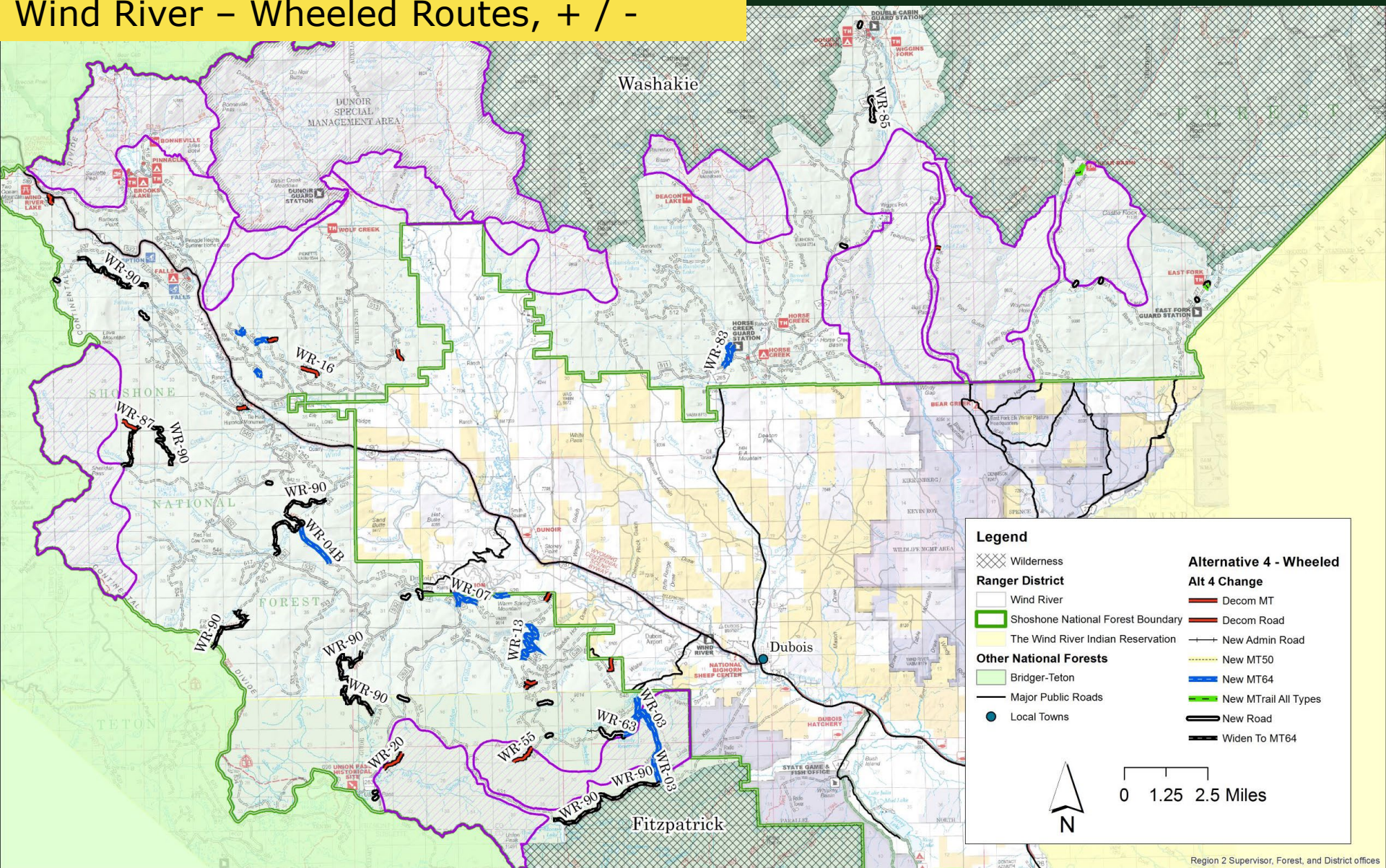


# Wind River – Wheeled Routes



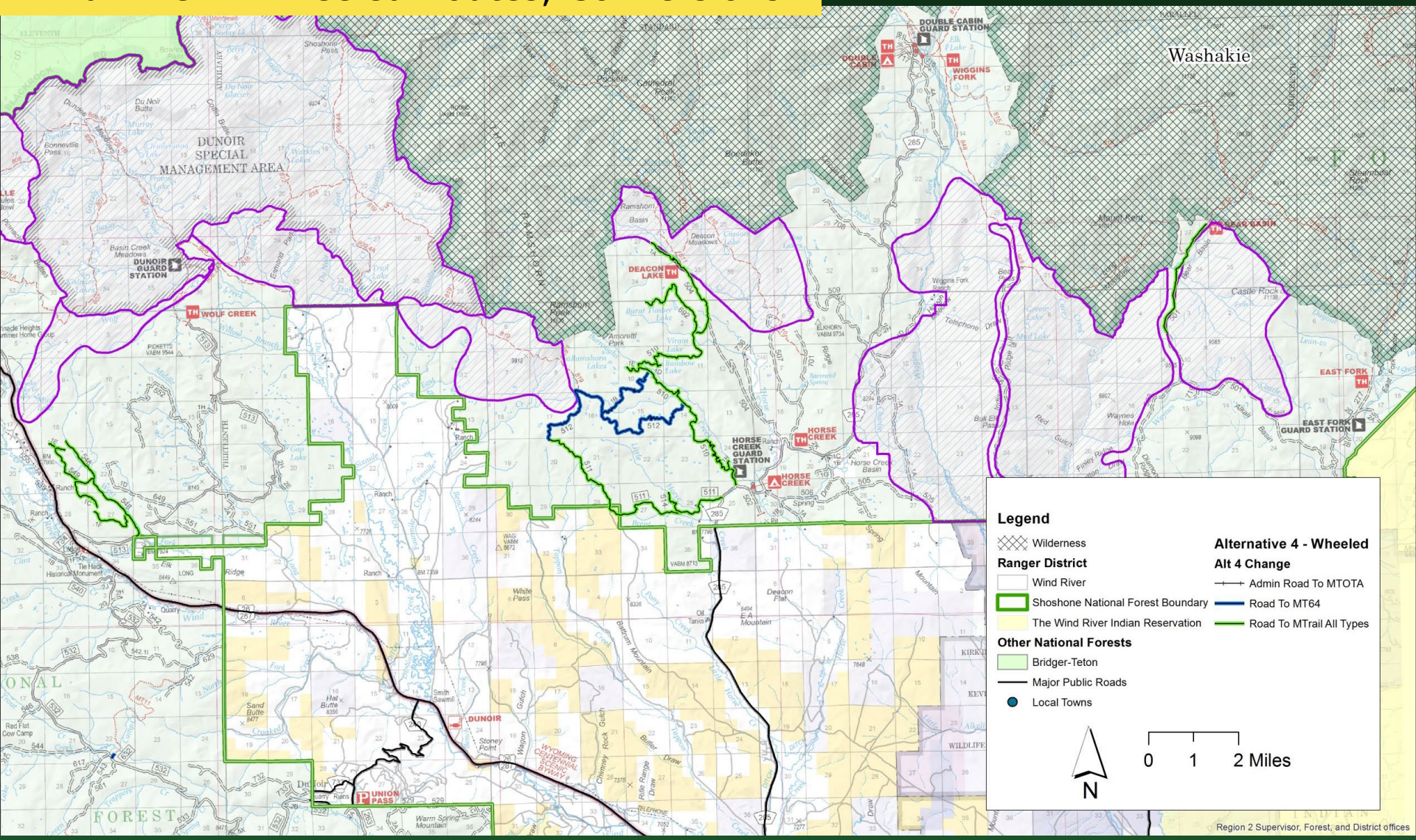


# Wind River – Wheeled Routes, + / -





# Wind River – Wheeled Routes, Conversions

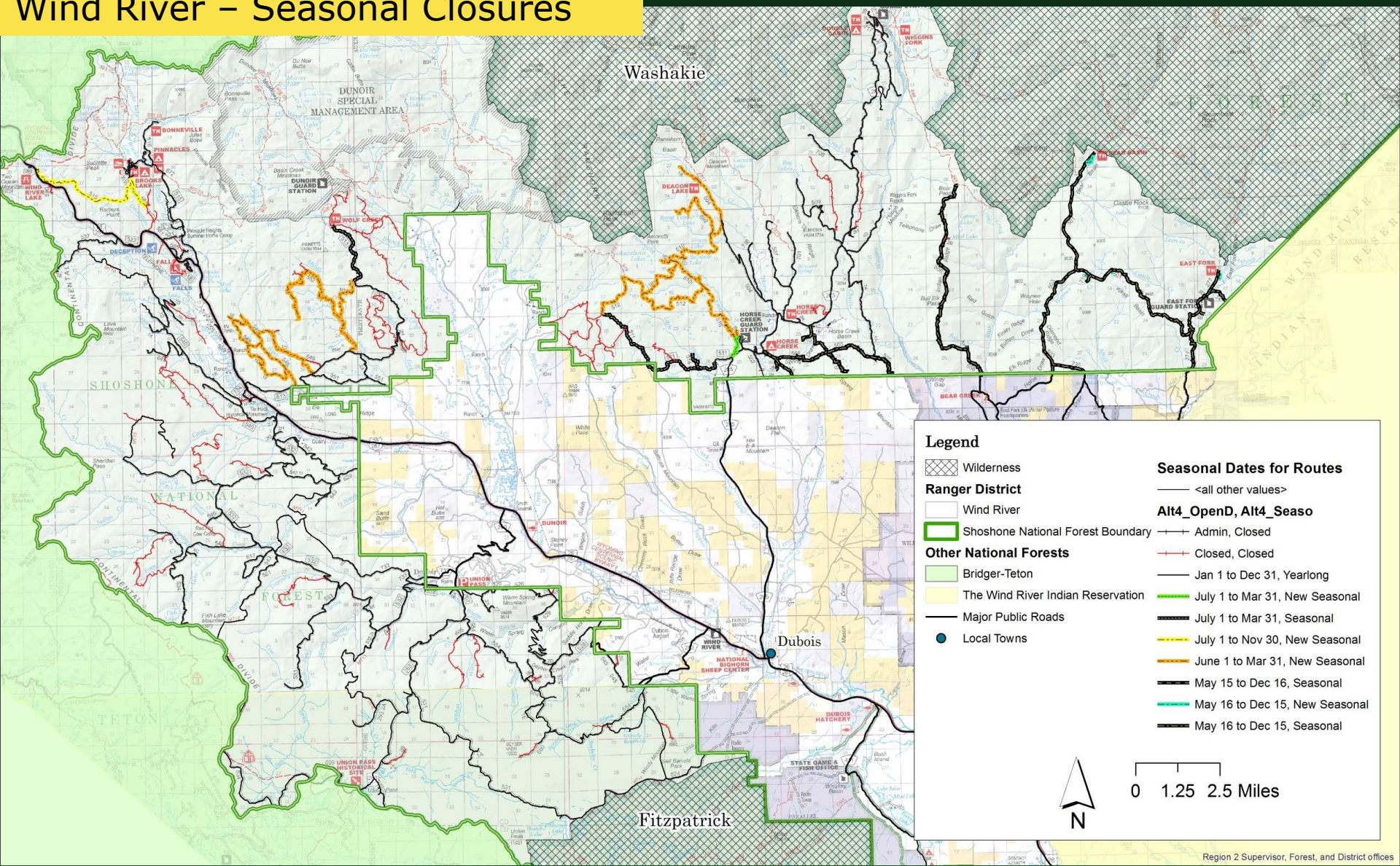




© 2006 The Authors  
Journal compilation © 2006 Blackwell Publishing Ltd

	Wind River RD
Existing Seasonally Restrict Designated Roads	44
Altered Dates on Seasonal Roads	0
New Seasonally Restricted Designated Roads	16
Dropped Seasonal Restricted Roads	0
Seasonal Restricted Roads Under other Categories (Trail, Admin, Decommission)	-1
Subtotal Seasonal Restricted Designated Road System	59
(Alt 1)	44
<b>Difference</b>	15
Existing Seasonal Designated Trails	0
New Seasonal Designated Motorized Trails (50 & 64)	10
New Seasonal Designated Motorized Trails (open to all)	21
Subtotal Seasonal Designated Trail System	31
<b>Total Seasonal Designated Motorized System</b>	90
(Alt 1)	44
<b>Difference (mileage)</b>	46
<b>Difference (percentage)</b>	104%

# Wind River – Seasonal Closures



**Legend**

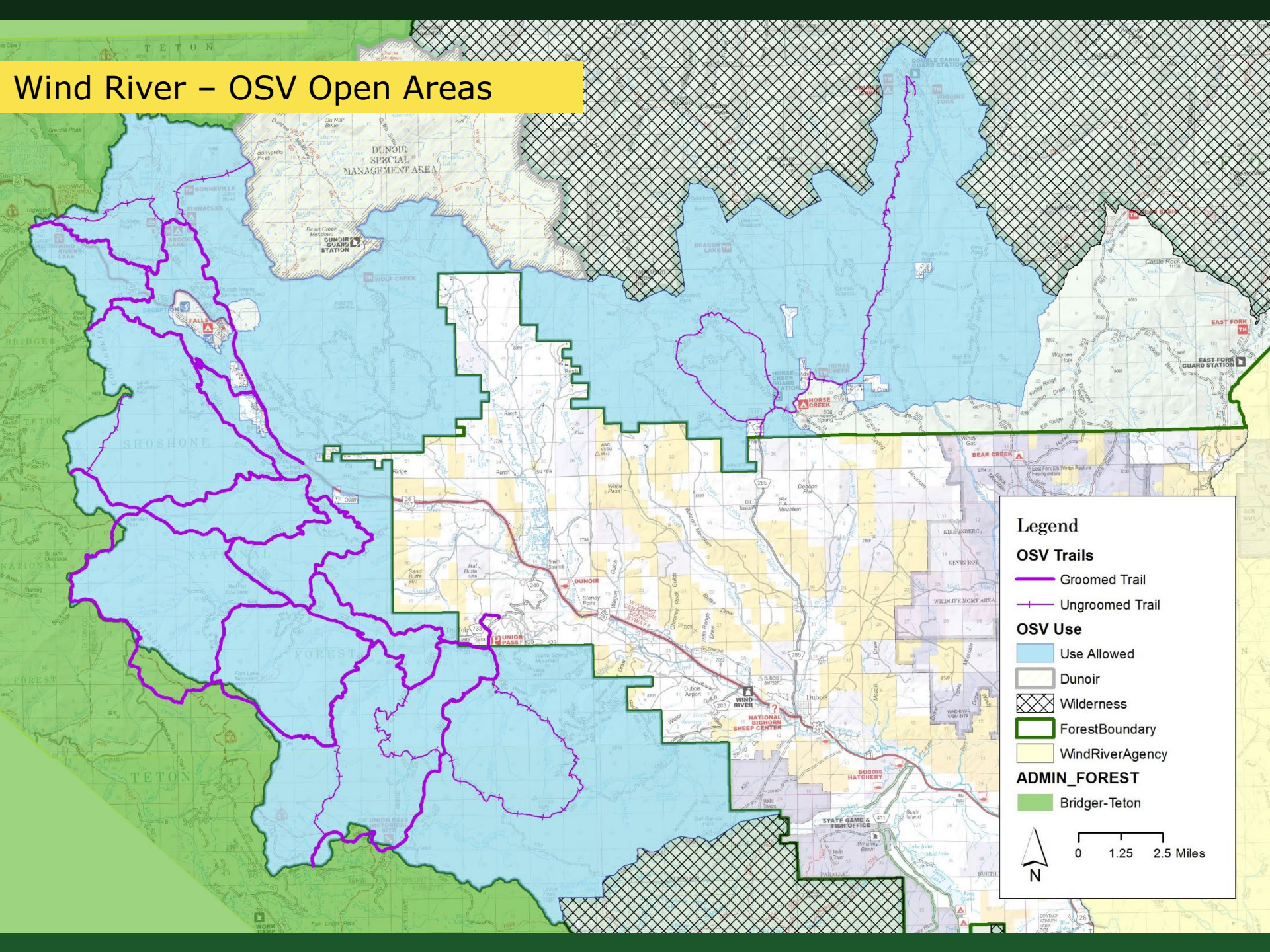
- Wilderness
  - Ranger District
    - Wind River
    - Shoshone National Forest Boundary
  - Other National Forests
    - Bridger-Teton
    - The Wind River Indian Reservation
  - Major Public Roads
  - Local Towns
- Seasonal Dates for Routes**
- <all other values>
  - Alt4\_OpenD, Alt4\_Seaso
  - Admin, Closed
  - Closed, Closed
  - Jan 1 to Dec 31, Yearlong
  - July 1 to Mar 31, New Seasonal
  - July 1 to Mar 31, Seasonal
  - July 1 to Nov 30, New Seasonal
  - June 1 to Mar 31, New Seasonal
  - May 15 to Dec 16, Seasonal
  - May 16 to Dec 15, New Seasonal
  - May 16 to Dec 15, Seasonal

# WR Statistics – OSV Management

	Wind River RD
State Snowmobile Trails - Groomed	114
State Snowmobile Trails - Ungroomed	54
Subtotal Miles	<b>168</b>
New FS Snowmobile Trails - Ungroomed (miles)	5
<b>Total FS Snowmobile Trail System</b>	<b>173</b>
Area Open to Motorized Travel (acres)	201,819
New Area Closures to Motorized Travel (acres)	1,479
Percent of District Open to OSVs	37
<b>Total Available Area of Motorized Travel (acres)</b>	<b>200,340</b>
<i>Alt 1 (acres)</i>	<i>201,819</i>
Season Dates	
Open	November 1
Close	June 15



# Wind River – OSV Open Areas

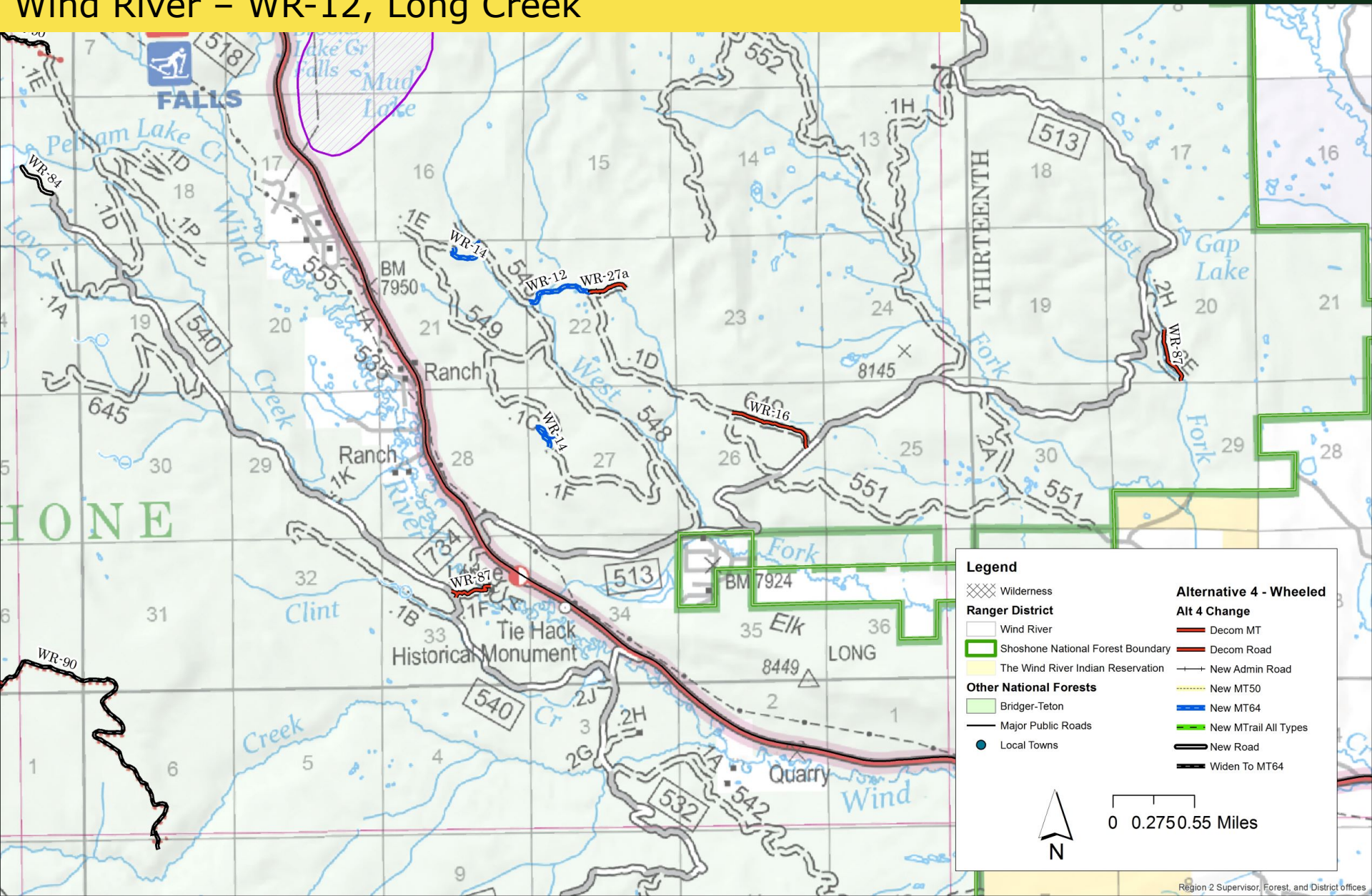


# Specific Proposals

---

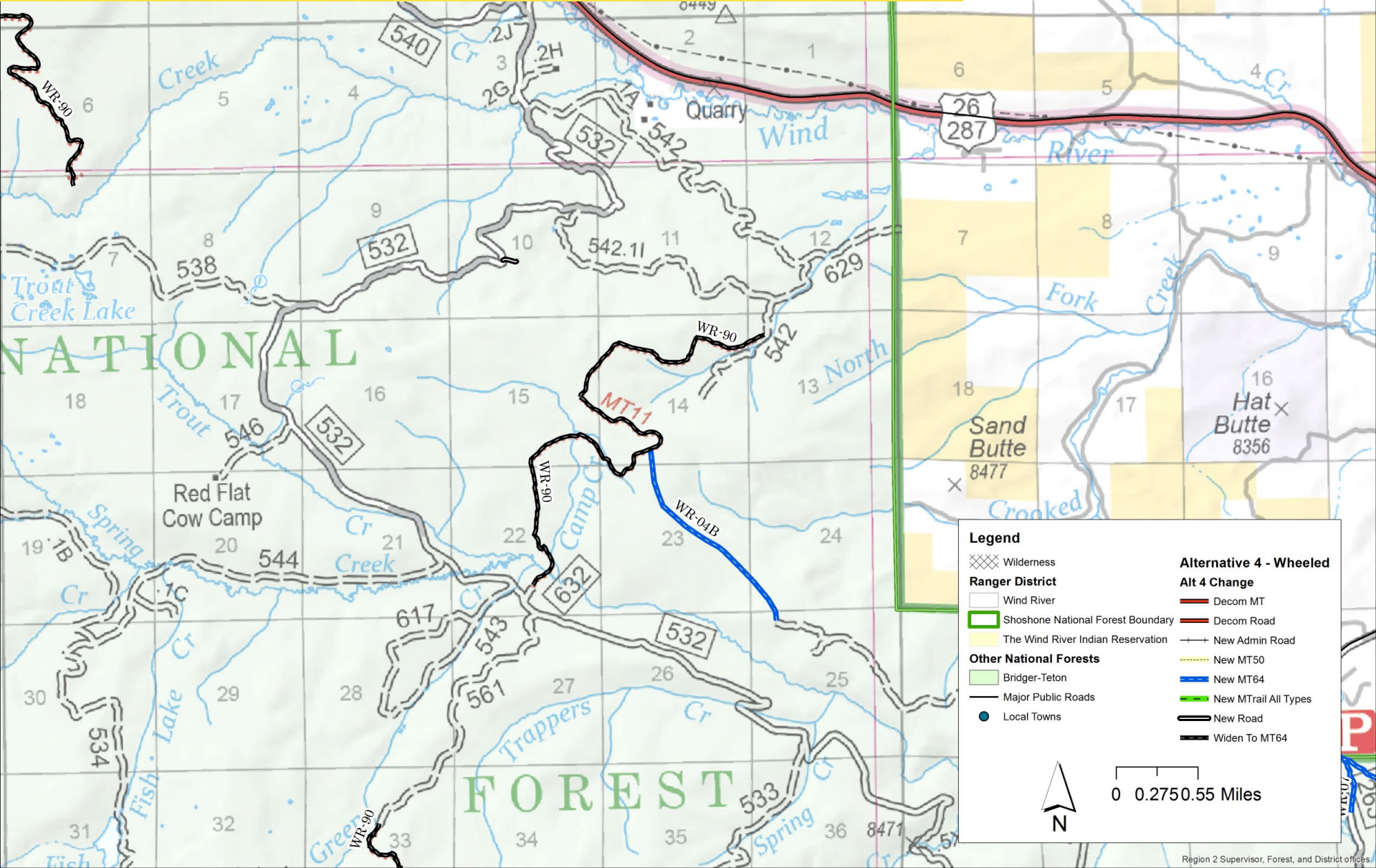


# Wind River – WR-12, Long Creek

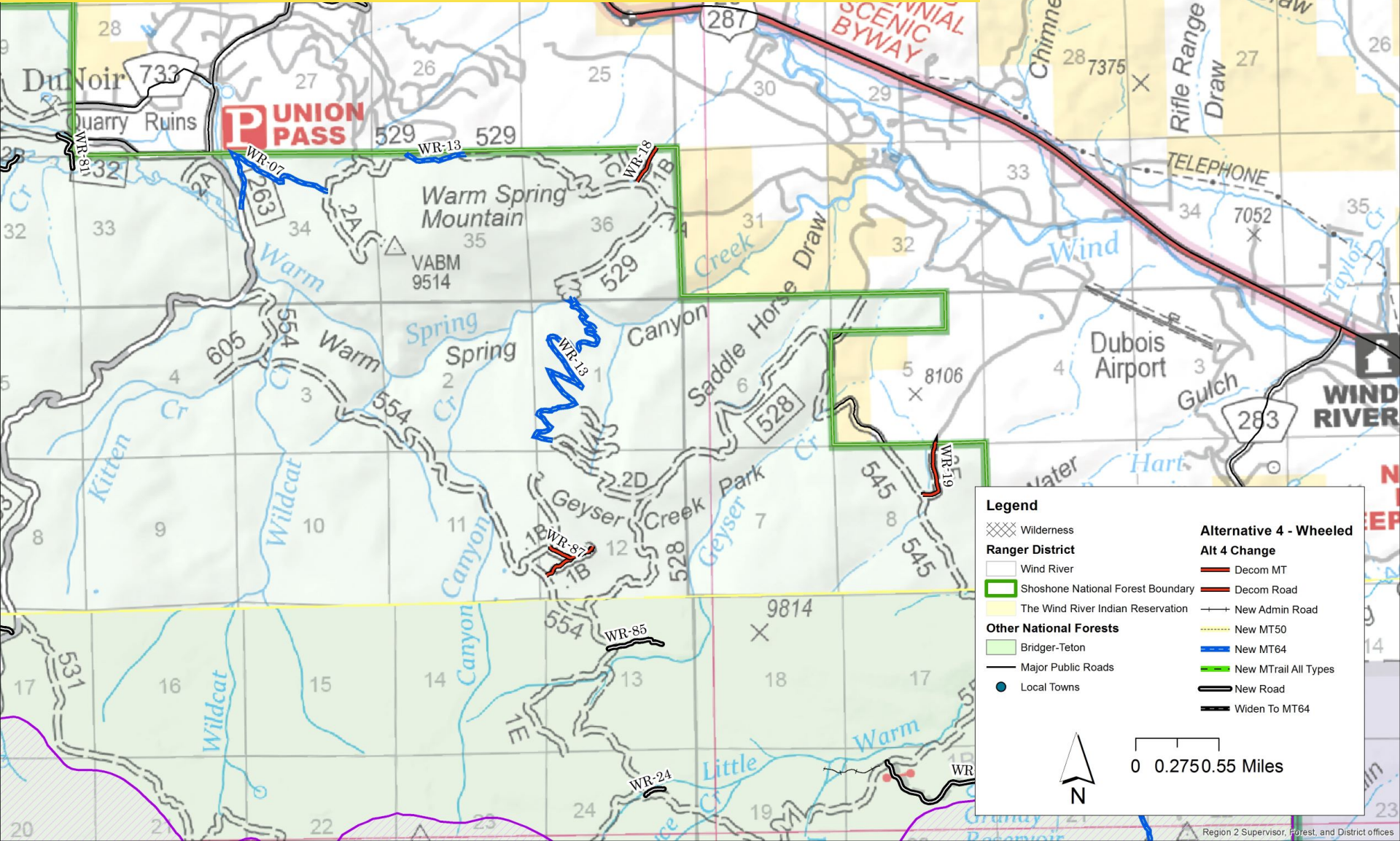




Wind River – WR-04B, No Mans to MT11

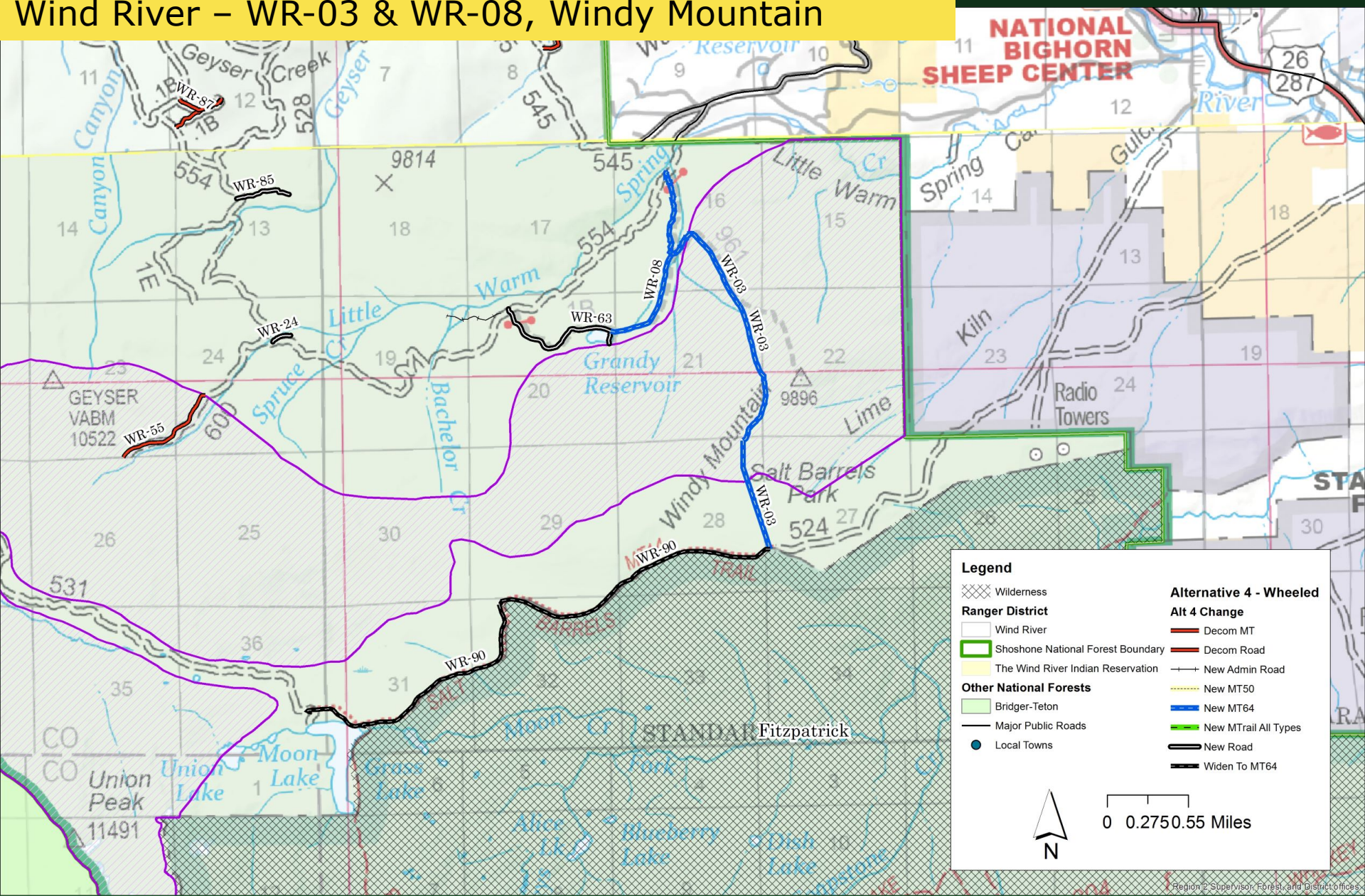


Wind River – WR-7, Warm Springs to Union Pass, & WR-13, Porcupine





# Wind River – WR-03 & WR-08, Windy Mountain







Forest Service  
U.S. DEPARTMENT OF AGRICULTURE

# Question & Answer



# Thank you for joining us tonight

---

- Do you still have questions? Please contact one of the following Shoshone National Forest employees:
  - Mark Foster, Environmental Coordinator –
    - [mark.foster@usda.gov](mailto:mark.foster@usda.gov) or 307-250-7626
  - Kristie Salzmänn, Public Affairs Officer –
    - [kristie.l.salzmänn@usda.gov](mailto:kristie.l.salzmänn@usda.gov) or 307-250-0148
- Submit comments in writing:
  - send an email to [SM.FS.shonfcomment@usda.gov](mailto:SM.FS.shonfcomment@usda.gov) with “Shoshone NF Travel Management Planning Project” in the subject line, or
  - via regular mail to Mark Foster (Environmental Coordinator), Shoshone National Forest, 808 Meadow Lane Avenue, Cody, WY 82414

