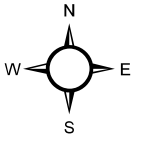




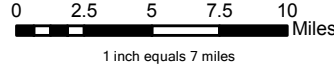
Christmas Tree Cutting



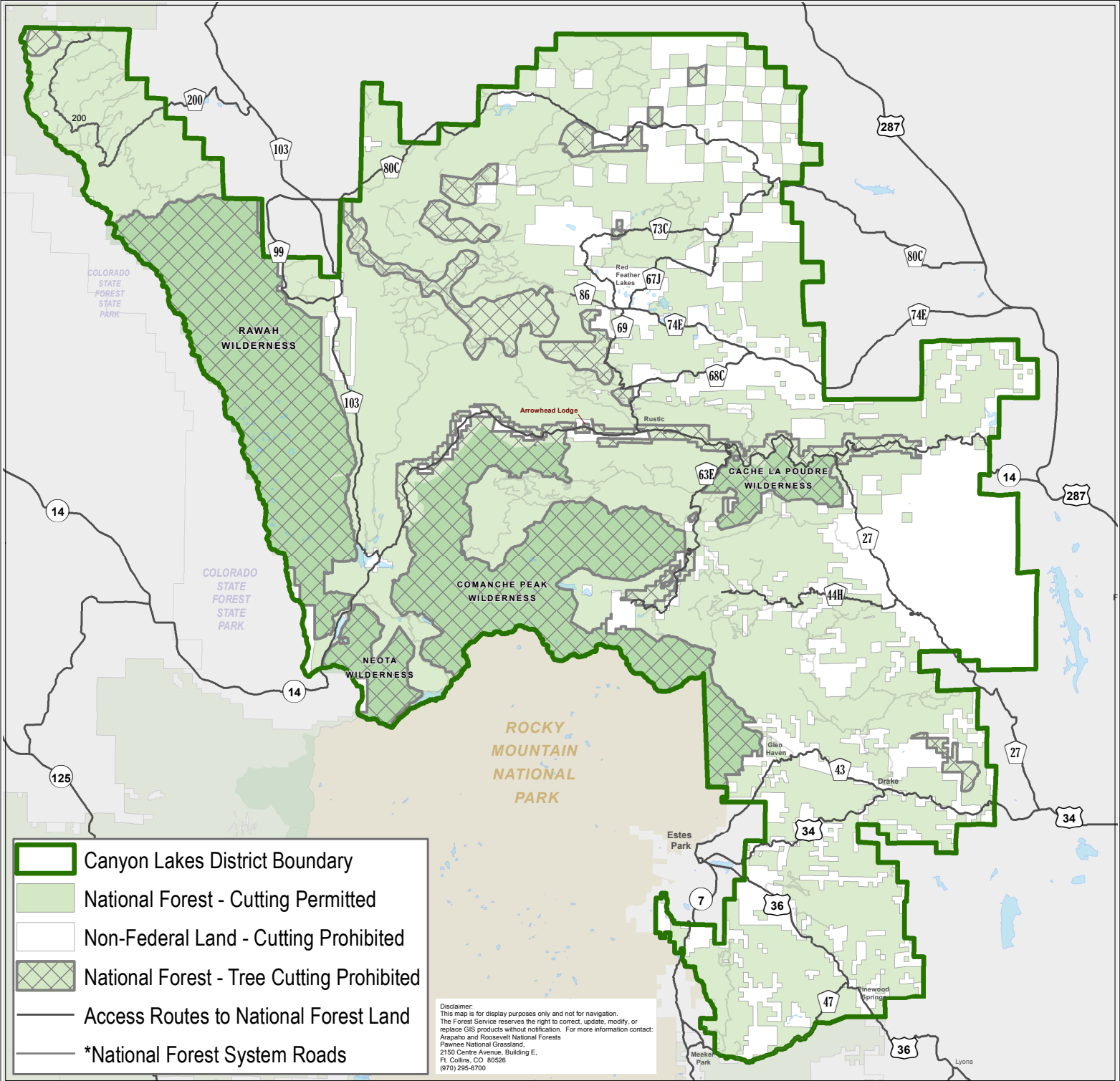
Forest Service
US DEPARTMENT OF AGRICULTURE

Roosevelt National Forest
Canyon Lakes Ranger District
Larimer County, CO

Areas and Access Routes



Date: 11/2/2021



*Reference the Motor Vehicle Use Map (MVUM) to identify roads seasonally closed to motor vehicles. These may be accessed by snowshoe, ski, and snowmobile depending on regulations.

- Travel at your own risk. Chains/traction devices recommended. Some roads may not be plowed or may not be suitable for passenger vehicles during the winter season.
- National Forest lands are intermixed with private lands. Only cut on public lands. Maps on the Avenza App can help identify your exact location.
- Follow all regulations listed on the cutting tree permit. Cutting is prohibited in developed recreation sites.
- Park in areas so traffic can safely pass; do not block gates.

*Scan for the
MVUM North Map



*Scan for the
MVUM South Map

