

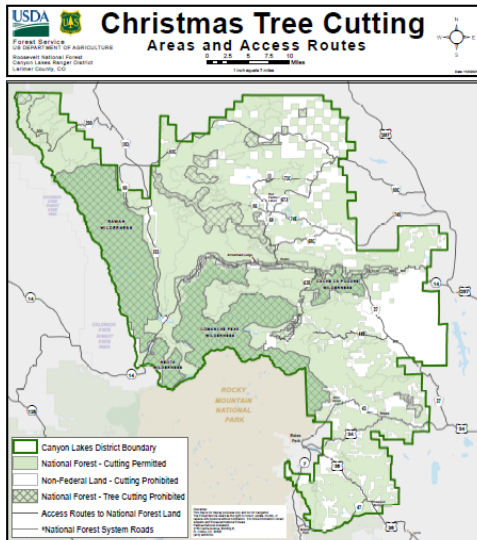
CUT YOUR OWN CHRISTMAS TREE

Canyon Lakes Ranger District

Open November 26, 2021 through January 8, 2022

Canyon Lakes District-wide Tree Cutting Area

Thank you for making us a part of your holiday tradition!



Visit an Information Station at West Lake Picnic Area
Near Red Feather Lakes
Saturday and Sunday
December 4, 5, 11 and 12 from 10:00 - 2:30

- ◆ Look for closed areas and private land on the map provided by recreation.gov.
- ◆ Cut stump as close to the ground as possible.
- ◆ Cut trees only within the National Forest boundary.
- ◆ Take or scatter any unused portion of your tree.
- ◆ Make sure your permit is displayed on dashboard or a visible location.
- ◆ Bring a rope to safely secure your tree for transport.
- ◆ Pack out all trash.
- ◆ Remember cell phones may not work in the mountains.
- ◆ Download Avenza App with Motor Vehicle Use Map prior to entering the forest, see QR code on reverse side.

Preparing for your adventure:

Purchase a \$20 permit per tree and download a map at [recreation.gov](https://www.recreation.gov).

We recommend having traction devices and tow straps available, and 4-wheel drive/all wheel drive vehicles.

Also carry: Ice scraper, shovel, flashlight, blanket, water, jumper cables, flares, and a radio for emergencies.

Bring Forest Visitor and Motor Vehicle Use maps.

Suggested Areas:

- ◆ Joe Wright Reservoir, off Highway 14 near Cameron Pass
- ◆ The Manhattan Road (CR 69) south of Red Feather Lakes outside of closed areas marked on map.
- ◆ Remember to avoid private land.

Safety and Comfort

Please use caution and drive slowly.

Park off roads in pull-offs; do not obstruct traffic or block gates.

Most roads are not plowed. Be prepared for winter driving conditions.

Expect winter conditions, below-freezing temperatures and cold winds.

Dress warmly.

Bring a spare key to prevent getting locked out of your vehicle.

Bring food and a warm beverage, blanket, shovel, first aid kit and sunglasses.

Stay with your group and let someone at home know where you are going.

Visiting Mountain Pine Beetle-Hit Areas and Burn Scars

Remember, your safety is your responsibility. Falling trees are always a hazard when visiting the forest. Be aware of your surroundings. Trees can fall without warning. Consider leaving when the winds pick up and be aware of your surroundings.

Cut trees with a stump diameter 6 inches or less.

