



**Forest Order No. 03-21-21  
Eldorado National Forest  
Pacific Southwest Region  
Caldor Fire Area, Road, and Trail Closure**

Pursuant to 16 U.S.C. § 551 and 36 C.F.R. § 261.50(a) and (b), and to provide for public safety, the following acts are prohibited within the Eldorado National Forest. This Order is effective from December 2, 2021 through March 31, 2022.

1. Going into or being upon National Forest System lands within the Caldor Fire Closure Area, as described in Exhibit A and shown on Exhibit C. 36 C.F.R. § 261.52(e).
2. Being on any National Forest System road within the Caldor Fire Closure Area, as listed in Exhibit B and shown on Exhibit C. 36 C.F.R. § 261.54(e).
3. Being on any National Forest System trail within the Caldor Fire Closure Area, as listed in Exhibit B and shown on Exhibit C. 36 C.F.R. § 261.55(a).

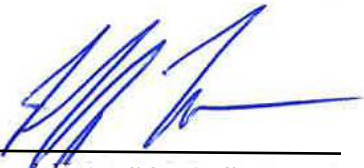
Pursuant to 36 C.F.R. § 261.50(e), the following persons are exempt from this Order:

1. Any Federal, State, or local officer, or member of an organized rescue or fire-fighting force in the performance of an official duty.
2. Persons with Forest Service Permit No. FS-7700-48 (Permit for Use of Roads, Trails, or Areas Restricted by Regulation or Order), specifically exempting them from this Order.
3. Persons with a Federal Energy Regulatory Commission license or Forest Service special use authorization for an electric transmission line, an oil or gas pipeline, or a communications site may access their permit areas to conduct administrative functions to protect property and related assets.
4. Commercial recreation special-use permit holders and their customers are not exempt from this Forest Order; however, commercial recreation special-use permit holders may access their permitted areas under the terms and conditions of their permits to conduct administrative functions and to protect property and related assets. Recreation residence permit holders are not exempt from this Order.
5. Owners or lessees of land and residents of such private landholdings, to the extent necessary to access their land.

These prohibitions are in addition to the general prohibitions contained in 36 C.F.R. Part 261, Subpart A.

A violation of these prohibitions is punishable by a fine of not more than \$5,000 for an individual or \$10,000 for an organization, or imprisonment for not more than 6 months, or both. 16 U.S.C. § 551 and 18 U.S.C. §§ 3559, 3571, and 3581.

Executed in Placerville, California, this 1st day of December 2021.



---

**JEFF MARSOLAIS**

Forest Supervisor  
Eldorado National Forest  
Pacific Southwest Region

**This Order supersedes Forest Order No. 03-21-19, dated October 14<sup>th</sup>, 2021.**

**Forest Order No. 03-21-21  
Eldorado National Forest  
Pacific Southwest Region  
Caldor Fire Area, Road, and Trail Closure**

**Exhibit A**

The boundary of the Caldor Fire Closure Area begins at the intersection of California Highway 50 and Sly Park Road, then continues east along Highway 50 to its intersection with Wright Lakes Road (Forest Service Road No. 11N26), then continues north on Forest Service Road No. 11N26 to its intersection with Forest Trail No. 16E12, then continues east on Forest Trail No. 16E12 to its intersection with the Desolation Wilderness Boundary, then continues south and east along the Desolation Wilderness Boundary to its intersection with the Eldorado National Forest Boundary at Talking Mtn, then continues south along the Eldorado National Forest Boundary to its intersection with Echo Summit Road (Forest Service Road No. 11N06), then continues along Forest Service Road No. 11N06 south to its intersection with Highway 50, then continues southwest on Highway 50 to its intersection with the Eldorado National Forest Boundary, then continues south along the Eldorado National Forest Boundary to its intersection with Forest Trail No. 17E16, then continues south along Forest Trail No. 17E16 to its intersection with Schneider Camp Road (Forest Service Road No. 10N13), then continues south along Forest Service Road No. 10N13 to its intersection with Highway 88, then continues west on Highway 88 to its intersection with Forest Trail No. 17E22, then continues south on Forest Trail No. 17E22 to its intersection with Forest Trail No. 17E21, then continues north on Forest Trail No. 17E21 to its intersection with Highway 88, then continues west on Highway 88 to its intersection with the Placerville/Amador District Boundary, then continues southwest along the Placerville/Amador District Boundary to its intersection with North South Road (Forest Service Road No. 10N83), then continues southwest along Forest Service Road No. 10N83 to its intersection with Gold Note Road (Forest Service Road No. 08N55), then continues west along Forest Service Road No. 08N55 to its intersection with Omo Ranch Road, then continues northwest on Omo Ranch Road to its intersection with Fairplay Road, then continues northwest on Fairplay Road to its intersection with Mt. Aukum Road, then continues north on Mt. Aukum Road to its intersection with Sly Park Road, then continues north on Sly Park Road back to the starting point at its intersection with Highway 50, as shown on Exhibit C.

**Forest Order No. 03-21-21  
Eldorado National Forest  
Pacific Southwest Region  
Caldor Fire Area, Road, and Trail Closure**

**Exhibit B**

**Closed Roads:**

10N25A	10N75	11N19	09N10	09NY26A	10N59	10N14G	10N40
11N26H	10N76	11N20A	09N10E	11N18C	10N59	09N43	10N40GS
10N16B	10N83	11N22A	09N11	11N22	10N59	09N46D	10N40M
10N16BA	10N83	10NY26A	10N32B	11N28	11N46H	09NY32C	10N91A
10N16BB	11N26E	11N02	10N33A	11N02W	10N41	10N14A	10N94
10N16BC	11N28B	10NY22	10N34D	11N06F	11N40G	10N25W	10N99
10N16D	10N59C	10NY22	08N57C	11N06F	10N55	10N29	10NY09
10N16E	10N62C	10NY26	08N58D	11N09	10N50M	10N47C	11N01
10N16C	10N66	10N82	09N75	11N10A	09N30P	09N47	11N11
11N40R	11N24	10N83B	09N17U	11N16	10N43	09N67A	09NY12
11NY37	11N26	10N52A	09N15A	11N46	10N55H	09N10G	09NY33
11N28D	10N29C	10N55K	09N15B	10N55W	09N49B	10N31B	10N75A
11N28E	10N30	10N55S	09N16	10N58	11N47D	09N30W	09N93
12N23AB	10N30	10N62D	09N16	10N62	10N83R	11N40K	10N65
11N40GA	10N31A	10N47A	09N16	10N83C	10NY06B	11N46K	10N46G
11N40GB	10N33	10N50B	08N43	11N46	10N43	10N91	10N50C
11N74	10N35B	10N50G	08N43A	10NY10	10N40C	10NY04	10N55E
11N14	10N28	10N26	08N49	10NY16	10N37	11N18	10N55P
08N55C	10N28	10N26D	08N49B	11N40H	11N40	11N23M	10N55R
08N58B	10N28	10N31	08N58	11N40M	11N40	09N92	10N61
09N65	10N28D	10N46L	09N20	11N46	10N95	10N64W	10N61
09N30N	10N28F	10N47	09N22B	11N46	10NY32	11NY32	09N49E
09N34G	09N46J	10N13	09N55	10N98	09N73	11NY32	09N34D
09N38A	11N32	10N23A	09N57	10N83M	08N55W	11NY32	09N44
09N45	11NY28	10N25	09N58C	10N84	10N57	11NY32	10N26C
09N47A	11NY31	10N25	08N55	10N87	10N57	09N30H	10N28C
09N49H	11NY34	09NY34	08N55	10N42A	10N67	09N34	10N34
09N30L	12N23A	09NY37	08N55E	10N46	10N06	10N47B	10N38
10N07	11N46J	09NY37	09N46	12N23	11N50	09NY22	09N30J
10N16A	11N46P	10N08A	09N46	11N47C	11N27A	11N53	09N30JW
10N22	11N40B	09NY21	09N50B	11N23	10N72	11NY74	09N30M
10N32A	11N36	09NY14A	09N38B	10N59W	09N14	10N83J	09N30V
09N30A	10N94A	09N69	09N10D	10N63	10N23	11N10	10N04
09NY07	10N98B	09NY14	09N10K	10N65A	10N26B	09N07	10N08B
09NY26	10NY02	09N60	09N34C	11NY02	10N50H	09N71	10N11
09NY33C	10NY04E	09N60	09N36	09N06	10N52	08N57	10N23B
10N64	10NY06	09N62	10N28A	09N10H	09N11A	11N46F	09NY43

10N50R	10NY07	09N65A	10N29B	09N80	10N40G	11N30	09NY48
10N44	10NY13	09N66	10N55HS	09N87	09NY32	11N23C	11N40E
11N02A	10N91D	09N50	10N14	08N55H	10N91B	10N32	11N46N
11N13	10N43C	09N53	10N14	08N57D	10NY05	10N35	11N46NA
11N28A	10N46J	09N48	10N16	09N54	10NY12	10N39	10N04A
10N39E	11N23D	09N49	10N27	09N56	10N69	11NY01	10N04B
10N40E	11N27	09N44A	09NY33A	09N59	08N58C	11NY08	10N11A
10N83W	10N40D	09N38	09NY33D	09N63	09N61	11N31	09N35
11N40A	10N40R	09N30T	09NY40	09N18	09N19	10N28W	10N14HB
11N47	10N42	09N30U	09NY47	09N15	09N86	11N16A	10N14HA
11N33	11N09A	09N31	10N08	09N14A	10N40T	10N39D	10N14H
11NY29	11N15	09N33	10N40N	08N55A	10N41B	10N39F	10N91E
11NY33	11N17	10N36	09N72	08N55F	10N13D	10N40	09N55E
09N30K	09N30R	09N30	09N38C	10N61C			
09N30C	09N30RA	09N30	10N46M	10NY21			

**Roads Partially Closed (Closed Within the Caldor Fire Closure Area):**

09N05	10N50	09N02	10N83N
11N26C	09N02A	09N67	10N03
10N83	09N22	08N46	08N60
11N26	09N09	10N83K	11N06
11N37	11N43	09N14	09N40
11N38	11N99	11N26A	10N19
11N26B	08N91	09N17	09N32

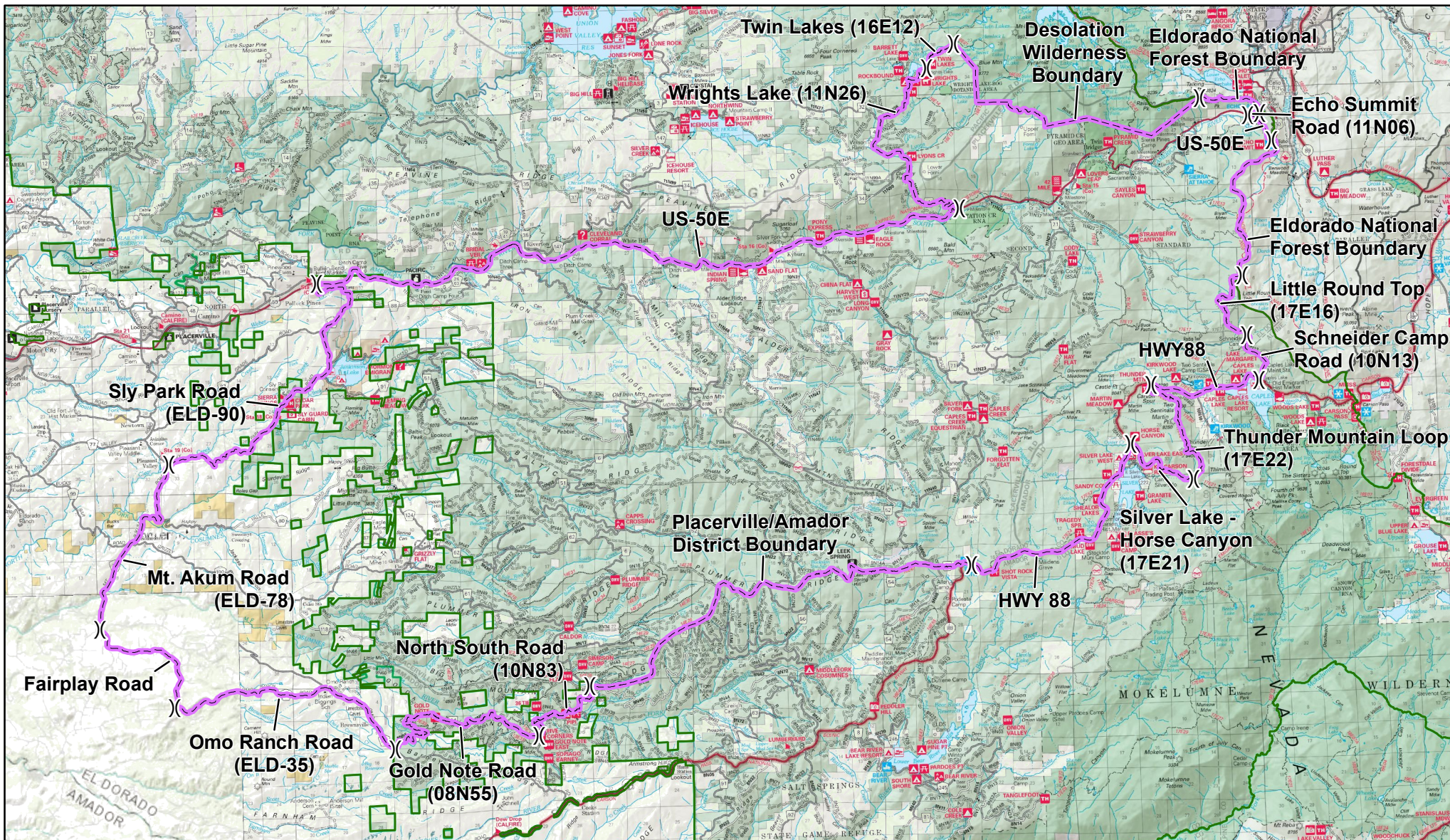
**Closed Trails:**

14E32	14E26	17E16
14E34	14E27	16E33
14E31	14E28	17E74
14E33	13E19	16E29
14E29	13E19	16E27
14E30	13E19	17E73
17E12	13E19	17E78
17E17	13E19	17E77
13E19	17E22	14E38
13E19	17E16	14E41
14E25		

**Trails Partially Closed (Closed Within the Caldor Fire Closure Area):**

13E33	14E26
13E34	17E21
14E36	15E35
14E26	





# **Order No. 03-21-21** **Eldorado National Forest** **Caldor Fire Closure** **Exhibit C**

- (X) Intersection
- Eldorado National Forest Boundary

