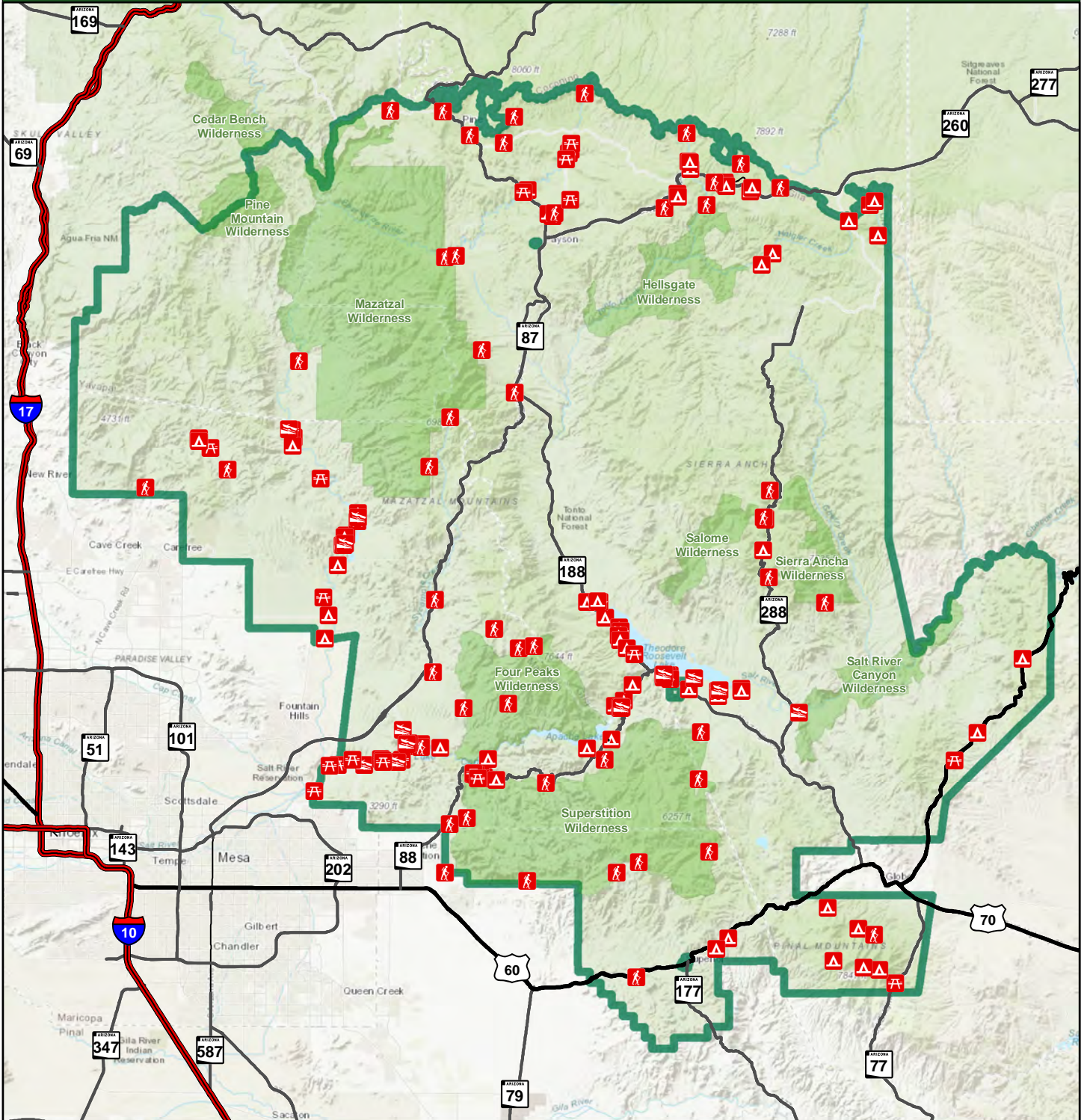


TONTO NATIONAL FOREST SOUTHWEST REGION 3



Special Restrictions for Occupancy and Use Exhibit A Order #: 03-12-00-22-04

Road, trail, and area closure affects only National Forest System roads, trails and lands within the closure area on Tonto National Forest. The closure does not apply to any non-National Forest System roads, trails or lands within the closure boundary.

Date Saved: 2/3/2022

Document Path: T:\FS\NFS\Tonto\Program\5300LawEnforcement\GIS\Order_Closures\2022\2022_Closure_MXD\03-12-00-22-04_SpecialOccupancyUse_ExA.mxd

