

Boulder Ranger District
2140 Yarmouth Avenue
Boulder, CO 80301
(303) 541-2500
FAX: (303) 541-2515



United States Department of Agriculture



Woodland Lake Trail #811

Difficulty: Moderate

Trail Use: Moderate to Heavy

Length: From Hessie Trailhead (TH) to Woodland Lake - 4.3 miles; to Skyscraper Reservoir - 4.8 miles. DISTANCES ARE ONE WAY.

Elevation: 9,000 feet at the TH; 10,972 feet at Woodland; 11,221 feet at Skyscraper Reservoir.

Open To: Hiking in groups of 12 or less (pets must be on leash at all times)

Access:

- From Nederland, head south on Colorado Highway 119 for 0.5 miles. Turn west onto County Road 130 (Eldora Ski Resort sign). Stay on the main road through the town of Eldora.
- Once the pavement ends, continue for another mile. Look for a sign and vehicles parked above a side road heading sharply down and to the left. This side road leads to Hessie TH and is a cobblestone creek bed that carries water year round. Vehicles without high clearance should park at this junction. From here, it is a 0.25-mile walk to the trailhead.
- This trailhead sees high use, especially on weekends, and parking is limited.

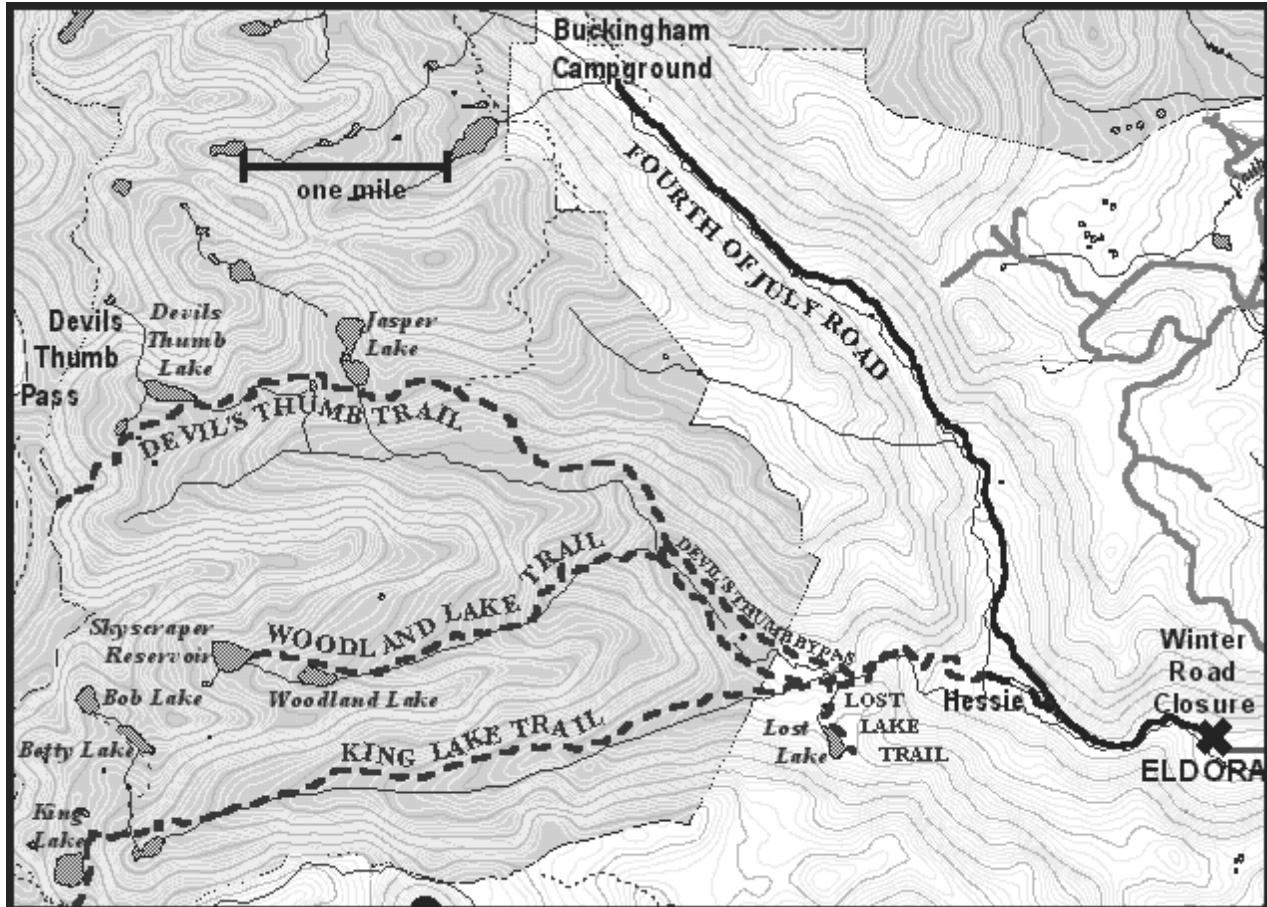
Trail Highlights:

- From the trailhead, cross the footbridge and take the Devil's Thumb Trail #902, which climbs steeply for about a half-mile on an old road.
- The Devil's Thumb Bypass turns right (north) in 0.8 miles, just before the bridge. Either the Devil's Thumb Trail or the Devil's Thumb Bypass will get you to the same destination. The main Devil's Thumb Trail is the shorter route and follows an old road along the south side of the creek, staying right past junctions with the Lost and King Lake Trails.
- It is 1.3 miles from the trailhead to King Lake Trail junction. The Devil's Thumb Trail enters the Indian Peaks Wilderness just beyond the King Lake Trail junction. A fairly level mile leads to the Woodland Lake Trail junction. From here, the trail climbs fairly steeply along the creek, then levels out. Woodland Lake is reached in two miles. Continue up the headwall above Woodland Lake another 0.5 miles to Skyscraper Reservoir.

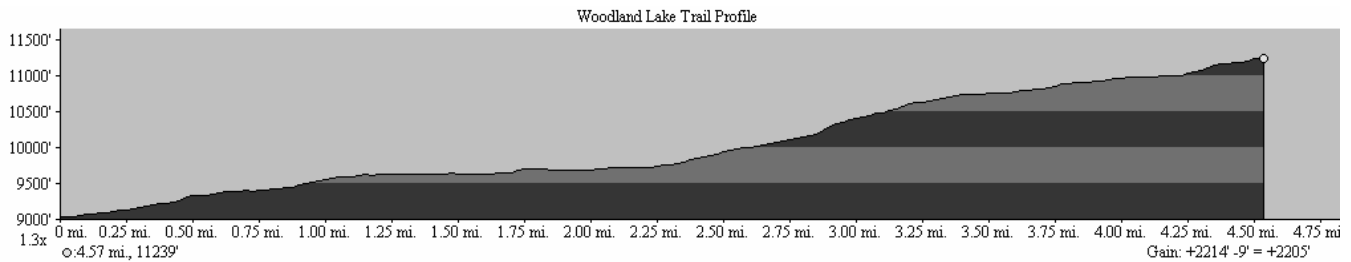
Important Information:

- CAMPFIRES ARE NOT ALLOWED. PERMITS REQUIRED FOR OVERNIGHT STAYS INSIDE THE INDIAN PEAKS WILDERNESS FROM JUNE 1 - SEPTEMBER 15.
- Additional permit requirements exist for large and organized groups.
- Packstock restrictions apply.

Trail Map & Profile



This map is intended as a general guide only and not for actual land navigation.



Printed from TOPO! ©1999 Wildflower Productions (www.topo.com)



For More Information:

Boulder Ranger District
 2140 Yarmouth Avenue
 Boulder, CO 80301
 (303) 541-2500

USDA is an equal opportunity provider and employer.