



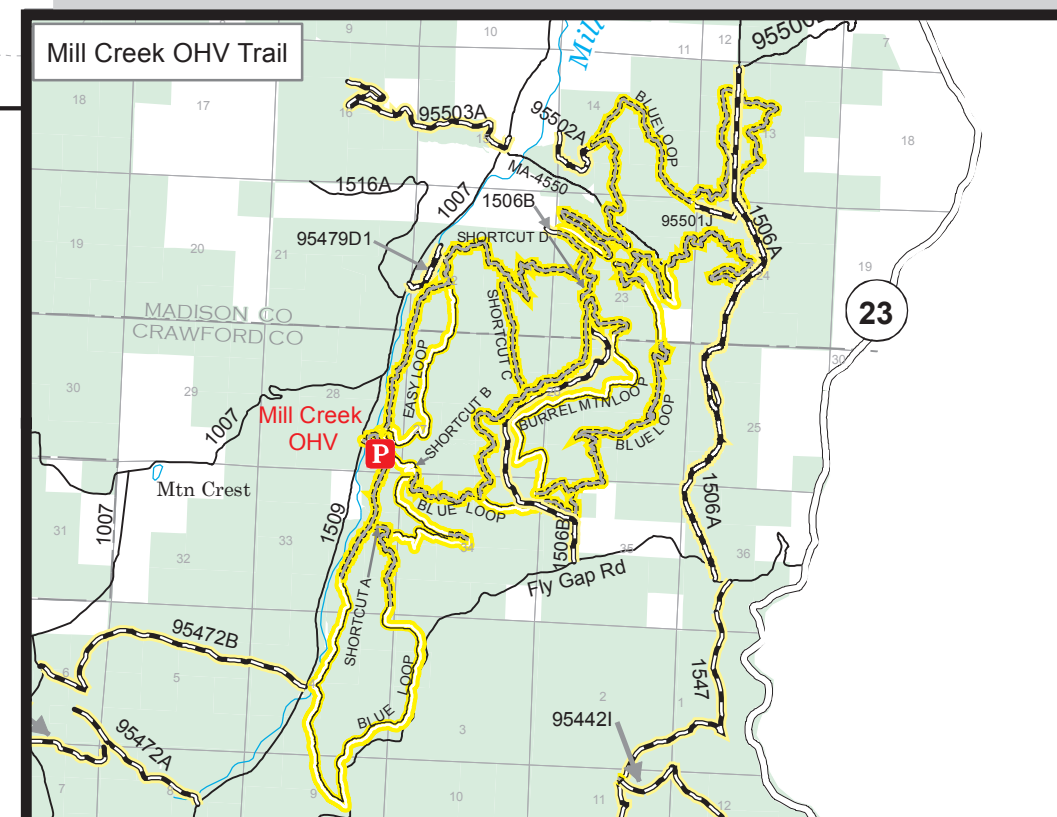
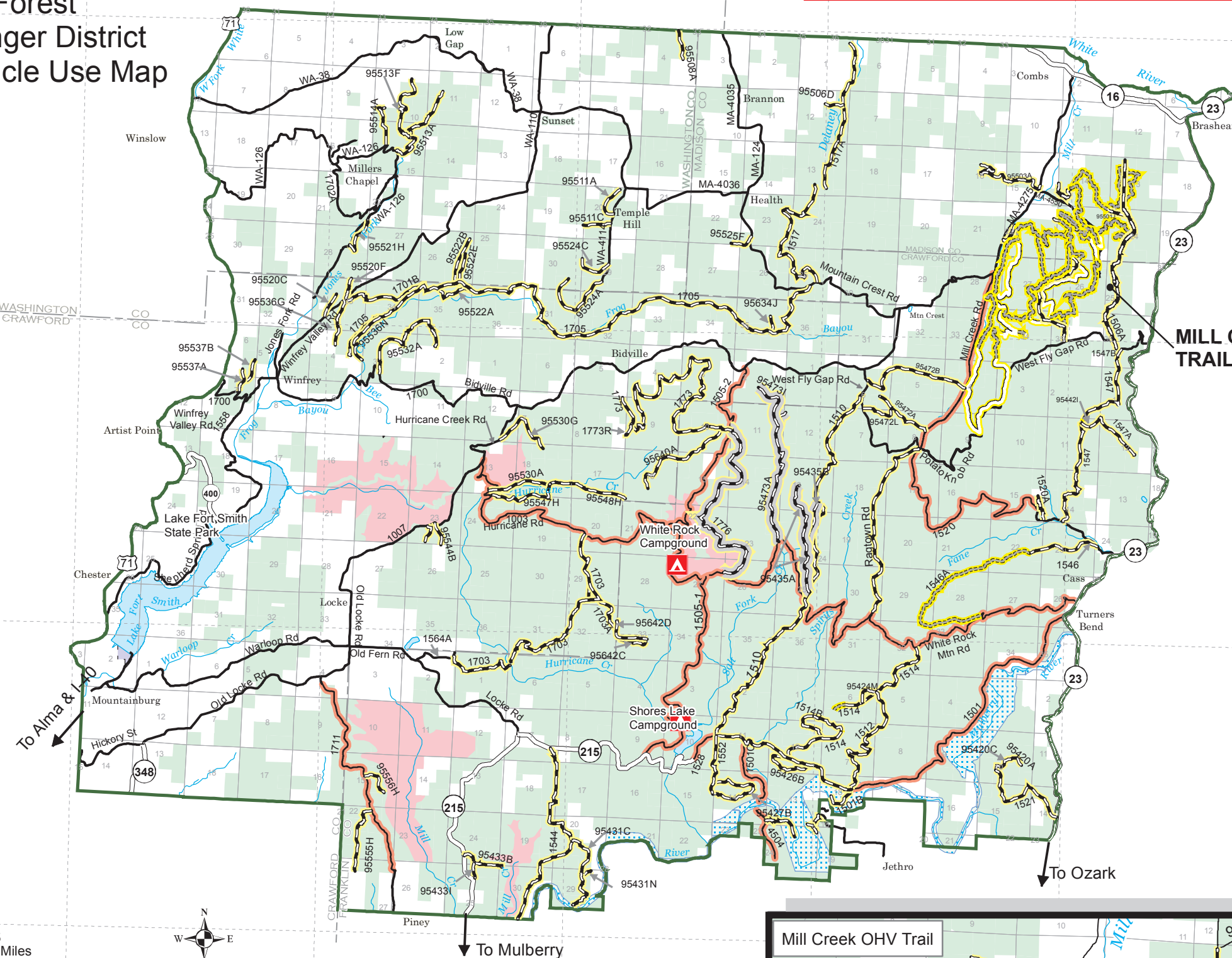
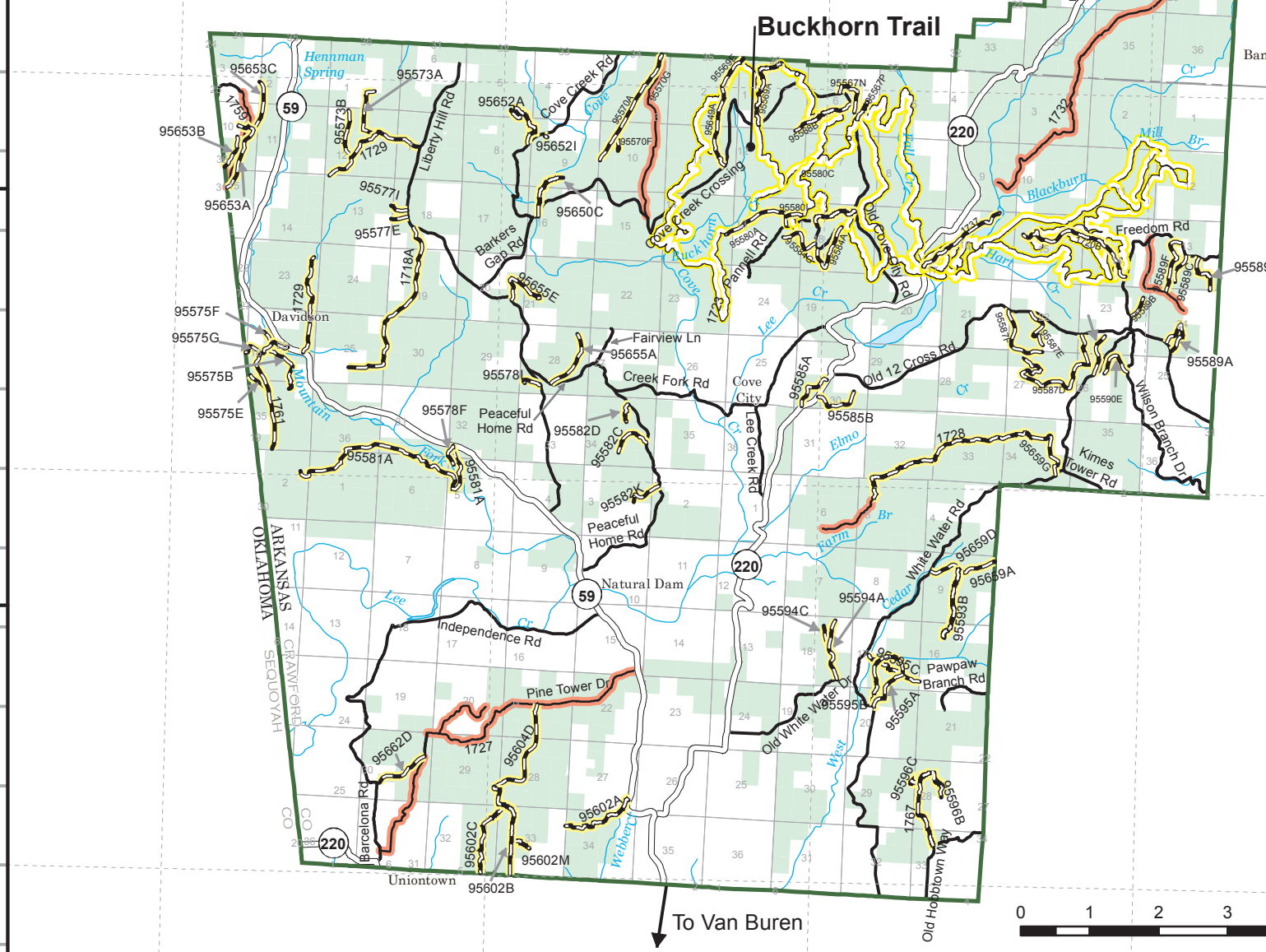
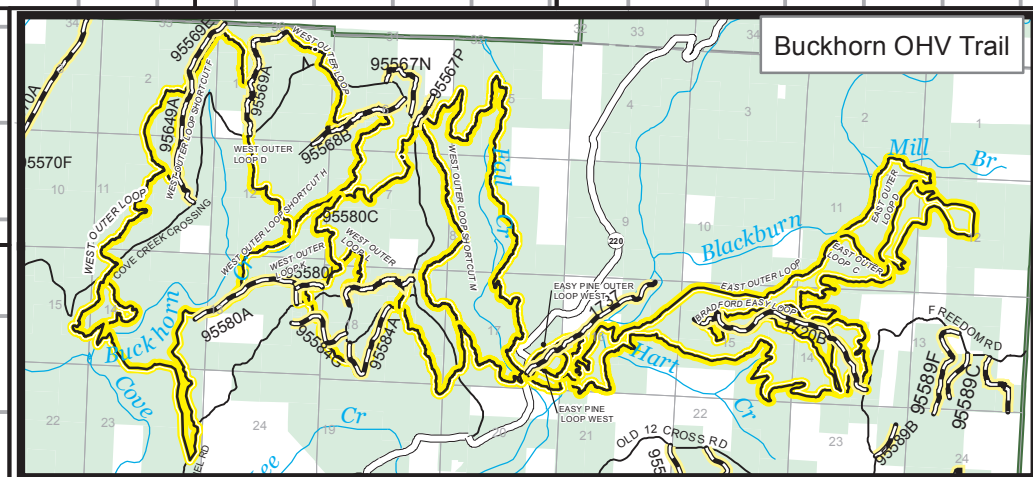
# MAP A

## Ozark National Forest

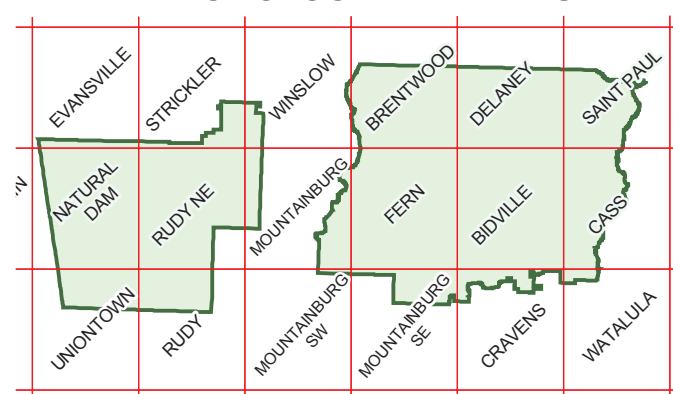
### Boston Mountain Ranger District

### 2021 Off-Highway Vehicle Use Map

**\*\*Routes could be signed as "Closed" on the ground due to hazards - please check with district office at (479) 667-2191 to obtain a list of closed OHV routes.\*\***



#### INDEX TO TOPOGRAPHIC MAPS



Topographic maps are available from the Branch of Distribution  
U.S. Geological Survey, Box 25286, Denver Federal Center, Denver, CO 80225  
or  
[www.usgs.gov](http://www.usgs.gov)

- Mill Creek Trail is a FEE Use area**
- Roads Open to All Vehicles
  - Seasonal Roads Open to All Vehicles  
(Check with local district office for closure dates.)
  - Seasonal Roads Open to Highway Legal Vehicles Only  
(Check with local district office for closure dates.)
  - Trails Open to Off Highway Vehicles Only
  - Forest Service Jurisdiction Roads Open to Highway Legal Vehicles Only
- National Forest Boundary
  - County Boundary
  - State Highway
  - County Roads
  - Streams
  - Ozark National Forest
  - Special Interest Areas
  - Wild and Scenic River Corridor
- Forest Service Campgrounds
  - Parking Area
  - Supervisor's Office
- ROUTE MARKERS**
- Interstate
  - U.S.
  - State
  - County
  - National Forest

