



MAP E

Ozark National Forest Sylamore Ranger District 2018 Off-Highway Vehicle Use Map

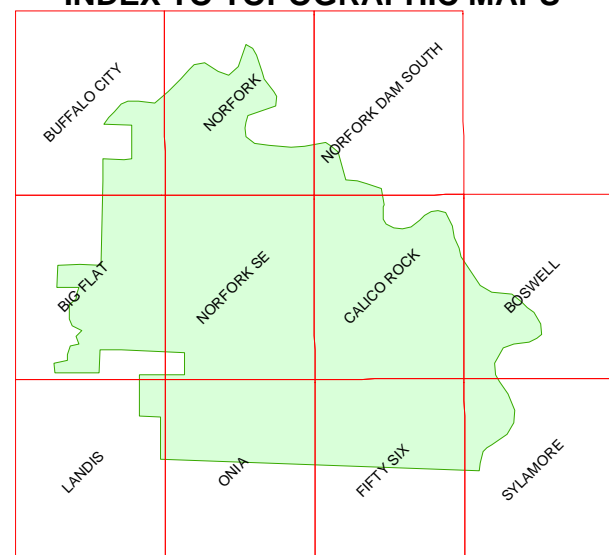


- Roads Open to ALL Vehicles
- Seasonal Roads Open to Highway Legal Vehicles Only
(Check with local district office for closure dates.)
- Seasonal Roads Open to All Vehicles
(Check with local district office for closure dates.)

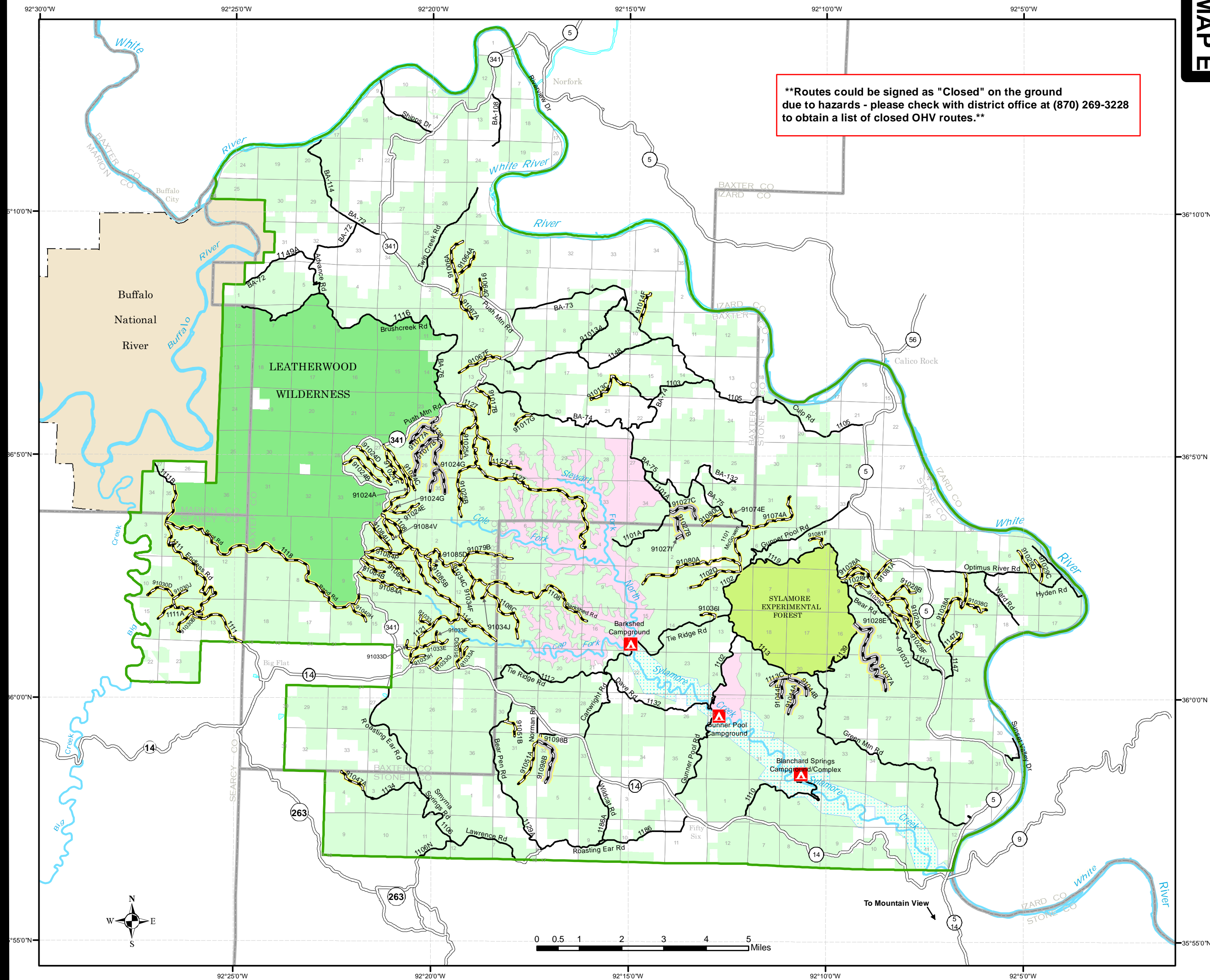
- National Forest Boundary
 - County Boundary
 - State Highway
 - Roads
 - Streams
 - Ozark National Forest
 - Buffalo National River
 - National Forest Wilderness Area
 - Experimental Forest
 - Special Interest Areas
 - Wild and Scenic River Corridor
 - Forest Service Campgrounds
 - Supervisor's Office
- ROUTE MARKERS**
- Interstate
 - U.S.
 - State
 - County
 - 1120 National Forest



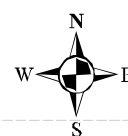
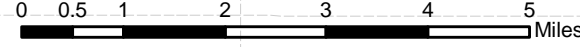
INDEX TO TOPOGRAPHIC MAPS



Topographic maps are available from the Branch of Distribution
U.S. Geological Survey, Box 25286, Denver Federal Center, Denver, CO 80225
or
www.usgs.gov



****Routes could be signed as "Closed" on the ground due to hazards - please check with district office at (870) 269-3228 to obtain a list of closed OHV routes.****



MAP E