

- ◆ Educate yourself prior to a trip by obtaining travel maps and regulations from public agencies. Plan for your trip by taking recreation skills classes, and knowing how to operate your equipment safely.

EDUCATE YOURSELF

- ◆ Respect the rights of private property owners, all recreational trail users, campers, and others so they can enjoy their recreational activities undisturbed.
- ◆ Do your part by modeling appropriate behavior: leave the area better than you found it; properly dispose of waste; minimize the use of fire; avoid the spread of invasive species, and restore degraded areas.

RESPECT THE RIGHTS OF OTHERS

- ◆ Avoid sensitive areas such as meadows, lake shores, wetlands and streams. Travelling off designated roads and trails is not permitted.
- ◆ “Pack it in, pack it out.” Trash is an eyesore and it attracts scavengers that endanger other wildlife.
- ◆ Know where you are permitted to ride. Travel responsibly on designated roads, or areas. Have a copy of the current Motor Vehicle Use Map (NVUM) while out riding.
- ◆ Avoid sensitive areas such as meadows, lake shores, wetlands and streams. Travelling off designated roads and trails is not permitted.

TRAVEL RESPONSIBLY



RIDE WISELY



SAFETY TIPS

- ◆ Leave trip plans with a friend.
- ◆ Check weather forecast. Be aware of weather, road and traffic hazards.
- ◆ Bring repair tools.
- ◆ Check your equipment. Conduct a daily pre-trip inspection before driving.
- ◆ Bring a first aid kit.
- ◆ Dress adequately for the conditions
- ◆ Know terrain hazards. Be aware that some of the routes are shared with full size vehicles.
- ◆ Make sure that you can stop in less than 1/2 the visible distance (recommended speed on trail is 8 mph).



The future of OHV use depends on the actions of OHV riders and safe, lawful operation of all off highway recreational vehicles. Your assistance as a rider in this effort will be greatly appreciated and assures safe OHV riding for all.

To locate an approved safety course visit:

<http://parksandrecreation.idaho.gov/recreation/ohveducation.aspx>





North Fork Ranger District
Nez Perce-Clearwater
National Forest

Clark Mountain OHV Trail System



Photo Credit: Kevan Maas

Clark Mt. OHV Trail System

Gobblers Knob Trail 604-A: Double track trail open to ATV traffic. A short dead-end trail terminating at the scenic overlook of the Orogrande Creek drainage.

Cottonwood Creek Trail 605: Double track trail open to ATV traffic along an old road. Provides access to loop system from

Other OHV Trails on the North Fork Ranger District

- ◆ Deception OHV Trail
- ◆ Sheep Mountain OHV Trail
- ◆ Scurvy Lookout OHV Trail
- ◆ Fish Lake OHV Trail
- ◆ Orogrande OHV Trail



North Fork Ranger District
Nez Perce-Clearwater
National Forest

12730 Highway 12
Orofino, ID 83544
Phone: 208-476-4541
Fax: 208-476-8329

Kelly Forks Work Center
Typically open Memorial Weekend through Mid October. Friday-Tuesday
832-380-6556

Clark Mt. OHV Trail System

Miles: 30
Season: Mid June until the snow flies

Washington Ridge Trail 600: Single track trail open to motorcycles only, providing access from Washington Creek Campground. A constant climb with several steep pitches. Good huckleberry picking in the logging units.

Clark Mt. Trail 601: Single track trail open to motorcycles only, providing access from the former Bungalow Ranger Station site. A constant climb winding through a variety of forest canopies to open bedrock formations near the top.

Morgan Gulch Overlook Trail 601-A: Single track trail open to foot traffic only. A steep winding route along the rocky edge of the ridge. Views of the river to the north near Pot Mountain.

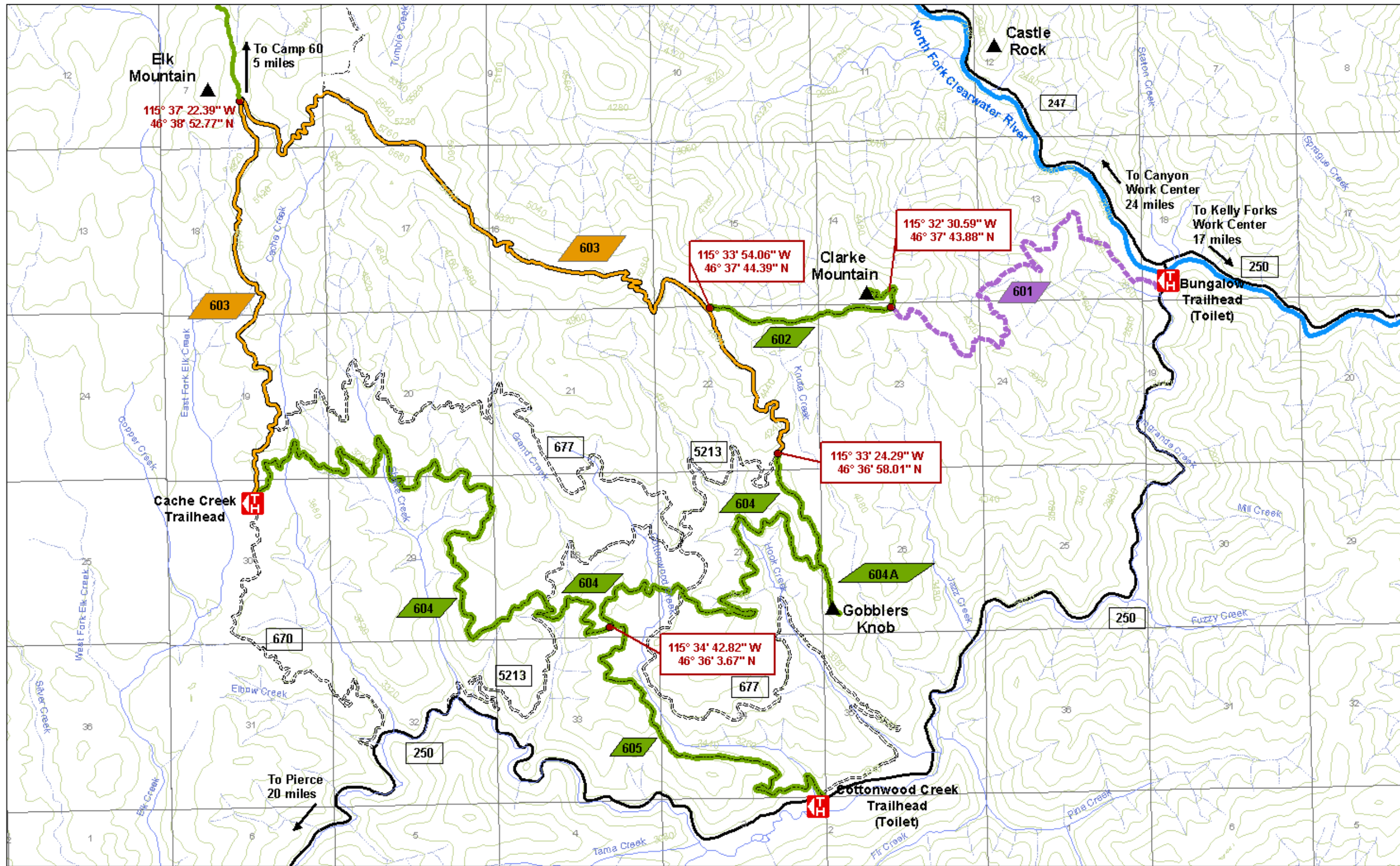
Clarke Mt. Lookout Trail 602: Double track trail open to ATV traffic. Recommended for more experienced riders. Steep grades, narrow tread with sharp turns, drop-offs, and limited pullouts.

Elk Mountain Ridge Trail 603: Double track trail open to ATV traffic and to high clearance full size vehicles. Primitive single lane road on ridge top location. Wide panoramic views to north and south.

Elk Clarke Contour Trail 604: Double track trail open to ATV traffic. Route follows sections of old road tied together with newly constructed trail. There are multiple stream and open road crossings.

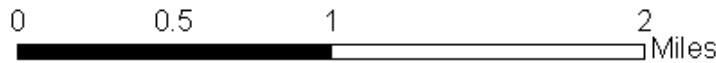
U.S. Forest Service Road Requirements

- ◆ Valid driver's license .
- ◆ Drivers under the age of 15 must be supervised by a licensed adult operator and carry proof of completion of an approved safety course Liability Insurance or alternative insurance.
- ◆ Current valid Idaho Department of Parks and Recreation OHV registration sticker.
- ◆ If under age 18 a helmet must be worn
- ◆ Muffler with approved spark arrestor are required on all OHVs.
- ◆ UTV's (side-by-sides) can travel only where full size vehicles are permitted. They are currently not permitted on ATV trails regardless of width.



North Fork Ranger District
 Nez Perce-Clearwater National Forest

Clarke Mountain Off Highway Vehicle (OHV) Trail System



Legend: Authorized Use by Trail

- Motorcycle, Stock, Mtn Bike, Hiker
- ATV, Motorcycle, Stock, Mtn Bike, Hiker
- Full Size, ATV, Motorcycle, Stock, Mtn Bike, Hiker
- Main Roads
- Access Roads
- GPS Points