

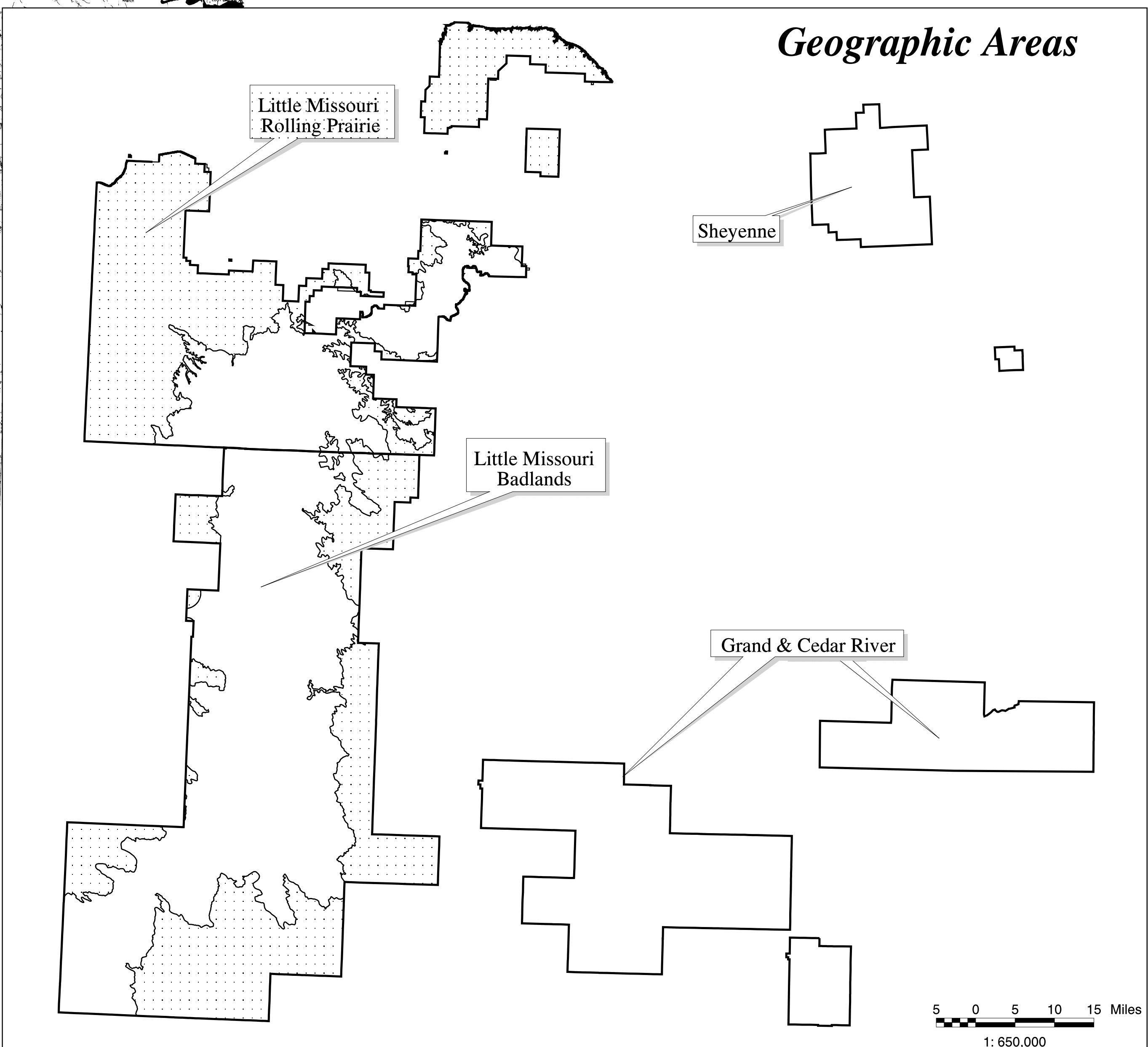
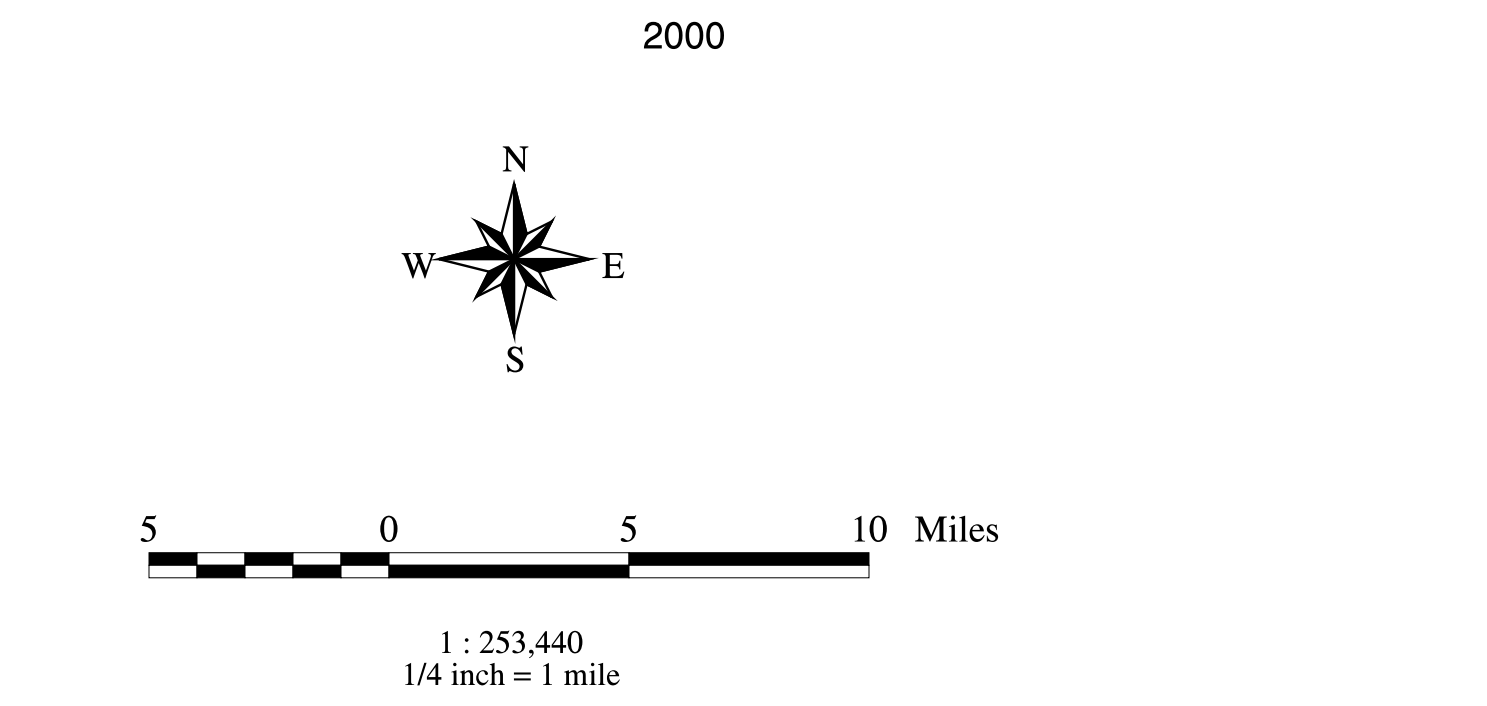
Alternative 3

This multiple-use alternative would modify the current Management Plan direction by adopting additional special area designations, such as Research Natural Areas and Special Interest Areas, and placing added emphasis on native plants and animals, and recreation opportunities.

FINAL Environmental Impact Statement

Dakota Prairie Grasslands

Cedar River National Grassland
Grand River National Grassland
Little Missouri National Grassland
Sheyenne National Grassland



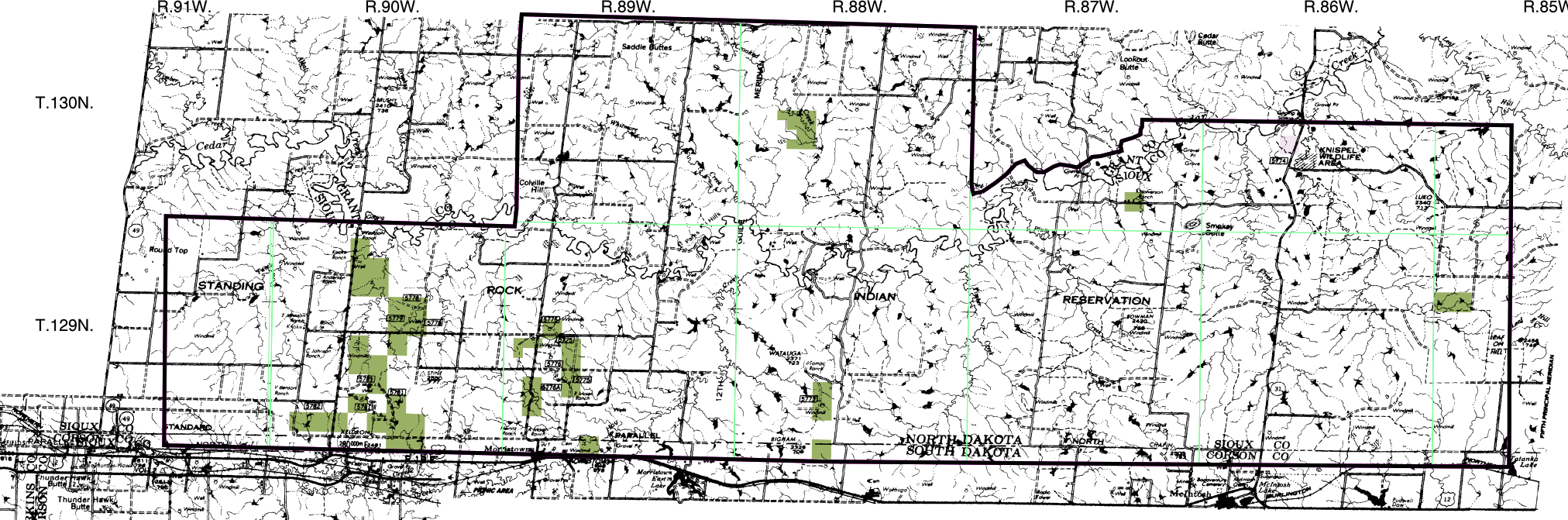
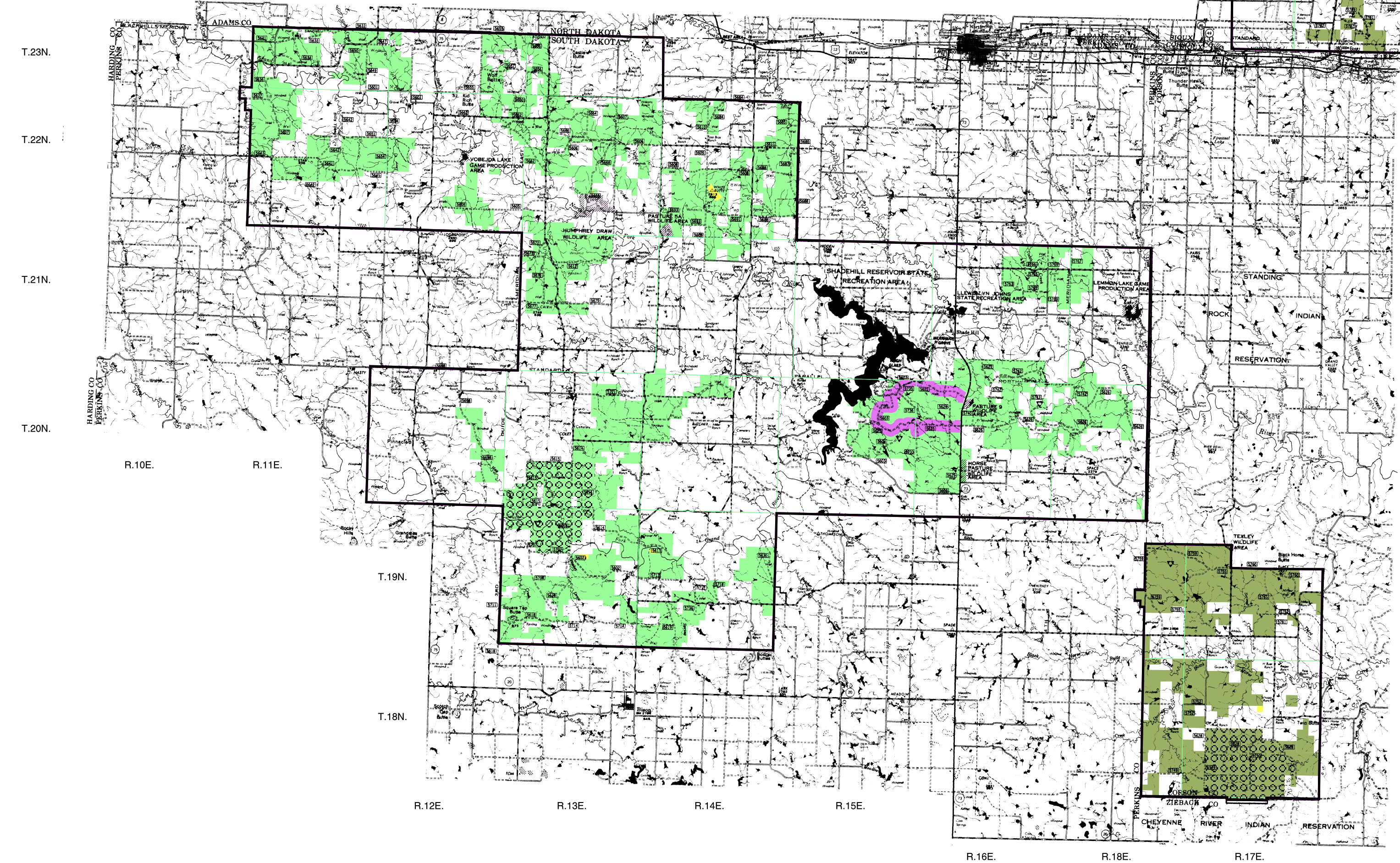
Management Areas

- 1.2a - Suitable For Wilderness
- 1.31 - Backcountry Recreation Non-motorized
- 2.1 - Special Interest Areas
- 2.2 - Research Natural Areas
- 2.4 - American Indian Traditional Use Areas
- 3.51 - Bighorn Sheep
- 3.51a - Bighorn Sheep With Non-Federal Mineral Ownership
- 3.63 - Black-Footed Ferret Reintroduction Habitat
- 3.64 - Special Plant and Wildlife Habitat
- 3.65 - Rangelands with Diverse Natural-Appearing Landscapes
- 3.66 - Ecosystem Restoration
- 4.22 - Scenic Areas, Vistas or Travel Corridors
- 4.32 - Dispersed Recreation: High Use
- 6.1 - Rangeland with Broad Resource Emphasis

Legend

- Administrative Boundaries
- Geographic Area Boundaries
- Township & Range Lines
- Theodore Roosevelt National Park
- State Lands
- National Park Service River Designation
- National River System: Scenic Designation
- National River System: Wild Designation
- Concurrent Management
 - Research Natural Area
 - Bighorn Sheep
 - No New Road Construction

Legend	Concurrent Management	Acres
No New Road Construction		19700
3.51- Bighorn Sheep		51130



Management Areas	Acres
1.2a - Suitable for Wilderness	41520
1.31 - Backcountry Recreation Nonmotorized	69050
2.1 - Special Interest Areas	6420
2.2 - Research Natural Areas	20120
2.4 - American Indian Traditional Use Areas	6280
3.51 - Bighorn Sheep	19320
3.51a - Bighorn Sheep with Non-Federal Mineral Ownership	35810
3.63 - Black-Footed Ferret Reintroduction Habitat	29180
3.64 - Special Plant and Wildlife Habitat	2270
3.65 - Rangelands with Diverse Natural-Appearing Landscapes	383120
3.66 - Ecosystem Restoration	63760
4.22 - Scenic Areas, Vistas or Travel Corridors	23570
4.32 - Dispersed Recreation: High Use	7990
6.1 - Rangeland with Broad Resource Emphasis	549720

PLEASE NOTE: Management areas are defined as parts of the grasslands that are managed for a particular emphasis. Each management area has a prescription that consists of a theme, desired conditions, and standards and guidelines that apply to it. The management area prescriptions are grouped into eight major categories, based on a continuum from least evidence of disturbance (Category 1) to most (Category 8).

Geographic areas are all or portions of national grasslands or forests where management is directed towards achieving specified desired conditions. Geographic area management direction is direction that is too specific to apply across large grassland units but is not limited to specific management areas.

The management and geographic area boundaries on this map were computer generated. These lines and their locations are only approximate at this scale.