

United States Department of Agriculture
Forest Service

2018

Idaho, Wyoming

America's Great Outdoors

Ranger District

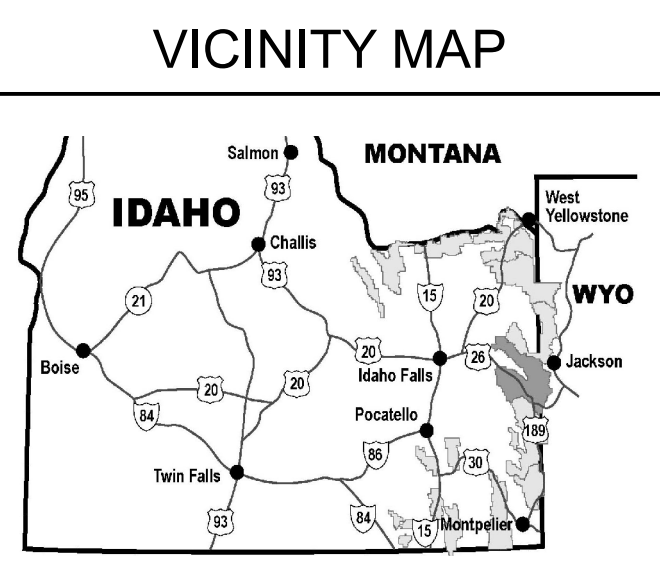
Palisades

National Forests

Caribou-Targhee

Use Map

Motor Vehicle



INFORMATION SOURCES

Emergency Services 911
Idaho State Police 208-392-4411 or 1SP
Bonneville County Sheriff 208-229-1200
Madison County Sheriff 208-356-6426
Teton County Sheriff 208-354-2323
Teton County, WY Sheriff 307-733-2331
Lincoln County, WY Sheriff 307-868-6231

Report a Fish or Game Violation
1-800-632-5999

Report an OHV Violation 208-523-1412
Report a Wildlife 208-524-7600

Palisades Ranger District
3659 E. Ririe Highway
Idaho Falls, Idaho 83401
Phone: (208) 523-1412

Caribou-Targhee National Forest
1405 Hollipark Drive
Idaho Falls, Idaho 83401
(208) 524-7500
www.fs.usda.gov/cnfr

FOREST SERVICE

U.S.

DEPARTMENT OF AGRICULTURE

OPERATOR RESPONSIBILITIES

Operating a motor vehicle on National Forest System roads, National Forest System trails, and in areas on National Forest System lands carries a greater responsibility than operating that vehicle in a city or other developed setting. Not only must you know and follow all applicable traffic laws, you need to show concern for the environment as well as other forest users. The misuse of motor vehicles can lead to temporary or permanent closure of any designated road, trail, or area. As a motor vehicle operator, you are also subject to State traffic law, including State requirements for licensing, registration, and operation of the vehicle in question.

Motor vehicle use, especially off-highway vehicle use, involves inherent risks that may cause property damage, serious injury, and possibly death to participants. Drive cautiously and anticipate rough surfaces and features, such as snow, mud, vegetation, and water crossings common to remote driving conditions. By your participation, you voluntarily assume full responsibility for these damages, risks, and dangers. Take care at all times to protect yourself and those under your responsibility.

Much of the Palisades Ranger District is remote. Medical assistance may not be readily available. Cellular telephones do not work in many areas of the Palisades Ranger District. Take adequate food, water, first-aid supplies, and other equipment appropriate for the conditions and expected weather.

ALWAYS REMEMBER TO RESPECT PRIVATE LAND! PROTECT YOUR PRIVILEGE. STAY ON DESIGNATED ROADS AND TRAILS AND IN DESIGNATED AREAS.

Read and understand this map in its entirety. If you have questions, please contact the Palisades Ranger District for clarification.

As a motor vehicle operator on a National Forest System road, trail, or area you must comply with this map, as well as all Federal, State, and local laws and regulations. Compliance with these rules is your responsibility.

treadlightly!

LEAVING A GOOD IMPRESSION

In accordance with Federal civil rights law and U.S. Department of Agriculture (USDA) civil rights regulations and policies, the USDA, its Agencies, offices, and employees, and institutions participating in or administering USDA programs are prohibited from discriminating based on race, color, national origin, religion, sex, gender identity (including gender expression), sexual orientation, disability, age, marital status, family/parental status, income derived from a public assistance program, political beliefs, or reprisal or retaliation for prior civil rights activity, in any program or activity conducted or funded by USDA (not all bases apply to all programs). Remedies and complaint filing deadlines vary by program or incident.

Persons with disabilities who require alternative means of communication for program information (e.g., Braille, large print, audiotape, American Sign Language, etc.) should contact the responsible Agency or USDA's TARGET Center at (202) 720-2600 (voice and TTY) or contact USDA through the Federal Relay Service at (800) 877-8339. Additionally, program information may be made available in languages other than English.

To file a program discrimination complaint, complete the USDA Program Discrimination Complaint Form, AD-3027, found online at http://www.ascr.usda.gov/complaint_filing_cust.html and at any USDA office or write a letter addressed to USDA and provide in the letter all of the information requested in the form. To request a copy of the complaint form, call (866) 632-9992. Submit your completed form or letter to USDA by: (1) mail: U.S. Department of Agriculture, Office of the Assistant Secretary for Civil Rights, 1400 Independence Avenue, SW, Washington, D.C. 20250-9410; (2) fax: (202) 690-7442; or (3) email: program.intake@usda.gov.

USDA is an equal opportunity provider, employer, and lender.

PURPOSE AND CONTENTS OF THIS MAP

The designations shown on this motor vehicle use map (MVUM) were made by the responsible official pursuant to 36 CFR 212.51, are effective as of the date on the front cover of this MVUM, and will remain in effect until superseded by next year's MVUM.

It is the responsibility of the user to acquire the current MVUM. This MVUM shows the National Forest System roads, National Forest System trails, and the areas on National Forest System lands on the Palisades Ranger District that are designated for motor vehicle use pursuant to 36 CFR 212.51. This MVUM also identifies the vehicle classes allowed on each route and in each area; and any seasonal restrictions that apply on those routes and in those areas.

Designation of a road, trail, or area for motor vehicle use by a particular class of vehicle under 36 CFR 212.51 should not be interpreted as encouraging or inviting use or implying that the road, trail, or area is passable, actively maintained, or safe for travel. Motor vehicle designations include parking along designated routes and at facilities associated with designated routes when it is safe to do so and when not causing damage to National Forest System resources. Seasonal weather conditions and natural events may render designated roads and trails impassable for extended periods. Designated areas may contain dangerous or impassable terrain. Many designated roads and trails may be passable only by high-clearance vehicles or four-wheel-drive vehicles. Maintenance of designated roads and trails will depend on available resources, and many may receive little maintenance.

This motor vehicle use map identifies those roads, trails, and areas designated for the motor vehicle use under 36 CFR 212.51 for the purpose of enforcing the prohibition at 36 CFR 261.13. This is a limited purpose. The other public roads are shown for information and navigation purposes only and are not subject to designation under the Forest Service travel management regulation.

These designations apply only to National Forest System roads, National Forest System trails, and areas on National Forest System lands.

Legend

- Roads Open to Highway Legal Vehicles
- Roads Open to All Vehicles
- Trails Open to Vehicles 50" or Less in Width
- Trails Open to Motorcycles Only
- Seasonal Designation (See Table)
- Highways, U.S. State
- Other Public Roads
- Other Public Trails
- Short Route Identifier
- FS Campground
- Motorized Trailhead
- Forest or Unit Boundary
- National Forest System Lands on this Ranger District
- Non-National Forest System Lands within this Ranger District
- State Boundary
- Township and Range Lines
- Section Lines
- Lakes and Rivers

EXPLANATION OF LEGEND ITEMS

Roads Open to Highway Legal Vehicles Only:
These roads are open only to motor vehicles licensed under State law for general operation on all public roads within the state.

Roads Open to All Vehicles:
These roads are open to all motor vehicles, including smaller off-highway vehicles that may not be licensed for highway use (but not to oversize or overweight vehicles under State traffic law).

Trails Open to Vehicles 50 inches or Less in Width:
Trails open only to motor vehicles less than 50 inches in width at the widest point on the vehicle.

Trails Open to Motorcycles Only:
These trails are open only to motorcycles. Sidecars are not permitted.

Seasonal Designation:
This symbol, used in conjunction with one of the other road or trail symbols, indicates that the road or trail is open only during certain portions of the year. Refer to Seasonal and Special Designation Table for further instructions.

Other Public Roads and Trails:
Interstate
Highways, U.S. State, County
Other Public Roads
Other Public Trails

These symbols are used to show routes the Forest Service does not have jurisdiction over and has not designated for motorized use. These symbols are part of the reference layers showing connectors to towns and cities outside the forest boundary.

Short Route Identifier:
This symbol is used for roads that are too short to show a symbol type on the map. The symbol contains the number of the road or trail. Users should refer to the corresponding number in the Short Route Table for designation information.

Motorized Trail Access:
This symbol indicates a trailhead for access to a motorized route. Not all motorized routes have trailheads and those that do may range from primitive to developed.

PROHIBITIONS

It is prohibited to possess or operate a motor vehicle on National Forest System lands on the Palisades Ranger District other than in accordance with these designations (36 CFR 261.13).

Violators of 36 CFR 261.13 are subject to a fine of up to \$5,000, imprisonment for up to 6 months, or both (18 U.S.C. 3671(k)). This prohibition applies regardless of the presence or absence of signs.

This map does not display nonmotorized uses, over-snow vehicle uses, or other facilities and attractions on the Palisades Ranger District. Obtain forest visitor information from the local national forest office.

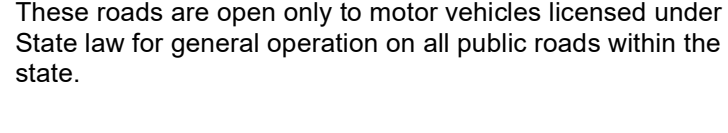
Designated roads, trails and areas may also be subject to temporary emergency closures. As a visitor, you must comply with signs notifying you of such restrictions. A national forest may issue an order to close a road, trail or area on a temporary basis to protect the life, health, or safety of forest visitors or the natural or cultural resources in these areas. Such a temporary and/or emergency closures are consistent with the Travel Management Rule (36 CFR 212.52 (b), 36 CFR 261 subpart B).

The designation "road or trail open to all motor vehicles" does not supersede State traffic law.

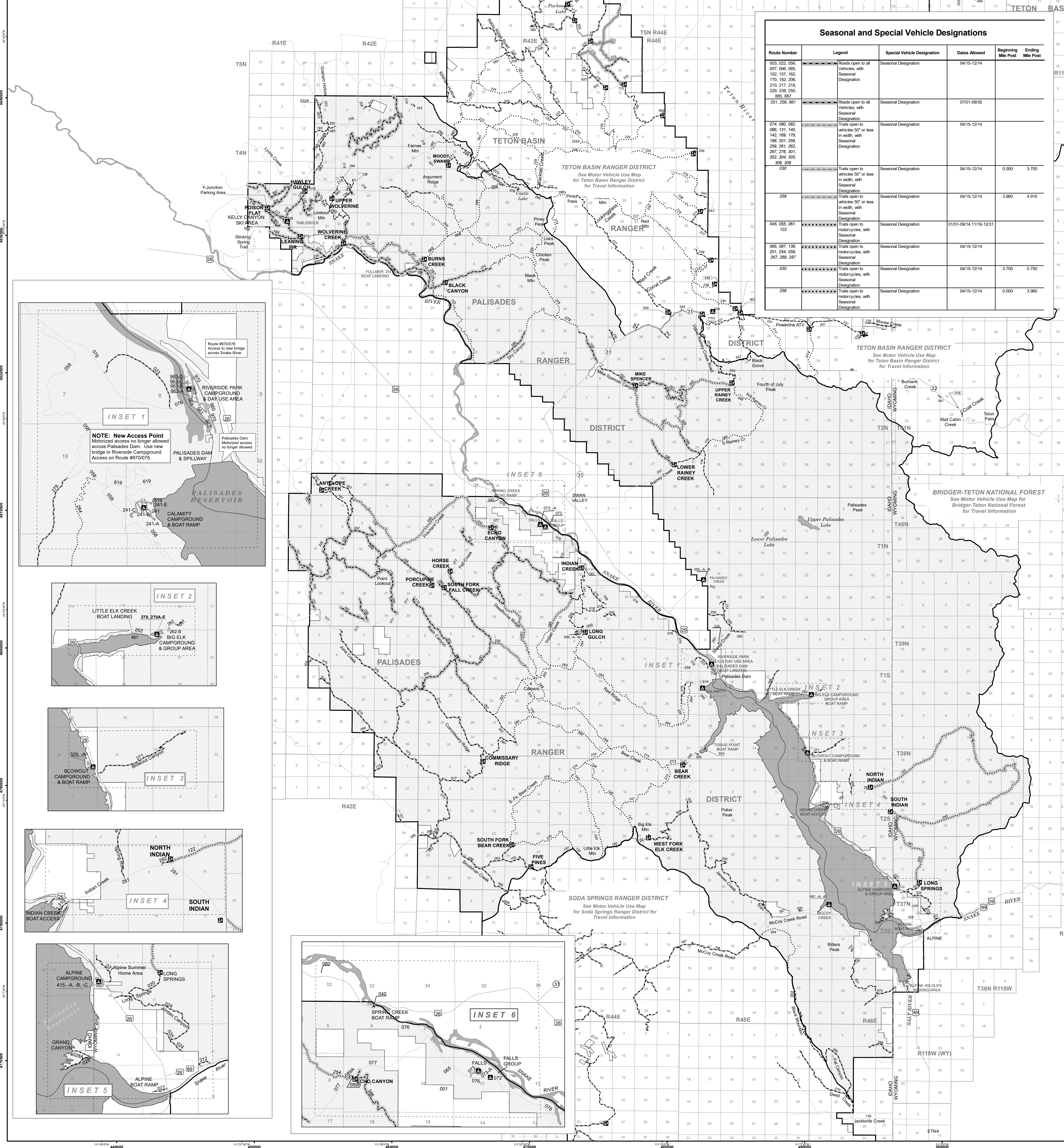
WEBSITE

This map and other Caribou-Targhee National Forest maps are available for download at the website:

www.fs.usda.gov/detail/cnfr/maps-pubs



Scan the QR code to download Motor Vehicle Use Maps for Avenza



Seasonal and Special Vehicle Designations

Route Number	Legend	Special Vehicle Designation	Dates Allowed	Beginning Mile Post	Ending Mile Post
003, 022, 056, 057, 068, 085, 102, 127, 162, 170, 182, 206, 210, 217, 218, 229, 238, 250, 265, 287	Roads open to all Vehicles, with Seasonal Designation	Seasonal Designation	04/15-12/14		
251, 256, 281	Roads open to all Vehicles, with Seasonal Designation	Seasonal Designation	07/01-09/30		
074, 080, 082, 086, 131, 140, 142, 169, 178, 186, 201, 258, 259, 261, 262, 267, 276, 301, 302, 304, 305, 306, 308	Trails open to vehicles 50" or less in width, with Seasonal Designation	Seasonal Designation	04/15-12/14		
030	Trails open to vehicles 50" or less in width, with Seasonal Designation	Seasonal Designation	04/15-12/14	0.000	3.700
258	Trails open to vehicles 50" or less in width, with Seasonal Designation	Seasonal Designation	04/15-12/14	3.960	4.910
045, 055, 061, 122	Trails open to motorcycles, with Seasonal Designation	Seasonal Designation	01/01-09/14, 11/15-12/31		
065, 087, 138, 201, 254, 259, 267, 268, 297	Trails open to motorcycles, with Seasonal Designation	Seasonal Designation	04/15-12/14		
030	Trails open to motorcycles, with Seasonal Designation	Seasonal Designation	04/15-12/14	3.700	5.750
258	Trails open to motorcycles, with Seasonal Designation	Seasonal Designation	04/15-12/14	0.000	3.960