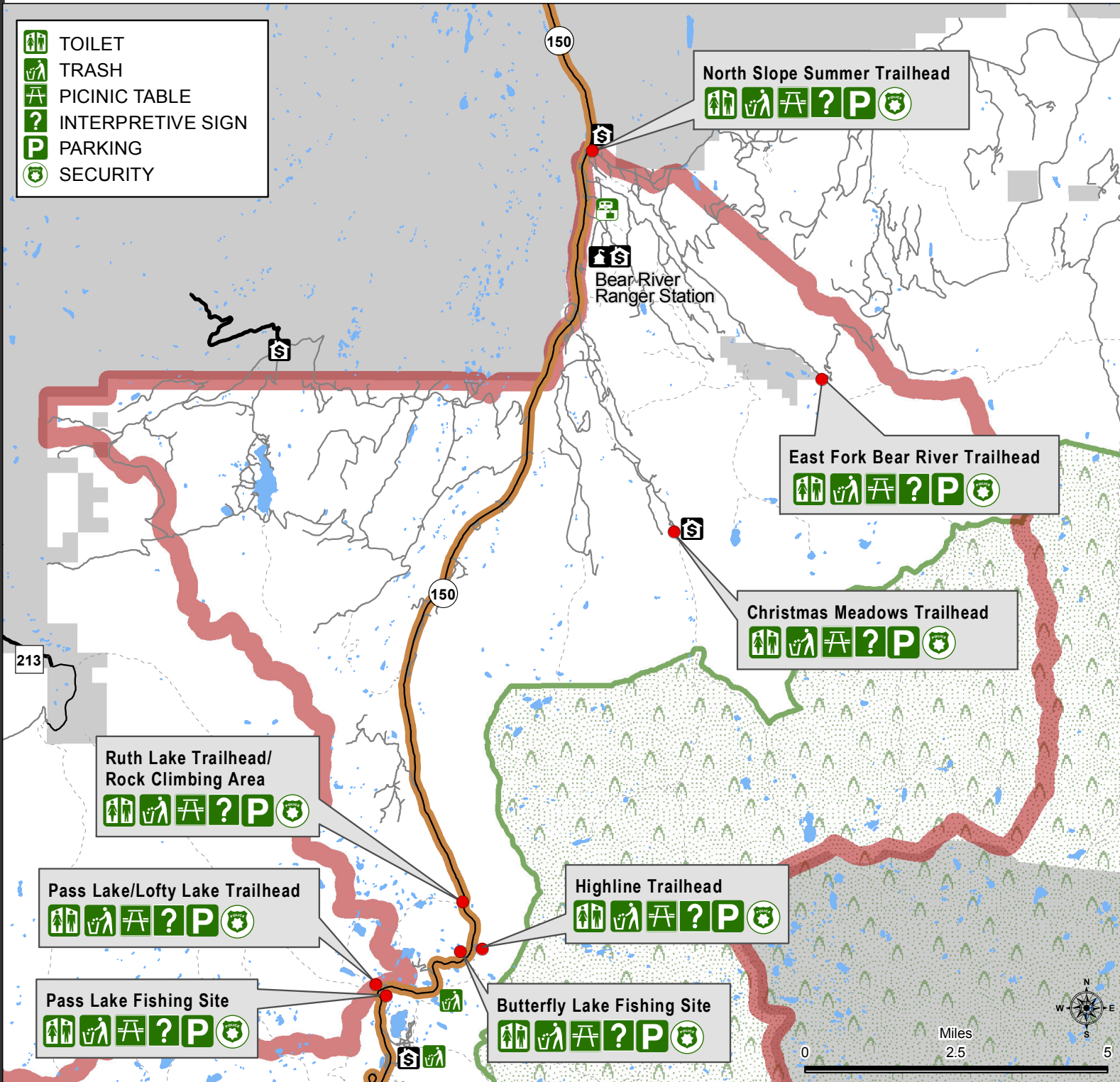




Proposed Changes Mirror Lake Scenic Byway Recreation Fee Program Kamas and Evanston Ranger Districts

- TOILET
- TRASH
- PICNIC TABLE
- INTERPRETIVE SIGN
- PARKING
- SECURITY



Standard Amenity Locations - North

Fee Sites

- PREVIOUS STANDARD AMENITY FEE AREA
- FEE SITE
- FEE STATION

Travel Routes

- SR-150
- MAJOR ROAD
- FOREST ROAD
- NON-MOTORIZED TRAILS

Ownership

- FOREST SERVICE
- OTHER
- WILDERNESS AREA
- WATERBODY
- STREAM/RIVER