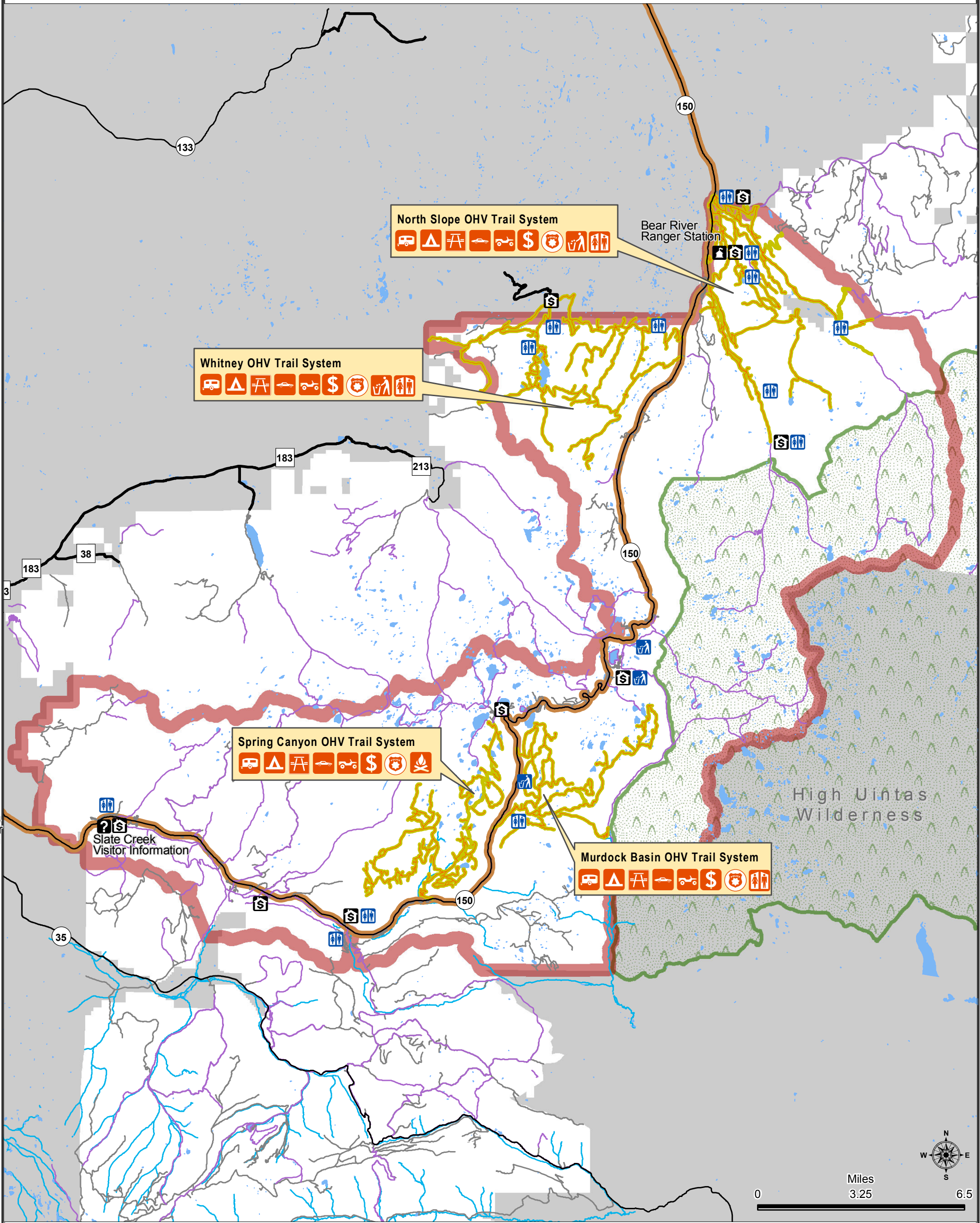




Proposed Changes

Mirror Lake Scenic Byway Recreation Fee Program

Kamas and Evanston Ranger Districts



Special Recreation Permit Sites - Summer

Fee Sites	Travel Routes	Ownership	TRAILER SITES	ACCESS ROADS
PREVIOUS STANDARD AMENITY FEE AREA	SR-150	FOREST SERVICE	TENT SITES	FEE COLLECTION BY FS
FEE STATION	MAJOR ROAD	OTHER	PICNIC TABLE	SECURITY
ROADS OR MOTORIZED TRAILS WITH FEE	FOREST ROAD	WILDERNESS AREA	DRINKING WATER	TRASH CONTAINER
	NON-MOTORIZED TRAILS	WATERBODY	ACCESS ROADS	TOILET
	NO FEE MOTORIZED TRAIL	STREAM/RIVER		SIMPLE CAMPFIRE DEVICES

Map by: D.A./L. Smith using ArcMap 10.0. Data Source: USFS Corporate GIS database. Disclaimer: The Forest Service uses the most current and complete data available. GIS data and product accuracy may vary. They may be developed from sources of differing accuracy, accurate only at certain scales, based on modeling or interpretation, incomplete while being created or revised etc. Using GIS products for purposes other than those, for which they were created, may yield inaccurate or misleading results. Updated Sept. 27, 2013.