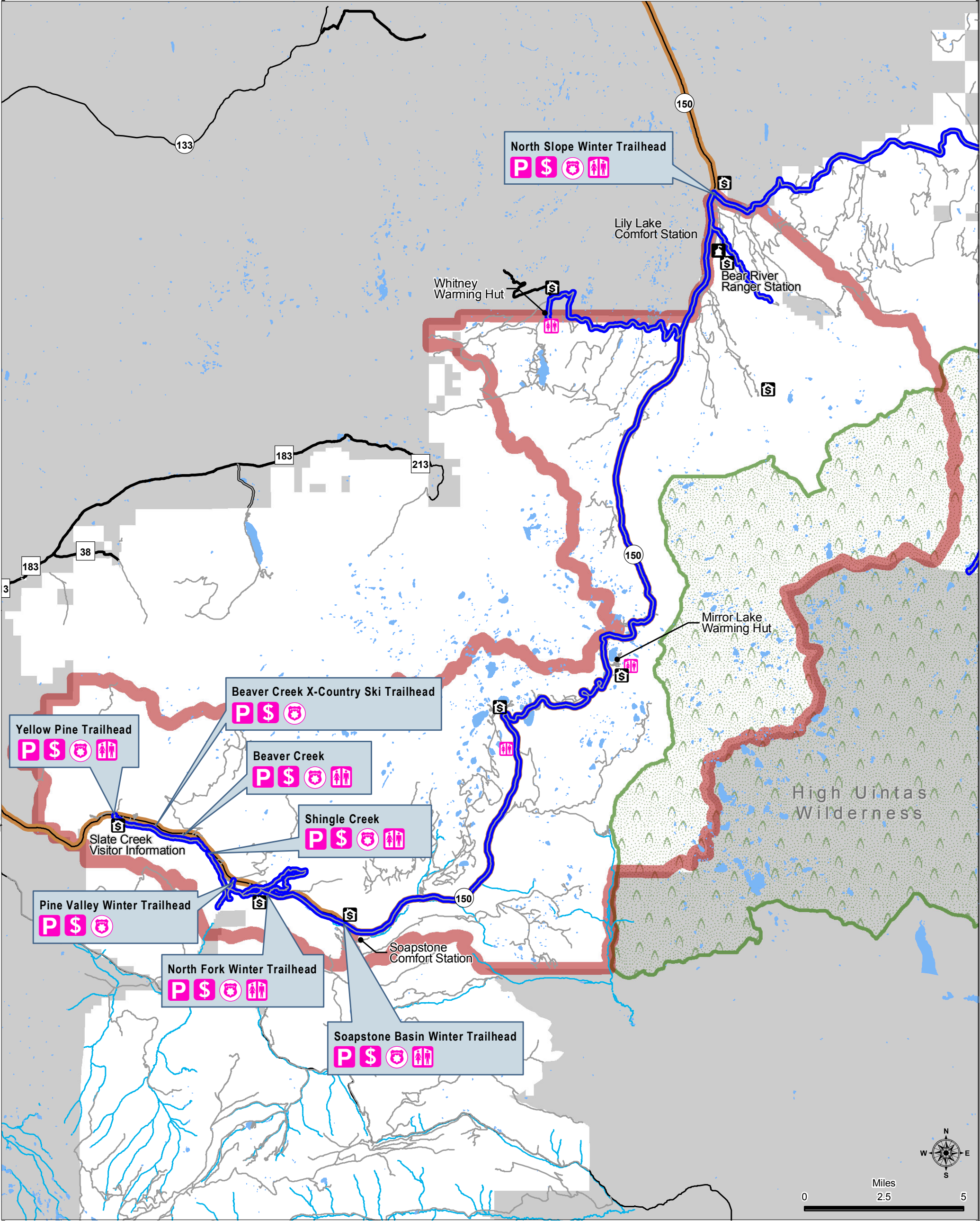




# Proposed Changes

## Mirror Lake Scenic Byway Recreation Fee Program

### Kamas and Evanston Ranger Districts



## Special Recreation Permit Sites - Winter

<b>Fee Sites</b>	<b>Travel Routes</b>	<b>Ownership</b>	<b>Waterbody</b>	<b>Icons</b>
PREVIOUS STANDARD AMENITY FEE AREA	SR-150	FOREST SERVICE	WATERBODY	PARKING
FEE STATION	MAJOR ROAD	OTHER	STREAM/RIVER	FEE COLLECTION
GROOMED SKI & SNOWMOBILE TRAILS	FOREST ROAD	WILDERNESS AREA		SECURITY
	NON-MOTORIZED TRAILS			TOILET

Map by: D.A.S/L. Smith using ArcMap 10.0. Data Source: USFS Corporate GIS database. Disclaimer: The Forest Service uses the most current and complete data available. GIS data and product accuracy may vary. They may be developed from sources of differing accuracy, accurate only at certain scales, based on modeling or interpretation, incomplete while being created or revised etc. Using GIS products for purposes other than those, for which they were created, may yield inaccurate or misleading results. Updated Sept. 27, 2013.