

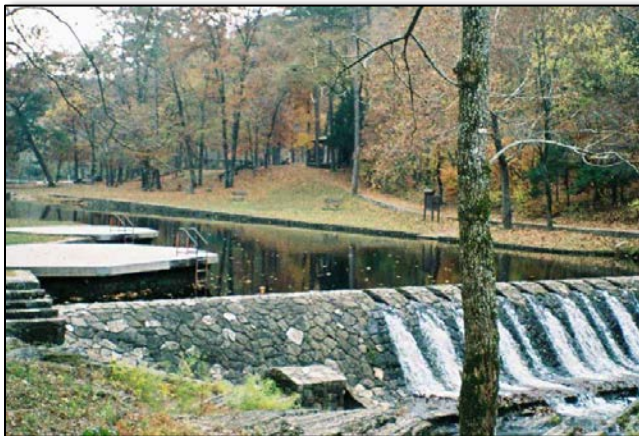
Recreation Program Fee Accomplishment Report 2013



Recreation fees are an investment in outdoor recreation. Current and future generations will benefit as 95% of the funds are reinvested in the facilities and services that visitors enjoy, use, and value.

Accomplishments Provided with Recreation Fees:

- Supported cooperative law enforcement agreements with county agencies in Oklahoma and Arkansas to provide additional security patrols in developed recreation fee areas.
- Completed operation and maintenance tasks, such as grounds maintenance, facility cleaning, hazard tree and trash removal at five developed recreation fee sites.
- Contracted manure removal at Cedar Lake Equestrian Camp, the most frequented equestrian campground in Oklahoma.
- Supported repair and enhancement of Lake Sylvia Campground's septic system and installed new, accessible water hydrants.
- Performed routine maintenance: Cleaned fire rings, refurbished information and trail signs, and maintained chlorination tanks and swim areas.
- Funded water quality sampling at day use swimming areas.
- Provided several nature/interpretive programs at Shady Lake Campground.
- Funded portable restroom facilities at Winding Stair Campground along the Talimena National Scenic Byway during a water shortage.
- Purchased new control panel and pumps for Cedar Lake Recreation Area waste water treatment plant.



The Charlton Recreation Area swimming site is breathtaking year-round.

Special Feature

For the second year in a row, the 78-acre Cedar Lake, namesake of the Cedar Lake Recreation Area, produced the state of Oklahoma's record largemouth bass. Dale Miller of Panama, Oklahoma, landed a largemouth bass that weighed 14 pounds, 13.7 ounces. What a beauty!



Ouachita National Forest
Revenue & Expenditures

Revenue	
Source	Amount
Recreation Fees	\$185,412
Special Uses	\$6,891
Interagency Pass	\$8,110
Total	\$200,413

Expenditures*	
Source	Amount
Maintenance & Repair	\$182,055
Visitor Services	\$24,825
Cost of Collections	\$38,617
Law Enforcement	\$30,343
Habitat Restoration	\$0
Total	\$275,840

*Expenditures may be funded with previous years' revenue.

Additional Ouachita Accomplishments

- Supplemented funds for the purchase of new regulatory signage at several fee recreation areas.
- Supported lake drawdowns and cleanings at Charlton Recreation Area and Lake Sylvia Recreation Area.
- Trained and supported campground host volunteers in operations and maintenance procedures.



On a hot July day, there is no place better in Perry County, Arkansas to cool off than Lake Sylvia.

Beautiful Cedar Lake



Information:

Ouachita National Forest
Recreation Fee Program Contact

501-321-5253

Email:

cpham@fs.fed.us

Online:

www.fs.usda.gov/ouachita

Regional Contact

404-347-2769

Email:

akoopman@fs.fed.us

The USDA is an equal opportunity provider and employer.



Southern Region Revenue & Expenditures

Revenue*

Source	Amount
Recreation Fees	\$6,479,888
Special Uses	\$1,152,109
Interagency Pass	\$127,697
Total	\$7,759,694

Expenditures

Source	Amount
Maintenance & Repair	\$5,474,823
Visitor Services	\$1,286,415
Cost of Collections	\$1,041,298
Law Enforcement	\$209,840
Habitat Restoration	\$1,570
Fee Agreements	\$0
Total	\$8,013,946

*Carryover funds will be used for large projects and the following season's startup costs.