



Prescott National Forest
Bradshaw Ranger District
928 443-8000
<http://www.fs.fed.usda.gov/prescott>



RANCH TRAIL #62

GENERAL INFORMATION: A 1/2 mile section of the Ranch Trail #62 is part of the 50 mile Prescott Circle Trail. The Ranch Trail begins in manzanita, pinyon pine, mountain mahogany, and low-growing shrub oak. It climbs steadily to its junction with Boy Scout Trail #126, where Government Canyon lies to the west. From here TR continues its ascent, offering panoramic views of Lynx Lake, Prescott Valley, Bill Williams Mountain, and the San Francisco Peaks. One can sometimes spot mule deer, Abert's squirrels, and wild turkeys at the trail's higher elevations. TR 62 enters ponderosa pine forest before coming to an end at the motorized Sevenmile Gulch Trail #9854. The eastern portion of TR 9854 travels down to Walker Road, while the western end connects with motorized Watershed Trail #299. TR 299 travels roughly 3 miles before it reaches Senator Highway.

CAUTION: This trail is open to hikers, horseback riders, and mountain bicycles. Please be considerate of others—slow down and know when to yield the trail.

ACCESS AND TRAILHEAD LOCATION: Travel east on Hwy 69 to Walker Road. Turn right and travel 0.6 miles to the trailhead on the right. The trailhead is signed. There is a large parking area with room for 12 vehicles on the south side and up to 10 horse trailers on the north side.

TRAVEL TIME: 20 minutes from Prescott

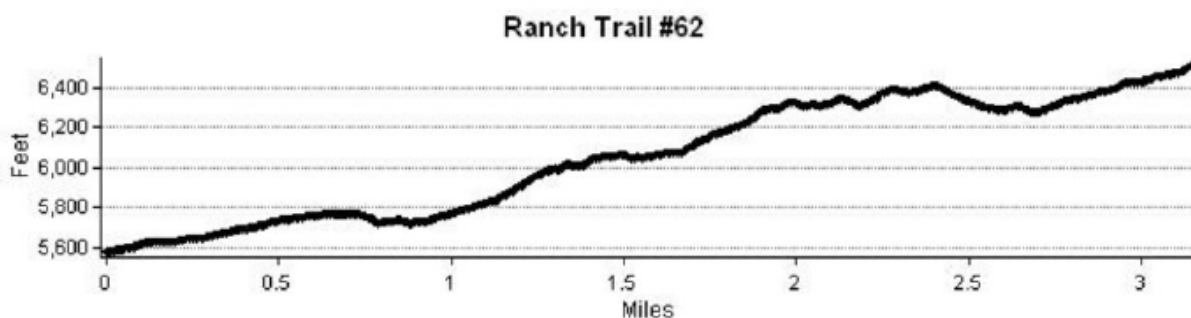
ROAD CONDITIONS: Paved

HIKING TIME: 2 hours, one-way **LENGTH:** 3.2 miles **DIFFICULTY:** Difficult **USE:** Moderate

NOTES: This trail is open to hikers, horseback riders, and mountain bicyclists. Please be considerate of other users—slow down and know when to yield the trail. Refrain from using horses and bikes when the trail is wet. Drinking water is not available at the trailhead or on the trail.

RECOMMENDED SEASONS OF USE: Spring, summer, fall, winter

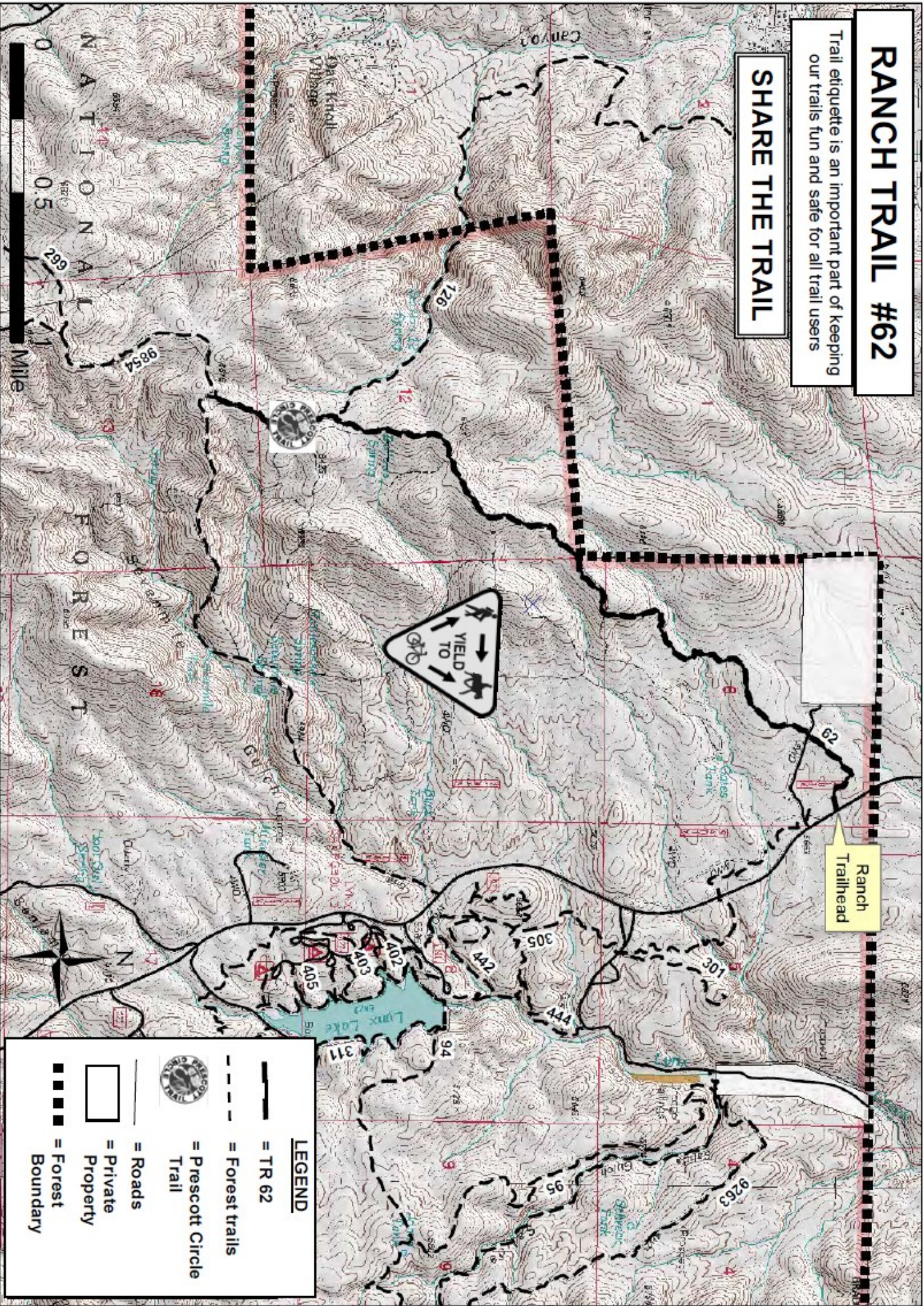
MAPS, OTHER RESOURCES: Prescott National Forest Map, west half; U.S.G.S. topographic quads for Prescott and Groom Creek, National Geographic Trails Illustrated Map Bradshaw Mountains, City of Prescott Trails and Outdoor Recreation Map. Yavapai Trails Association online version of the Prescott Circle Trail Guide at: http://yavapai-trails.org/Resources/prescott_circle_trail.html



RANCH TRAIL #62

Trail etiquette is an important part of keeping our trails fun and safe for all trail users

SHARE THE TRAIL



| LEGEND | |
|--------|-------------------------|
| | = TR 62 |
| | = Forest trails |
| | = Prescott Circle Trail |
| | = Roads |
| | = Private Property |
| | = Forest Boundary |
| | |

Disclaimer: The USDA Forest Service uses the most current and complete data available. GIS data and product accuracy may vary. The USDA Forest Service reserves the right to correct, update, modify, or replace GIS products without notification. This map is not accurate for navigation or for legal boundary purposes. The USDA Forest Service assumes no responsibility for the interpretation or application of this data by others. Map prepared by Prescott National Forest. 1/21/2014