



Buttermilk Hill Trail



Buttermilk Hill Trail offers nice views of Kinkaid Lake as it meanders along the side of Buttermilk Hill. In autumn, the hills surrounding Kinkaid Lake are alive with color as the maple, hickory and oak trees change to brilliant red, orange and yellow. Part of the larger Kinkaid Lake Trail System, Buttermilk Hill Trail is not a loop trail, and portions of the trail are narrow and steep. A destination along the trail is Buttermilk Hill picnic area, which is only accessed via the trail or by boat. Serving as a scenic resting spot along the trail, the picnic area has been a favorite of boaters for many years.

Know before you go:

- Carry plenty of water or boil/treat water before drinking.
- Cell phone reception may be weak or non-existent.
- Be aware of hunters during hunting season.
- Be aware of changing weather conditions.
- Venomous snakes and poison ivy are present in the area.
- The trail tread may become slick when wet, especially rock surfaces.

Other Attractions

Johnson Creek Recreation Area, Lake Murphysboro State Park.

Length: 7.9 miles

Trail Surface: Dirt/Natural

Trail Markings:

See map on reverse side for trail numbers. Some trail junctions have signs.

Trail Difficulty: Moderate to Difficult

Recommended Season: Spring and fall

Parking: Most trailheads have limited parking space. Crisenberry Dam access has a large parking lot along North Spillway Road (about 1/2 mile from the trail access point).

Access to Buttermilk Hill is either hike-in or by boat access only.

Directions:

From Murphysboro:

Buttermilk Hill Trailhead: Take Hwy 149 west 7 miles to Hwy 3, then north 2.75 miles on Hwy 3 to Buttermilk Hill Rd. Turn north, then east on Taylor Rd.

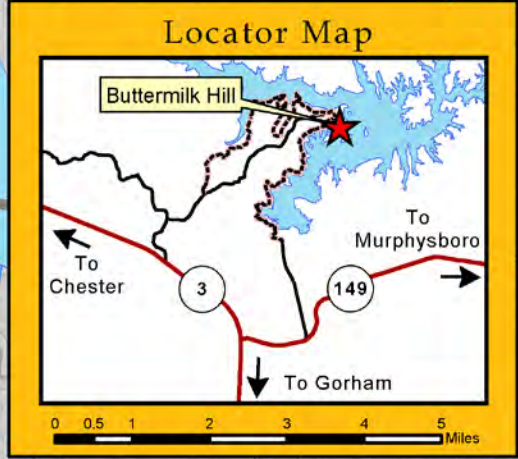
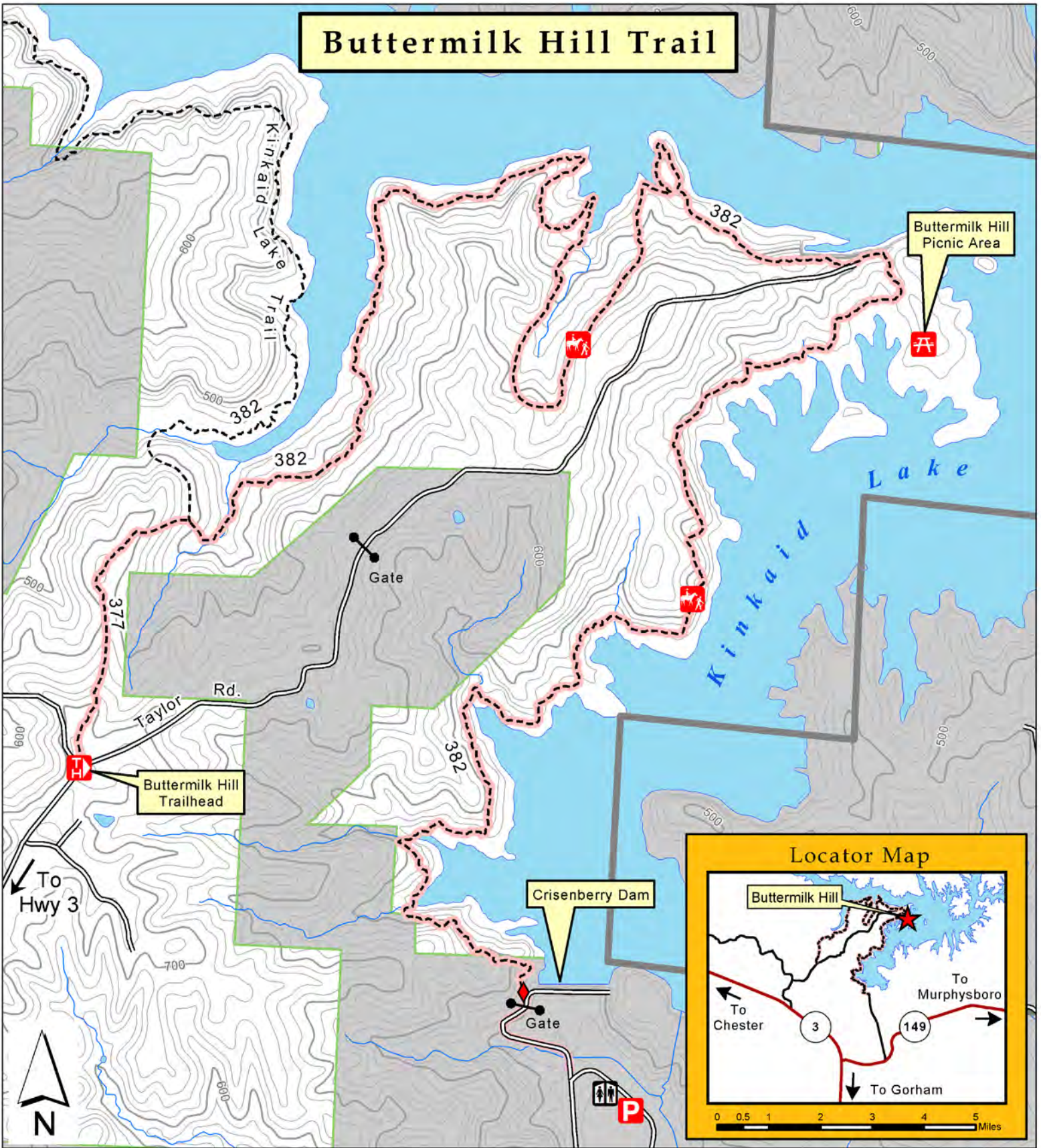
Crisenberry Dam Trail Access: Take Hwy149 west 6.25 miles, turn north onto Spillway Road, go 1 1/2 miles. The road deadends at Crisenberry Dam gate. The trail can be accessed just north of the gate.

Safety: Summertime brings pests, such as mosquitoes, biting flies, wasps, chiggers and ticks. Carry plenty of water or be prepared to treat or filter water taken from streams. Be aware of hunters during hunting season. Poison ivy is present along the trails.

Trail Ethics: Practice Leave No Trace ethics (Int.org). Stay on designated trails. Hikers yield to equestrians. No camping within 150 feet of Kinkaid Lake. Camp away from trails and other visitors. In popular areas use existing campsites.



Buttermilk Hill Trail



Legend

- Point of Access
- Trailhead
- Hiker/Equestrian Trail
- Picnic Area
- Restroom
- State Highway
- Road
- Hiker/Equestrian Trail
- Buttermilk Hill Trail
- Stream
- National Forest Land
- Non-National Forest Land
- Forest Boundary

Contour interval = 20 feet

