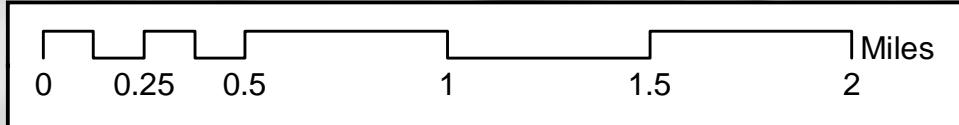
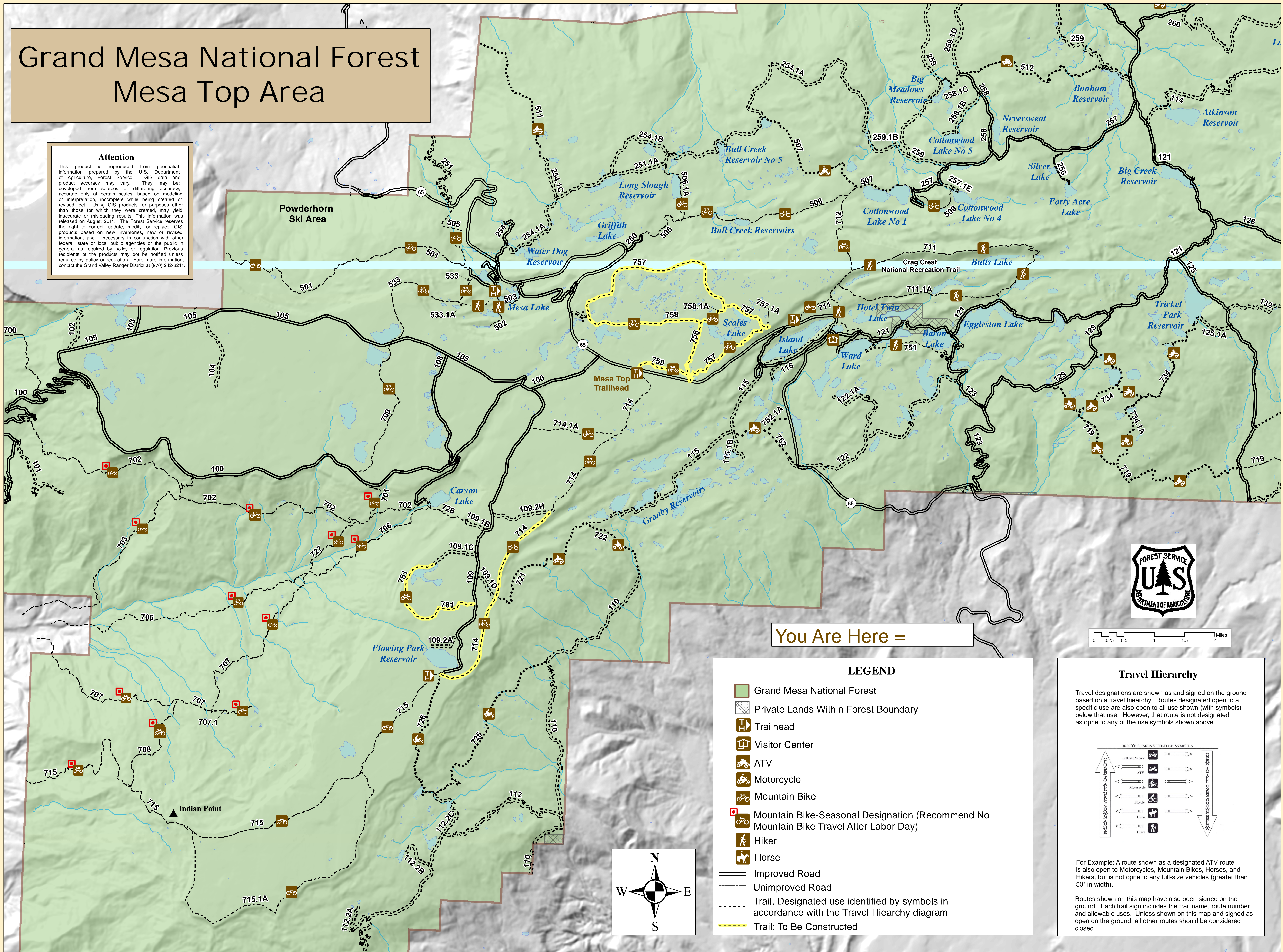


# Grand Mesa National Forest

## Mesa Top Area

### Attention

This product is reproduced from geospatial information prepared by the U.S. Department of Agriculture, Forest Service. GIS data and product accuracy may vary. They may be developed from sources of differing accuracy, accurate only at certain scales, based on modeling or interpretation, incomplete while being created or revised, ect. Using GIS products for purposes other than those for which they were created, may yield inaccurate or misleading results. This information was released on August 2011. The Forest Service reserves the right to correct, update, modify, or replace, GIS products based on new inventories, new or revised information, and if necessary in conjunction with other federal, state or local public agencies or the public in general as required by policy or regulation. Previous recipients of the products may not be notified unless required by policy or regulation. For more information, contact the Grand Valley Ranger District at (970) 242-8211.



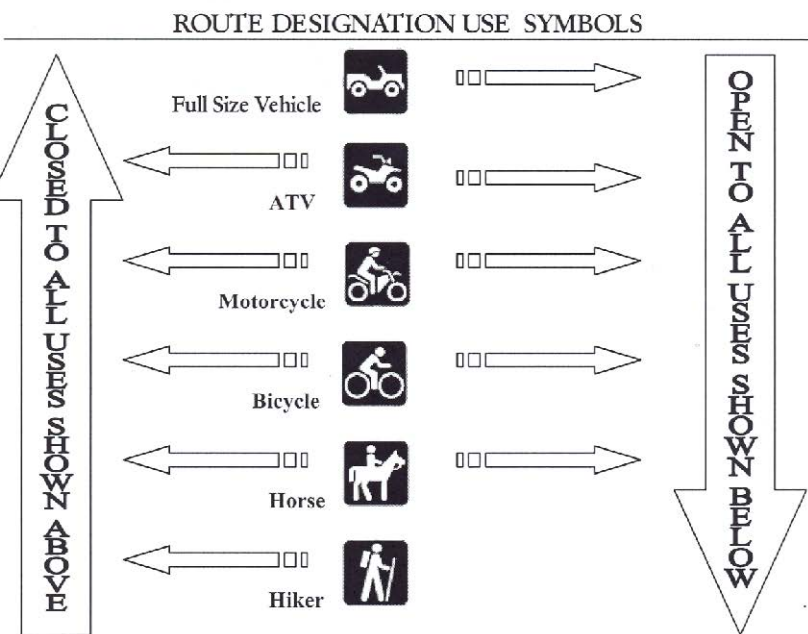
You Are Here =

### LEGEND

- Grand Mesa National Forest
- Private Lands Within Forest Boundary
- Trailhead
- Visitor Center
- ATV
- Motorcycle
- Mountain Bike
- Mountain Bike-Seasonal Designation (Recommend No Mountain Bike Travel After Labor Day)
- Hiker
- Horse
- Improved Road
- Unimproved Road
- Trail, Designated use identified by symbols in accordance with the Travel Hierarchy diagram
- Trail; To Be Constructed

### Travel Hierarchy

Travel designations are shown as and signed on the ground based on a travel hierarchy. Routes designated open to a specific use are also open to all use shown (with symbols) below that use. However, that route is not designated as open to any of the use symbols shown above.



For Example: A route shown as a designated ATV route is also open to Motorcycles, Mountain Bikes, Horses, and Hikers, but is not open to any full-size vehicles (greater than 50" in width).

Routes shown on this map have also been signed on the ground. Each trail sign includes the trail name, route number and allowable uses. Unless shown on this map and signed as open on the ground, all other routes should be considered closed.