



Camp Cadiz Campground



Camp Cadiz was one of 13 Civilian Conservation Corps camps operating in southern Illinois between 1934 to 1940. During that time, more than 140 men called Camp Cadiz home. They reforested and restored the natural ecosystem. CCC workers also were responsible for staffing fire towers, building roads, trails and recreation facilities. Camp Cadiz enrollees built the nearby Pounds Hollow Recreation Area, the first recreation area built in the Shawnee National Forest.

Camp enrollees spent their spare time writing home, playing baseball and taking the occasional trip to town. Today, all that remains of the camp are two stone fireplaces from the camp barracks.

Things to do

Camp Cadiz is a small campground, located off-the-beaten-path. The campground offers primitive camping but accommodates trailers up to 30 feet. Each campsite has a table, fire ring, picnic table and lantern pole. Water sources and vault toilets are centralized within the campground. The campground also is designated for use by equestrians and their stock.

Camp Cadiz provides easy access to the River to River Trail and Beaver Trail via the trailhead located just north of the campground. Both of these trails provide great opportunities for backpacking, hunting and horseback riding.

Other Attractions

Rim Rock National Recreation Trail, Ohio River National Scenic Byway, High Knob, Garden of the Gods Recreation Area, Pounds Hollow Recreation Area and River to River Trail

Directions:

From Harrisburg, Illinois: Take Hwy 13 east 14 miles to Hwy 1. Take Hwy 1 south 15 miles, to Camp Cadiz Rd. Turn west on Camp Cadiz Rd and go 2 miles to the campground entrance.

From Evansville, Indiana: Take Hwy 62 west to Illinois Hwy 141 and continue west to Hwy 1. Take Hwy 1 south 30 miles to Camp Cadiz Rd. Turn west on and go 2 miles to the campground entrance.

Facilities: 8 campsites (non-electric), centralized water spigot and vault toilets. Equestrian camping allowed.

Season of Operation:

Campground is open year- round.

Camping Fee: \$10 /night

Regulations:

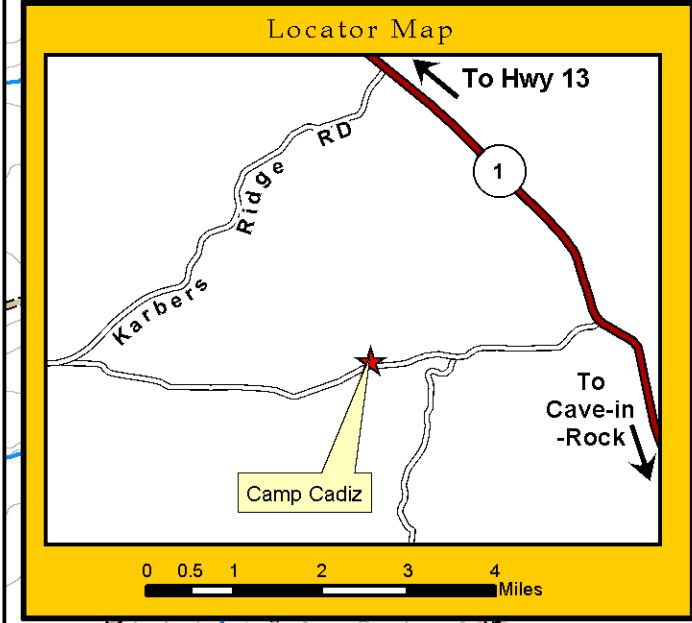
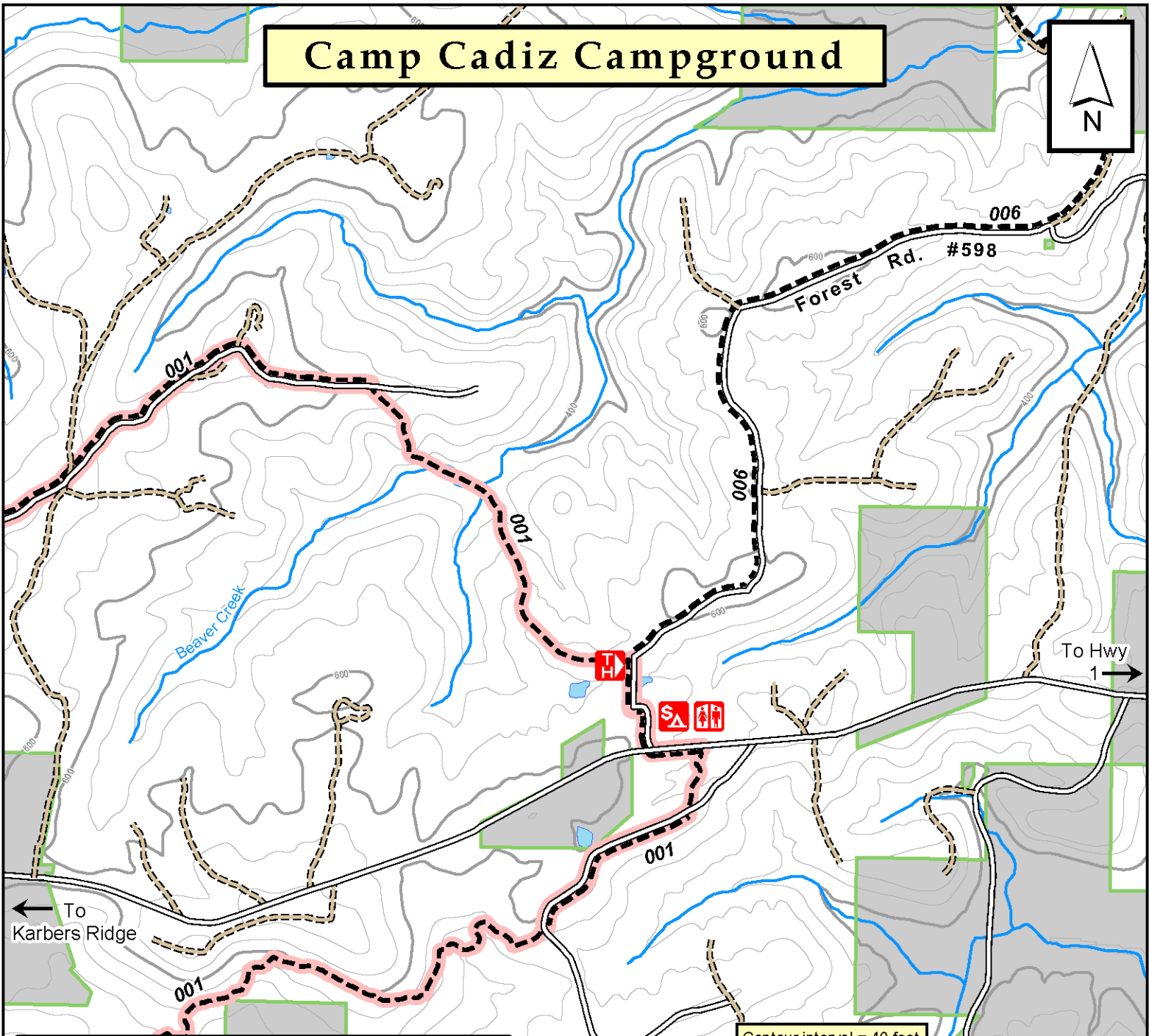
1. No reservations. Campsites are available on a first-come, first-serve basis.
2. Camping allowed at designated sites only. There is a maximum of 2 tents, 8 people and 2 vehicles allowed per campsite.
3. Quiet hours are 10 p.m. to 6 a.m.
4. Pets must be leashed.
5. Equestrian camping is allowed.

For your safety, the recreation area is patrolled by forest employees and law enforcement officers.

In the event of an emergency, call 911.



Camp Cadiz Campground



Road conditions vary widely, many are not passable by motor vehicle

Contour interval = 40 feet

Legend

jlvaughn 2014

	Camp Cadiz Campground		Hiker/Equestrian Trail
	Trailhead		River to River Trail
	State Highway		Stream
	Road		National Forest Land
	Unimproved Road		Non-National Forest Land

0 0.25 0.5 1 Miles