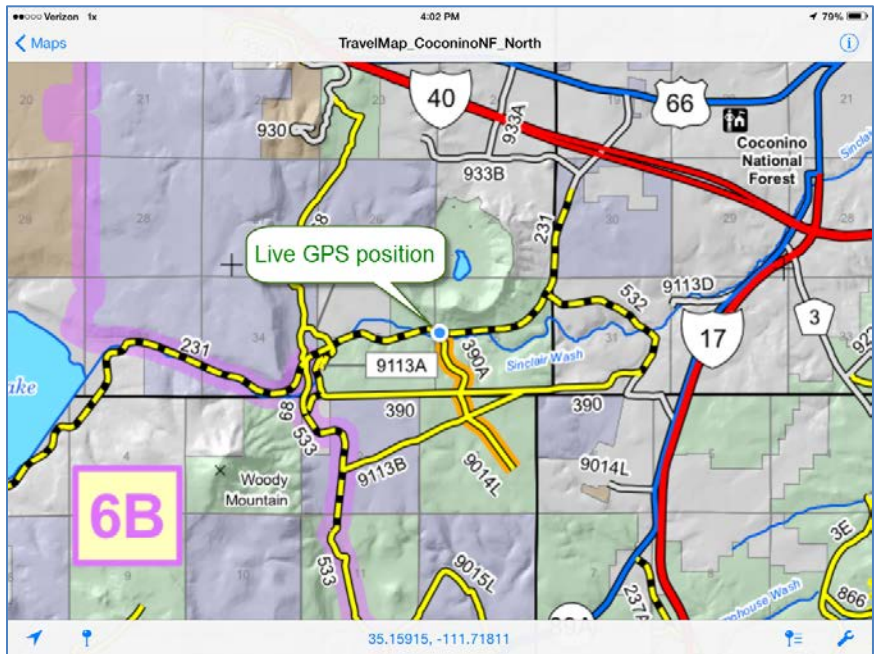


Install A GPS-Enabled Coconino National Forest Travel Map On Your Smartphone Or Tablet*

Background - You can install a free mobile version of Coconino National Forest's Motor Vehicle Use Map (MVUM) on your smartphone or tablet. Just like the black and white MVUM, this color **Travel Map** identifies the roads, trails, and areas designated for public motor vehicle use on Coconino National Forest lands, but it also includes topography, recreation sites, hunting unit boundaries, hiking trails, and more. Best of all, it lets you know exactly where you are while traveling.

Install and use your Travel Map in just three easy steps.



Step 1. Get the app - Install the **Avenza Maps** app on your smartphone or tablet. The app is available free from the Apple Store (iPhones and iPads), or from the Google Play Store (Android smartphones and tablets), and its icon is illustrated at right. Type "Avenza Maps" into the app store's search function to locate and install the app. An Apple or Google account ID and password may be required to install apps.



Step 2. Get the map – Follow these steps to install the Travel Map.

- Open the **Avenza Maps** app and press the **+** (Add Map) button
- Press the **Download or import a map** button in the lower-right of the **Maps** page for Android devices (skip this step for iPhone devices).
- Press the stylized **QR code** button in the upper-right of the **Add Map** page.
- Scan the QR code at right, and then press the "**Get this Map**" button and the "**FREE**" button in sequence to accept the installation. A WiFi connection is recommended during the download and installation.
- Be patient as the north-half and south-half maps download and install.



The map content provided by Coconino National Forest is free, but your wireless carrier may assess a data service charge if you use a 3G/4G connection instead of using WiFi.



More →

* Android devices require operating system 4.4, or higher. Apple devices require operating system 8.1, or higher.


Step 3. Get going! – Open the Avenza Maps app, and touch a map’s entry on the **Maps** page to activate the map. WiFi or 3G/4G coverage is not necessary for map use, as all map content is cached on the device. Users may pan, zoom out, or zoom in using standard multi-touch gestures.


On-screen appearance of the Avenza Maps app differs slightly between Apple and Android devices, so refer to the following guidance for your device.

Apple iPhone or iPad - GPS positioning is active when a blue dot (the GPS position) is visible on-screen.



 These two buttons toggle GPS functionality on and off. When the button at left is active (recommended), the map view automatically remains centered on the current GPS position as you travel. The button at right becomes active when a user manually zooms or pans the map’s cross-hairs away from the current GPS position. Press the button to toggle back and forth between the two functionalities. 

35.18650, -111.67436 This button displays the map’s cross-hair coordinates. Touch it to change the display format of coordinate values.


 Touch this button to delete a map, edit its name, or view map information.


 **Maps** This button returns a user to the list of maps on the **Maps** page.

Android smartphone or tablet - GPS positioning is active when a blue dot (the GPS position) is visible on-screen.

 These two buttons toggle GPS functionality on and off. When the button at left is active (recommended), the map view automatically remains centered on the current GPS position as you travel. The button at right becomes active when a user manually zooms or pans the map’s cross-hairs away from the current GPS position. Press the button to toggle back and forth between the two functionalities. 

35.17162, -111.68262 This button displays the map’s cross-hair coordinates. Touch it to change the display format of coordinate values.

 Touch this button to delete a map, edit its name, or view map information.

 This button returns a user to the list of maps on the **Maps** page.

Things to know about the Travel Map – Be aware of these Travel Map characteristics.

- For best results, Android users may need to change their **PDF resolution on import** setting from **Auto-detect** to **150 dpi**. Browse to **Settings – General Settings** on your device to make this change.
- Adjusting the Travel Map while driving is a hazard to you, and to others. Don’t be a distracted driver. Pull over in a safe location if Travel Map adjustments, or extended viewing, are required.
- WiFi-only tablets cannot provide true GPS positioning service. Only devices with 3G/4G capability are able to provide true GPS positioning, even in the absence of 3G/4G coverage.
- GPS positioning consumes more power than normal operation, so use of a power adapter approved for your device is recommended.
- The map’s feature labels are static and, in some situations, could be hidden off-screen.
- Travel Map functionality could be compromised if steeply rising terrain, dense vegetation, or other overhead obstructions significantly degrade GPS reception.
- Revised maps are released on April 15 each year, so remember to update your maps when they expire.