



Webinar starts at 4 p.m.

US Forest Service

Pacific Southwest Region

Lake Tahoe Basin Management Unit





Wild and Scenic River Evaluation

US Forest Service

Pacific Southwest Region

Lake Tahoe Basin Management Unit





Wild and Scenic River Evaluation

Background

- ❖ Forest Plan Revision – Nov. 2013
 - *Publication of FEIS, Plan, draft ROD*
- ❖ 1999 Eight Eastside Rivers WSR Study Report
 - *Recommended Upper Truckee – Wild River*
- ❖ Objections → Reviewing Officer Instructions





Wild and Scenic River Evaluation

Instructions

1. Complete comprehensive evaluation and systematic inventory
 - Include final eligibility
 - Include preliminary classifications (wild, scenic, recreational)
 - Truckee River and Upper Truckee documentation adequate
2. LTBMU not required to complete suitability study – LMP will protect eligible river corridors.
3. If LTBMU decides to complete suitability – must comply w/ policy
4. If LTBMU decides to delay suitability – LMP must protect eligible river corridors





Wild and Scenic River Evaluation

Plan Revision Process

1. Follow instructions
2. Revise FEIS & Plan as necessary
3. Issue Final Record of Decision





Wild and Scenic River Evaluation

WSR Process

Follows Policy – FSH 1909.12 Chapter 80

Three Step

1. Determine eligibility
 - Free flowing
 - Outstanding Remarkable Value (ORV)
2. Assigning potential classification (wild, scenic, or recreational)
3. Determining suitability





Wild and Scenic River Evaluation

Inventory

- Geographic Information System (GIS) – National Hydrography Database - LTBMU
- 7.5' Quadrangle topographic maps - named rivers/creeks
- Friends of the River website
- Added Eagle Creek





Wild and Scenic River Evaluation

Outstanding Remarkable Values

Interdisciplinary Team

Scenery

Recreation

Geology

Fish

Wildlife

Prehistory

History





Wild and Scenic River Evaluation

Outstanding Remarkable Values

1. Located in the river or immediate shorelands
2. Contribute substantially to the functioning of the river ecosystem
3. Owe their existence to the presence of the river





Wild and Scenic River Evaluation

Region of Comparison

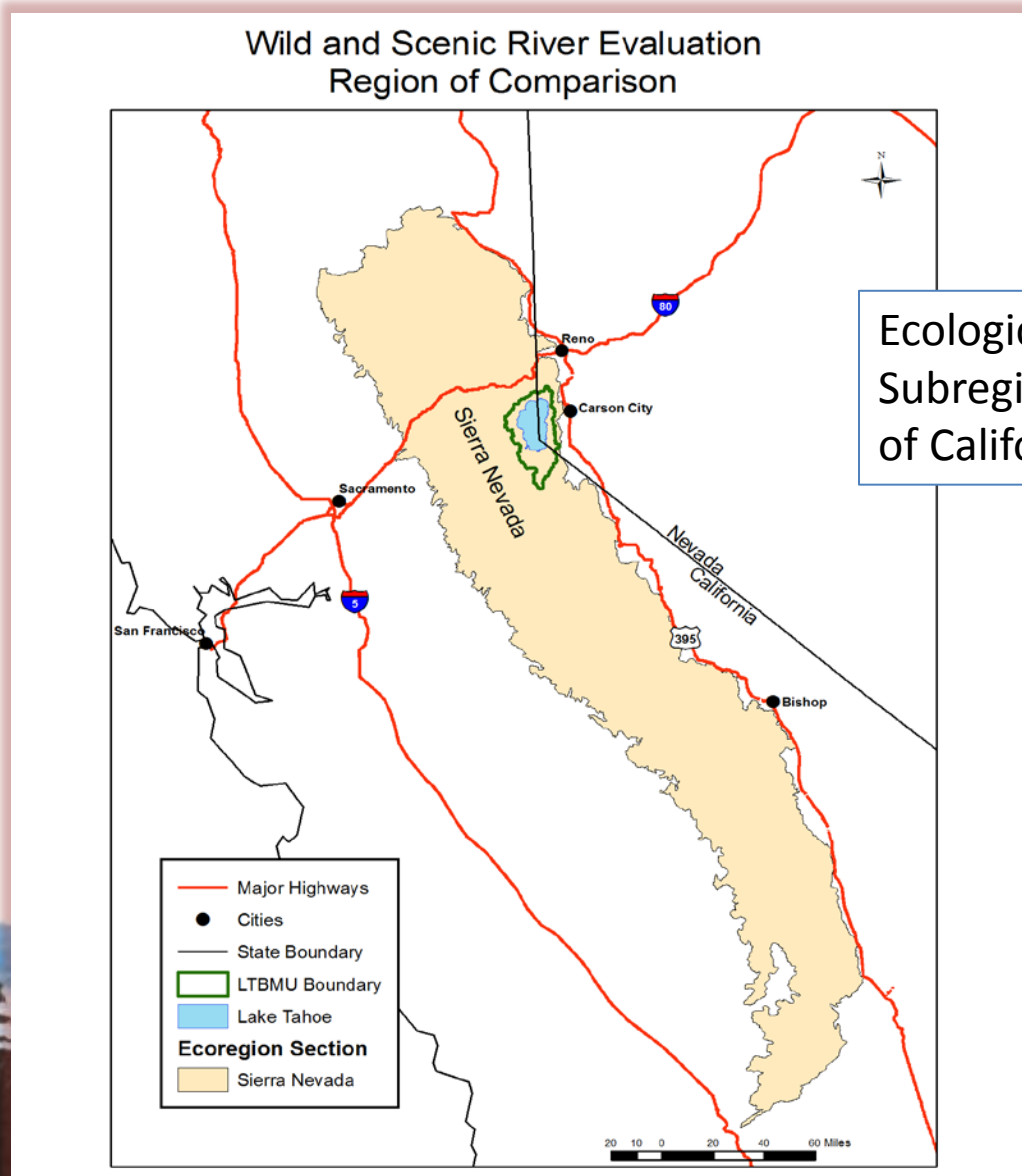
National

Regional





Wild and Scenic River Evaluation





Wild and Scenic River Evaluation

Outstanding Remarkable Values

Potential ORV Table

Eagle Creek – Geology/Hydrology, Scenic, Recreation

Glen Alpine Creek – Aquatic

Taylor Creek – Scenic, Heritage, Wildlife, Recreation





Wild and Scenic River Evaluation

Criteria

Free Flowing





Wild and Scenic River Evaluation

Comments

- Most helpful by April 10, 2015
- Is our inventory complete?
- Did we capture all the ORVs? If not, what did we miss? And what makes it Nationally or Regionally important?





Wild and Scenic River Evaluation

Comments

comments-pacificsouthwest-ltbmu@fs.fed.us

Further information:

Mike LeFevre (530) 543-2840, email: mlefevre@fs.fed.us





Wild and Scenic River Evaluation

Comments

Questions?

