




Legend


Big Game Crucial Winter Range

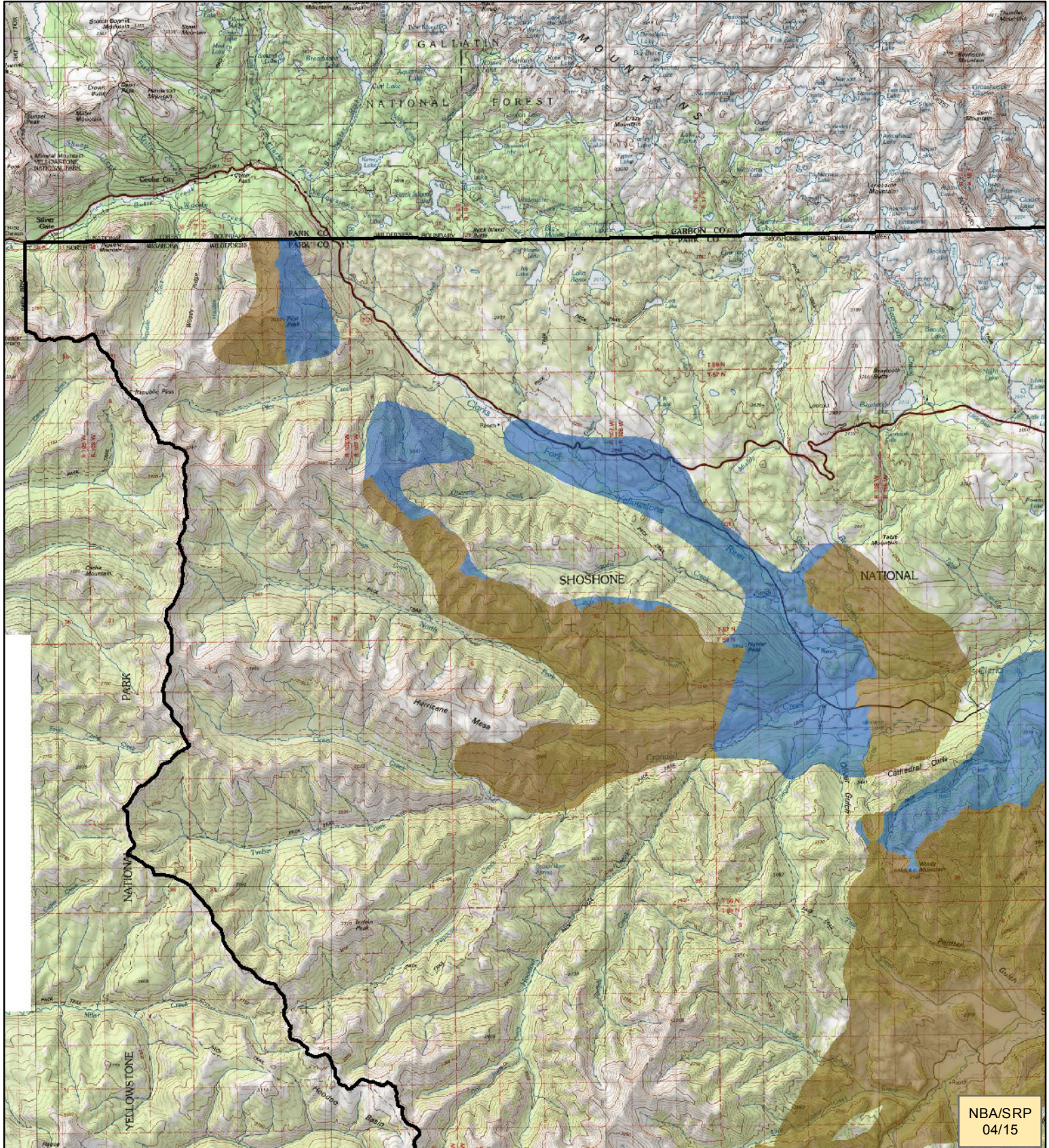
-  snowmobile use allowed
-  closed to snowmobile use
-  ForestBoundary

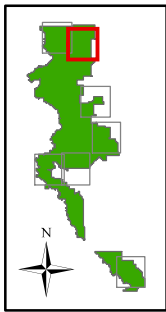
See Map K for
display of areas
open to winter
motorized use

Map C (Page 1 of 7) Clarksfork west Winter Range Exemption Areas

The USDA Forest Service makes no warranty, expressed or implied, as to the accuracy, reliability, or completeness of the geospatial data displayed on this map. The original data, compiled to meet project objectives, was current at the time of analysis and may come from various sources.




0 0.5 1 2 3 Miles






Legend


Big Game Crucial Winter Range

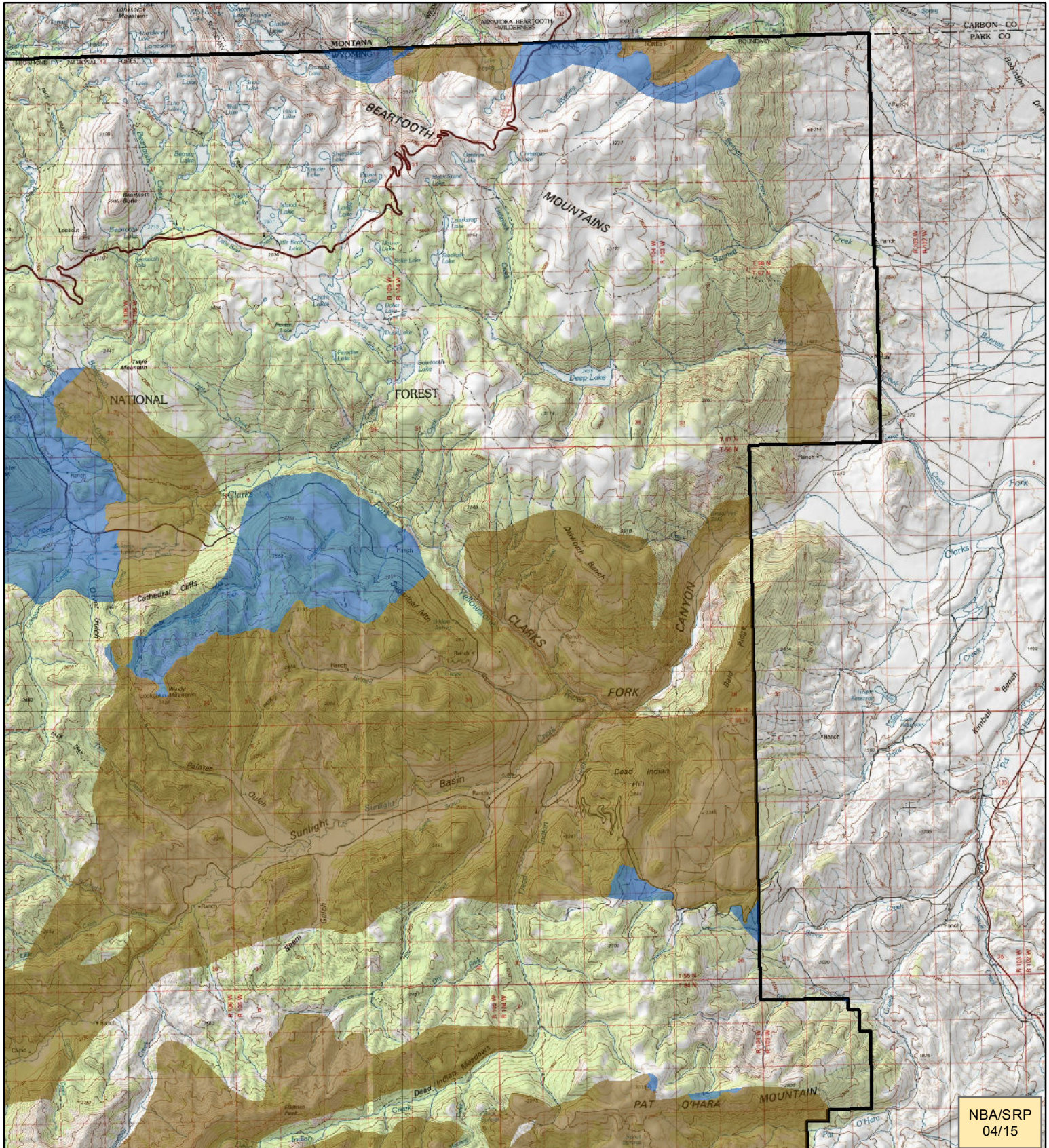
-  snowmobile use allowed
-  closed to snowmobile use
-  ForestBoundary

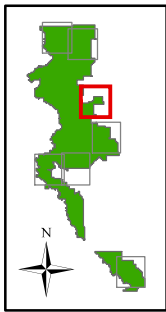
See Map K for
display of areas
open to winter
motorized use

Map C (Page 2 of 7) Clarksfork east Winter Range Exemption Areas

The USDA Forest Service makes no warranty, expressed or implied, as to the accuracy, reliability, or completeness of the geospatial data displayed on this map. The original data, compiled to meet project objectives, was current at the time of analysis and may come from various sources.




0 0.5 1 2 3 Miles






Legend


Big Game Crucial Winter Range

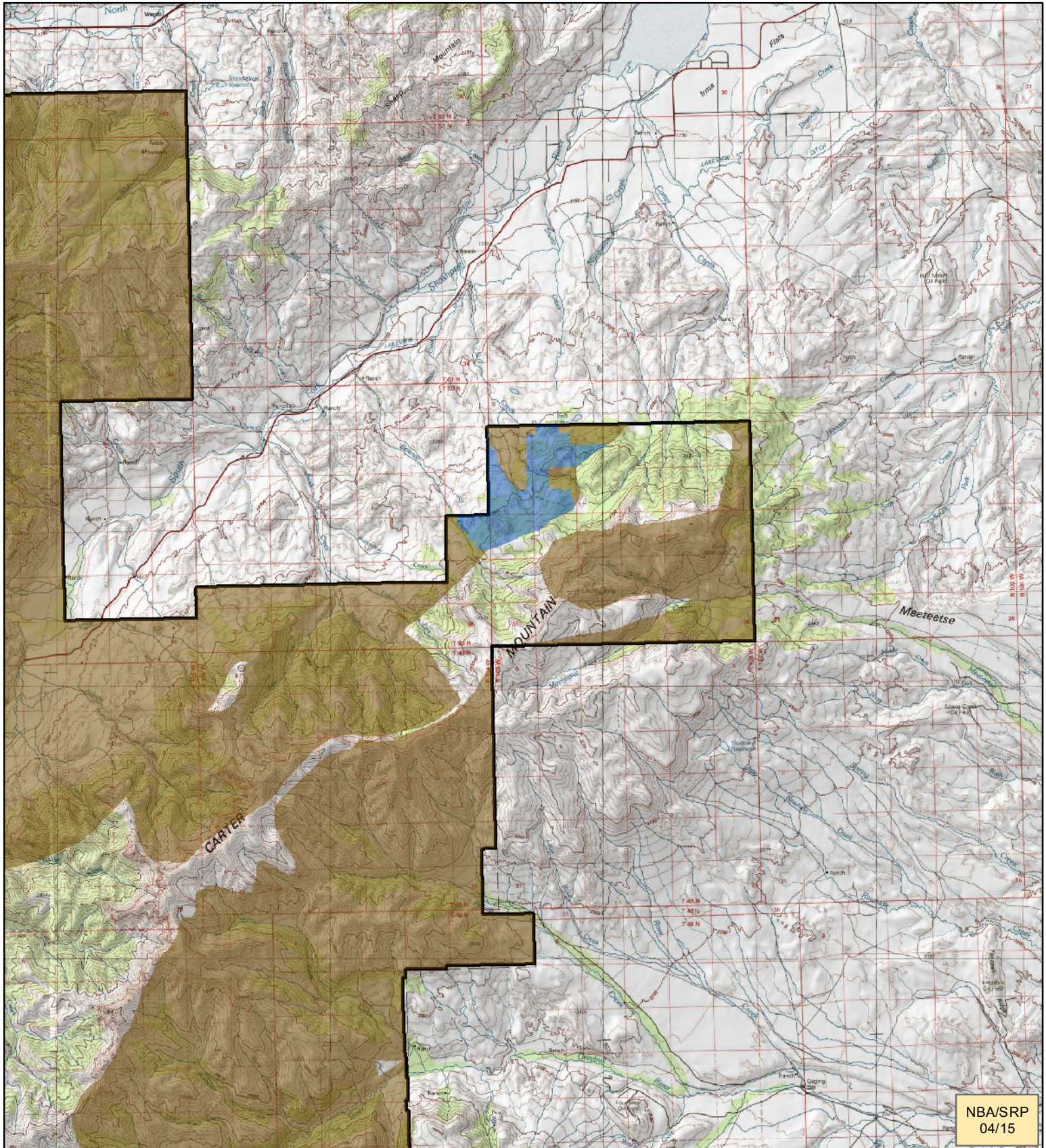
-  snowmobile use allowed
-  closed to snowmobile use
-  ForestBoundary

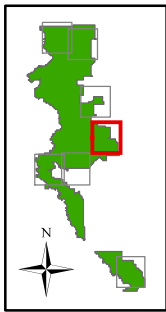
See Map K for
display of areas
open to winter
motorized use

Map C (Page 3 of 7) Carter Mt. Winter Range Exemption Areas

The USDA Forest Service makes no warranty, expressed or implied, as to the accuracy, reliability, or completeness of the geospatial data displayed on this map. The original data, compiled to meet project objectives, was current at the time of analysis and may come from various sources.




0 0.5 1 2 3 Miles






Legend


Big Game Crucial Winter Range

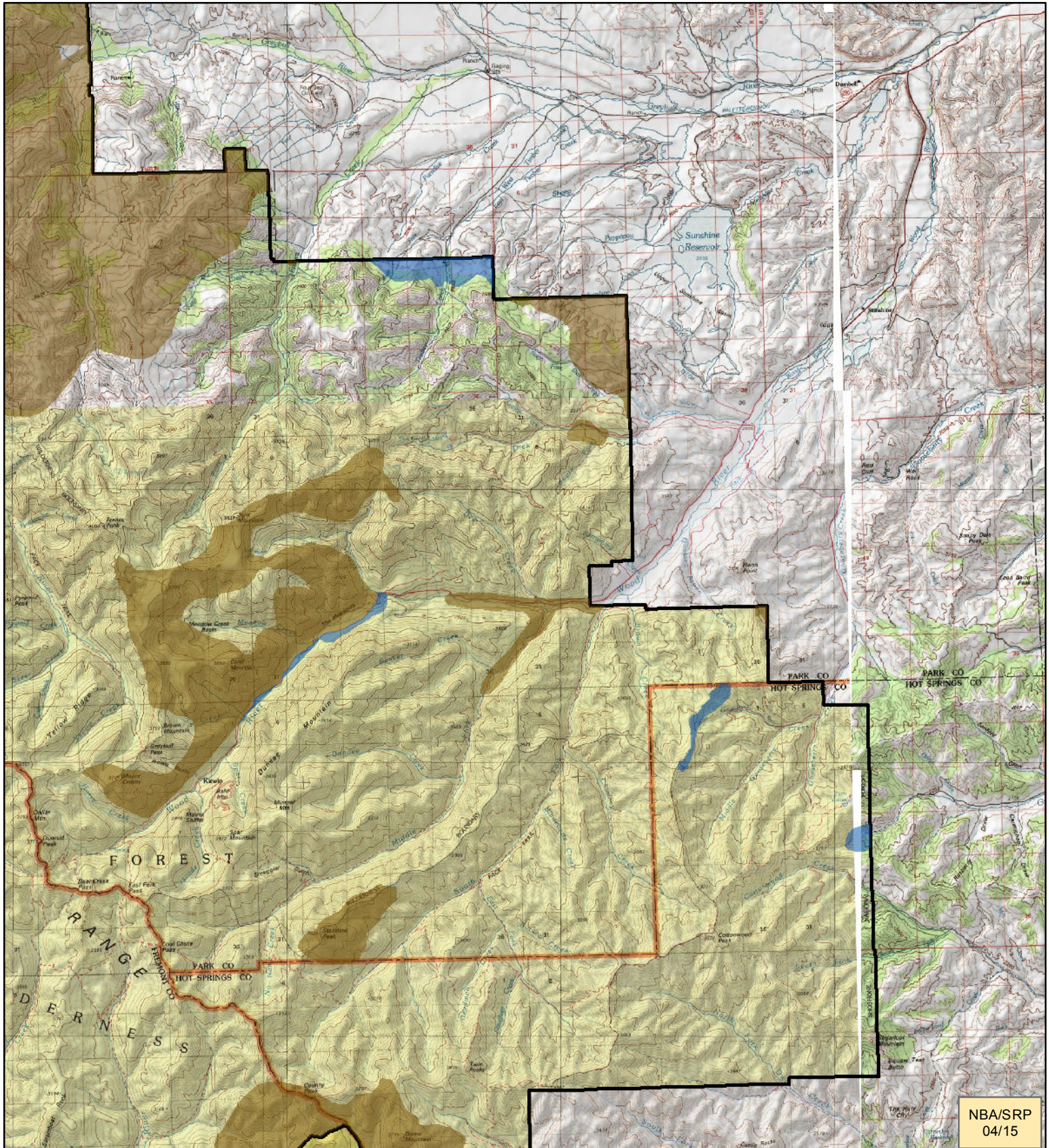
-  snowmobile use allowed
-  closed to snowmobile use
-  ForestBoundary

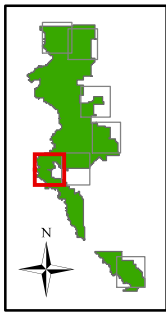
See Map K for
display of areas
open to winter
motorized use

Map C (Page 4 of 7) Greybull Winter Range Exemption Areas

The USDA Forest Service makes no warranty, expressed or implied, as to the accuracy, reliability, or completeness of the geospatial data displayed on this map. The original data, compiled to meet project objectives, was current at the time of analysis and may come from various sources.




0 0.5 1 2 3 Miles






Legend


Big Game Crucial Winter Range

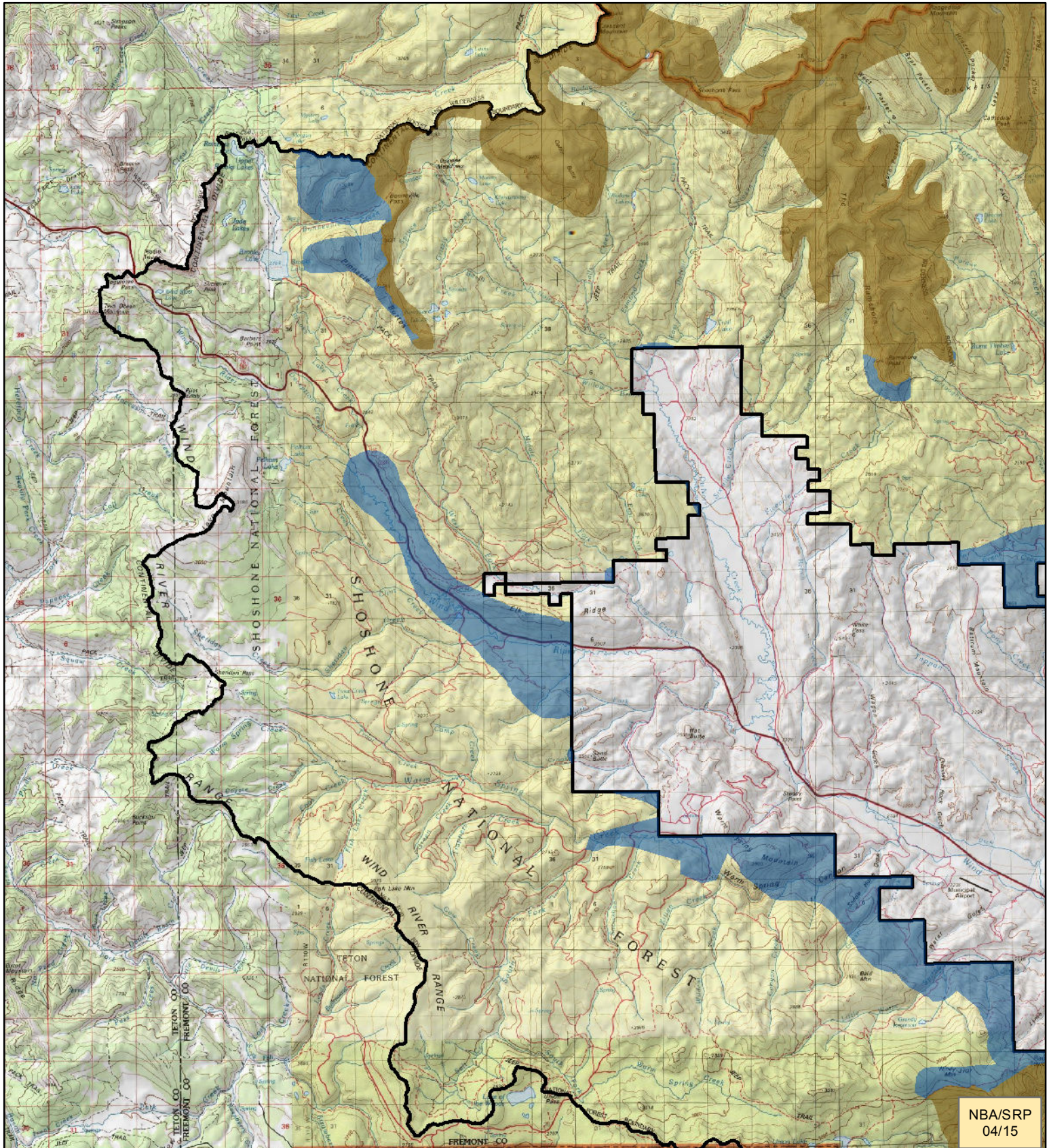
-  snowmobile use allowed
-  closed to snowmobile use
-  ForestBoundary

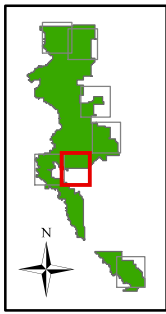
See Map K for
display of areas
open to winter
motorized use

Map C (Page 5 of 7) Wind River west Winter Range Exemption Areas

The USDA Forest Service makes no warranty, expressed or implied, as to the accuracy, reliability, or completeness of the geospatial data displayed on this map. The original data, compiled to meet project objectives, was current at the time of analysis and may come from various sources.




0 0.5 1 2 3 Miles






Legend

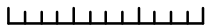
Big Game Crucial Winter Range

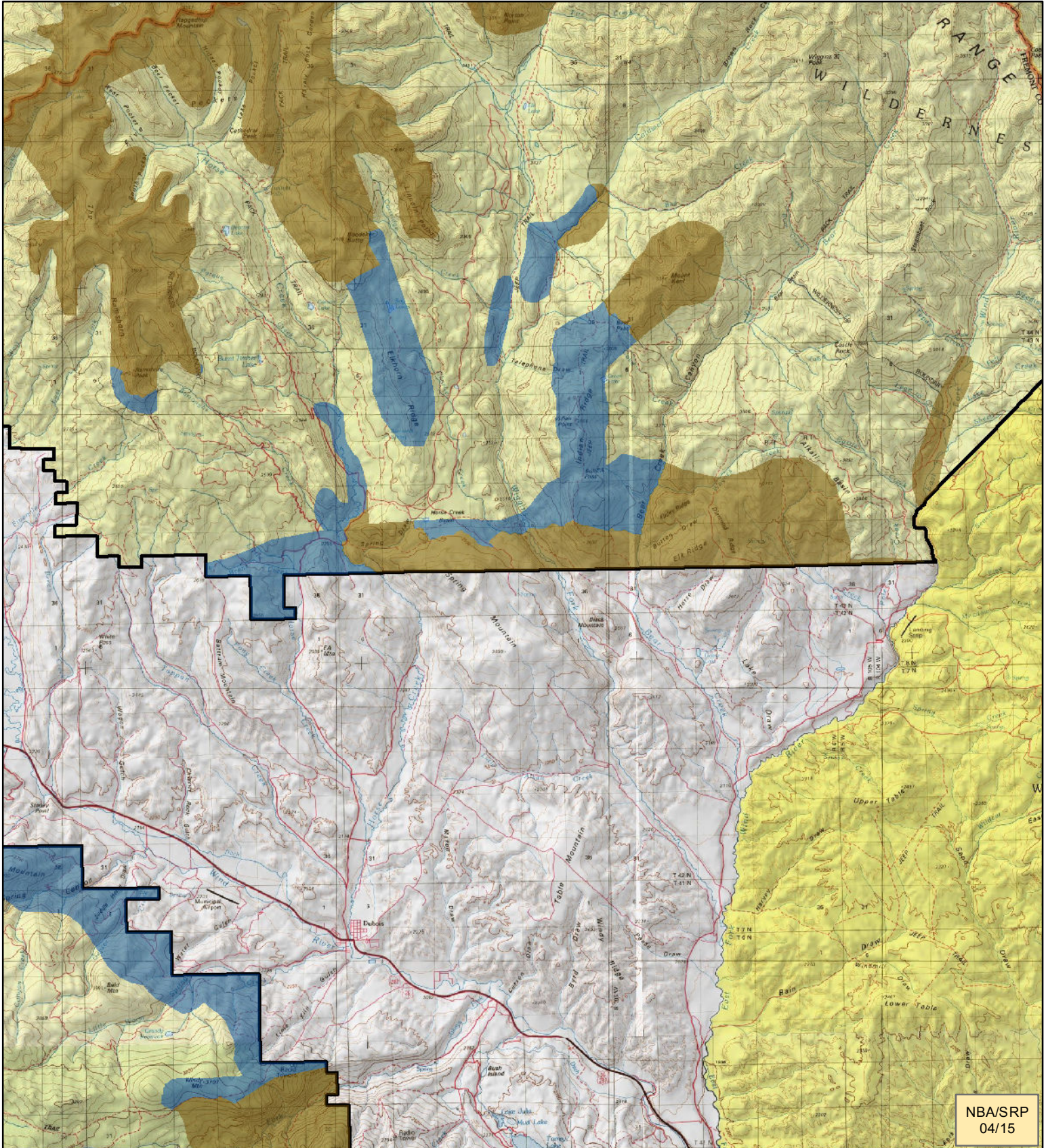
-  snowmobile use allowed
-  closed to snowmobile use
-  ForestBoundary

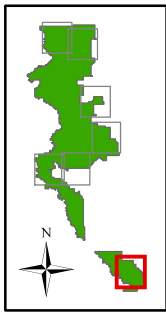
See Map K for
display of areas
open to winter
motorized use

Map C (Page 6 of 7) Wind River east Winter Range Exemption Areas

The USDA Forest Service makes no warranty, expressed or implied, as to the accuracy, reliability, or completeness of the geospatial data displayed on this map. The original data, compiled to meet project objectives, was current at the time of analysis and may come from various sources.




0 0.5 1 2 3 Miles






Legend

Big Game Crucial Winter Range

-  snowmobile use allowed
-  closed to snowmobile use
-  ForestBoundary

See Map K for
display of areas
open to winter
motorized use

Map C (Page 7 of 7) Washakie Winter Range Exemption Areas

The USDA Forest Service makes no warranty, expressed or implied, as to the accuracy, reliability, or completeness of the geospatial data displayed on this map. The original data, compiled to meet project objectives, was current at the time of analysis and may come from various sources.

0 0.5 1 2 3 Miles
