



# Lamborn Trail #894 & Mt. Lamborn Trail #895

GUNNISON NATIONAL FOREST  
PAONIA RANGER DISTRICT  
403 N. RIO GRANDE AVE.  
PAONIA, CO 81428  
970-527-4131

The trail starts just south of Bell Creek Springs. The Lamborn Trail climbs up between Mt. Lamborn and Landsend. After passing between the two mountains, the Mt. Lamborn Trail will intersect the Lamborn Trail about 2.4 miles from the Trailhead. The Mt. Lamborn Trail then begins a steep climb towards Mt. Lamborn's summit. After several switchbacks, the trail ends on a spruce and fir covered bench. Officially the trail ends before the summit, however; a foot trail will lead to the peak. If you continue on the Lamborn Trail for another 1.4 miles, you will intersect the Inter-Ocean Trail #890.



## DIRECTIONS

### PAONIA to McCluskey Parking Lot

HEADING SOUTH ON GRAND AVE.

1. Turn **Right** on **1st St** 0.1 mi
2. Slight **Left** onto **Mathews Ln** 1.8 mi
3. Turn **Left** onto **Crawford Rd** 0.7 mi
4. Turn **Left** onto **Stewart Mesa Rd** 1.0 mi
5. Turn **Right** onto **4050 Rd** 1.3 mi
6. Turn **Left** onto **L50 Rd** 0.2 mi

**P** **PARKING** : Recommended for 2-Wheel Drive and Horse Trailers

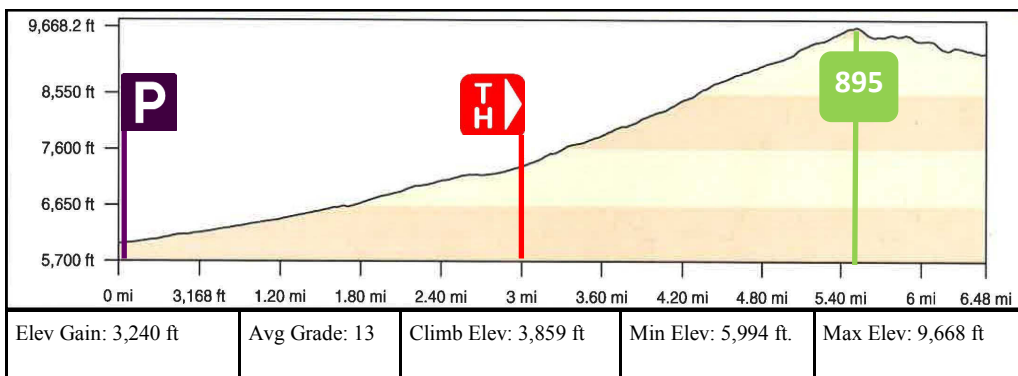
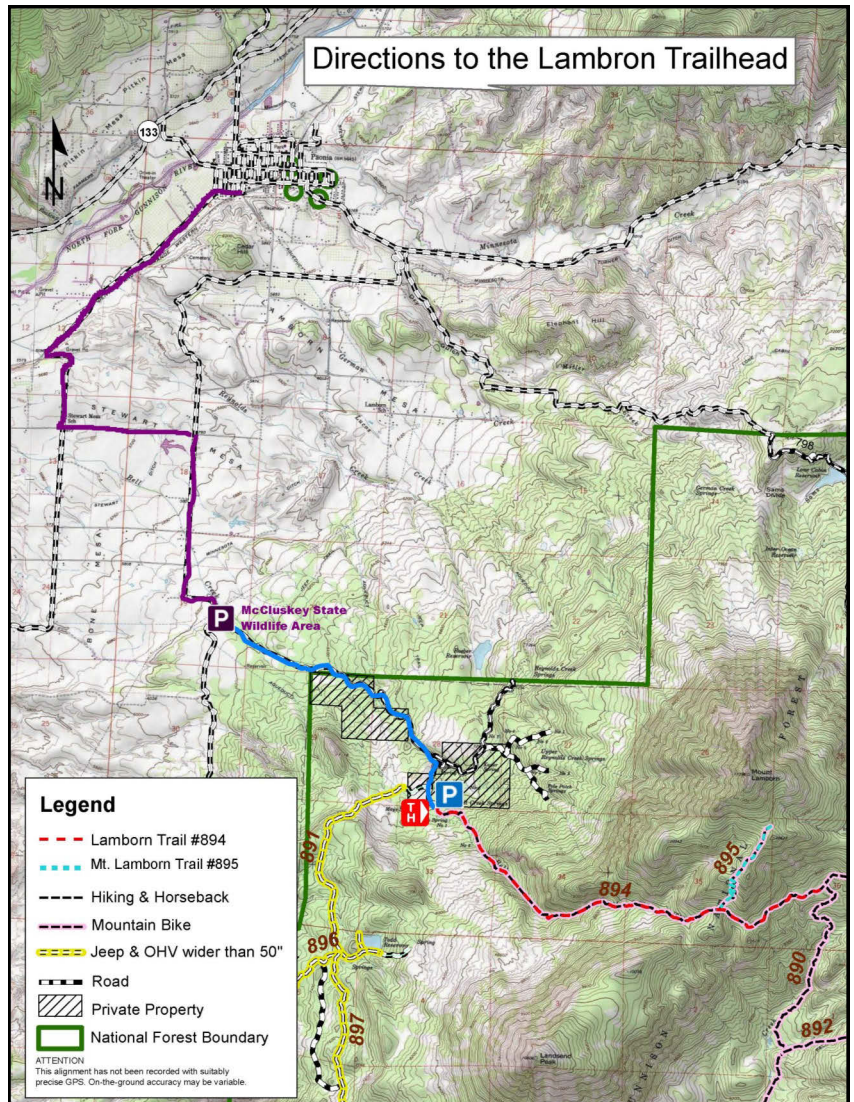
### McCluskey Parking Lot to Trailhead

STAY ON MAIN TRAIL | FOLLOW SIGNAGE

1. Turn **Left** at fork 1.0 mi
2. Turn **Right** at fork 2.5 mi
3. Turn **Left** at fork 0.5 mi

**P** **PARKING** : High Clearance 4-Wheel Drive Vehicles, and ATV/ OHV

**Mt. Lamborn Elevation:** 11,344 feet  
**Landsend Elevation:** 10,774 feet



## QUICK FACTS

### Lamborn Trail #894

**Distance:** 6.4 miles from McCluskey  
2.4 miles from TH

### Mt. Lamborn Trail #895

**Distance:** 0.9 miles

**Usage:** Light  
**USGS Map:** Paonia