



File Code: 2670
Route To: File

Date: September 15, 2015

Subject: Forest Order No. 15-15-13 – Rough Fire Closure

From: Dean Gould, Forest Supervisor 

This document explains my rationale and the regulatory basis for implementing a closure order for the Rough Fire on the Sierra National Forest.

On the afternoon of July 31, 2015 a lightning fire began in the Rough Creek drainage, near the Middle Fork of the Kings River, on the High Sierra Ranger District. By August 17, 2015, the Rough Fire had grown from its original size to over 20,000 acres and grew to an additional 51,000 acres by August 25, 2015. As of September 14, 2015 the Rough fires total acreage is over 138,000 acres

The purpose of this closure is to provide safety for the public and for the firefighters who are engaged in fire suppression efforts. This restriction is necessary for the purposes of ensuring public safety until the wildfire can be managed to protect the public. Closure of the fire area is necessary to help ensure that no one is injured within or near the fire perimeter. All National Forest System roads, within the burned area will be closed due to fire suppression activities that create a hazard to the public which includes the falling of hazard trees that were weakened by the fire and fuel breaks being constructed and maintained along those roads. This closure will remain in effect until the fire is fully suppressed.

I have concluded that this decision may be categorically excluded from documentation in an Environmental Impact Statement (EIS) or Environmental Assessment (EA) under the National Environmental Policy Act. This action falls within the category identified in 36 CFR 220.6(d)(1) – prohibitions to provide short-term resource protection or to protect public health and safety – and does not require documentation in a decision memo, decision notice, or record of decision. I have determined that there are no extraordinary circumstances associated with this temporary closure. Implementation of the decision may begin immediately.



SIERRA NATIONAL FOREST
Forest Order No. 15-15-13
Rough Fire Closure

Pursuant to 16 USC 551 and 36 CFR 261.50(a) and (b), and to provide for public safety, the following acts are prohibited within the Sierra National Forest. This Order is effective from September 16, 2015, until the Rough Fire is declared out.

1. **Going into or being upon National Forest System lands within the Rough Fire Closure Area. The boundary of the Rough Fire Closure Area begins at the intersection of Forest Road No. 10S24 and Forest Road No. 11S40, then continues east along the southern edge of Forest Road No. 11S40 to its intersection with the west end of Wishon Dam, then continues east along the northern edge of Forest Road No. 11S40 to its intersection with the east end of Wishon Dam, then continues due east to Castle Peak, then continues due southeast to Kettle dome, then continues southwest along the Sierra National Forest and Kings Canyon National Park boundary to its intersection with Obelisk, then continues southeast along the Sierra National Forest and Kings Canyon National Park boundary to its intersection with the Sequoia National Forest boundary, then continues southwest along the Sequoia National Forest boundary and Sierra National Forest boundary to its intersection with the Middle Fork of the Kings River, then continues downstream on the northern edge of the Middle Fork of the Kings River to its intersection with the high water mark of Pine Flat Reservoir, then continues west and north along the high water mark to its intersection with the western edge of Big Creek, then continues north along the western edge of Big Creek to its intersection with the southern edge of Trimmer Springs Road, then continues west along the southern edge of Trimmer Springs Road to its intersection with the eastern edge of Forest Road No. 10S69, then continues north along the eastern edge of Forest Road No. 10S02, then continues north along the eastern edge of Forest Road No. 10S02 to its intersection with the eastern edge of Forest Road No. 10S17, then continues north along the eastern edge of Forest Road No. 10S17 to its intersection with the southern edge of Dinkey Creek Road, then continues east along the southern edge of Dinkey Creek Road to its intersection with Forest Road No.10S24, then continues east along the northern section line of Section 20, T10S, R26E, MDBM, to its intersection with the eastern edge of Dinkey Creek, then continues southeast along the eastern edge of Dinkey Creek to its intersection with northern edge of Deer Creek, then continues east along the northern edge of Deer Creek to its intersection with the southern edge of Forest Road No. 11S40, then continues east along the southern edge of Forest Road No. 11S40 back to the starting point, as shown on the attached map. 36 CFR 261.53(e).**
2. **Being on any National Forest System road within the Rough Fire Closure Area, as shown on the attached map. 36 CFR 261.54(e).**

3. Being on any National Forest System trail within the Rough Fire Closure Area, as shown on the attached map. 36 CFR 261.55(a).

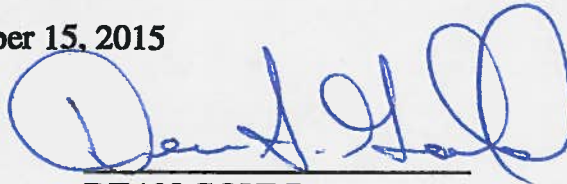
Pursuant to 36 CFR 261.50(e), the following persons are exempt from this Order:

1. Persons with a permit from the Forest Service specifically authorizing the otherwise prohibited actor omission.
2. Any Federal, State, or local officer or member of an organized rescue or fire fighting force in the performance of an official duty.

These prohibitions are in addition to the general prohibitions contained in 36 CFR Part 261, Subpart A.

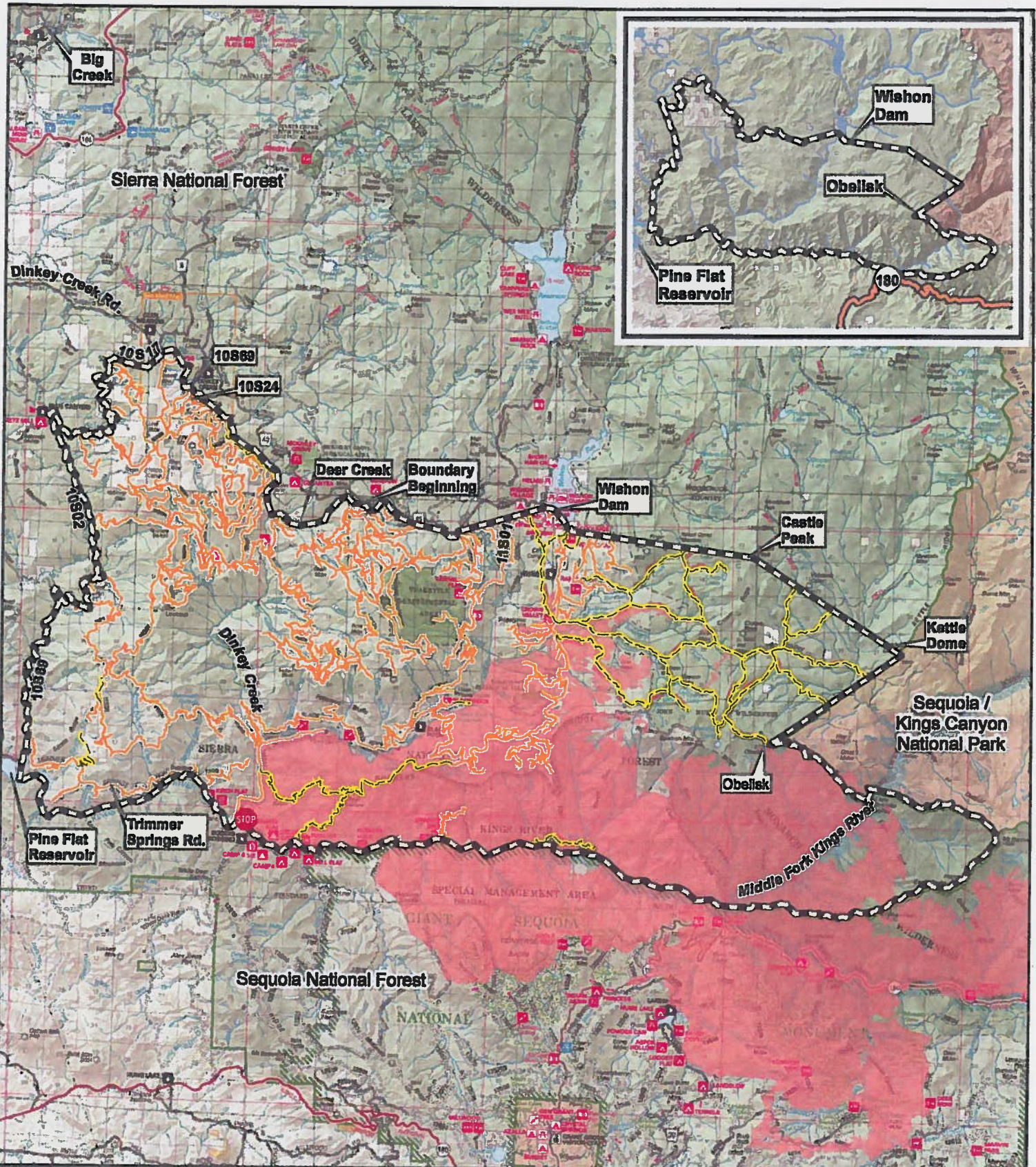
A violation of these prohibitions is punishable by a fine of not more than \$5,000 for an individual or \$10,000 for an organization, or imprisonment for not more than six months, or both. 16 USC 551 and 18 USC 3559, 3571, and 3581.

Executed in Clovis, California on September 15, 2015

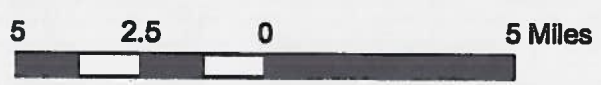


DEAN GOULD
Forest Supervisor

This Order supersedes Order No. 15-15-12, dated August 26, 2015.



SIERRA NATIONAL FOREST
Forest Order 15-15-13
Rough Fire Closure



-  Closed Trails
-  Closed Roads
-  Fire Closure Area
-  Rough Fire Perimeter