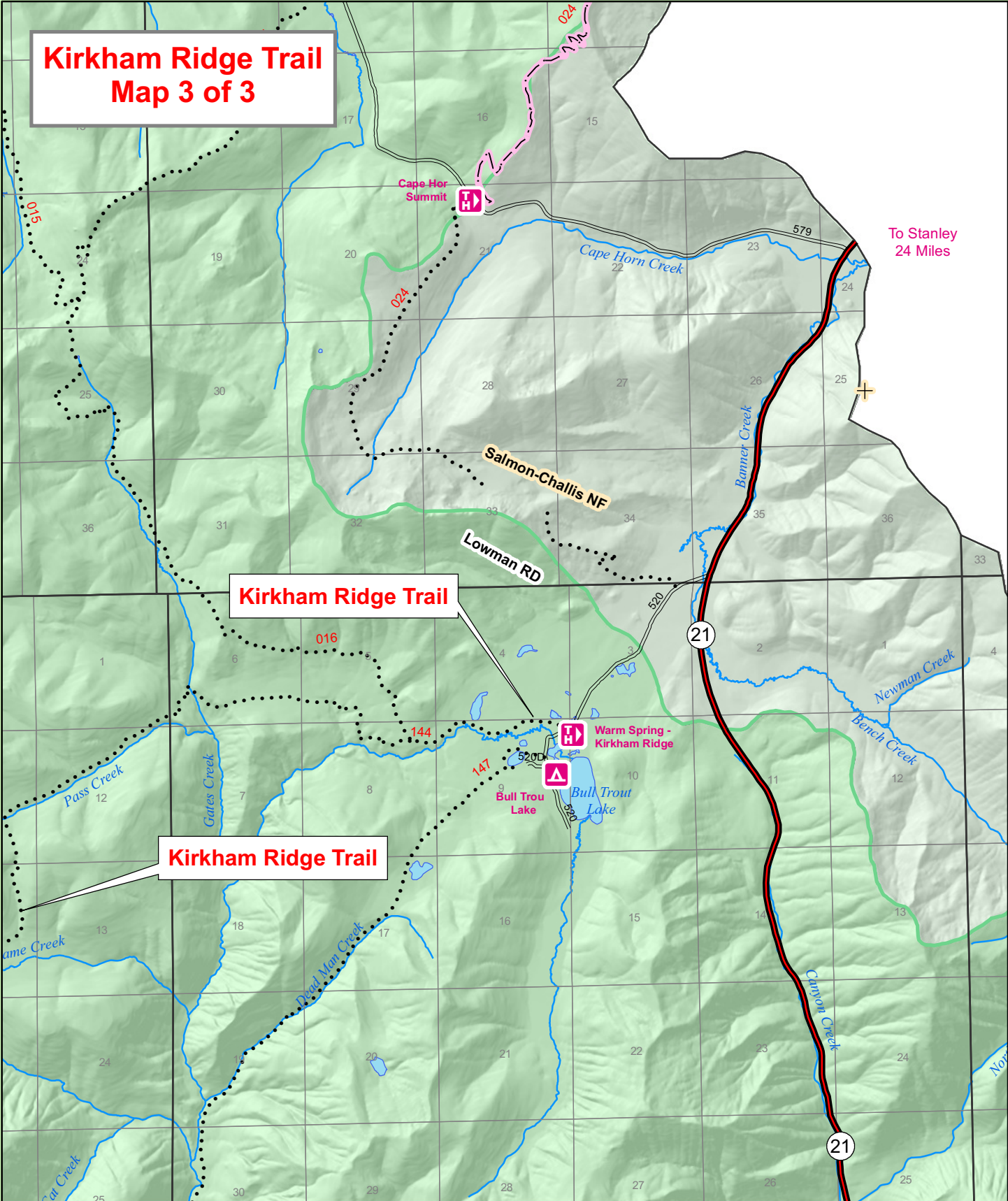


Kirkham Ridge Trail Map 3 of 3



To Stanley
24 Miles

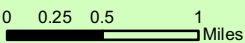
Kirkham Ridge Trail

Kirkham Ridge Trail

Boise National Forest Trail System

Lowman Ranger District

Kirkham Ridge Trail #144



All motorized trails are open to non-motorized travel.

Trails

- Hikers
- Hikers and Stock Use
- Bicycles, Stock Use and Hikers
- ATVs < 50" in width
- Motorcycle
- Trails - Seasonal

Roads

- Highway
- Passenger Car Road
- Not Suitable for Passenger Cars
- Open to ATV & Motorcycle
- Local Non-Forest Roads
- Road closed to Motorized Use
- Roads - Seasonal

Land Ownership

- USFS
- PRIVATE
- STATE - FG
- District Boundary