

## General Project Information

The U.S. 33 Nelsonville Bypass is the last of four segments required to connect I-77 (Ravenswood, WV) to I-70 (Columbus, OH).

The goals of the Nelsonville Bypass project are to:

- Provide a highway system linkage by completing the U.S. 33 corridor;
- Improve the level of service for local and through traffic;
- Improve facility deficiencies;
- Separate through traffic from local traffic;
- Improve highway safety conditions;
- Enhance regional economic development opportunity.

The proposed four-lane highway will be approximately 8.5 miles long when completed, of which an estimated 4.5 miles will run through the Wayne National Forest.

Highway corridor layout and clearing began spring 2006. Phase 1 of the bypass construction began July 2007. The western half of the bypass is expected to be completed fall 2012 and the eastern half is expected to be completed by fall 2013.

### How will bypass construction affect trail use?

The bypass project will temporarily impact the southern portion of the Dorr Run Loop ATV (all-terrain vehicle) trail system near Company Road for approximately five years beginning as early as April 2007.



*US Highway 33 near Haydenville, OH*

### Will the entire trail system be closed during bypass construction?

No. Only the segment of the Dorr Run Loop Trail south of Company Road is closed until that part of the highway is completed and the trail segment is reconnected. All other ATV trails will remain open during the traditional trail season (April 15<sup>th</sup> – Dec. 15<sup>th</sup>).

Trail closure will begin at trailhead #1 (Sycamore), however, the trailhead itself will remain open for parking. The closed trail segment is approximately 2 miles of trail south of Company Road and ends at the intersection of the 1985 Loop Trail near trailhead No. 3 (Scarlet Oak). *See map on reverse side.*

The 1985 Loop Trail will be used as an access road to the construction project, as well as an ATV trail. Riders using this trail should use extra caution and anticipate vehicular traffic coming from either direction.

Please check the Wayne's website [www.fs.fed.us/r9/wayne](http://www.fs.fed.us/r9/wayne) for current

information on road and trail closures associated with bypass construction.

### Directions to trailhead during bypass construction:

(From North/West) Take County Road 25 exit towards Haydenville. Proceed through Haydenville approximately 1.5 miles, then turn left onto old U.S. 33. Approximately 300 feet, turn right onto Twp. Rd. 336 (Company Rd.). Access from the South/East is unchanged.

### Will Company Road be closed during bypass construction?

Yes, but only for 5 to 15 minute intervals during actual construction of the overpass bridge. This is presently expected to be in 2012. Traffic will be flagged during this period.

Vehicle access to Company Road will not be obstructed on Saturdays, Sundays, or holidays. During weekdays, vehicle traffic may be intermittently delayed during actual construction.

### Results of bypass completion

When completed, the affected trail will be reconnected to the main trail system through the use of two highway underpasses.

The trail will cross beneath the new highway on the east end (toward Nelsonville) through a 14-foot wide by 10-foot tall concrete box culvert. On the west end (toward Haydenville), the trail will be adjacent to Company Road and cross under twin highway bridges accessing Trailhead #1. A wooden

barrier will separate the trail from Company Road.

### When will the trail reopen for use?

Based upon the expected construction time for Phase 2, the Dorr Run Loop is expected to be completed in late 2012. However, the trail may not reopen for use until April 15, 2013.

### Will new trails be constructed?

A \$100,000 grant was awarded to WNF from the Ohio Dept. of Transportation (ODOT) to construct an additional 5.1 miles of new ATV trails near Camp Ohio to help mitigate the temporary loss of the 2.1 miles of trails from highway construction. This new trail is expected to open fall 2012.

### For more information, contact:

Wayne National Forest  
13700 U.S. Highway 33  
Nelsonville, OH 45764  
Phone: 740-753-0101

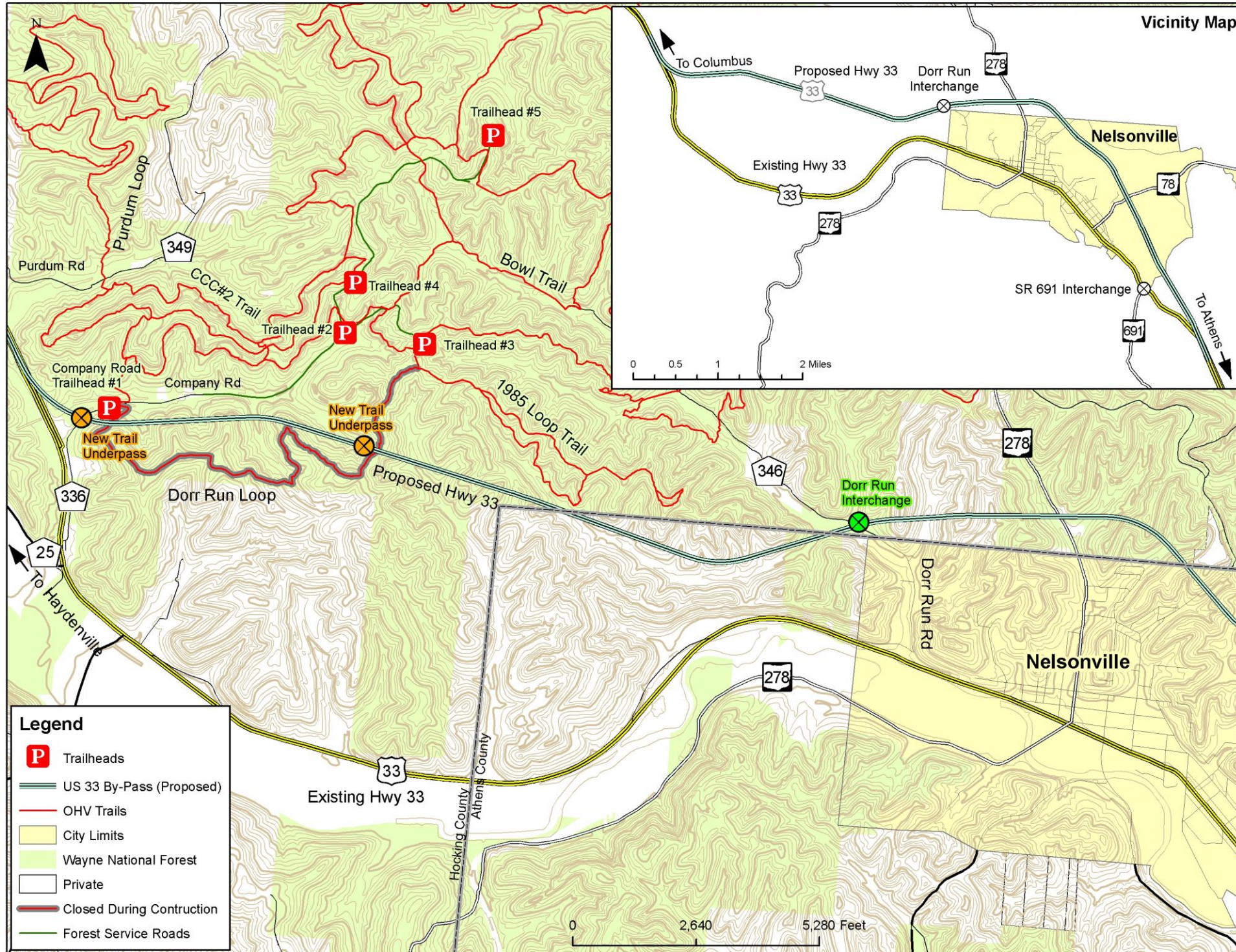
Federal relay system for the deaf and hearing impaired: 1-800-877-8339

Website: [www.fs.fed.us/r9/wayne](http://www.fs.fed.us/r9/wayne)

*USDA is an equal opportunity provider and employer.*



*Box culvert under highway for ATV travel*



# US 33 Bypass - Effects on Trails Wayne National Forest

**America's Great Outdoors**