



# High Uintas Wilderness

Ashley National Forest  
Wasatch-Cache National Forest

**WARNING:** Do not use this map for wilderness travel. It is intended for general information only. Detailed maps are available from the Forest Service and outdoor retailers.

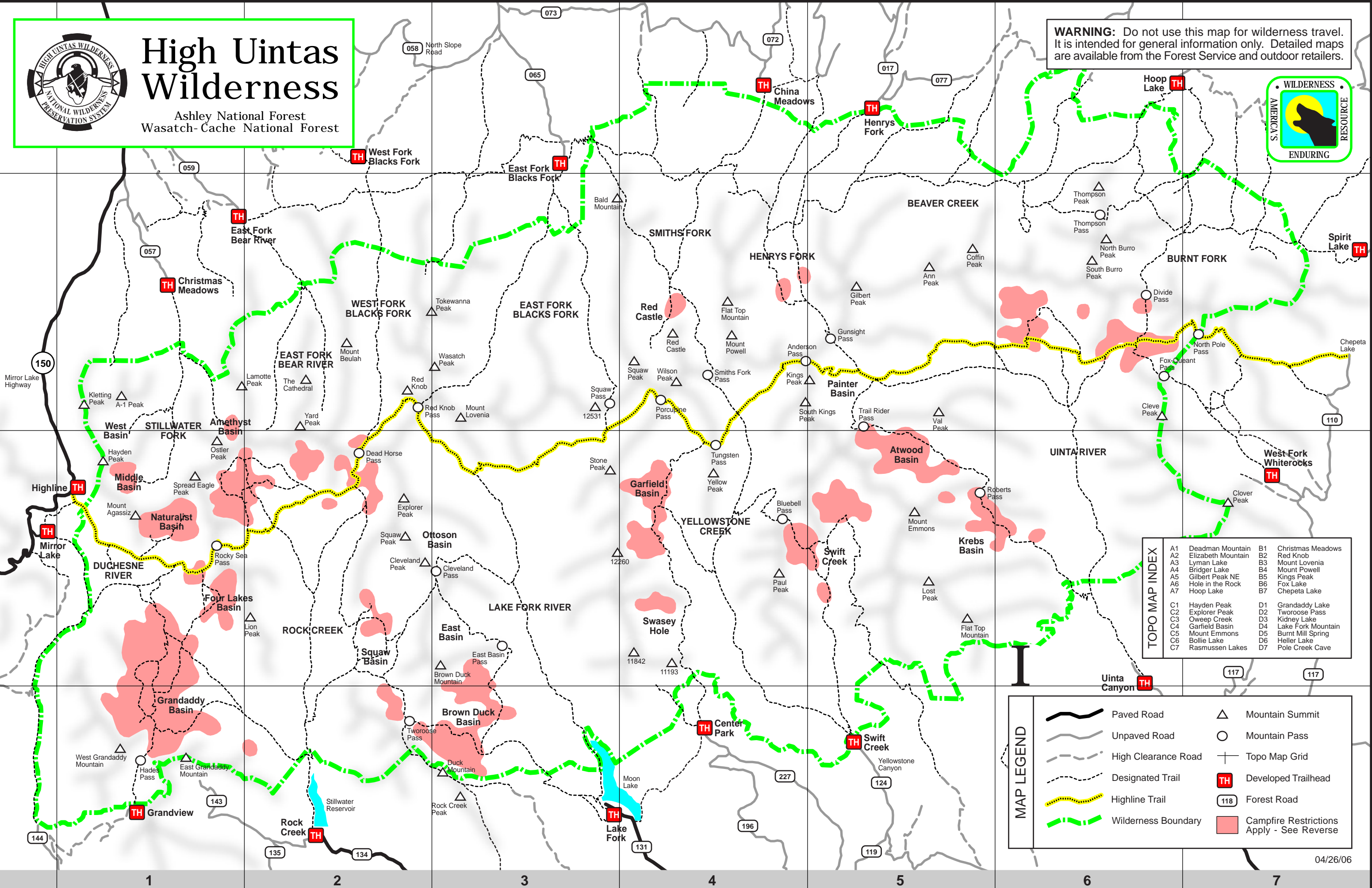


A

B

C

D



TOPO MAP INDEX			
A1	Deadman Mountain	B1	Christmas Meadows
A2	Elizabeth Mountain	B2	Red Knob
A3	Lyman Lake	B3	Mount Lovenia
A4	Bridger Lake	B4	Mount Powell
A5	Gilbert Peak NE	B5	Kings Peak
A6	Hole in the Rock	B6	Fox Lake
A7	Hoop Lake	B7	Chepeta Lake
C1	Hayden Peak	D1	Granddaddy Lake
C2	Explorer Peak	D2	Tworose Pass
C3	Oweep Creek	D3	Kidney Lake
C4	Garfield Basin	D4	Lake Fork Mountain
C5	Mount Emmons	D5	Burnt Mill Spring
C6	Bollie Lake	D6	Heller Lake
C7	Rasmussen Lakes	D7	Pole Creek Cave

MAP LEGEND			
	Paved Road		Mountain Summit
	Unpaved Road		Mountain Pass
	High Clearance Road		Topo Map Grid
	Designated Trail		Developed Trailhead
	Highline Trail		Forest Road
	Wilderness Boundary		Campfire Restrictions Apply - See Reverse