



# Cove Hollow Trail



Shawnee National Forest

Mississippi Bluffs Ranger District

2007

This trail meanders between the bluff line and Cedar Lake. A loop can be made in the center by using Wolf Den Hollow Trail.

## Safety

Carrying a map, compass and plenty of water is recommended. Be aware of hunters during hunting season. Poisonous snakes and poison ivy are present in the area. The trail tread may become slick when wet.

## Surrounding Area

Wolf Den Hollow Trail, Cedar Lake, Cedar Lake Boat Ramp, Pomona Natural Bridge, and the River to River Trail.

## Emergencies

The nearest hospital is Memorial Hospital in Carbondale. The nearest public phone is in Alto Pass.

## For More Information

Mississippi Bluffs Ranger District

521 North Main

Jonesboro, IL 62952

(618) 833-8576

(618) 687-1731

Length : Approximately 4 miles

Travel Time : Approximately 2 hours

Surface Type : Natural

Difficulty Level : Moderate

Recommended Season : Year Round

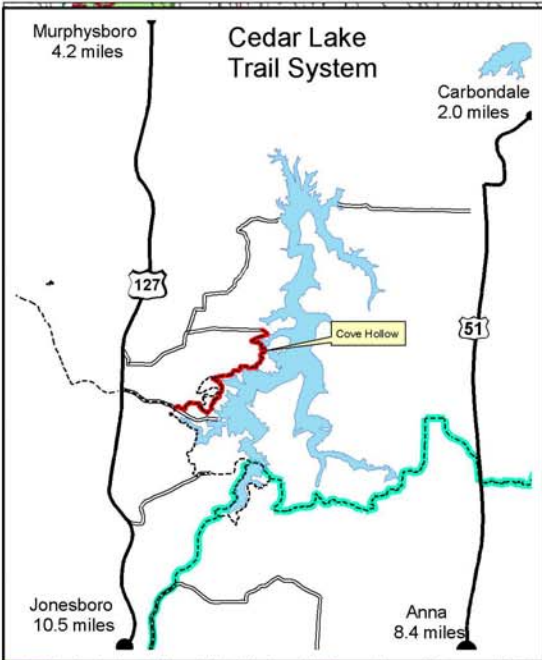
Facilities : Cove Hollow Trailhead has small gravel parking area, Boat Dock Road has a small gravel pull off. Dutch Ridge has a small gravel parking area.

Access : From Rt. 127 turn east on Dutch Ridge Road travel approximately 1.25 miles to Cove Hollow Road, turn south travel approximately 1 mile to trailhead.

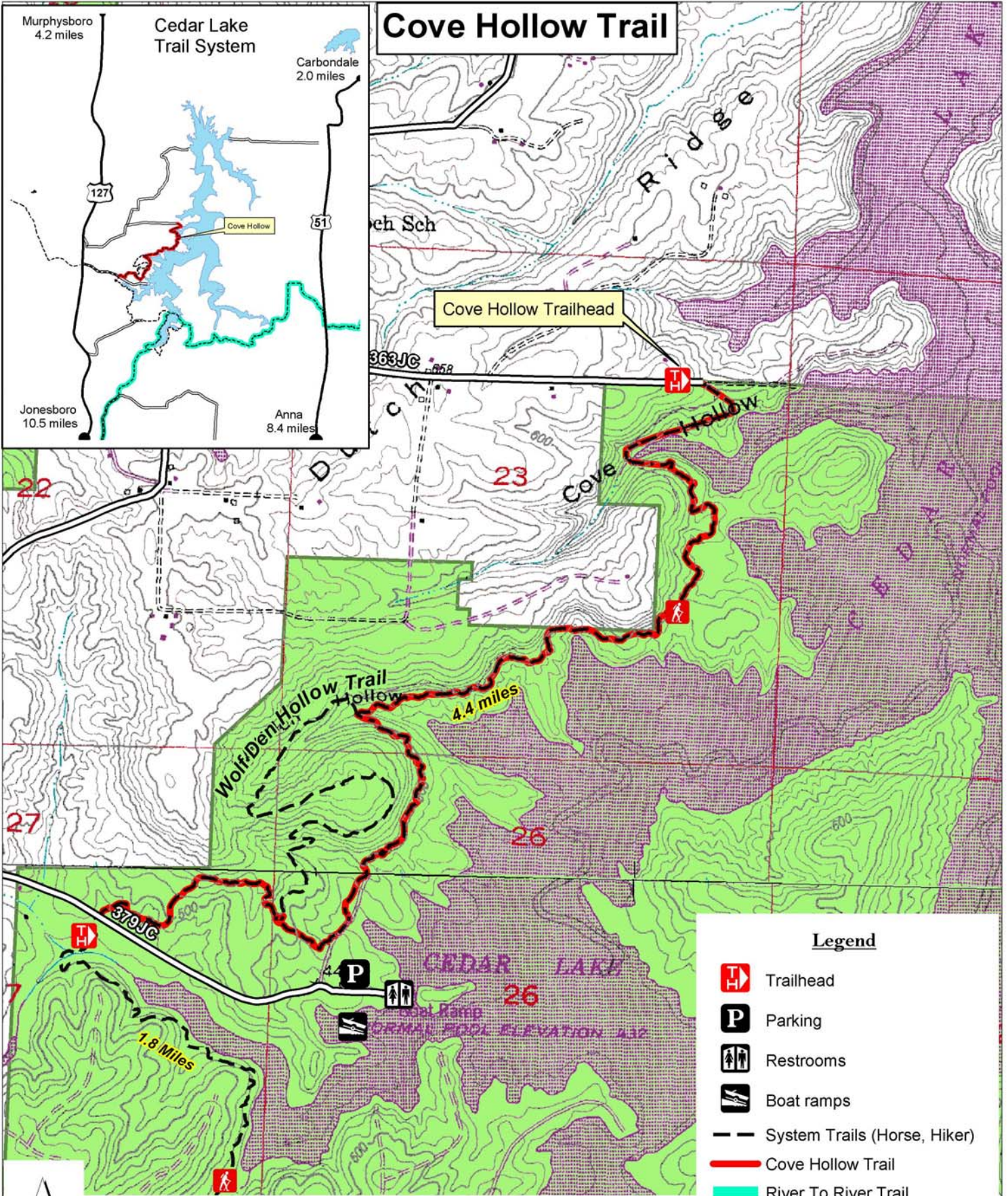
From Rt. 127 turn east on Boat Dock Road travel approximately 1.25 miles to pull off (trail is on the north side of Boat Dock Road).

Hiker/Equestrian Trails -  white diamond

Trail Ethics : Pack it in, Pack it out.



# Cove Hollow Trail



- Legend**
- Trailhead
  - Parking
  - Restrooms
  - Boat ramps
  - System Trails (Horse, Hiker)
  - Cove Hollow Trail
  - River To River Trail
  - Roads
  - National Forest Land

