



# White Pine Trail



The trail meanders through old wildlife openings. During leaf-off Bald Knob Cross comes into view. Developed trailheads are at the north end of Pine Hills Campground and west end of trail at Allen's Flat.

## Safety

Carrying a map, compass and plenty of water is recommended. Be aware of hunters during hunting season. Poisonous snakes and poison ivy are present in the area. The trail tread may become slick when wet.

## Surrounding Area

Pomona Natural Bridge, Cedar Lake, LaRue-Pine Hills/Otter Pond Research Natural Area, Clear Springs Wilderness and Bald Knob Wilderness.

## Emergencies

The nearest hospital is Union County Hospital in Anna. The nearest public phone is in Wolf Lake.

### For More Information:

Mississippi Bluffs Ranger District

521 North Main

Jonesboro, IL 62952

(618) 833-8576 (618) 687-1731

[www.fs.fed.us/r9/forests/shawnee](http://www.fs.fed.us/r9/forests/shawnee)

Length: 2 miles to Hutchins Creek  
2 1/2 miles to Allen's Flat

Travel Time: 2 to 2 1/2 hours


Surface Type: Improved and natural, well marked

Difficulty Level: Moderate to difficult

Recommended Season: Year Round

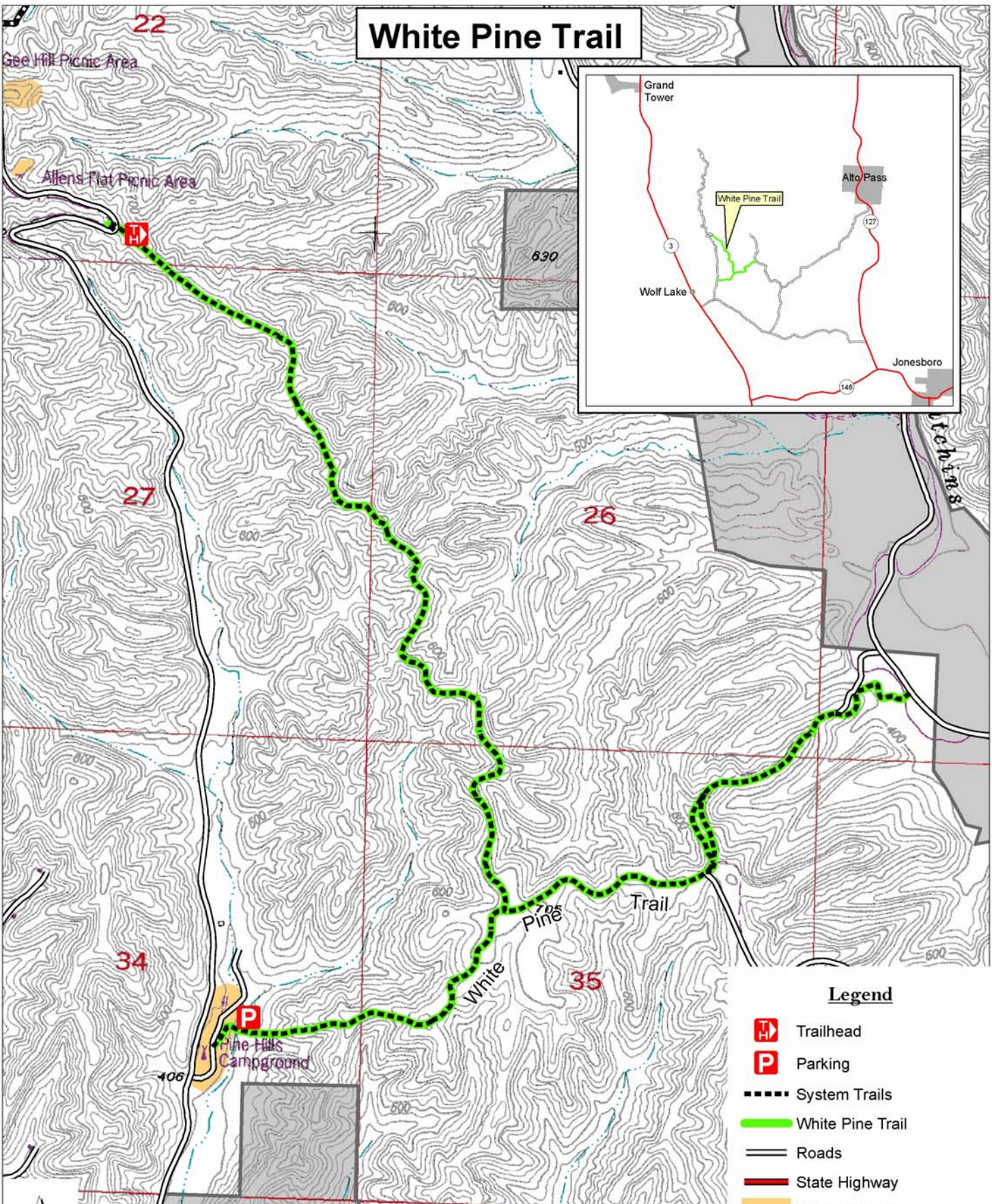
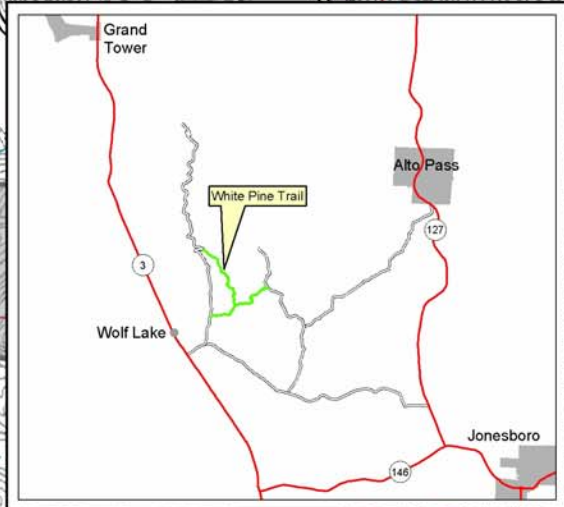
Facilities: Pine Hills Campground has toilets and parking. Vehicles with horse trailers may park at Allen's Flat, 2 miles north of the campground.

Access: From Jonesboro take Rt.146 west to Rt.127 north. Go north 1 mile to the State Forest blacktop road. Turn west and travel 9 miles to FR 236 or Pine Hills Rd. The campground is .07 miles north on Pine Hills Road. To access PHCG from Rt.3, turn onto the State Forest blacktop at the south edge of Wolf Lake. Travel east approx. 1/2 mile to the Pine Hills Rd, FR 236. Turn north onto FR236 and travel .07 miles to the campground.

Hiker/Equestrian Trails -  white diamond Trail

Trail Ethics: Pack it in, Pack it out.

# White Pine Trail



- Legend**
-  Trailhead
  -  Parking
  -  System Trails
  -  White Pine Trail
  -  Roads
  -  State Highway
  -  Recreation Site
  -  National Forest Land
  -  Non National Forest Land

Contour interval = 20 feet

