

Appendix P

Landscape Connectivity Maps



Appendix P

Appendix P



Chequamegon-Nicolet National Forests

Appendix P

Landscape Connectivity Maps

Introduction

This appendix consists of maps displaying landscape connectivity of Northern Hardwoods ecosystems for several of the Alternatives (Alternatives 2, 3, 5 and the Selected Alternative). Each map displays both "core hardwood blocks," which are comprised of Management Areas (MA) 2B, 5B, 5 and 6A polygons, and "hardwood dominated blocks," which are comprised of polygons of the same MAs as the core hardwood blocks but also include MA 2A and MA 8D areas. Only those blocks that are 20 miles long or longer are displayed on these maps. For a discussion of the role of these blocks, see the discussion of **Land Patterns** in *Biological Diversity and Ecosystem Components* (Chapter 3 of the FEIS).

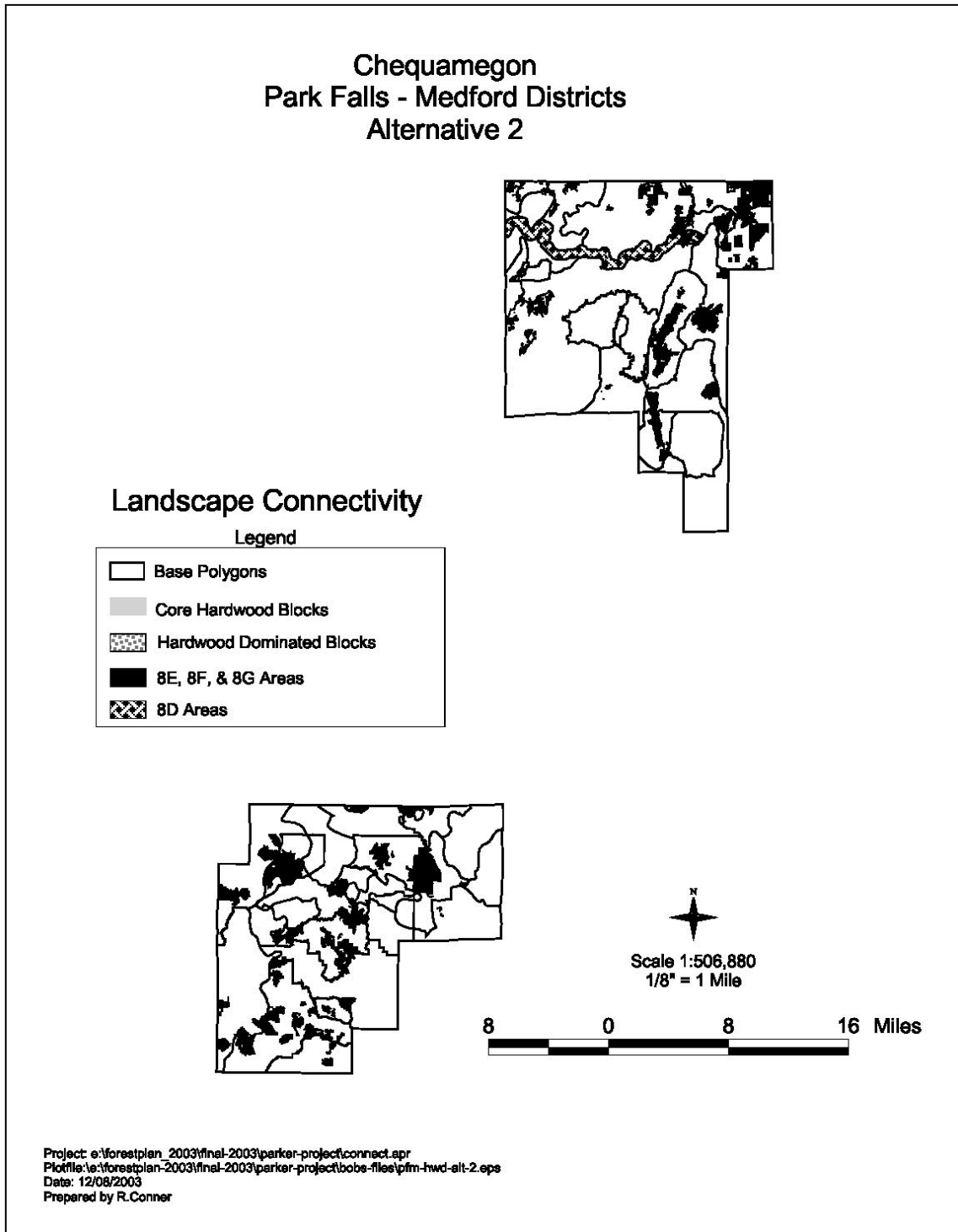


Figure P-1. Park Falls-Medford District Landscape Connectivity Alternative 2

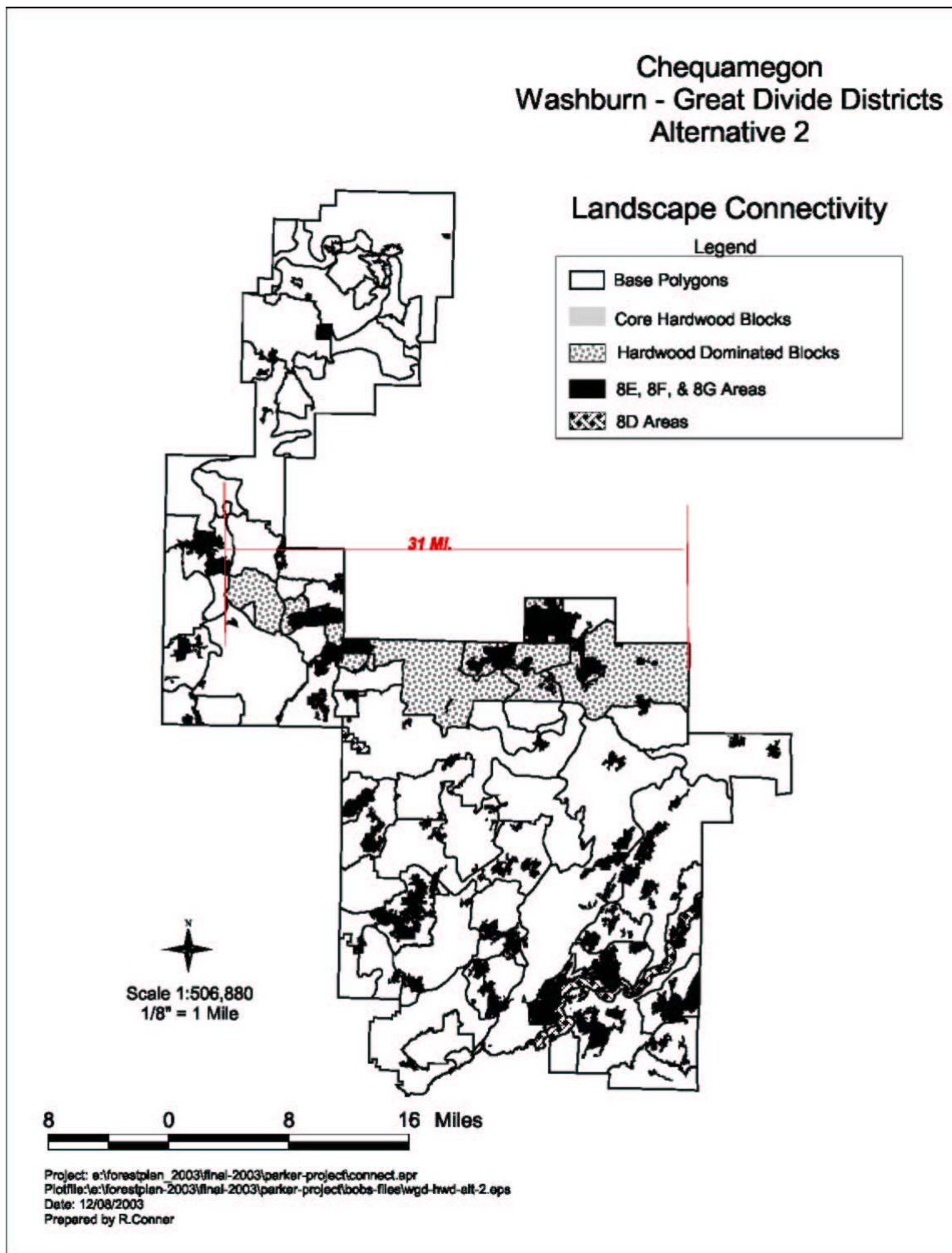


Figure P-2. Washburn-Great Divide Districts Landscape Connectivity Alternative 2

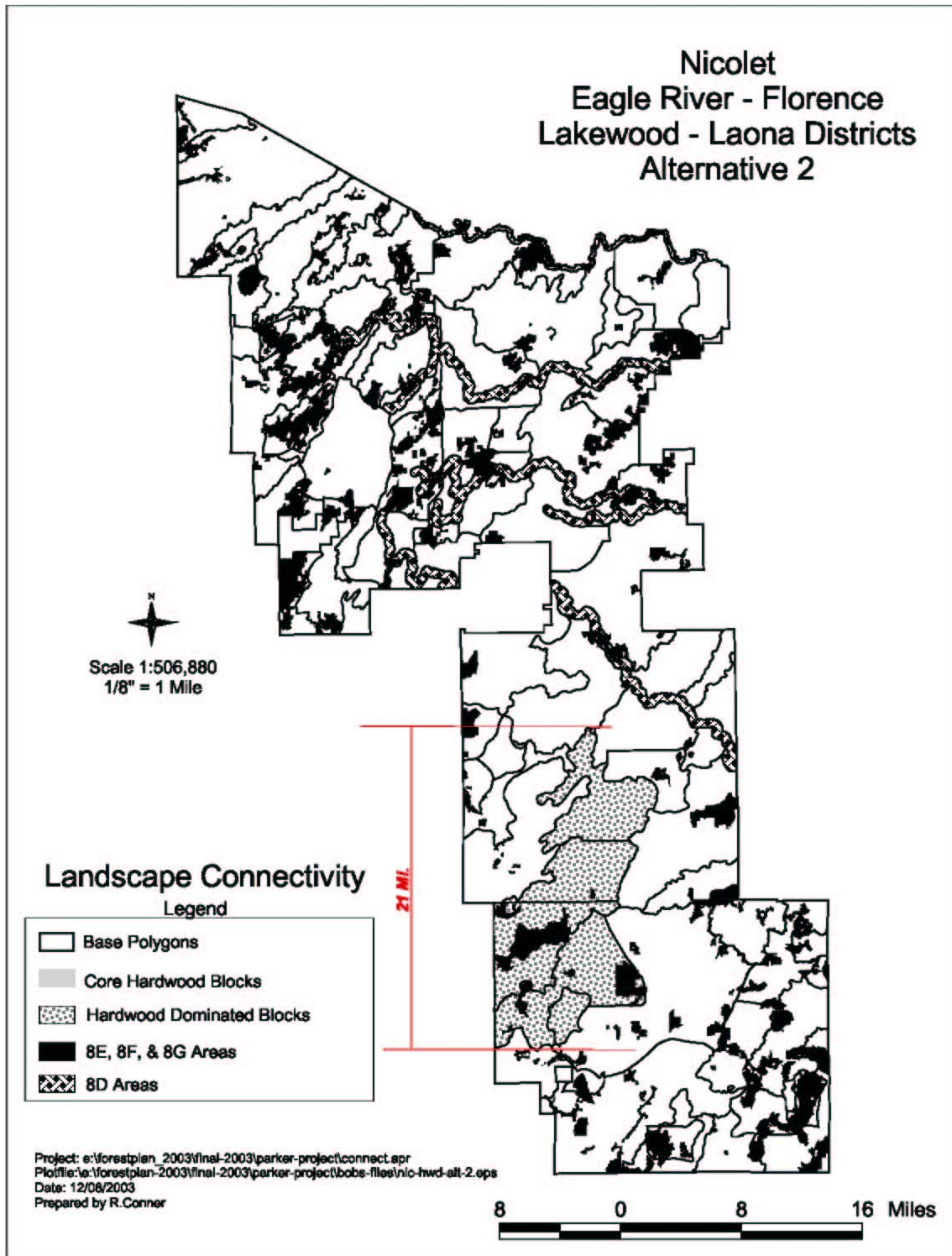


Figure P-3. Nicolet Landscape Connectivity Alternative 2

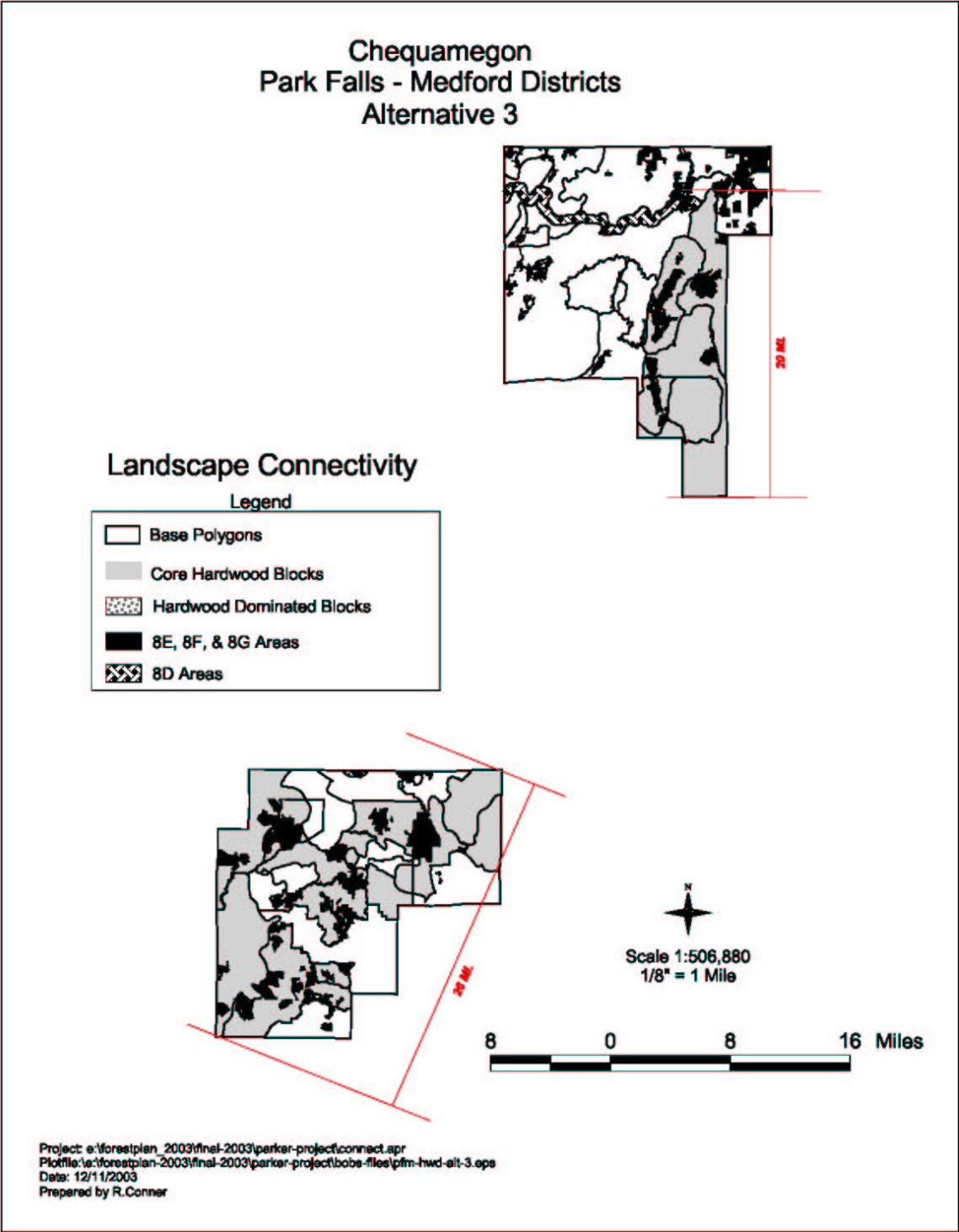


Figure P-4. Park Falls-Medford District Landscape Connectivity Alternative 3

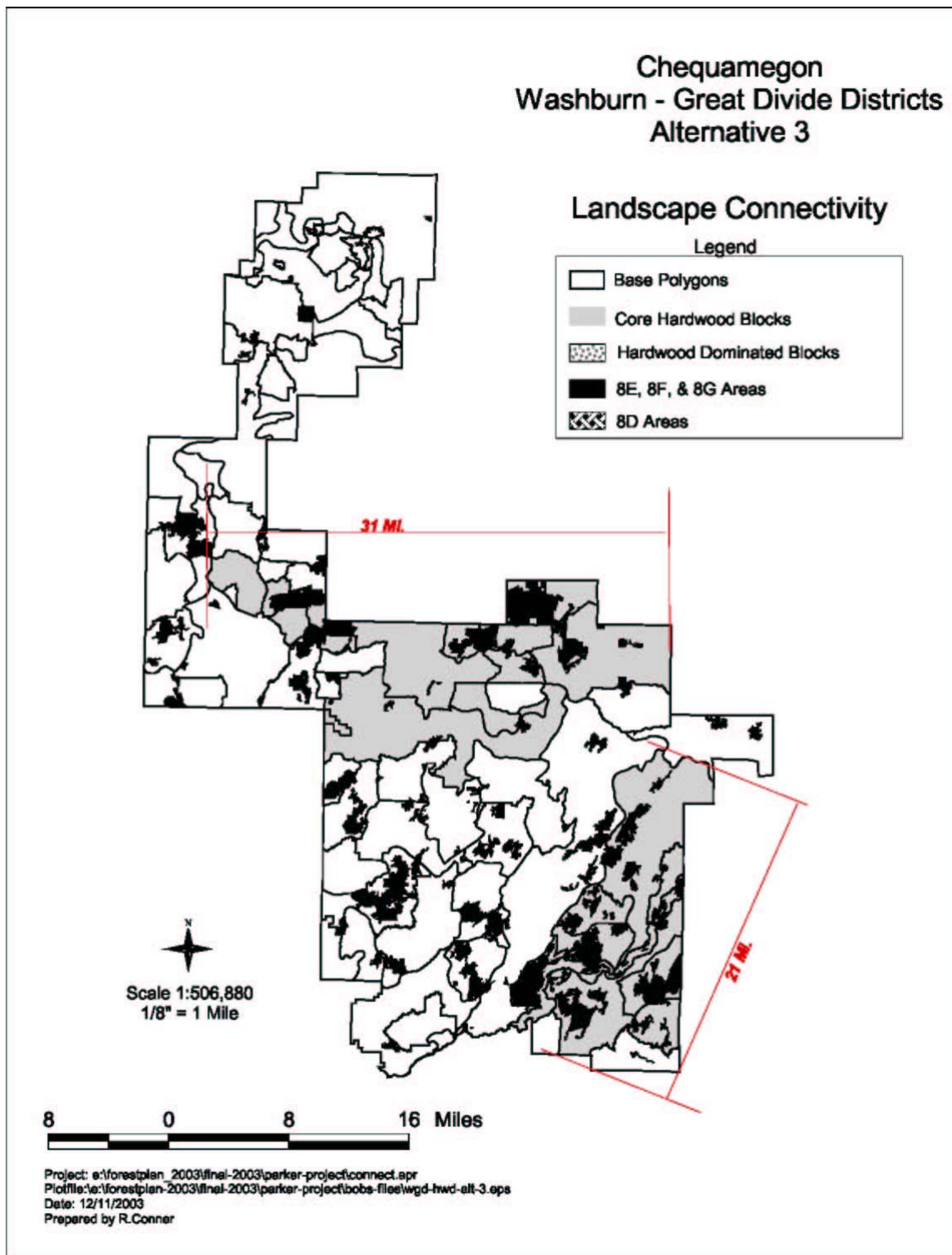


Figure P-5. Washburn-Great Divide Districts Landscape Connectivity Alternative 3

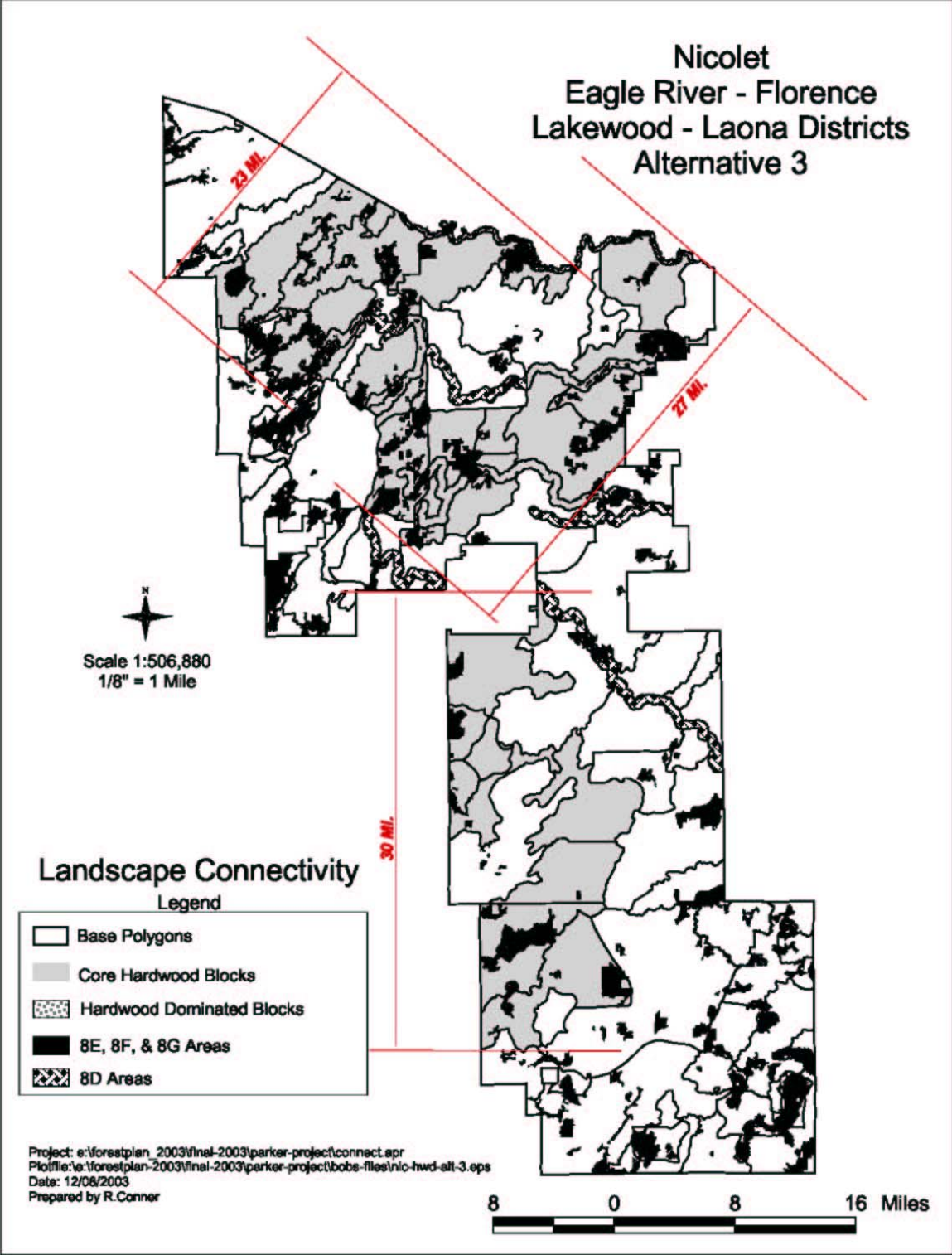


Figure P-6. Nicolet Landscape Connectivity Alternative 3

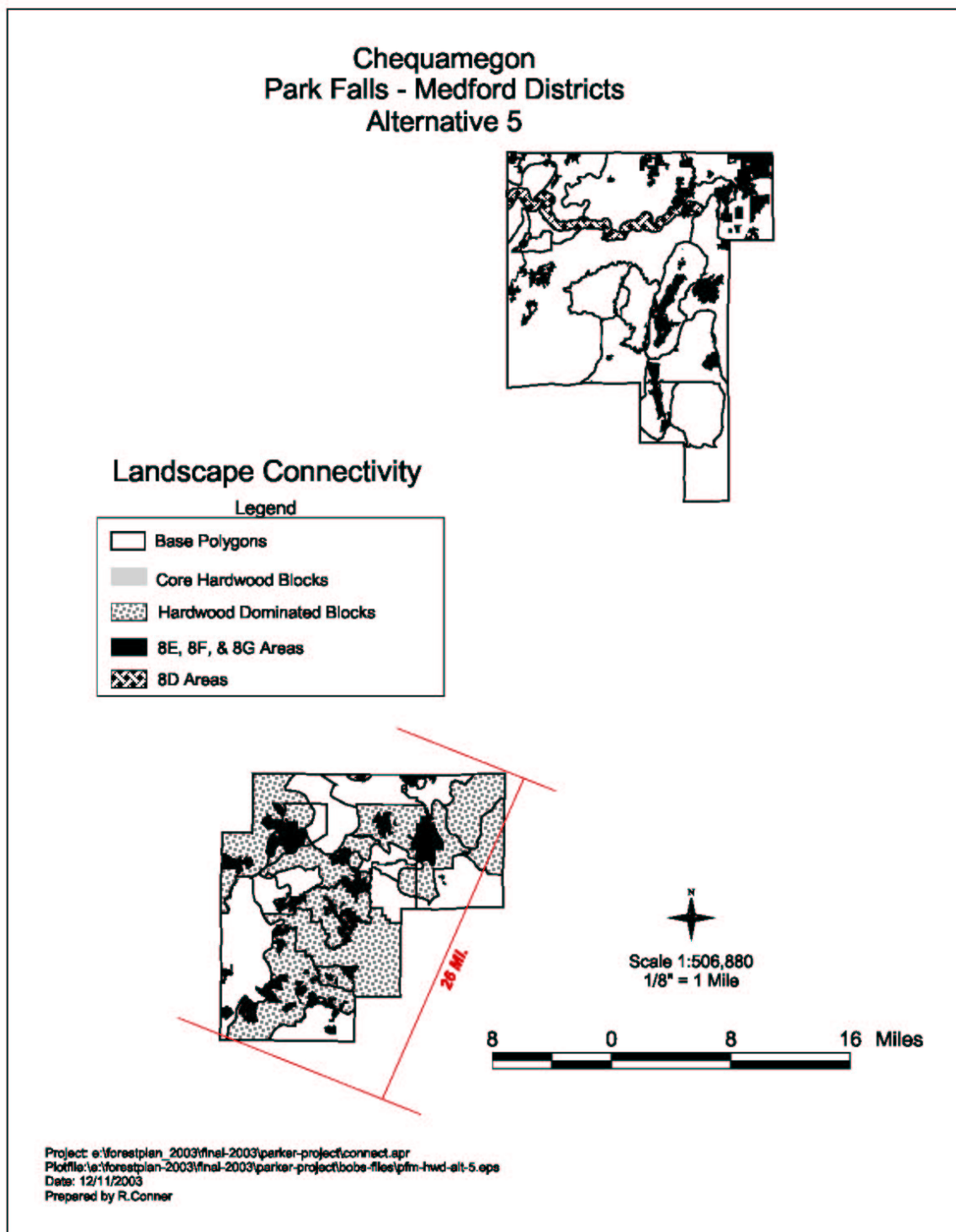


Figure P-7. Park Falls-Medford District Landscape Connectivity Alternative 5

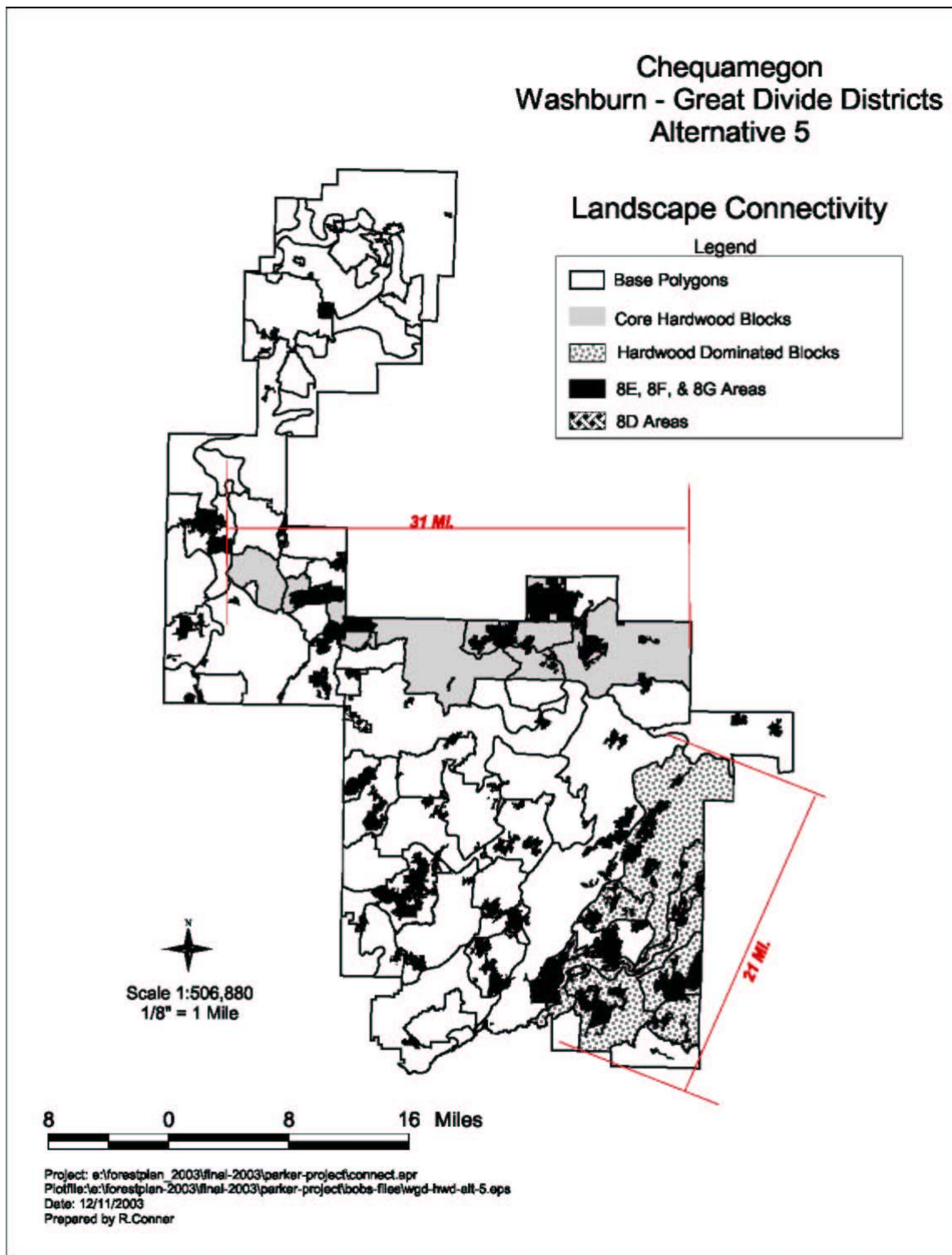


Figure P-8. Washburn-Great Divide Districts Landscape Connectivity Alternative 5

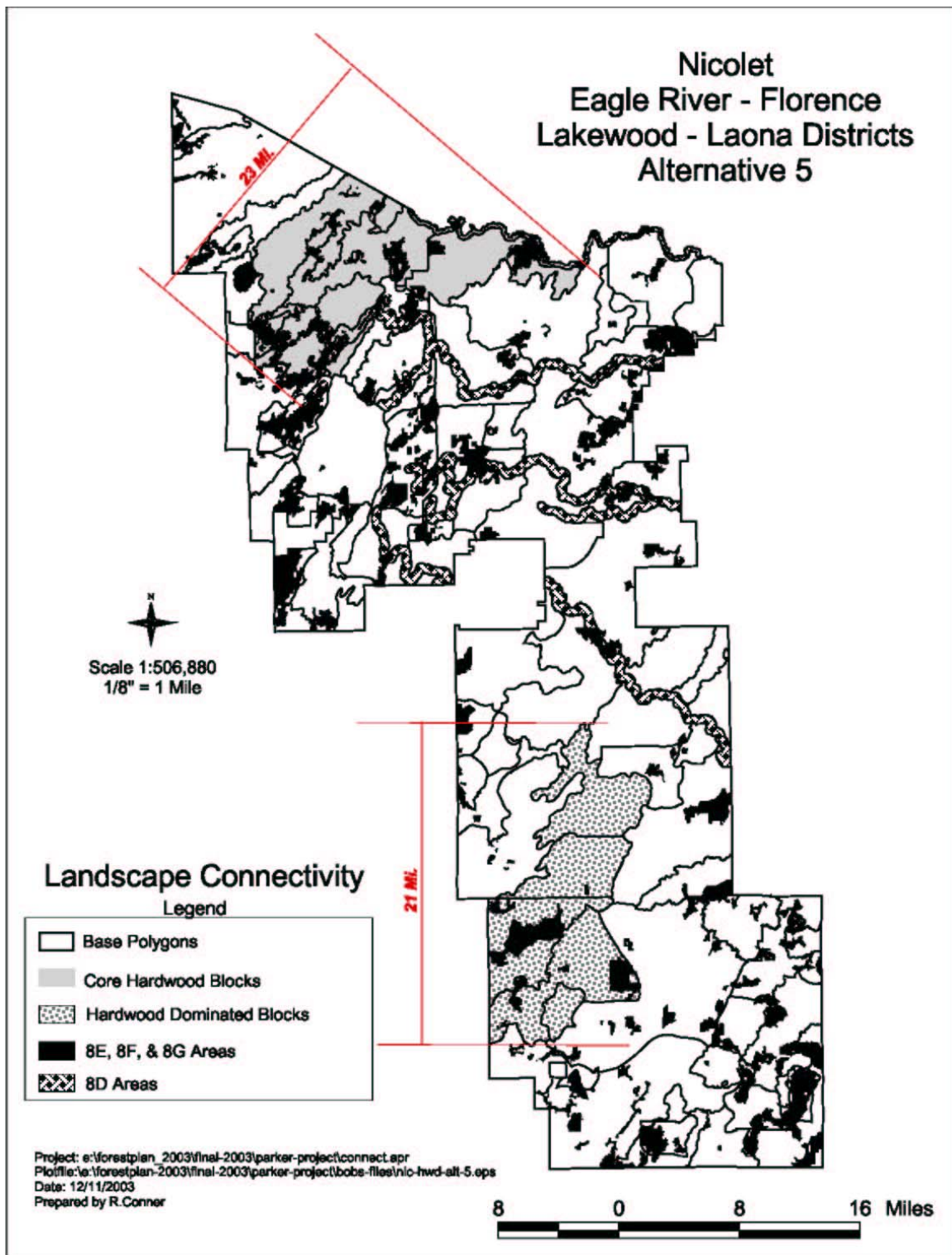


Figure P-9. Nicolet Landscape Connectivity Alternative 5

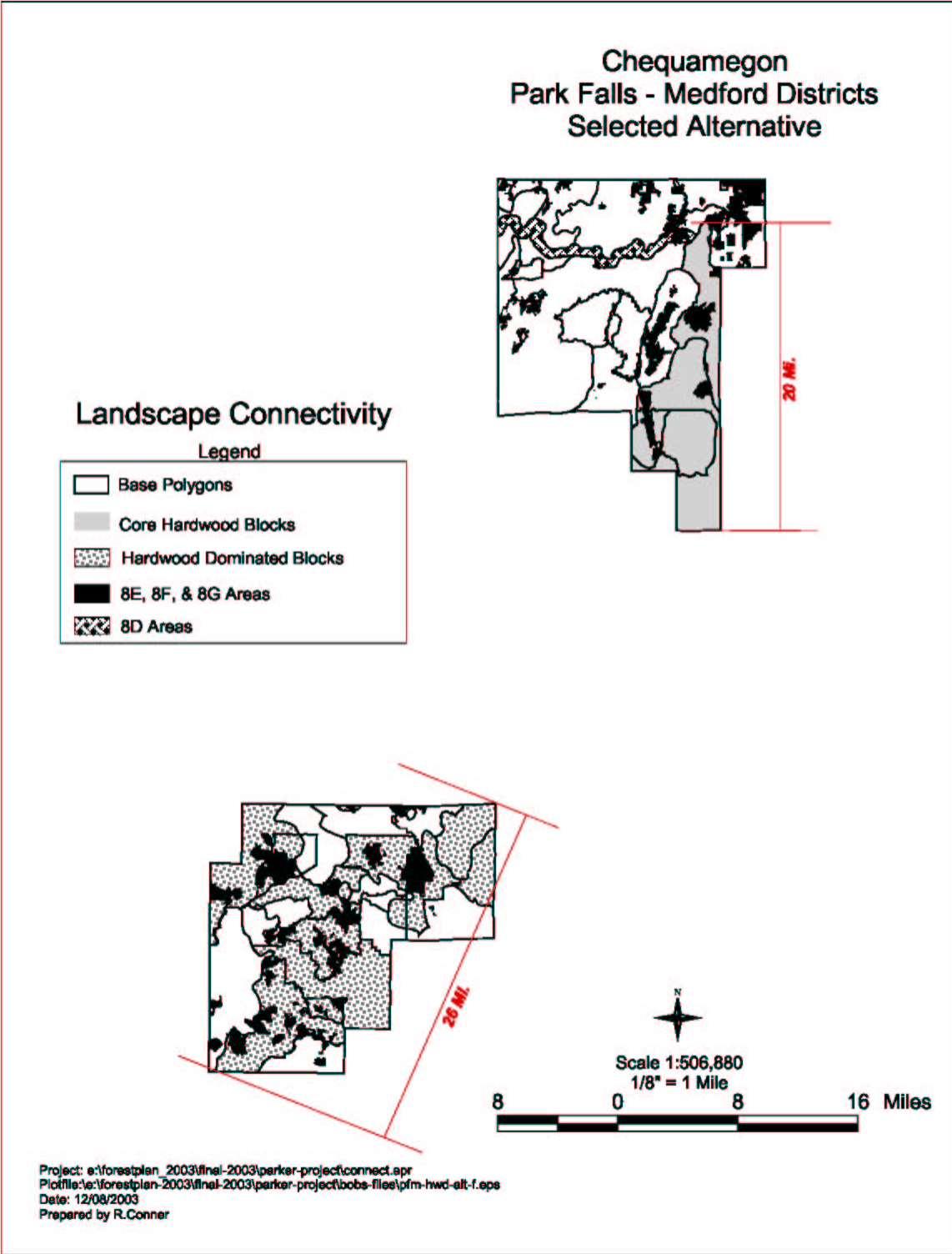


Figure P-10. Park Falls-Medford District Landscape Connectivity Selected Alternative

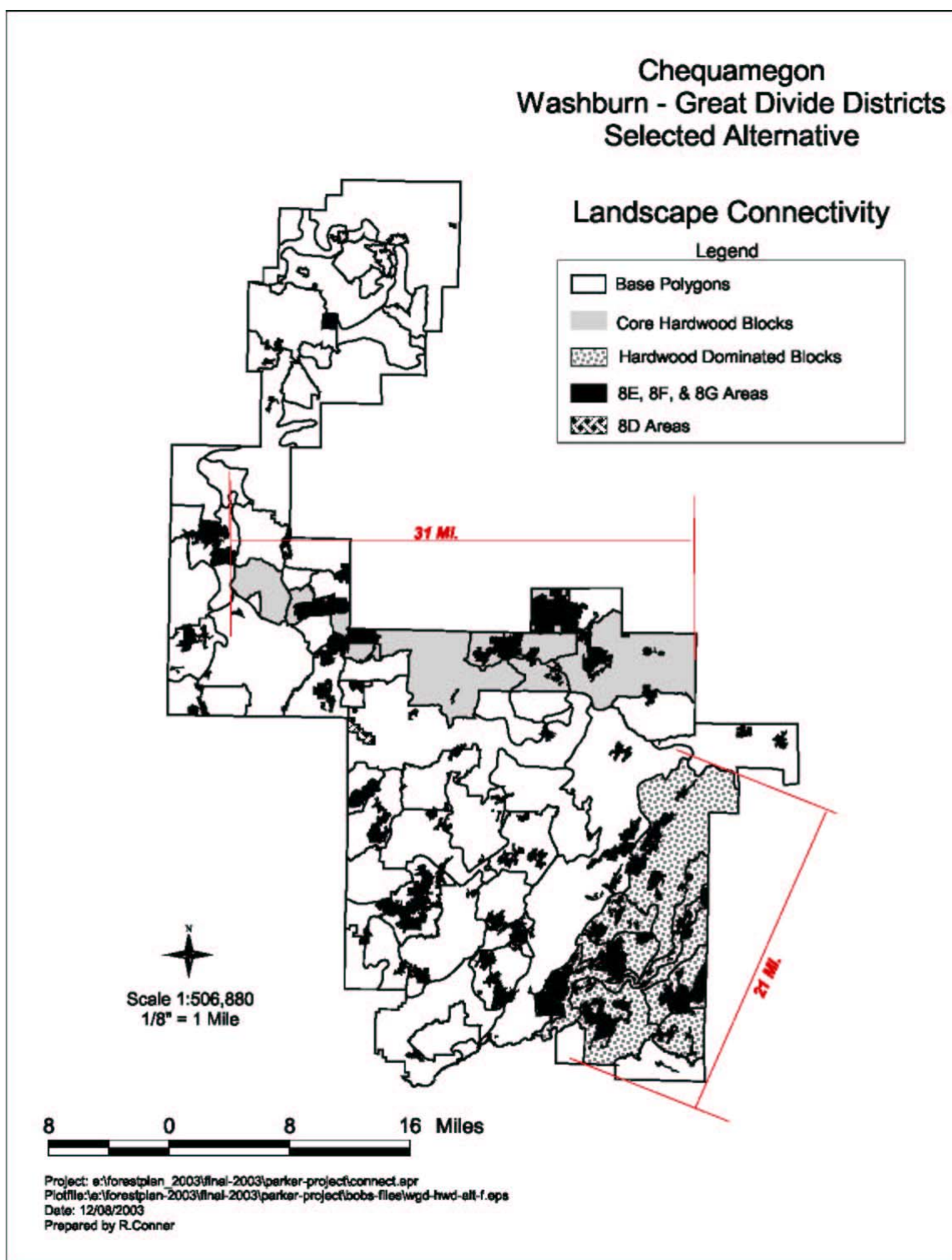


Figure P-11. Washburn-Great Divide Districts Landscape Connectivity Selected Alternative

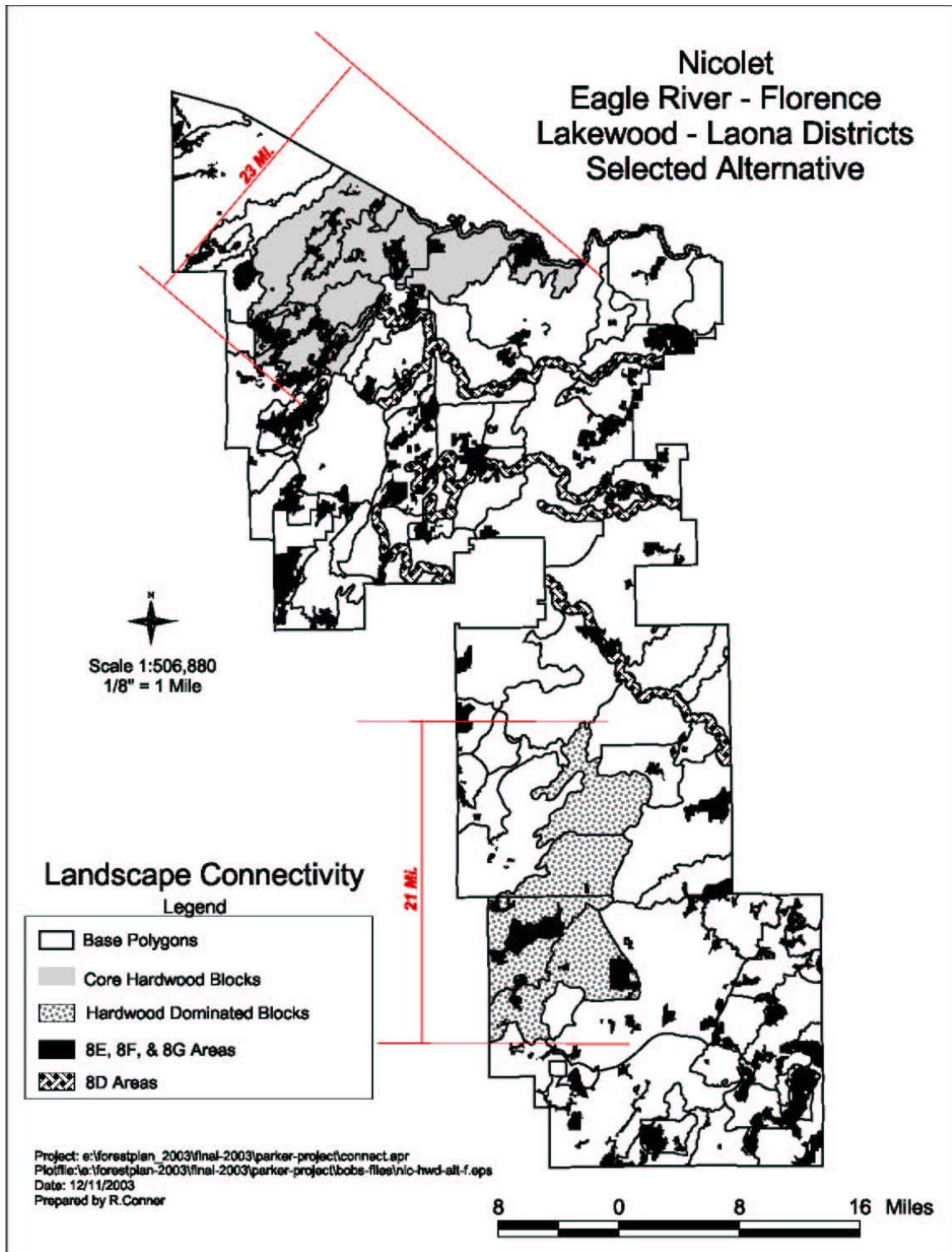


Figure P-12. Nicolet Landscape Connectivity Selected Alternative

