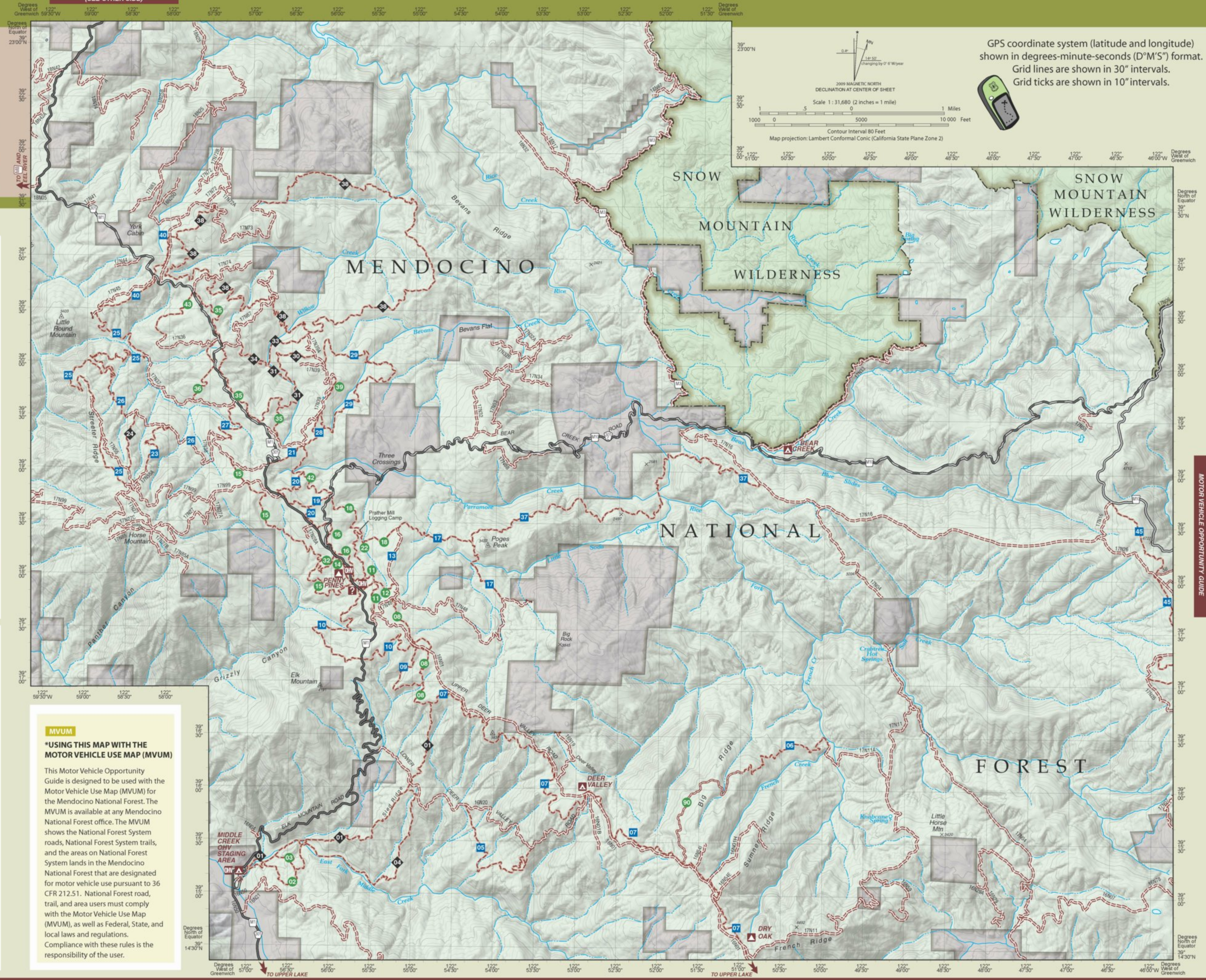


Motor Vehicle Opportunities in the Southern Upper Lake Area

Upper Lake Ranger District Mendocino National Forest

TO UPPER LAKE - NORTH AREA MAP
(SEE OTHER SIDE)



GPS coordinate system (latitude and longitude) shown in degrees-minute-seconds (D°M'S") format. Grid lines are shown in 30" intervals. Grid ticks are shown in 10" intervals.

2009 MAGNETIC NORTH DECLINATION AT CENTER OF SHEET
Changing by 0" 6" W/year

Scale 1:31,680 (2 inches = 1 mile)

Map projection: Lambert Conformal Conic (California State Plane Zone 2)



LEGEND

Travel Routes

Roads Open to HIGHWAY LEGAL VEHICLES ONLY
Within National Forests, these roads are open only to motor vehicles licensed under State law for general operation on all public roads within the State.

- This map does not define regulations for roads and trails outside the National Forest boundary.
- Paved Road
 - Gravel Road
 - Dirt Road
 - Road Not Maintained for Passenger Vehicles
- MVUM**
Map symbol on Mendocino National Forest Motor Vehicle Use Map (MVUM)*

Forest Service ROADS OPEN TO ALL VEHICLES
These roads are open to all motor vehicles, including smaller off highway vehicles that may not be licensed for highway use (but not to oversize or overweight vehicles under State traffic law).

- Road Not Maintained for Passenger Vehicles
- MVUM**
Map symbol on Mendocino National Forest Motor Vehicle Use Map (MVUM)*

Forest Service TRAILS OPEN TO TRAIL VEHICLES
These trails are open to trail vehicles specified below in the legend (trail vehicles are defined as motorcycles, ATVs, and high-clearance 4WD vehicles).

- Trail Open to ALL Trail Vehicles
 - Trail Open to Trail Vehicles 50' or less in width
 - Trail Open to Motorcycles Only
- MVUM**
Map symbol on Mendocino National Forest Motor Vehicle Use Map (MVUM)*

Forest Service AREAS OPEN TO CROSS-COUNTRY TRAVEL
These are areas on National Forest System land that allow cross-country travel by motorized vehicles.

- Area Open to Cross-Country Travel (Area is smaller than area represented by map symbol. On this map there is one Area Open to Cross-Country Travel, at Middle Creek OHV Staging Area)

Road and Trail Numbers

- County Road
 - National Forest Primary Road
 - National Forest Road
- Trail Difficulty**
- Easiest
 - More Difficult
 - Most Difficult
- National Forest trail number with degree of difficulty symbol

MVUM
2-digit trail numbers on this map and on signs on the ground are the last two digits in the 5-digit trail number on the Mendocino National Forest Motor Vehicle Use Map (MVUM)*

Forest Service Recreation Facilities

- Work Center (Visitor Information)
- OHV Staging Area
- Forest Service Developed Campground
- Forest Service Undeveloped Campground
- Information
- Gate

Land Management

- National Forest
- National Forest Wilderness
- Private
- National Forest Boundary
- Wilderness Boundary

MVUM *USING THIS MAP WITH THE MOTOR VEHICLE USE MAP (MVUM)

This Motor Vehicle Opportunity Guide is designed to be used with the Motor Vehicle Use Map (MVUM) for the Mendocino National Forest. The MVUM is available at any Mendocino National Forest office. The MVUM shows the National Forest System roads, National Forest System trails, and the areas on National Forest System lands in the Mendocino National Forest that are designated for motor vehicle use pursuant to 36 CFR 212.51. National Forest road, trail, and area users must comply with the Motor Vehicle Use Map (MVUM), as well as Federal, State, and local laws and regulations. Compliance with these rules is the responsibility of the user.

SEE STONYFORD AREA
MOTOR VEHICLE OPPORTUNITY GUIDE