



---

---

## MISSOURI LAKES TRAIL - FDT 2003

**Length:**

3.0 miles to first lake  
4.1 miles to Missouri Pass  
4.5 miles to Cross Creek Trail

**Difficulty:** Moderate to More Difficult

**Beginning Elevation:** 10,010 ft

**Ending Elevation:** 11,986 ft.

**Elevation Gain:**

+1427 ft.-0 ft = +1427 ft to first lake  
+1991 ft -0 ft = +1991 ft to Missouri Pass  
+1998 ft -187 ft = +1811 ft to Fancy Pass trail

**Trail Use:** High

**Open To:** Hiking, Horseback

**USGS Map(s):** Mt of the Holy Cross, Mt Jackson

**Overnight Registration Information:** In order to continue to provide quality recreation experiences and to protect the wilderness lands, the Forest Service must gather data regarding visitor use and travel patterns. Each party **camping overnight** in the Holy Cross Wilderness is **required to self-register at the trailhead and to carry a copy of the registration with them** during their visit. There is no fee charged and no limit to the number of registration forms issued.

**Access from Vail:** Travel west on I-70 to Exit #171 for Minturn, Leadville, and Hwy 24. Exit here and turn right onto Hwy 24. Proceed south for 12.6 miles to Homestake Road #703. Turn right and proceed past the Gold Park Campground to mile 8.5. Turn right onto Missouri Lakes Road #704 and continue 3 miles on this dirt road to a T at 10,200 ft. Turn left and the trailhead is immediately on the right.

**Trail Highlights:** The first mile of the trail passes diversion dams and water pipelines. Around mile 1.2, the trail crosses the creek at the mouth of a miniature canyon, offering a breath taking view. The trail winds through stands of conifers and crosses the creek several more times before emerging into a large lush meadow. The trail climbs a short, steep distance to the basin that holds the Missouri Lakes. Savage Peak dominates the view to the south above the first lake. The main trail traverses the basin past several other lakes before reaching the last lake at about 3.6 miles. To get a bird's eye view of the lakes, continue up switchbacks to the 11,986-foot Missouri Pass and back down the other side to join the Fancy Pass and Cross Creek trails at mile 4.5.

**Important Information:** Missouri Lakes is within the **Holy Cross Wilderness**. Wilderness is for your use and enjoyment, but you have an obligation to leave it unimpaired for future generations. Please understand your responsibilities when visiting these special places and leave no trace of your visit. A few of the Holy Cross Wilderness regulations include:

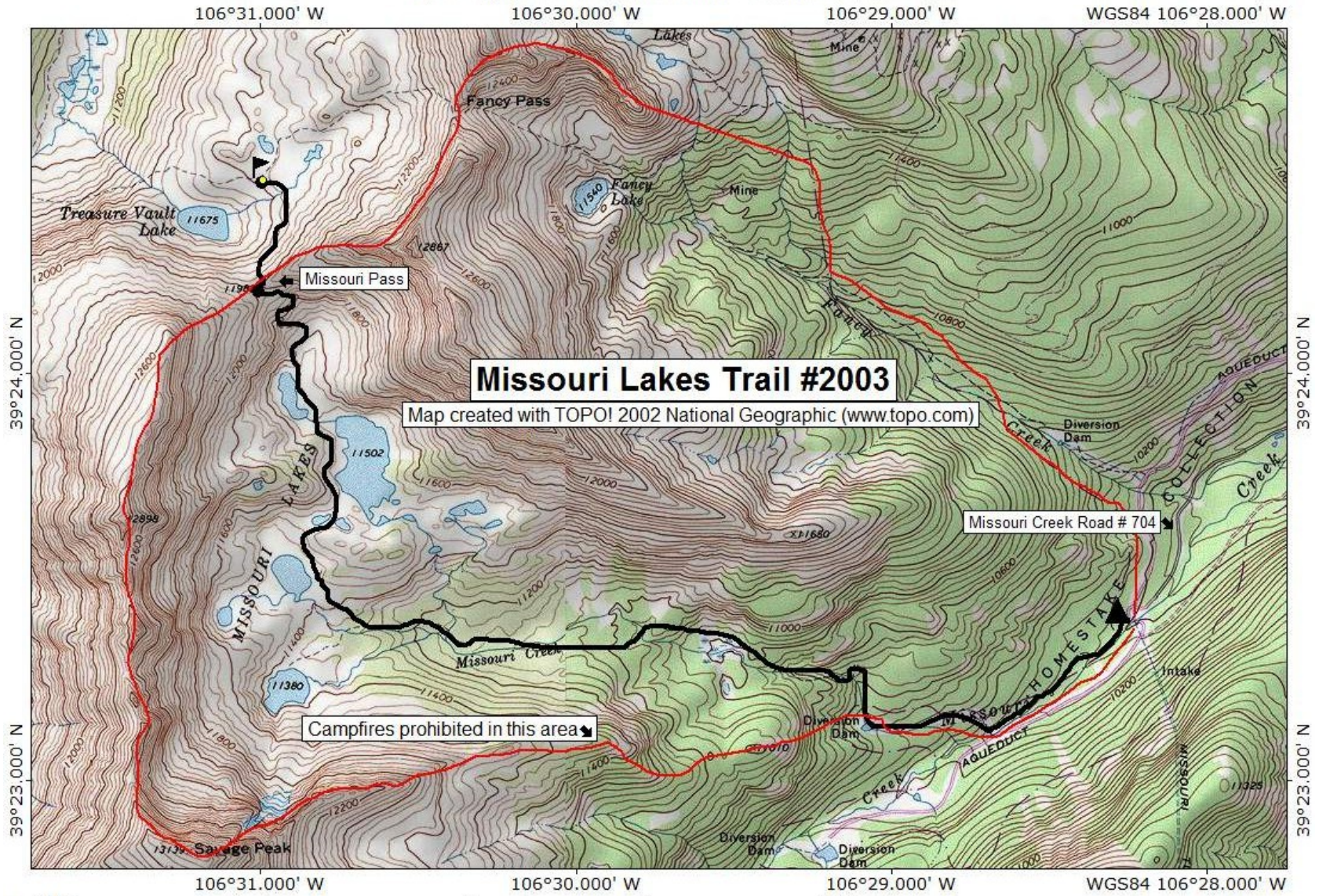
- \* Camping - camp at least 100 feet from streams, lakes, and trails.
- \* Dogs - must be under control and must not harass wildlife, people, or damage property.
- \* Fire - campstoves are recommended and fires are prohibited within the Fancy Creek and Missouri Creek drainages. Elsewhere in the wilderness, fires are prohibited within 100 feet of lakes, streams, trails, and above 11,000 feet in elevation.
- \* Group size - limit group sizes to 15 people.
- \* Sanitation - bury human waste at least 100 feet from water and 6 inches in the soil.

**PACK IT IN - PACK IT OUT!! LEAVE NO TRACE!!**

This map is intended for use as a general guide only, not for actual land navigation. The White River National Forest strongly suggests purchasing a topographic map and compass prior to your hiking trip.



TOPO! map printed on 04/01/13 from "missouri\_lakes.tpo"



TN\*|MN  
10°

