

Holy Cross Ranger District
24747 US Hwy 24
P.O. Box 190
Minturn, CO 81645
(970) 827- 5715 - Voice
(970) 827-9343 - Fax
www.fs.usda.gov/whiteriver



United States Department of Agriculture



HIKING

UPPER PINEY RIVER TRAIL #1885

Length: 2.8 miles (one way)

Difficulty: Easy

Beginning Elevation: 9,397 ft.

Elevation Gain: +565 ft.– 215 ft. = +350ft.

Trail Use: Moderate to High **Open**

To: Hiking, Horseback **Ending**

Elevation: 9,727 ft. **USGS Map(s):**

Vail West, Vail East

Access from Vail, CO: From I-70, take Exit 176 for Vail. Take the North Frontage Road west to Red Sandstone Road. Turn north here and follow the paved road about 0.7 miles to a fork with a dirt road on the left. There should be a Forest Service sign indicating this is Red Sandstone Road #700 (Reset your odometer here). Continue up this road about 2.7 miles to an intersection with the Lost Lake Road (#786) and continue left. At mile 6.5 you will pass Red and White Mtn Road-FSR 734. At mile 6.7 you will pass the Lost Lake Trail parking lot on the right and then reach an intersection where the Muddy Pass/Moniger Road goes left. **Stay right here.** (Some maps show the Red Sandstone Road changing number from FSR 700 to FSR 701 at this point, and some don't, but regardless, you stay right to get to Piney Lake and the Upper Piney River Trail). At mile 9.1, you will cross the Piney River and see a trailhead for Lower Piney River Trail - FDT 1885 on the left. Stay right and reach a Forest Service parking lot on the right at mile 10.65 before the entrance to Piney River Ranch (**private property**). The trailhead is on the north side (left side of the parking lot as one faces the Piney River Ranch entrance) of the parking lot. If visiting the ranch, you can drive further to their parking lot.

Trail Highlights: From the parking lot, outside of the ranch entrance, cross the road to the trailhead and follow the trail to the east, or right. Shortly after crossing into the Eagles Nest Wilderness, **stay right** at a fork with trail #1889 (which goes to the left and climbs along Marugg Creek to Soda Lakes). The trail is mostly in open meadows above the Piney Lake and Piney River before entering aspen groves and becoming a bit rougher before reaching the cascading falls at just under 3 miles. Beyond here there is no maintained trail, so those wishing to go further should make sure to have map and compass skills.

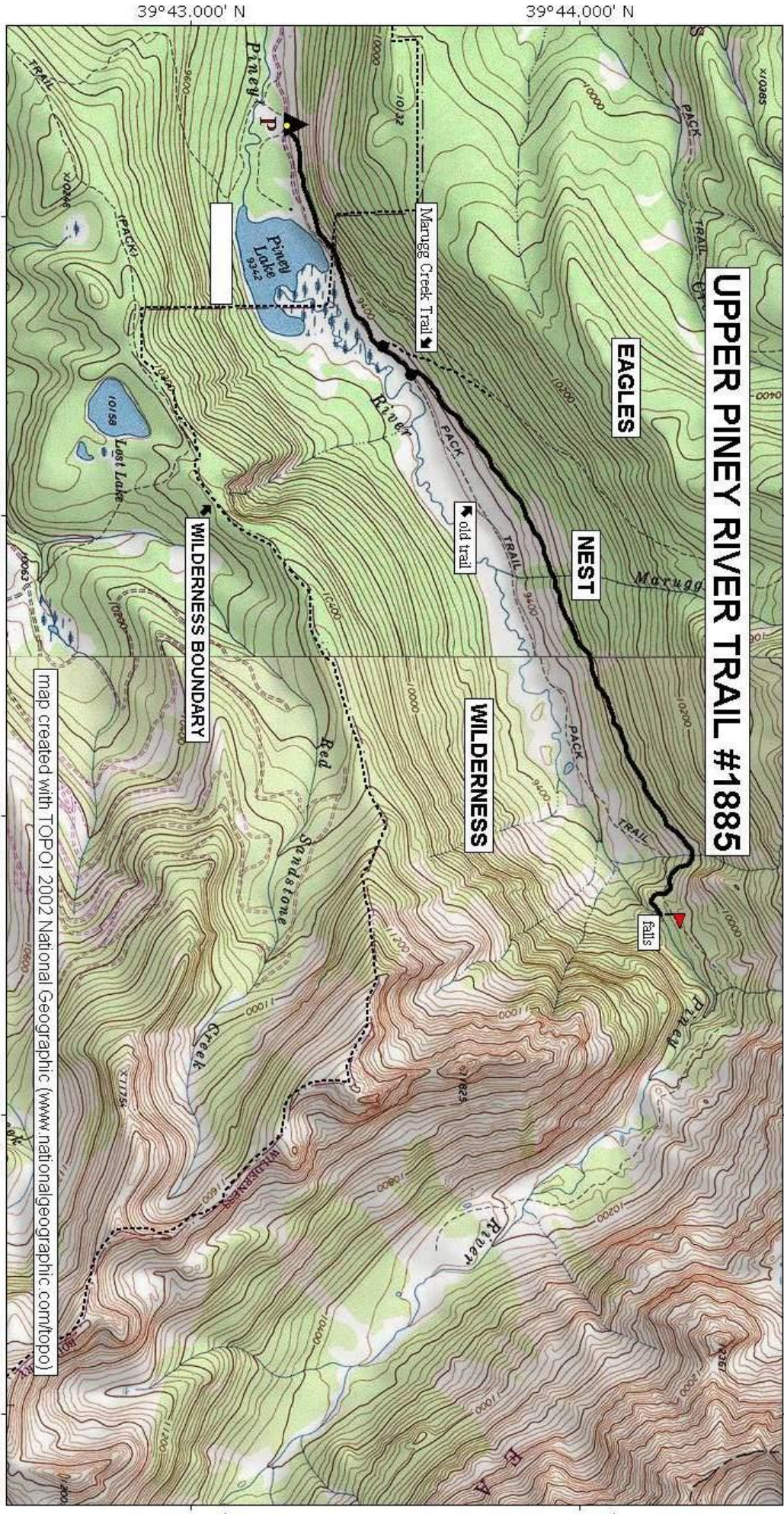
Attractions: The lower part of the trail is one of the most popular hiking and horseback trails with the waterfalls at mile 2.8 as a great destination. This trail can also provide access to Mt. Powell (13,534 ft.) and the Piney River for fishing. Beyond the falls, fewer people and horses use the trail and the area becomes increasingly remote.

Important Information: Piney River is in the **Eagles Nest Wilderness**. Wilderness is for your use and enjoyment, but you have an obligation to leave it unimpaired for future generations. Please understand your responsibilities when visiting these special places. Leave them as you wish to find them.

- * Camping - camp at least 100 feet from streams, lakes, and trails
- * Dogs - must be leashed out of consideration for both other people and wildlife
- * Fire - campstoves are recommended. Fires are prohibited within 100 feet of any stream or Forest Service Trail, within ¼ mile of any lake, or at any point above treeline.
- * Group size - limit group sizes to 15 people
- * Sanitation - bury human waste 100 feet from water and 6 inches in the soil
- * Overnight Registration - free, self-issue registration forms are available at wilderness trailheads and are required for overnight camping. No registration is required for day-use.

PACK IT IN - PACK IT OUT!! LEAVE NO TRACE!!

This map is intended for use as a general guide only, not for actual land navigation. The White River National Forest strongly suggests purchasing a topographic map and compass prior to your hiking trip.



map created with TOPOI ©2002 National Geographic (www.nationalgeographic.com/topoi)

Map created with TOPOI ©2002 National Geographic (www.nationalgeographic.com/topoi)

