

Blanco Ranger District  
220 E Market Street  
Meeker, CO 81641  
(970) 878-4039 - Voice  
(970) 878-5173 - Fax



United States Department of Agriculture



---

---

## **CLIFF LAKE TRAIL #1831**

**Difficulty:** Moderate

**Trail Use:** Heavy

**Length:** 3.5 miles

**Elevation:** Starts 7,944 feet and ends 9,819 feet (highest point 9,819 feet)

**Elevation Gain:** +1,960 feet – 85 feet = +1,875 feet

**Open To:** HIKING, HORSEBACK RIDING

### **Access:**

- The Cliff Lake Trail is located 29 miles east of Meeker.
- From Meeker, take State Highway 13 east for 1 mile.
- Where Highway 13 turns north, turn east on Rio Blanco County Road 8 for 18 miles.
- Turn south on Rio Blanco County Road 10 for 2 miles, jog north for 1/4 mile, then east for 10 miles to the South Fork Campground and trailhead.
- Take the Spring Cave Trail for about 1/2 mile to where the Cliff Lake Trail branches to the south.

### **Trail Highlights:**

The Cliff Lake Trail starts out 100 yards or so before you reach Spring Cave, angling back to the north-west. You climb quickly to a sagebrush covered bench and follow it for 1/4 mile before starting up through stands of timber alternating between spruce fir and aspen. The trail continues about 3 miles through this same type of terrain until reaching Cliff Lake. Occasional views of South Fork Canyon to the east are visible. The Cliff Lake Trail is also accessible via Forest Road 601 off of the Buford-New Castle Road (FDR 245).

### **Important Information:**

- **THIS TRAIL IS USED FOR MULTIPLE ACTIVITIES INCLUDING HIKING AND HORSEBACK RIDING. PLEASE RESPECT OTHER USERS.**
- **DOMESTIC CATTLE MAY BE GRAZING IN THE AREA.**

**PACK IT IN - PACK IT OUT!! LEAVE NO TRACE!!**

*THIS MAP IS INTENDED FOR USE AS A GENERAL GUIDE ONLY, NOT FOR ACTUAL LAND NAVIGATION. THE WHITE RIVER NATIONAL FOREST STRONGLY SUGGESTS PURCHASING A TOPOGRAPHIC TRAIL MAP AND COMPASS PRIOR TO BEGINNING AN OFF-HIGHWAY VEHICLE TRIP.*

107°34.000' W

Himes Peak Campground  
107°33.000' W

107°32.000' W

WGS84 107°31.000' W

39°52.000' N

39°52.000' N

39°51.000' N

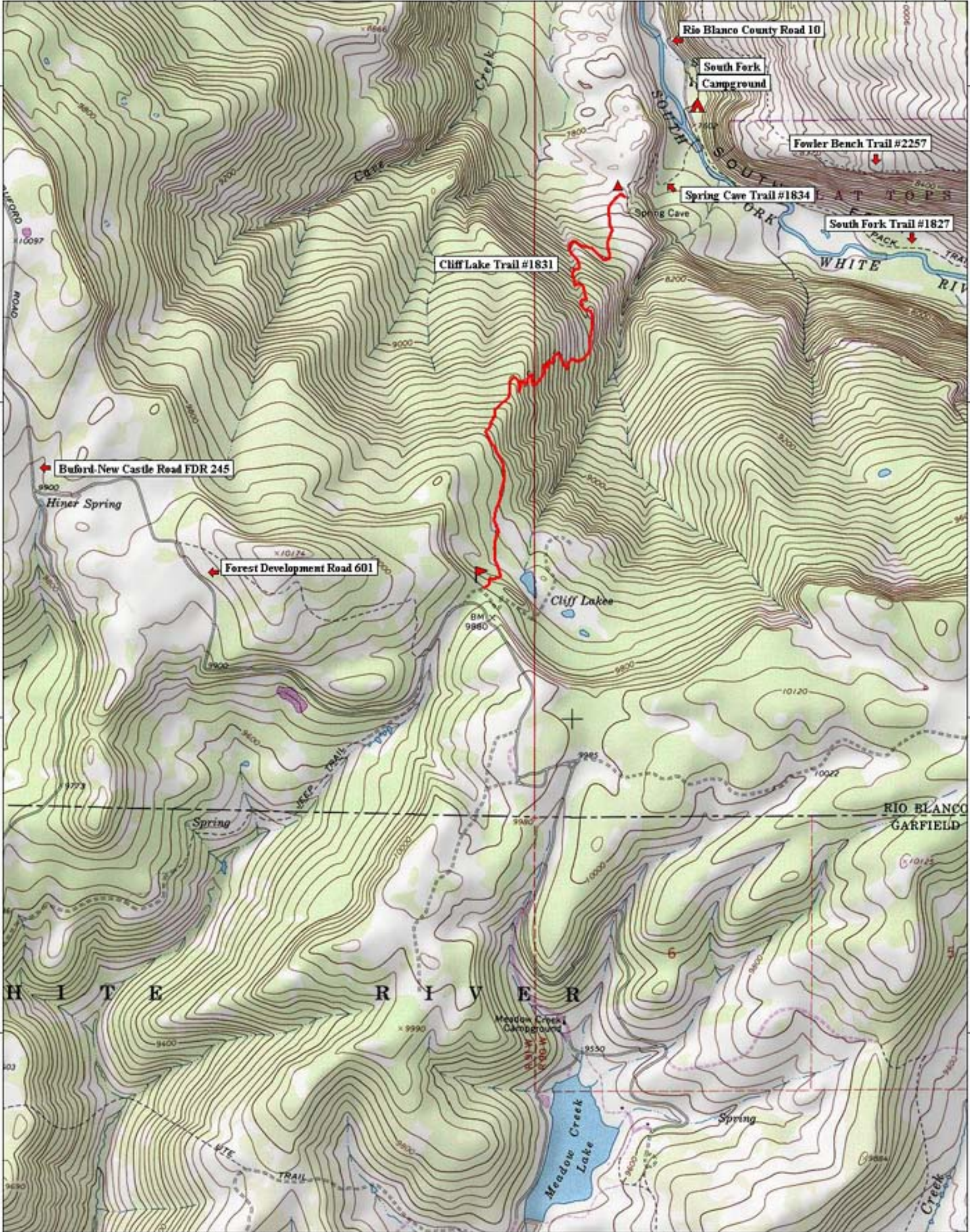
39°51.000' N

39°50.000' N

39°50.000' N

39°49.000' N

39°49.000' N



107°34.000' W

107°33.000' W

107°32.000' W

WGS84 107°31.000' W

TN MN  
11°

