

Blanco Ranger District  
220 E Market Street  
Meeker, CO 81641  
(970) 878-4039 - Voice  
(970) 878-5173 - Fax



United States Department of Agriculture



---

---

## DOE CREEK TRAIL #2259

**Difficulty:** More Difficult

**Trail Use:** Light

**Length:** 3.3 miles

**Elevation:** Starts 9,636 feet and ends 10,948 feet (highest point 10,948 feet)

**Elevation Gain:** +1,313 feet – 1 feet = +1,312 feet

**Open To:** HIKING, HORSEBACK RIDING

### Access:

- Doe Creek Trail is located 48.5 miles east of Meeker.
- From Meeker, take State Highway 13 east for 1 mile.
- Where Highway 13 turns north, turn east on Rio Blanco County Road 8 for 18 miles.
- Turn south on Rio Blanco County Road 10 for 2 miles, jog north for 1/4 mile, then east for 10 miles to the South Fork Campground and trailhead.
- Follow the South Fork Trail 17.25 miles up the South Fork Canyon past Budes Resort to the Doe Creek Trail junction.
- The trail is accessible from the Colorado River via the Coffee Pot Road, FDR #600 to Budes Resort. The Nichols Creek Trail lies 3.25 miles from the road up the South Fork Trail.

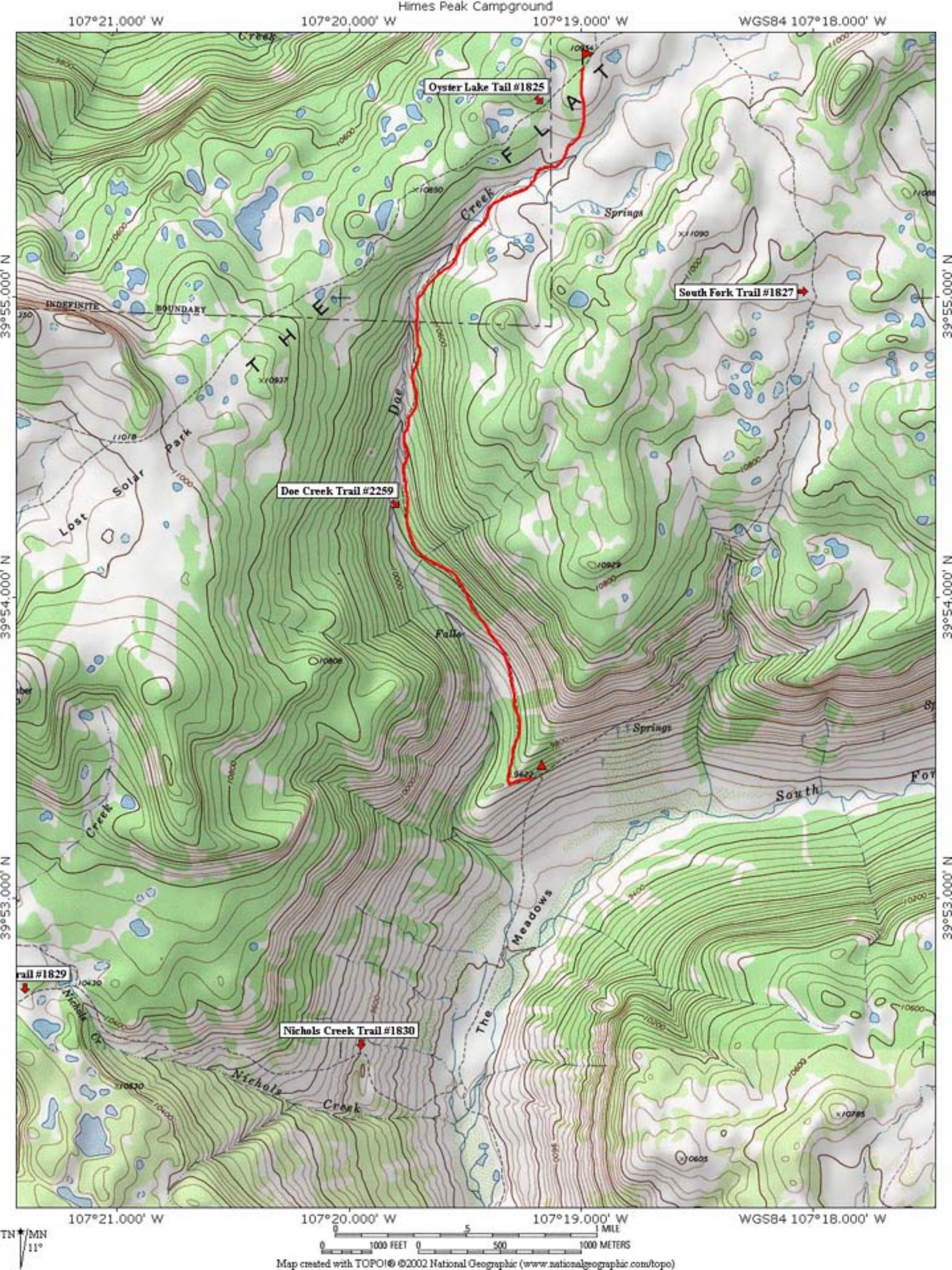
### Trail Highlights:

### Important Information:

- **THIS TRAIL IS USED FOR MULTIPLE ACTIVITIES INCLUDING HIKING AND HORSEBACK RIDING. PLEASE RESPECT OTHER USERS.**
- **DOMESTIC CATTLE MAY BE GRAZING IN THE AREA.**
- **PLEASE RESPECT PRIVATE PROPERTY.**

**PACK IT IN - PACK IT OUT!! LEAVE NO TRACE!!**

*THIS MAP IS INTENDED FOR USE AS A GENERAL GUIDE ONLY, NOT FOR ACTUAL LAND NAVIGATION. THE WHITE RIVER NATIONAL FOREST STRONGLY SUGGESTS PURCHASING A TOPOGRAPHIC TRAIL MAP AND COMPASS PRIOR TO BEGINNING AN OFF-HIGHWAY VEHICLE TRIP.*



107°21.000' W

107°20.000' W

107°19.000' W

WGS84 107°18.000' W

39°55.000' N

39°54.000' N

39°53.000' N

39°55.000' N

39°54.000' N

39°53.000' N

107°21.000' W

107°20.000' W

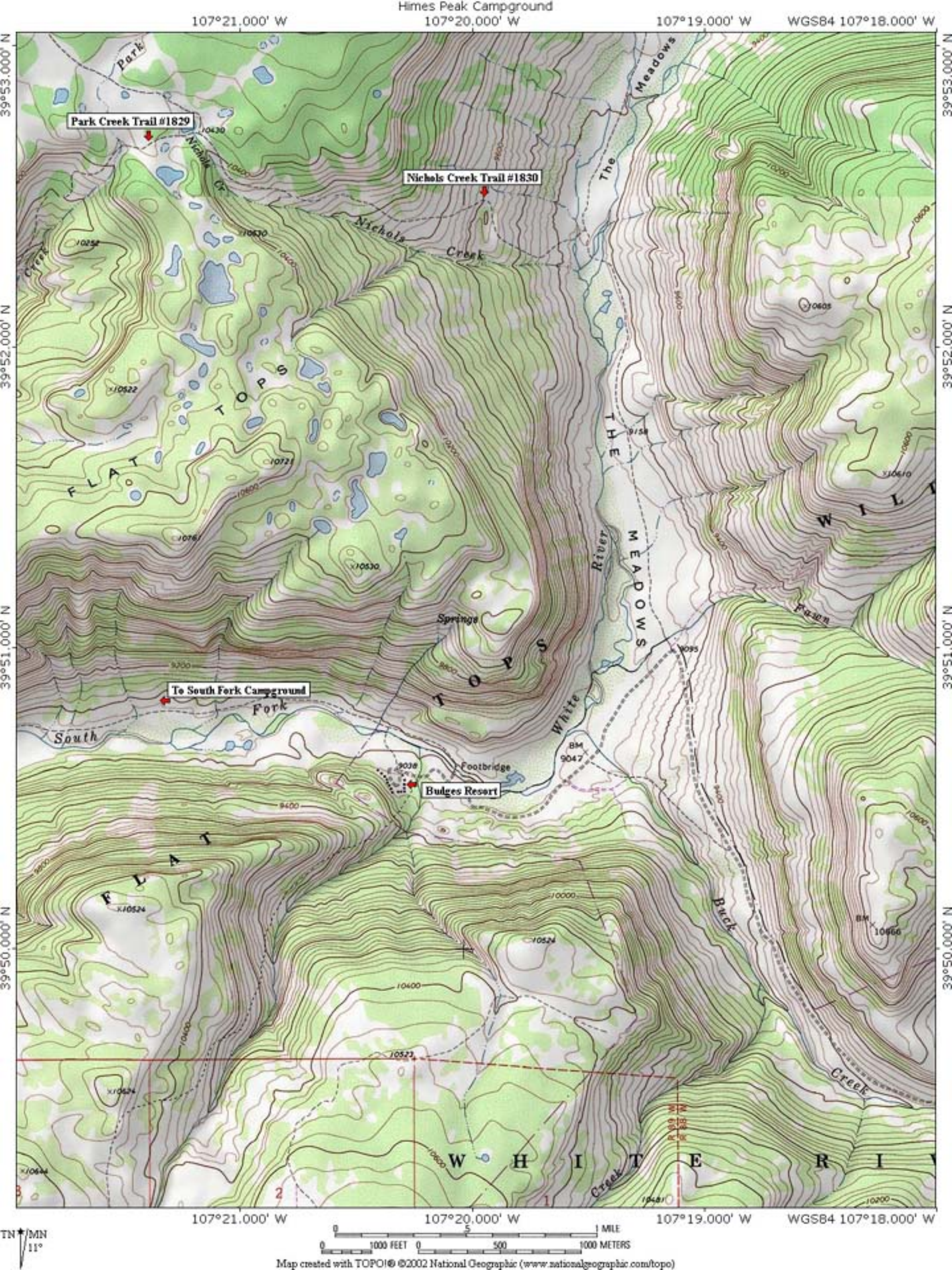
107°19.000' W

WGS84 107°18.000' W

TN  
11°  
MN

0 1000 FEET 0 500 1000 METERS

Map created with TOPO!© 2002 National Geographic (www.nationalgeographic.com/topo)



107°21.000' W

Himes Peak Campground  
107°20.000' W

107°19.000' W

WGS84 107°18.000' W

39°53.000' N  
39°52.000' N  
39°51.000' N  
39°50.000' N

39°53.000' N  
39°52.000' N  
39°51.000' N  
39°50.000' N

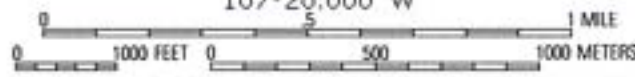
107°21.000' W

107°20.000' W

107°19.000' W

WGS84 107°18.000' W

TN MN  
11°



Map created with TOPO!© ©2002 National Geographic (www.nationalgeographic.com/topo)